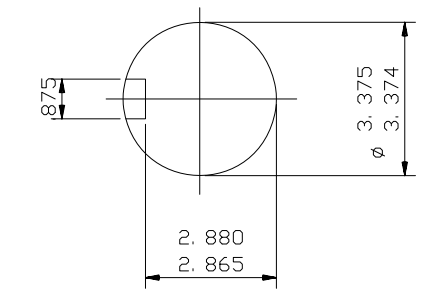


8 HOLES TAPPED .625 UNC  
EQUALLY SPACED  
ON 14 P. C. D.

4 HOLES FOR .750 BOLTS



ENLARGED VIEW OF  
SHAFT EXTENSION

NOTE: -  
TERMINAL BOX CAN BE TOP OR RIGHT  
HAND SIDE MOUNTED BY REFITTING FEET  
90° IN APPROPRIATE DIRECTION.  
CABLE ENTRY CAN BE SUPPLIED IN  
ANY ONE OF FOUR POSITIONS AT  
90° INTERVALS.

CUSTOMER		
ORDER No.		
SERIAL No.		
FRAME SIZE		
HP	RPM.	
Hz	PHASE 3	
VOLTS	POLES	
BRGS.	DE.	NDE.
MOTOR NETT. WT.		Kg.
INSULATION CLASS		
TEMPERATURE RISE °C		
DESIGN AMBIENT TEMPERATURE °C		
HEATER WATTS & VOLTS		
WATTS,		VOLTS

REMARKS

ALL DIMENSIONS IN INCHES



**BROOK  
CROMPTON**

NOTE !  
\* ENDPLAY WILL BE PROVIDED FOR ENDTHRUST  
PROTECTION WHEN CUSTOMERS NOTIFY US OF THEIR  
INTENTION TO USE RIGID COUPLINGS AND DRIVEN  
MACHINES WITHOUT ENDPLAY.

OUTLINE DIMENSIONS OF STANDARD FOOT/C FACE MOUNTED INCH A. C. MOTOR  
TO NEMA STD. MG1. TOTALLY ENCLOSED FAN COOLED.  
FITTED WITH SIDE MOUNTED TERMINAL BOX  
FRAME SIZE: - WDF447T.

SCALE	1:8	DATE
DRAWN		
CHECKED		
APPROVED		

DRG. No.		
REVISION:		DATE