

DATE
APRIL 6, 2007
CAT. #: XP0606C

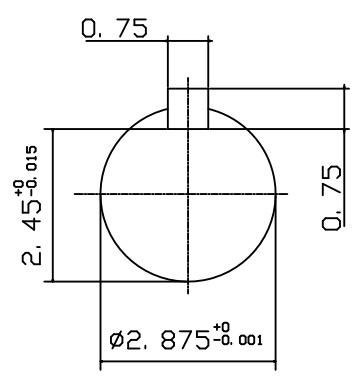
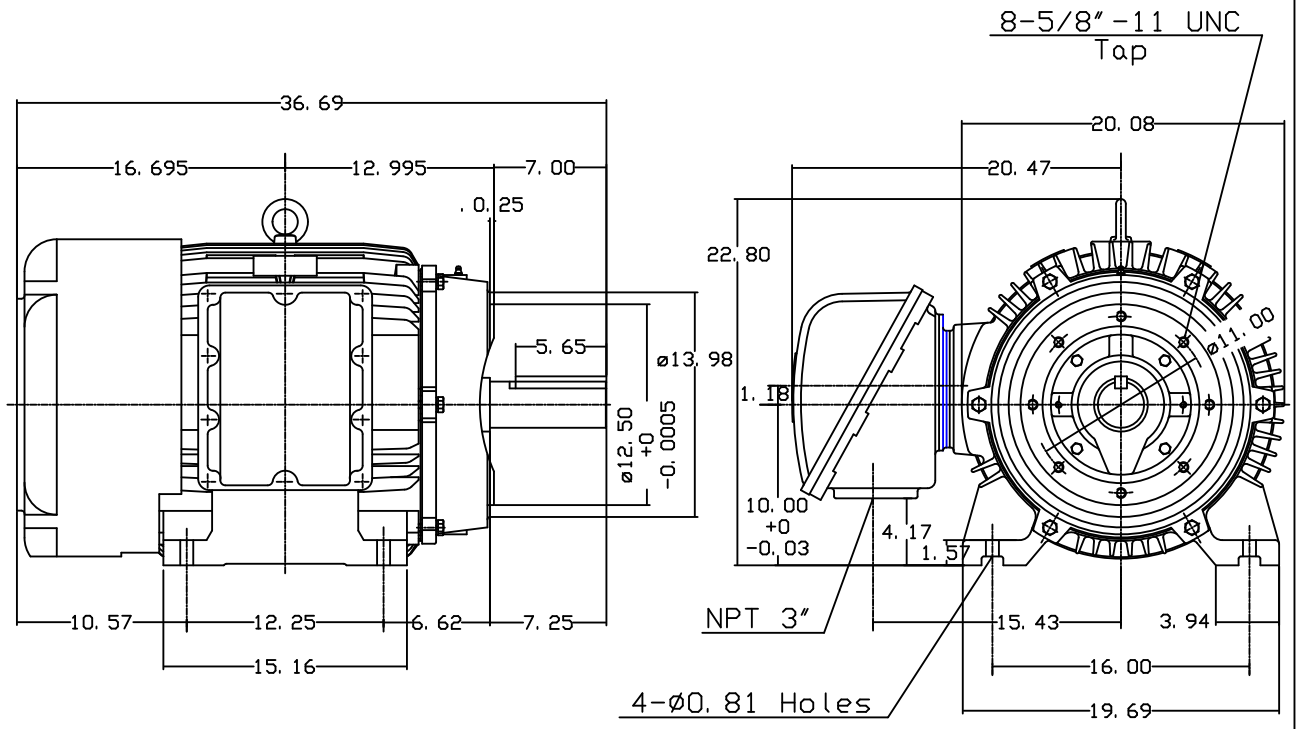
OUTLINE DIMENSIONS
3-PHASE INDUCTION MOTOR

MOTOR TYPE:
AEHHXF
FRAME NO. 404TC

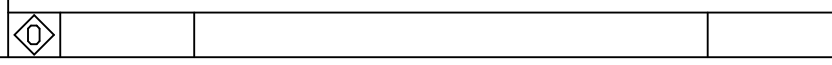
| Pole | HP | KW | Hz | VOLT | Syn. Speed r/min(rpm) |
|------|----|------|----|---------|--------------------------|
| 6 | 60 | 44.8 | 60 | 230/460 | 1200 |

| Ins | Rating | Dimension in | Approx Weight | Bearings |
|-----|--------|--------------|---------------|--------------------|
| F | CONT. | inches | 1300 LBS | DE: 6317 NDE: 6313 |

Totally Enclosed Fan Cooled Type. Squirrel-cage Rotor.



Note:
1. Explosion proof:
Class I Group D and
Class II Group E, F, G.



| | | |
|-------|-------------|----------|
| DWN. | J. H. LIANG | 11-30-00 |
| CHKD. | C. H. KAO | 03-07-01 |
| APPD. | Y. B. HUANG | 03-07-01 |

TECO Westinghouse

DWG NO.
31049M633100