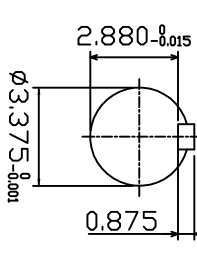
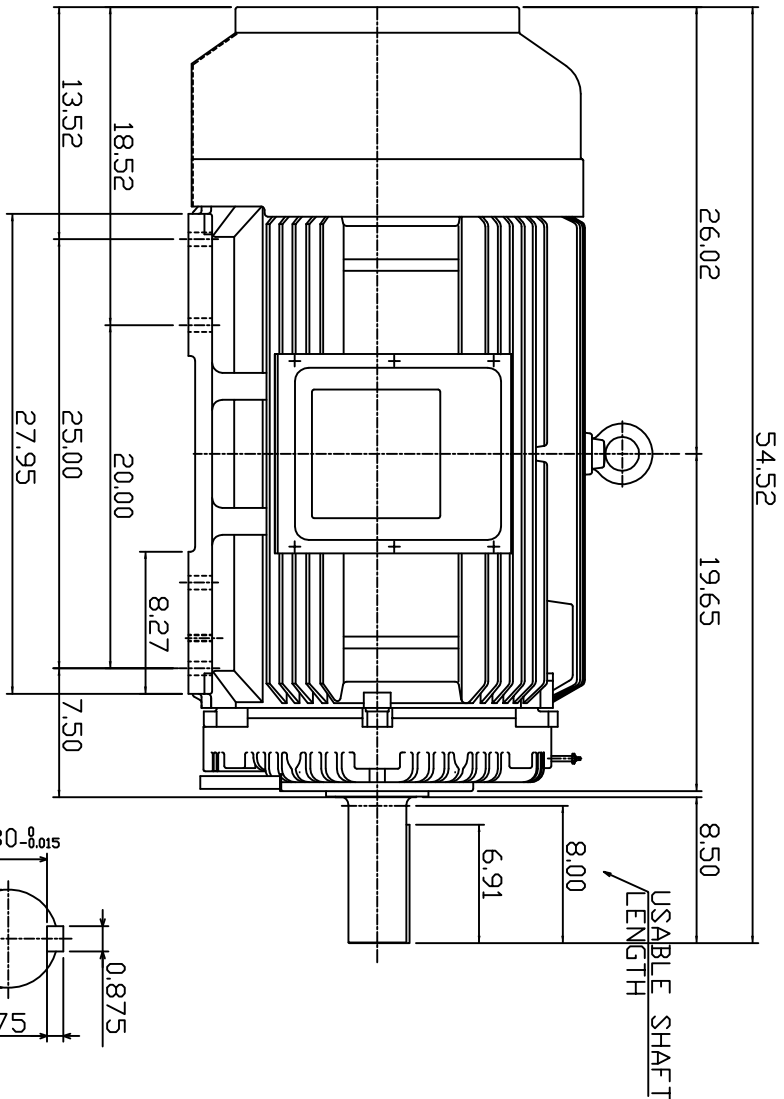
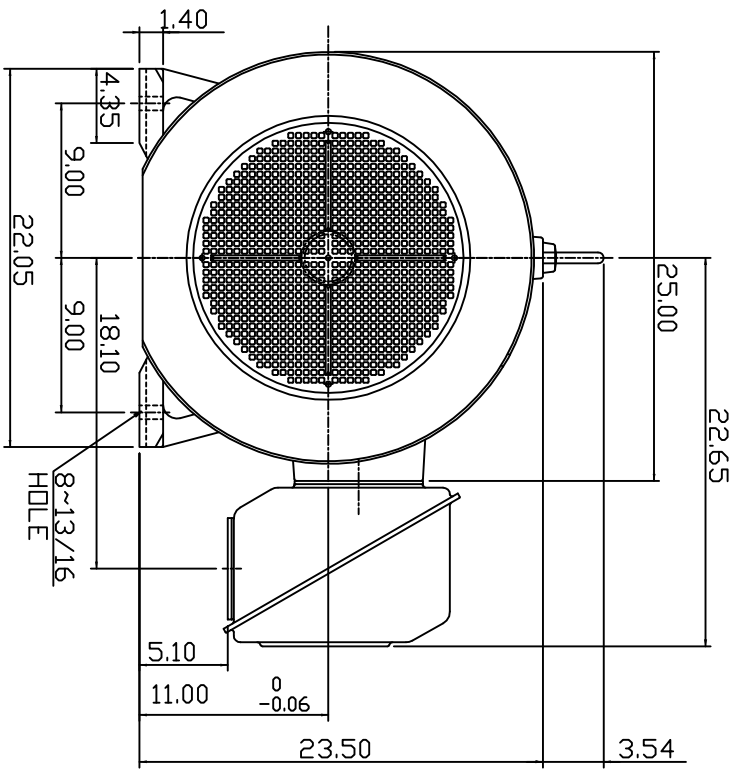


TYPE	OUTPUT		POLE	TIME RATING	VOLTAGE V	Hz	SYN SPEED RPM
	HP.	KW.					
AEH8P	200	149.2	6	CDNT.	380	50	1500

TOTALLY ENCLOSED FAN-COOLED TYPE, SQUIRREL-CAGE ROTOR



- NOTE:
1. DIMENSIONS IN INCHES
  2. FRAME SIZE 449T
  3. F CLASS INSULATION, S.F. 1.0
  4. FOR BELTED APPLICATION
  5. BEARING NO.: DRIVE END: NU320C3  
OPP. DRIVE END: 6316C3
  6. ENCLOSURE: IP44
  7. APPRDX. WEIGHT: 2450 LBS

DWN.	SLEE	JAN. 26 '2011
CHKD.	SLEE	JAN. 26 '2011
APPD.	H.LIU	JAN. 26 '2011

DATE	MARCH 2, 2011	OUTLINE DIMENSIONS
CATALOG #	NP2006R	
TECO Westinghouse		3-PHASE INDUCTION MOTOR
DWG. NO.	3A049DWB10464-28	
REV.	00	