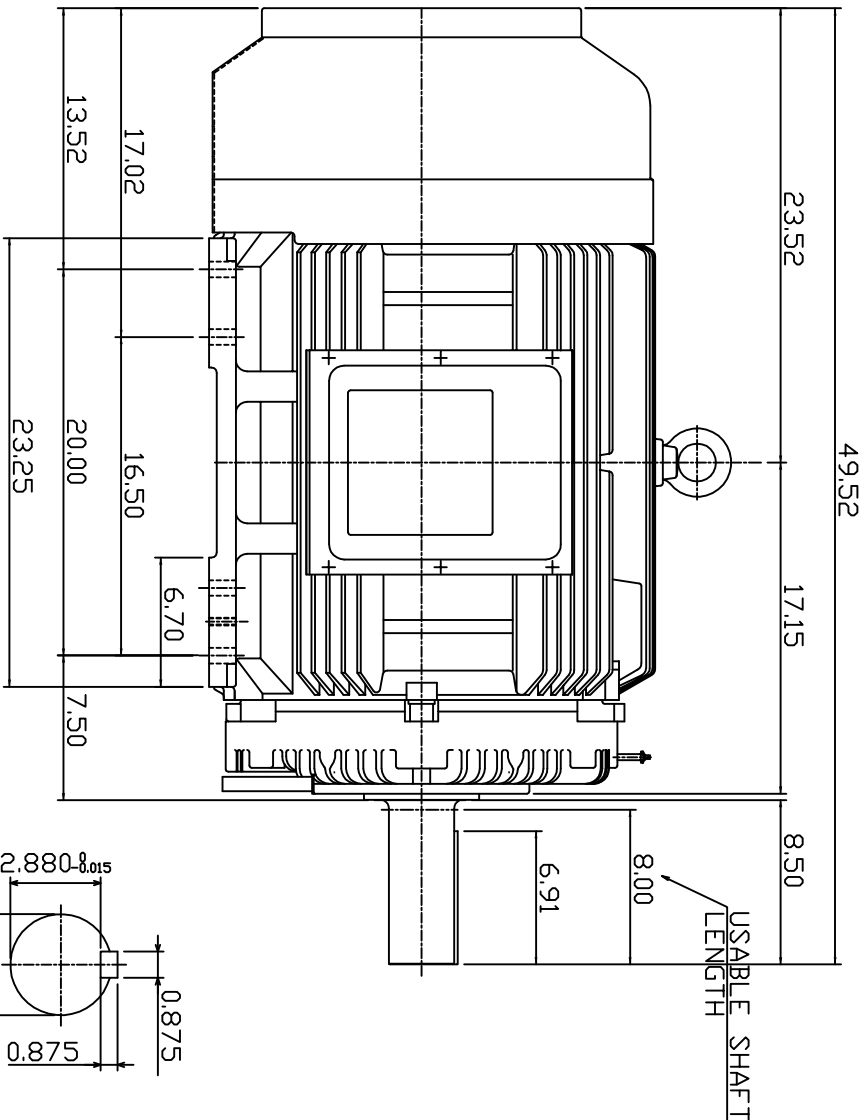
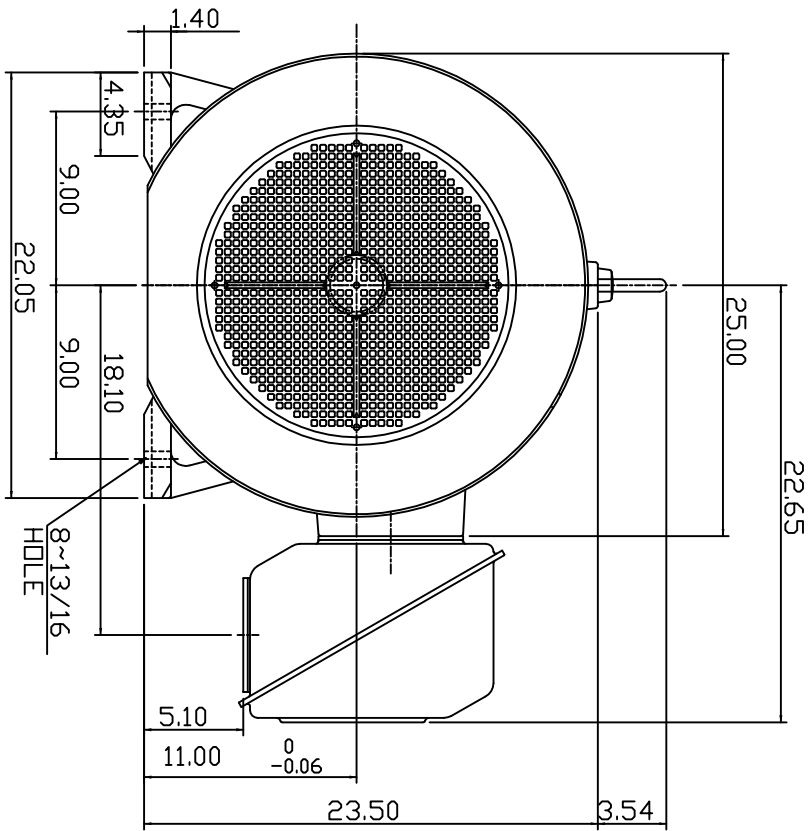


| TYPE | OUTPUT | | POLE | TIME RATING | VOLTAGE V | Hz | SYN SPEED R.P.M |
|--------|--------|-------|------|-------------|-----------|----|-----------------|
| | HP. | KW. | | | | | |
| AEHH8P | 200 | 149.2 | 4 | CDNT. | 380 | 50 | 1500 |

TOTALLY ENCLOSED FAN-COOLED TYPE, SQUIRREL-CAGE ROTOR



SHAFT END
[ENLARGED VIEW]

- NOTE:
1. DIMENSIONS IN INCHES
 2. FRAME SIZE 447T
 3. F CLASS INSULATION, S.F. 1.0
 4. FOR DIRECT FLEXIBLE COUPLING
 5. BEARING NO.: DRIVE END: 6320C3
DPP, DRIVE END: 6316C3
 6. ENCLDSURE: IP44
 7. APPRDX. WEIGHT: 2300 LBS

| | | |
|-------|-------|---------------|
| DWN. | SLEE | JAN. 26 -2011 |
| CHKD. | SLEE | JAN. 26 -2011 |
| APPD. | H.LIU | JAN. 26 -2011 |

DATE
MARCH 2, 2011
CATALOG #:
NP2004

OUTLINE DIMENSIONS
3-PHASE INDUCTION MOTOR



DWG NO. 3A049DWB10464-27
REV: 00