

DATE
DEC. 13, 2010
CAT. #: NP0202

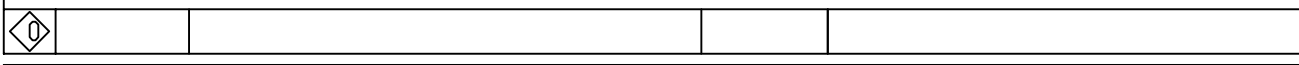
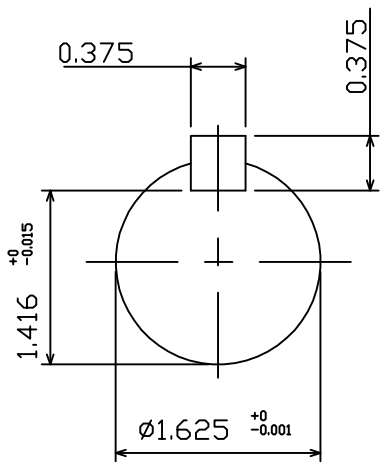
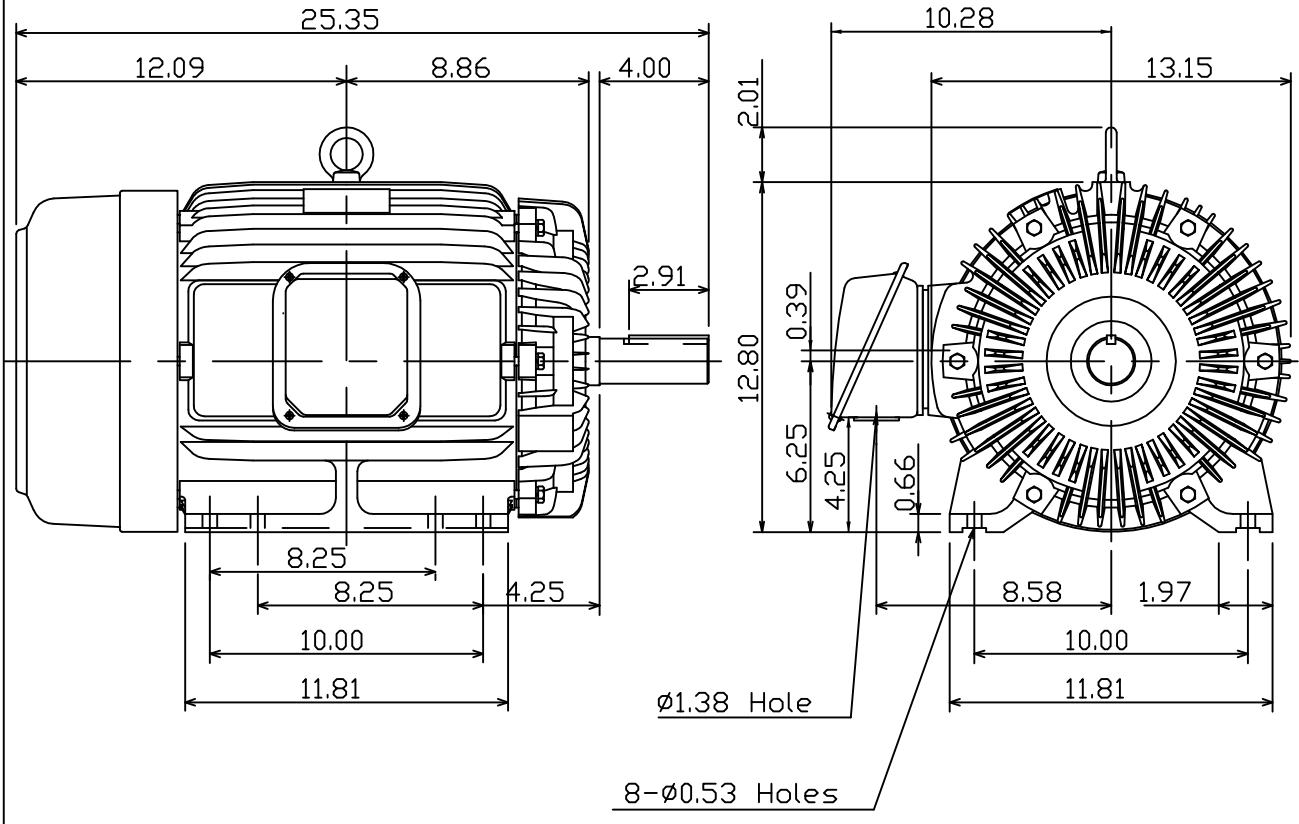
OUTLINE DIMENSIONS
3-PHASE INDUCTION MOTOR

MOTOR TYPE:
AEHH8P
FRAME NO. 256T

| Pole | HP | kW | Hz | VOLT | Syn.Speed r/min(rpm) |
|------|----|------|----|---------|-------------------------|
| 2 | 20 | 14.9 | 50 | 190/380 | 3000 |

| Ins | Rating | Dimension in | Approx Weight | Bearings |
|-----|--------|--------------|---------------|------------------------|
| F | CONT. | inch | 311 lbs. | DE: 6309ZZ NDE: 6307ZZ |

Totally Enclosed Fan Cooled Squirrel Cage Rotor.



| | | |
|-------|----------|----------|
| DWN. | K.L.KUD | 12 07 10 |
| CHKD. | K.L.KUD | 12 07 10 |
| APPD. | M.C.TSAI | 12 07 10 |



DWG NO.
31049J349210