

DATE  
JAN. 15, 2015

CAT. #: NP0156G

# OUTLINE DIMENSIONS

## 3-PHASE INDUCTION MOTOR

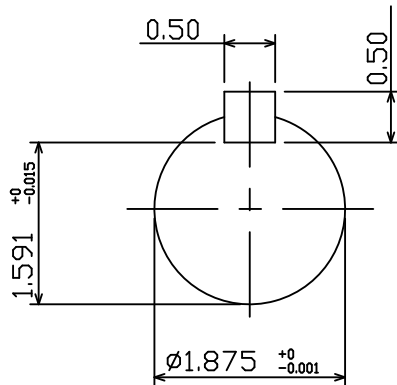
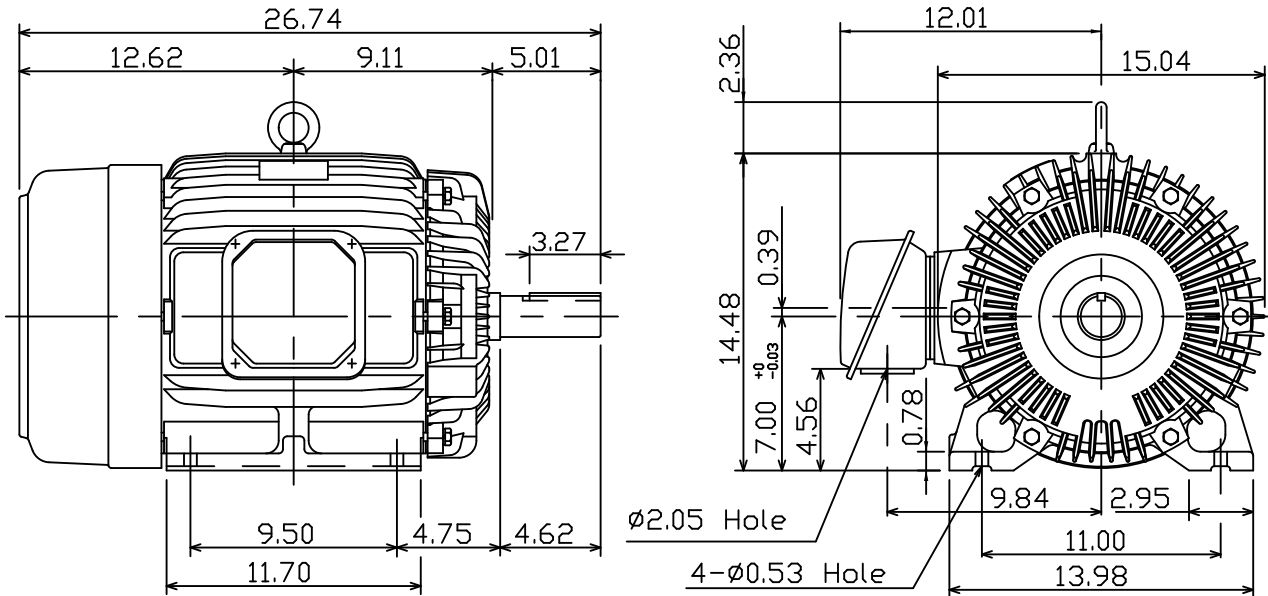
MOTOR TYPE:  
AEHH8P-SGR

FRAME NO. 284T

Pole	HP	kW	Hz	VOLT	Syn.Speed r/min(rpm)
6	15	11.2	60	230/460	1200

Ins	Rating	Dimension in	Approx Weight	Bearings
F	CONT.	inches	399 lbs.	DE: 6311ZZ NDE: 6310ZZ

Totally Enclosed Fan-Cooled Type.Squirrel-Cage Rotor.



NOTE:  
1. Shaft Grounding Ring installed-NDE

12.06.10 郭耿良

DWN, J.H.LIANG 06-25-98  
 CHKD, C.H.KAO 06-29-98  
 APPD, Y.B.HUANG 06-29-98



DWG NO.  
31057H206002