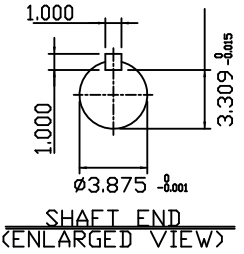
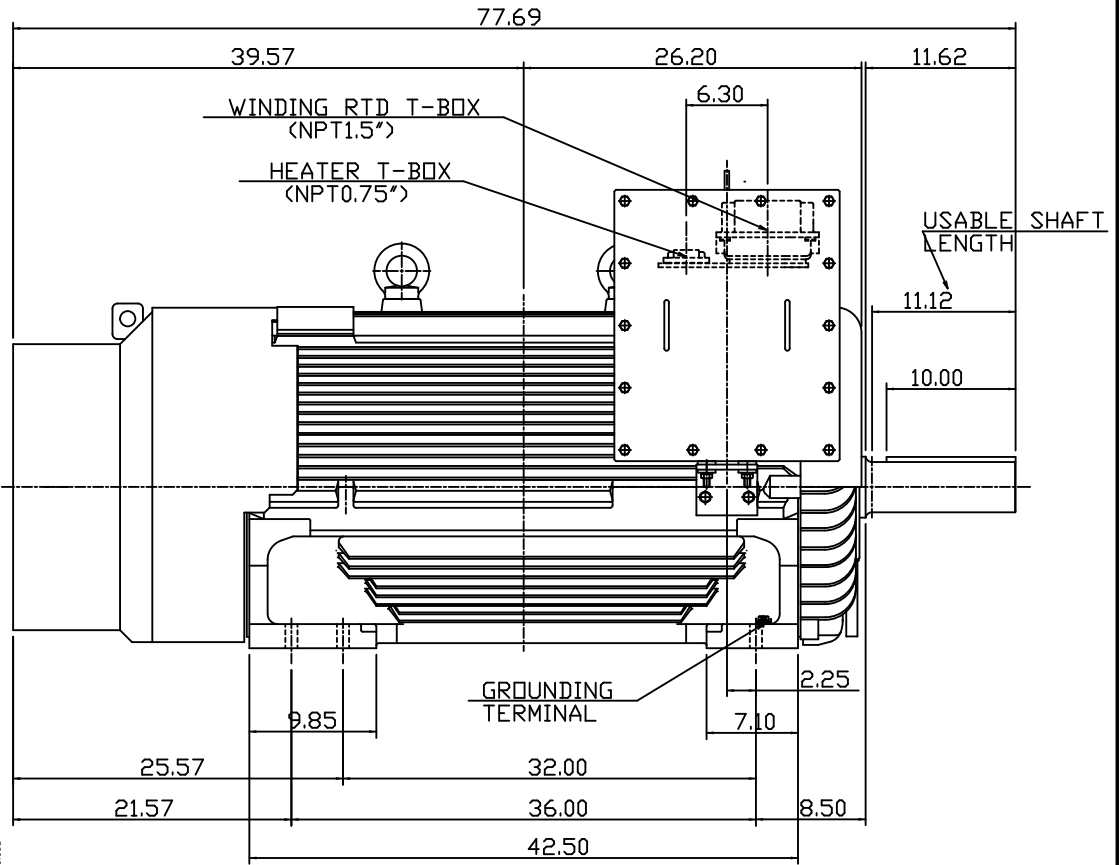
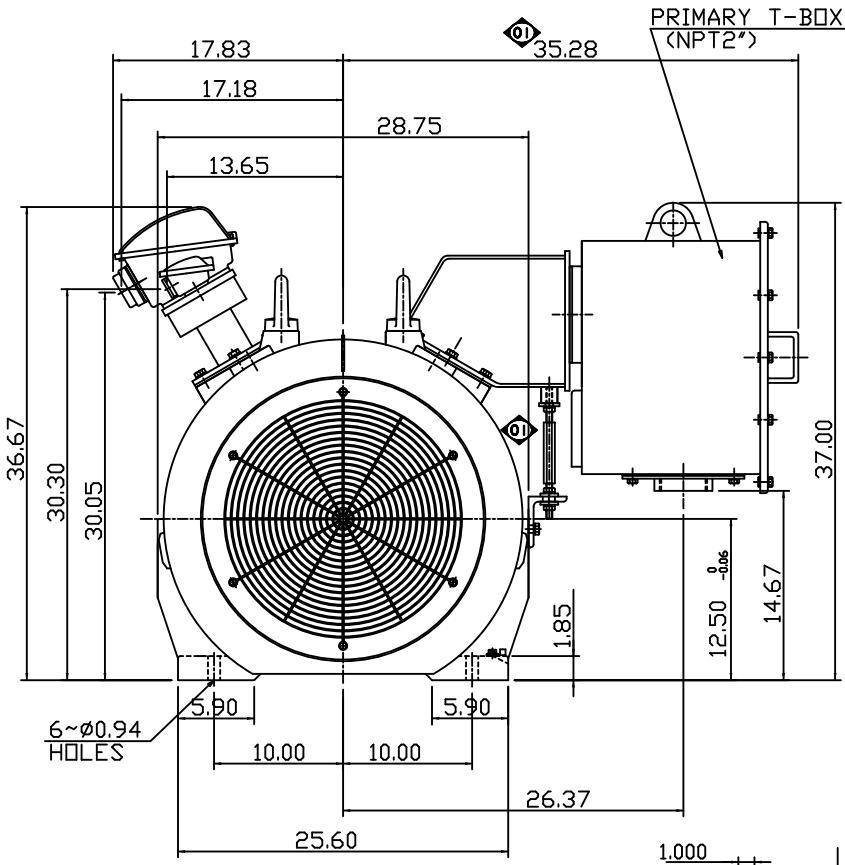


TYPE	OUTPUT		POLE	TIME RATING	VOLTAGE V	Hz	SYN.SPEED R.P.M
	HP.	kW.					
AEHGK	400	298	4	CONT.	2300/4160	60	1800

TOTALLY ENCLOSED FAN-COOLED TYPE, SQUIRREL-CAGE ROTOR



- NOTE:
- DIMENSIONS IN INCH
  - FRAME NO. 5011B(5010B)
  - F CLASS INSULATION,S.F.1.15
  - FOR DIRECT FLEXIBLE COUPLING
  - ENCLOSURE: IP54
  - WITH SPACE HEATER & WINDING RTD
  - BEARING SIZE: DRIVE-END 6324  
OPP. DRIVE-END 6320
  - MOTOR APPROX. WEIGHT: 4800LBS

DATE	OCT. 31, 2014	OUTLINE DIMENSIONS
CATALOG #	KG4004	3-PHASE INDUCTION MOTOR
DWN.	F.FAN	AUG-31-2011
CHKD.	H.HUANG	AUG-31-2011
APPD.	B.LIN	AUG-31-2011
TECO Westinghouse		DWG NO. REV: 01
		4A040G946