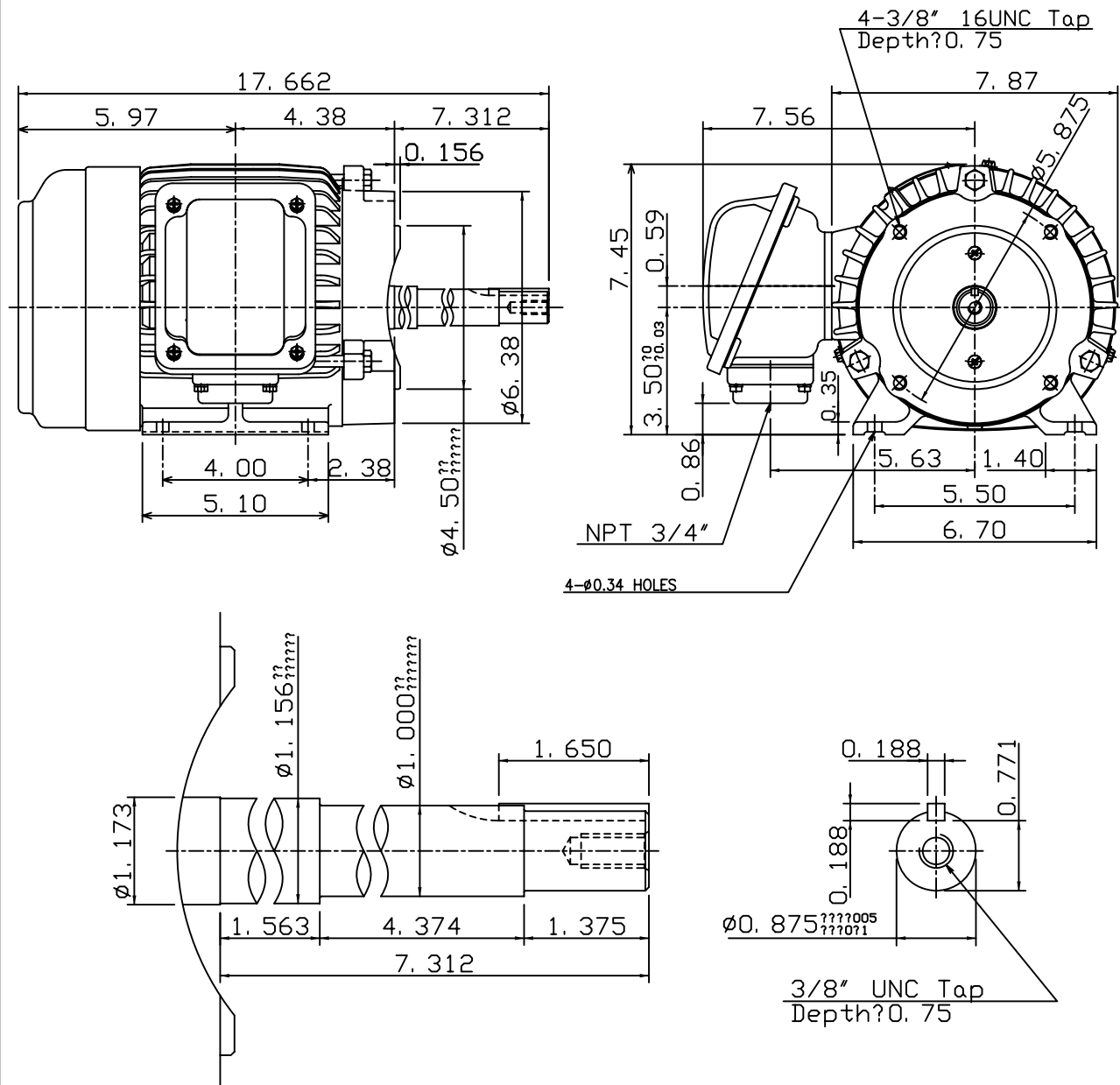


DATE Nov. 7, 2008	OUTLINE DIMENSIONS 3-PHASE INDUCTION MOTOR	MOTOR TYPE: AEEAJP-NE
Cat #:		FRAME NO. 143JP

Pole	HP	kW	Hz	VOLT	Syn. Speed r/min(rpm)
-	-	-	-	-	-
Ins	Rating	Dimension in	Approx Weight	Bearings	
F	CONT.	inches	48 lbs	DE: 6206ZZ	NDE: 6205ZZ

Totally Enclosed Fan Cooled Type. Squirrel Cage Rotor.



DWN.	J. H. LIANG	01-10-08	TEC Westinghouse	DWG NO.
CHKD.	H. C. YAN	02-12-08		31049H737040
APPD.	M. C. TSAI	02-12-08		