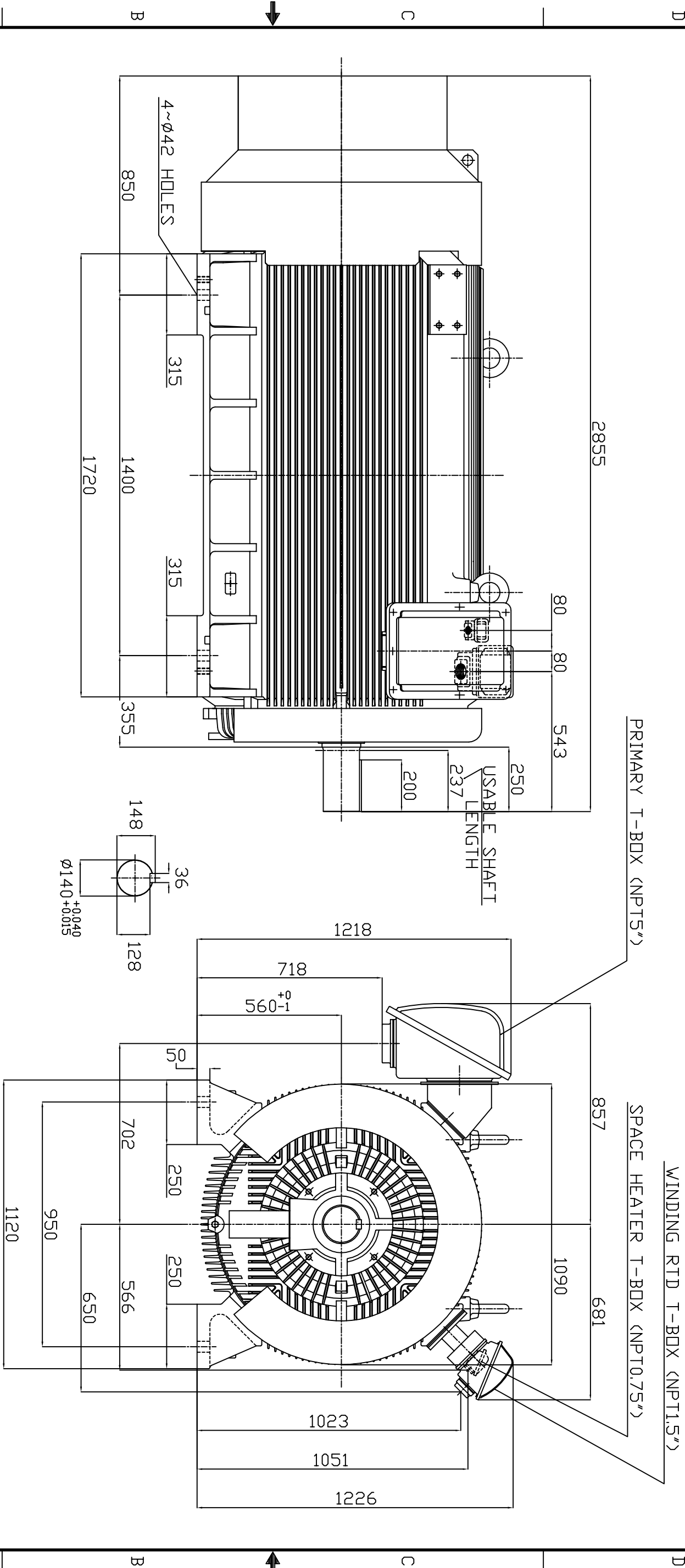


| TYPE   | OUTPUT |      | POLE | TIME RATING | VOLTAGE V | Hz | SYN.SPEED R.P.M |
|--------|--------|------|------|-------------|-----------|----|-----------------|
|        | HP     | KW   |      |             |           |    |                 |
| AEJHTK | 1750   | 1320 | 6    | CDNT.       | 2300/4160 | 60 | 1200            |

TOTALLY ENCLOSED FAN COOLED TYPE. SQUIRREL CAGE ROTOR



1. DIMENSIONS IN MM
2. FRAME NO. 560C
3. F CLASS INSULATION
4. FOR DIRECT FLEXIBLE COUPLING
5. WITH SPACE HEATER 120 VOLT SINGLE PHASE 500 WATTS
6. WITH 100 OHM PLATINUM WINDING RTD'S 2/PHASE
7. BEARING SIZE: DRIVE END: 6330  
NON-DRIVE END: 6326M/C3 VL024
8. MOTOR APPROX. WEIGHT: 8200 KGS

TW-66C

|       |         |               |
|-------|---------|---------------|
| DW/N. | W.L.LIN | APR. 22. 2003 |
| CHKD. | W.L.LIN | APR. 22. 2003 |
| APPD. | C.WANG  | APR. 22. 2003 |

|                   |             |                         |
|-------------------|-------------|-------------------------|
| DATE              | MAY 7, 2004 | OUTLINE DIMENSIONS      |
| CATALOG NO.       | JH17506     | 3-PHASE INDUCTION MOTOR |
| TECO Westinghouse |             | DWG NO. 3A040T4112      |
|                   |             | REV: 00                 |