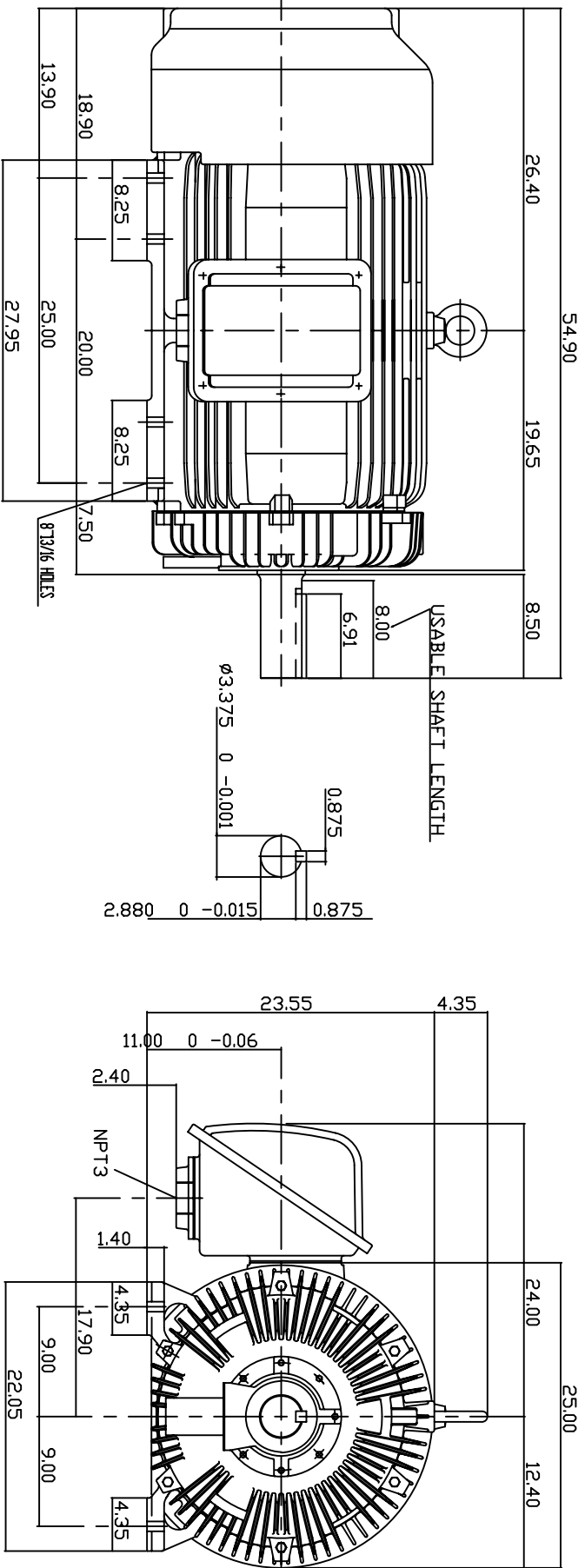


TYPE	OUTPUT		POLE	TIME RATING	VOLTAGE	Hz	SYN.SPEED R.P.M
	HP.	KW.					
AEHH	300	223.8	4	CONT.	460	60	1800

TOTALLY ENCLOSED FAN-COOLED TYPE, SQUIRREL-CAGE ROTOR



NOTE:

1. DIMENSIONS IN INCH
2. FRAME NO. 449T
3. F CLASS INSULATION, S.F.115
4. FOR DIRECT FLEXIBLE COUPLING
5. ENCLOSURE: IP55
6. BEARING SIZE: DRIVE END: 6320C3
NON-DRIVE END: 6316C3
7. APPROX. WEIGHT: 2880 LBS
8. NON-SPARKING FAN.
9. NOISE: BELOW 83 DBA AT 1 METER, NO LOAD.

TW-56C

DATE	CHKD.	APPD.
06-20-05	H.HUANG	C.WANG
CATALOG #HH3004	H.HUANG	C.WANG
3-PHASE INDUCTION MOTOR	H.HUANG	C.WANG
DWG NO. 3A040Y702	H.HUANG	C.WANG
REV: 00	H.HUANG	C.WANG

DATE	DATE	DATE
06-20-05	FEB 18 2005	FEB 18 2005
CATALOG #HH3004	FEB 18 2005	FEB 18 2005
3-PHASE INDUCTION MOTOR	FEB 18 2005	FEB 18 2005
DWG NO. 3A040Y702	FEB 18 2005	FEB 18 2005
REV: 00	FEB 18 2005	FEB 18 2005

TECO Westinghouse

DWG NO. 3A040Y702