

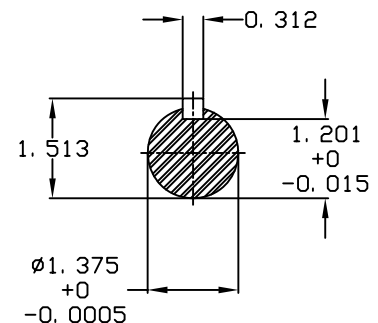
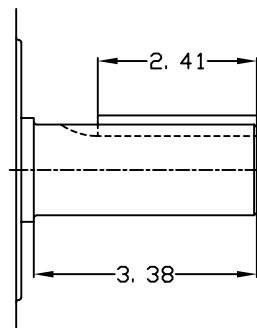
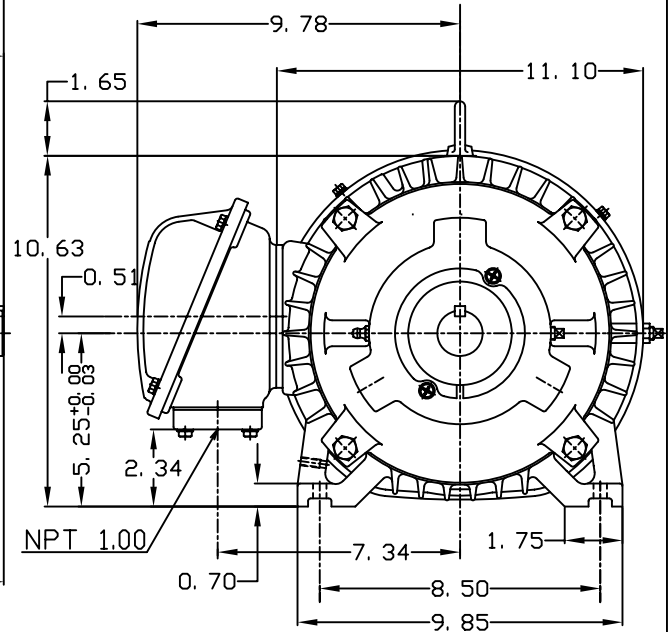
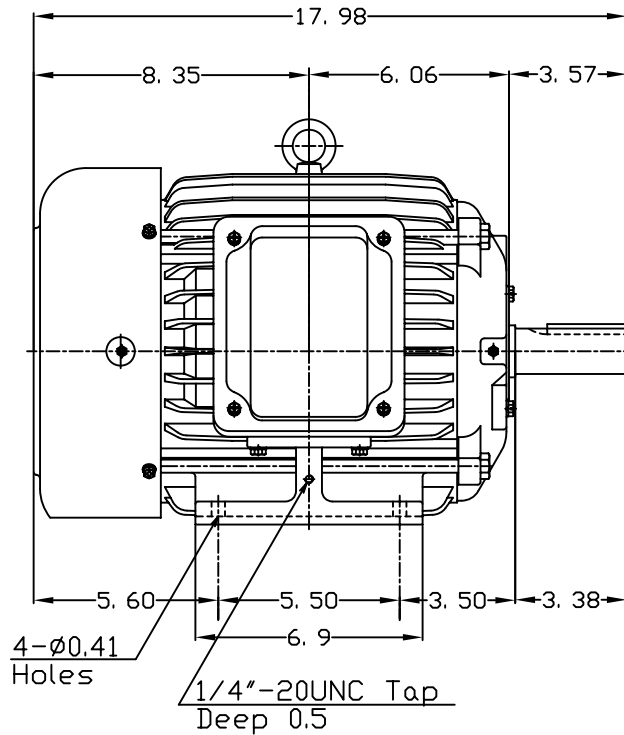
DATE
APRIL 26, 2004
CATALOG NO.
HH0036-50

OUTLINE DIMENSIONS 3-PHASE INDUCTION MOTOR

MOTOR TYPE:
AEHH
FRAME NO. 213T

Pole	HP	KW	Hz	VOLT	Syn. Speed RPM
6	3	2.2	50	380	1000
Ins	Rating	Dimension in	Approx Weight	Bearings	
F	CONT.	inches	167 lbs.	DE: 6308ZC35C	NDE: 6306ZC35C

Totally Enclosed Fan-Cooled Type. Squirrel-Cage Rotor.



DWN. 胡峰誠 11-12-98
CHKD. 羅清水 11-23-98
APPD. 黃友伯 11-23-98

TEC Westinghouse

DWG NO.
31049M893000