

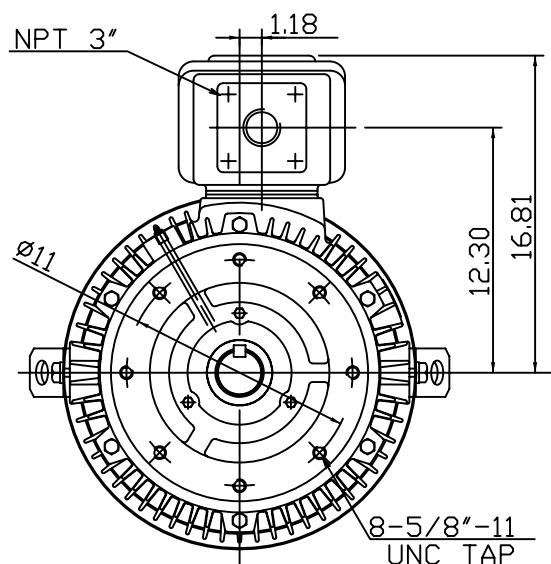
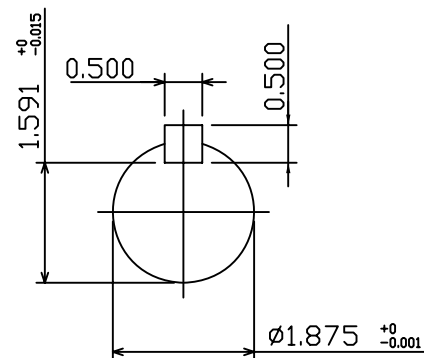
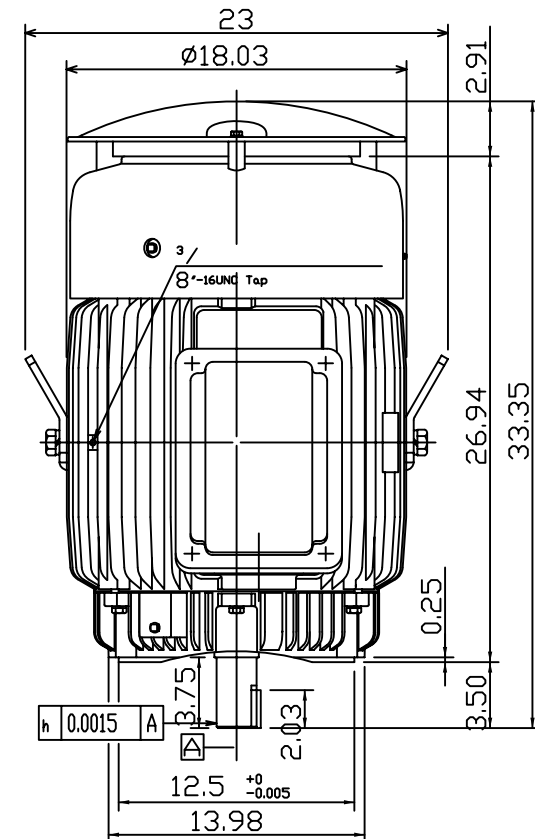
DATE  
January 21, 2009  
CAT. #:

# OUTLINE DIMENSIONS 3-PHASE INDUCTION MOTOR

MOTOR TYPE:  
AEUH8B-DC  
FRAME NO. 364TSC

Pole	HP	kW	Hz	VOLT	Syn.Speed r/min(rpm)
2					
Ins	Rating	Dimension in	Approx Weight	Bearings	
F	CONT.	inches	844 LBS	DE: 6312ZC3 NDE: 6212ZC3	

Totally Enclosed Fan-Cooled Type. Squirrel-Cage Rotor.



Note:  
1. C/W Inpro/Seal In Both End Brackets.  
2. Motor Vibration:10?



DWN.	???????	01 01 09
CHKD.	???????	01 02 09
APPD.	???????	01 02 09

TEC Westinghouse

DWG NO.  
31057H178730