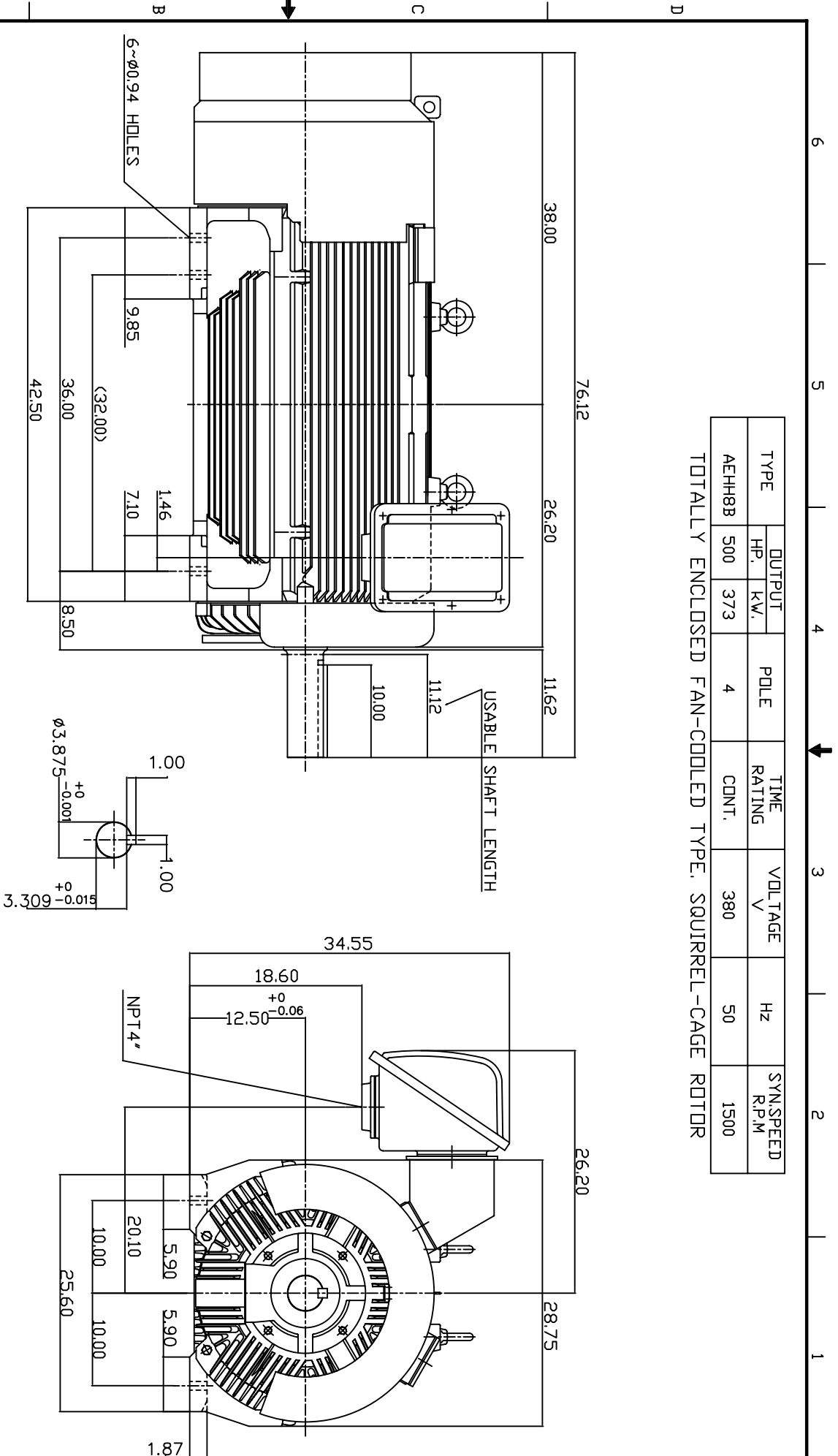


TYPE	OUTPUT		POLE	TIME RATING	VOLTAGE	Hz	SYN SPEED R.P.M
	HP.	KW.					
AEH8B	500	373	4	CDNT.	380	50	1500

TOTALLY ENCLOSED FAN-COOLED TYPE. SQUIRREL-CAGE ROTOR



- NOTE:
1. DIMENSIONS IN INCH.
  2. FRAME NO. 501B (5010B)
  3. F CLASS INSULATION S.F.10
  4. FOR DIRECT FLEXIBLE COUPLING
  5. BEARING SIZE: NON-DRIVE END: 6324
  6. MOTOR APPROX. WEIGHT: 5000 LBS
  7. ENCLOSURE: IP55
  8. INPRD SEAL ON BOTH ENDS.
  9. NON-SPARKING FAN.
  10. NOISE BELOW 83 DBA AT 1 METER AT NO LOAD.
  11. VIBRATION VERTICAL/HORIZONTAL BELOW 0.08 IN/SEC AXIAL BELOW 0.06 IN/SEC.

TW-56C

DATE	DATE	DATE	DATE
DCT. 22, 2007	MAR. 03 -2003	MAR. 03 -2003	MAR. 03 -2003
CATALOG NO.	W.L.LIN	W.L.LIN	W.L.LIN
HB5004-50	MAR. 03 -2003	MAR. 03 -2003	MAR. 03 -2003
3-PHASE INDUCTION MOTOR	CHKD.	APPD.	APPD.
DWG NO.	C.WANG	C.WANG	C.WANG
3A040T177-2	MAR. 03 -2003	MAR. 03 -2003	MAR. 03 -2003
REV: 00			

