

DATE  
Sept. 13, 2005  
CAT. #: HB1002

# OUTLINE DIMENSIONS

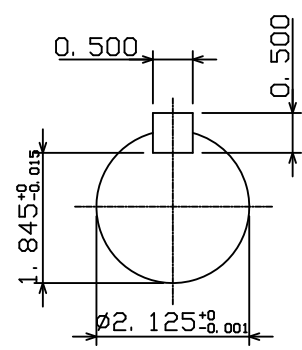
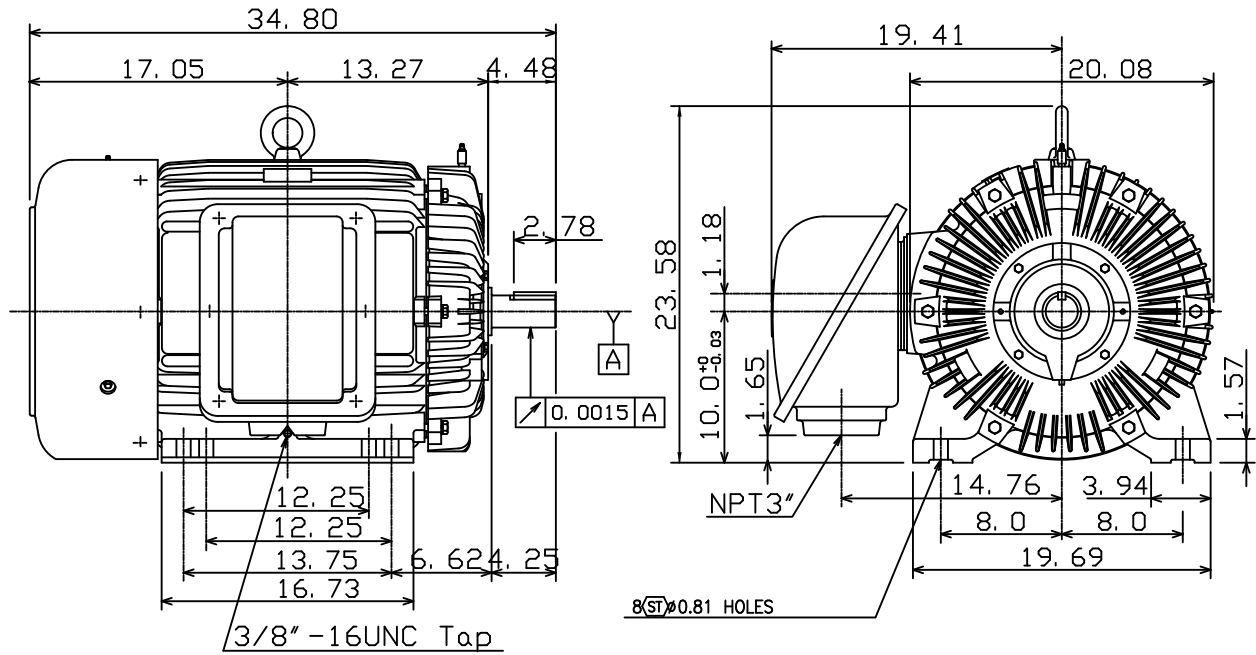
## 3-PHASE INDUCTION MOTOR

MOTOR TYPE:  
AEHH8B  
FRAME NO. 405TS

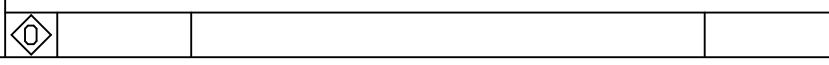
| Pole | HP  | kW | Hz | VOLT | Syn. Speed<br>r/min(rpm) |
|------|-----|----|----|------|--------------------------|
| 2    | 100 | 75 | 60 | 460  | 3600                     |

| Ins | Rating | Dimension in | Approx Weight | Bearings                  |
|-----|--------|--------------|---------------|---------------------------|
| F   | CONT.  | inches       | 1144 lbs.     | DE: 6313C3 NDE: 6313ZC35C |

Totally Enclosed Fan Cooled Type, Squirrel-cage Rotor.



- Note:
1. Motor Vibration: 10μ.
  2. Inpro/Seal in Both End Brackets



|       |            |          |
|-------|------------|----------|
| DWN.  | K. L. KUO  | 01-20-05 |
| CHKD. | C. H. KAO  | 02-02-05 |
| APPD. | M. C. TSAI | 02-02-05 |



DWG NO.  
31049M634630