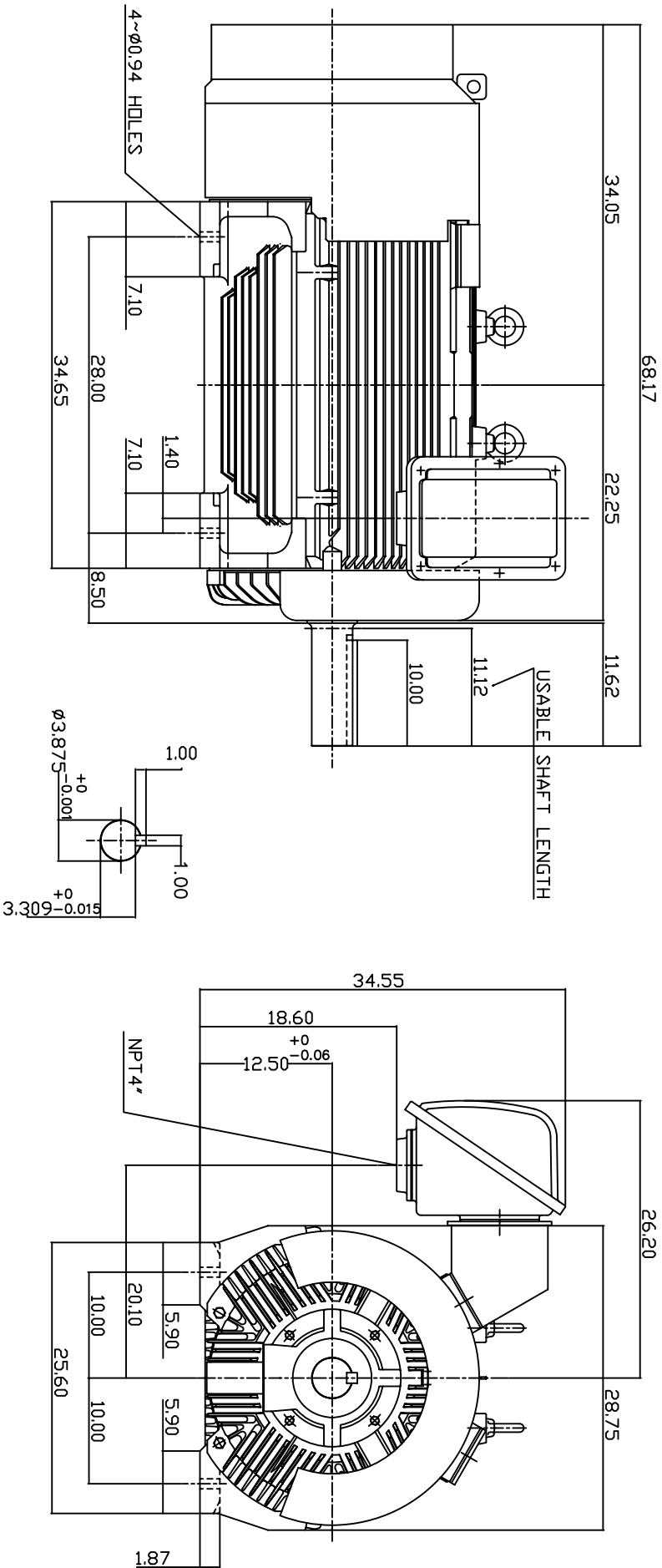


TYPE	OUTPUT		POLE	TIME RATING	VOLTAGE	Hz	SYN SPEED R.P.M
	HP.	KW.					
AEH8N	400	298	4	CDNT.	380	50	1500

TOTALLY ENCLOSED FAN-COOLED TYPE, SQUIRREL-CAGE ROTOR



NOTE:

1. DIMENSIONS IN INCH.
2. FRAME NO. 5009B
3. F CLASS INSULATION, S.F.1.0
4. FOR DIRECT FLEXIBLE COUPLING
5. BEARING SIZE: DRIVE END: 6324
NON-DRIVE END: 6320
6. MOTOR APPROX. WEIGHT: 3700 LBS

TV-56C

DWN.	W.LLIN	DATE
CHKD.	W.LLIN	MAR-03-2003
APPD.	C.WANG	MAR-03-2003

DATE	DESCRIPTION
APRIL 23, 2004	OUTLINE DIMENSIONS
CATALOG NO.	3-PHASE INDUCTION MOTOR
EP4004-50	



DWG NO. 3A040T179-2
REV: 00