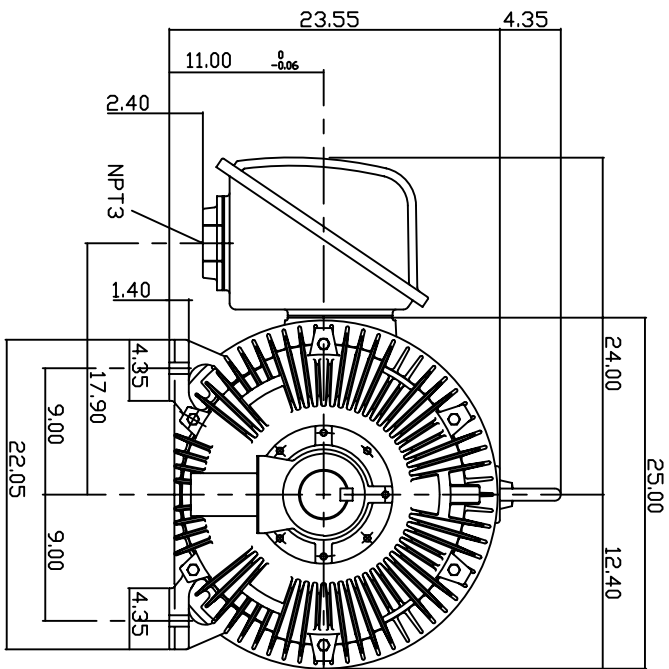
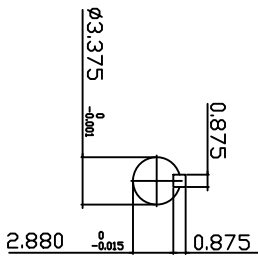
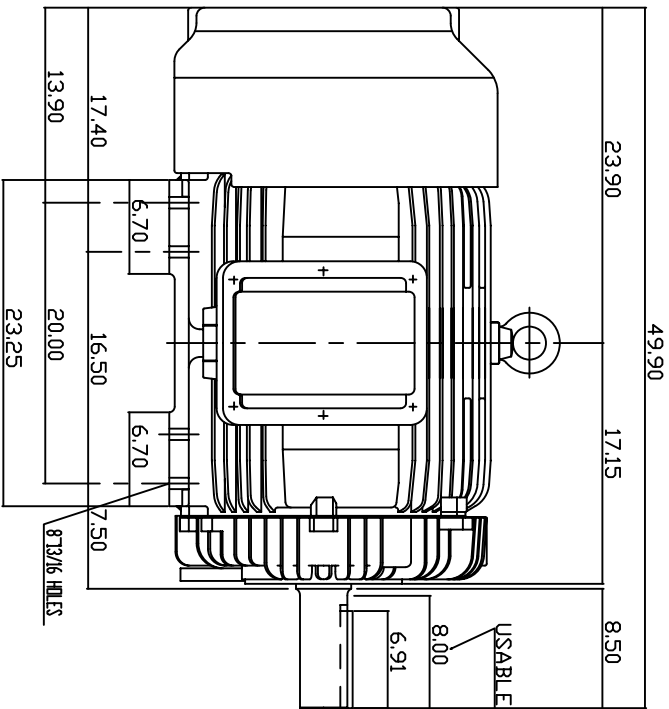


TYPE	OUTPUT HP. KW.	POLE	TIME RATING CNT.	VOLTAGE V	Hz	SYNSPEED R.P.M
AEH8N	200 149.2	4		380	50	1500

TOTALLY ENCLOSED FAN-COOLED TYPE, SQUIRREL-CAGE ROTOR



NOTE:

1. DIMENSIONS IN INCH
2. FRAME NO. 447T
3. F CLASS INSULATION, S.F.115
4. FOR DIRECT FLEXIBLE COUPLING
5. ENCLOSURE: IP54
6. BEARING SIZE: DRIVE END: 6320
NON-DRIVE END: 6316
7. APPROX. WEIGHT: 2450 LBS

TW-56C

DWN. N.QIN	JAN 13 2005
CHKD. H.HUANG	JAN 13 2005
APPD. C.WANG	JAN 13 2005

DATE 20050617	OUTLINE DIMENSIONS
CAT. # EP2004-50	3-PHASE INDUCTION MOTOR

TECO Westinghouse
DWG NO. 3A040Y597
REV: 00