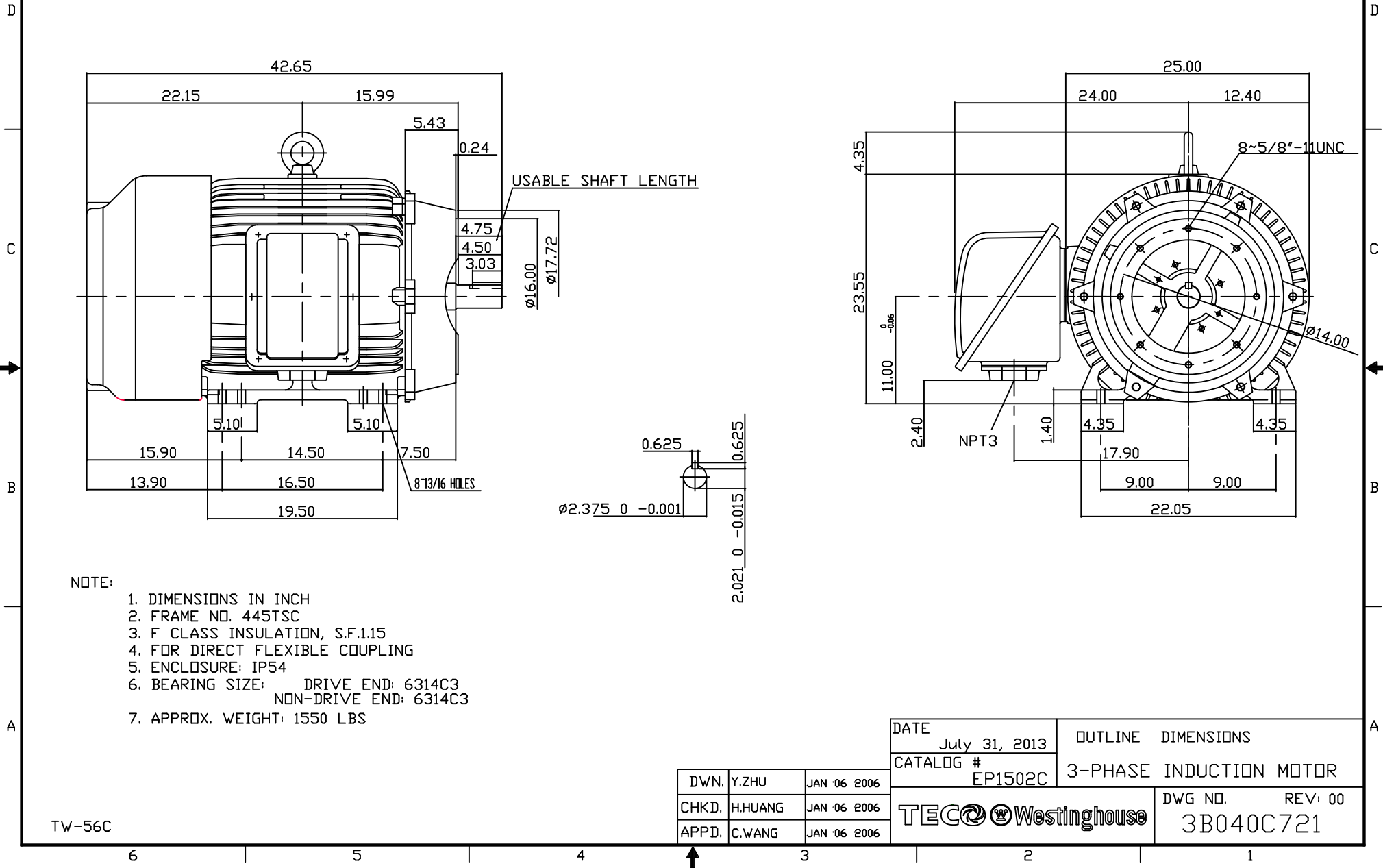


TYPE	OUTPUT		POLE	TIME RATING	VOLTAGE V	Hz	SYN.SPEED R.P.M
	HP.	kW.					
AEHH8NCF	150	111.9	2	CONT.	460	60	3600

TOTALLY ENCLOSED FAN-COOLED TYPE, SQUIRREL-CAGE ROTOR



TW-56C

DATE	July 31, 2013	OUTLINE DIMENSIONS
CATALOG #	EP1502C	3-PHASE INDUCTION MOTOR
DWN. Y.ZHU	JAN '06 2006	DWG NO. REV: 00
CHKD. H.HUANG	JAN '06 2006	3B040C721
APPD. C.WANG	JAN '06 2006	