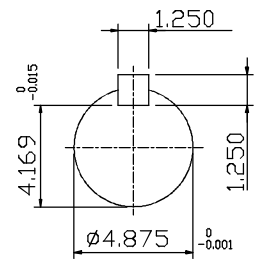
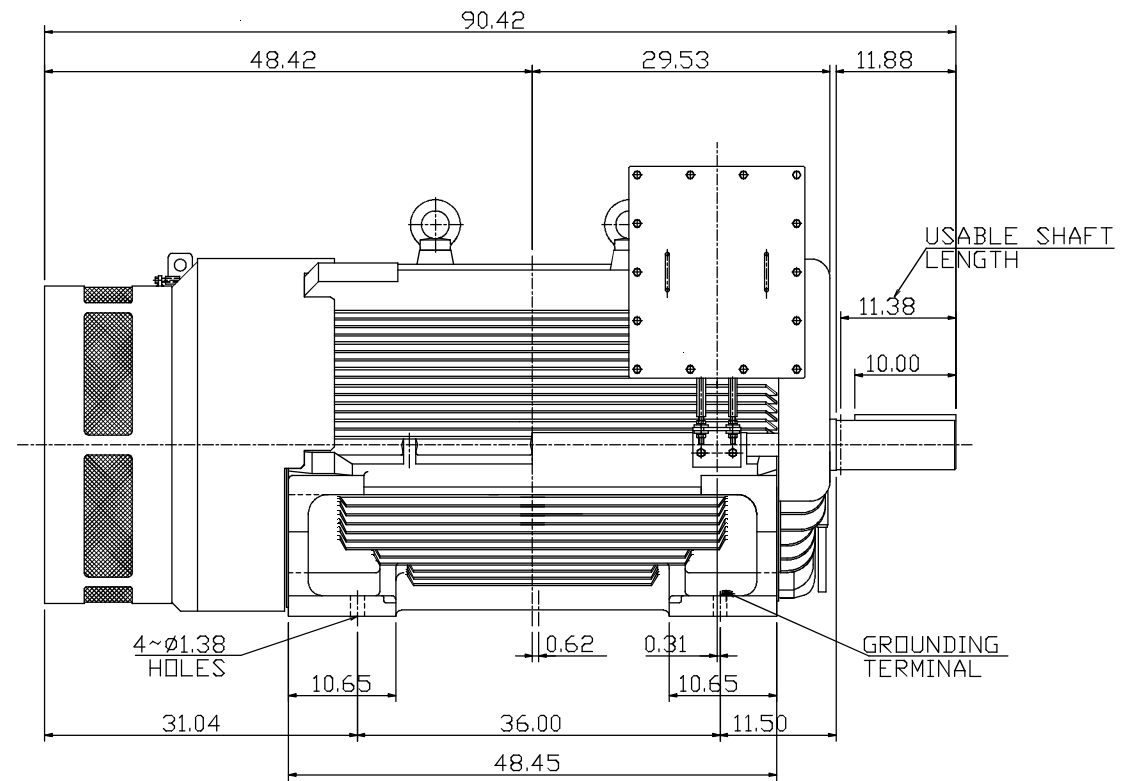
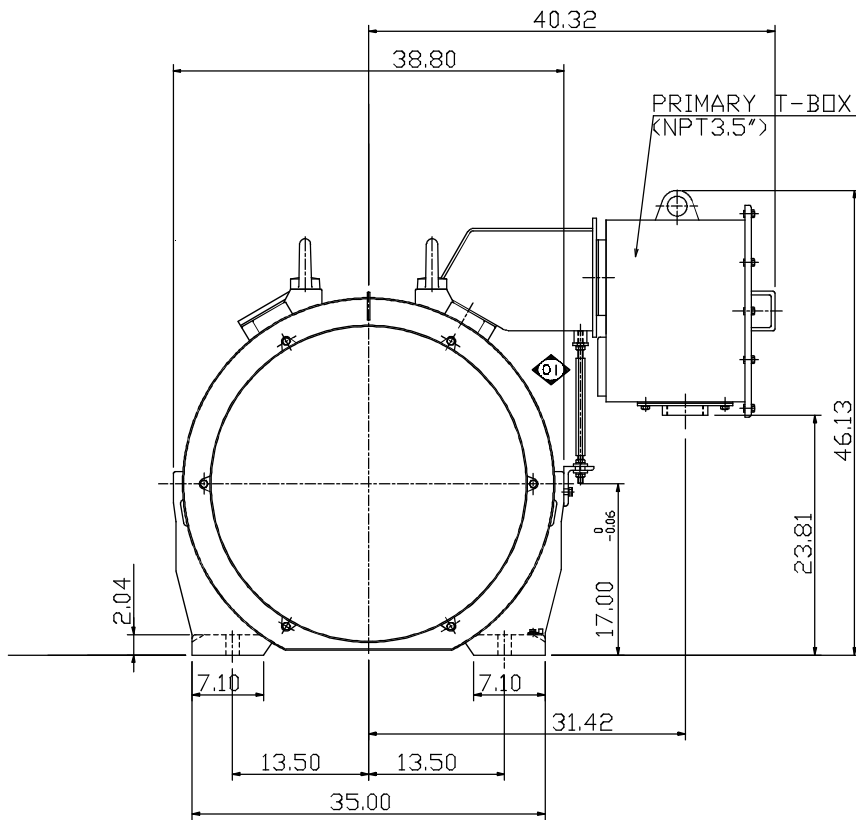


TYPE	OUTPUT		POLE	TIME RATING	VOLTAGE V	Hz	SYN.SPEED R.P.M
	HP.	KW.					
AEHE	800	597	6	CONT.	460	60	1200

TOTALLY ENCLOSED FAN-COOLED TYPE, SQUIRREL-CAGE ROTOR



SHAFT END  
(ENLARGED VIEW)

NOTE:

- DIMENSIONS IN INCH
- FRAME NO. 6808B
- F CLASS INSULATION, S.F.115
- FOR DIRECT FLEXIBLE COUPLING
- ENCLOSURE: IP55
- BEARING SIZE: DRIVE-END 6326  
OPP. DRIVE-END 6322
- MOTOR APPROX. WEIGHT: 8000 LBS

DATE	OUTLINE DIMENSIONS	
CATALOG # E8006	3-PHASE INDUCTION MOTOR	
DWN. Y.DU	AUG-29-2011	TECO Westinghouse
CHKD. H.HUANG	AUG-29-2011	
APPD. B.LIN	AUG-29-2011	
DWG NO. 4A040G955		REV: 01