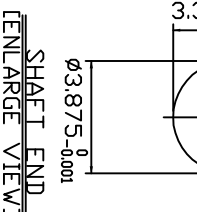
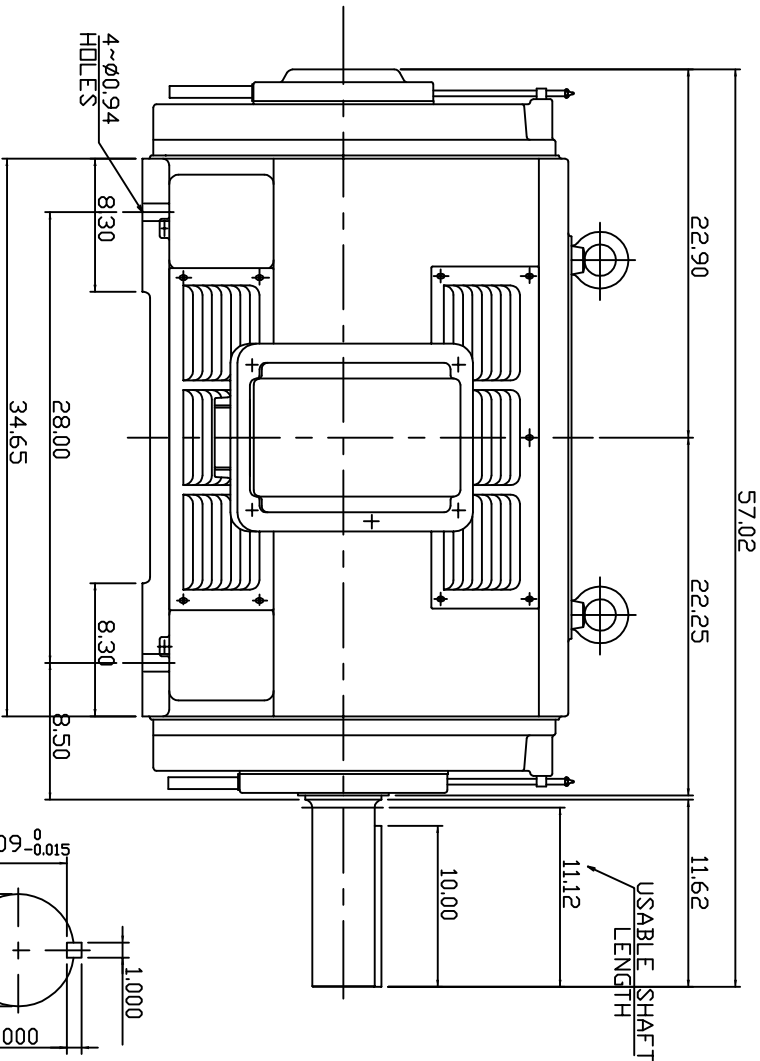
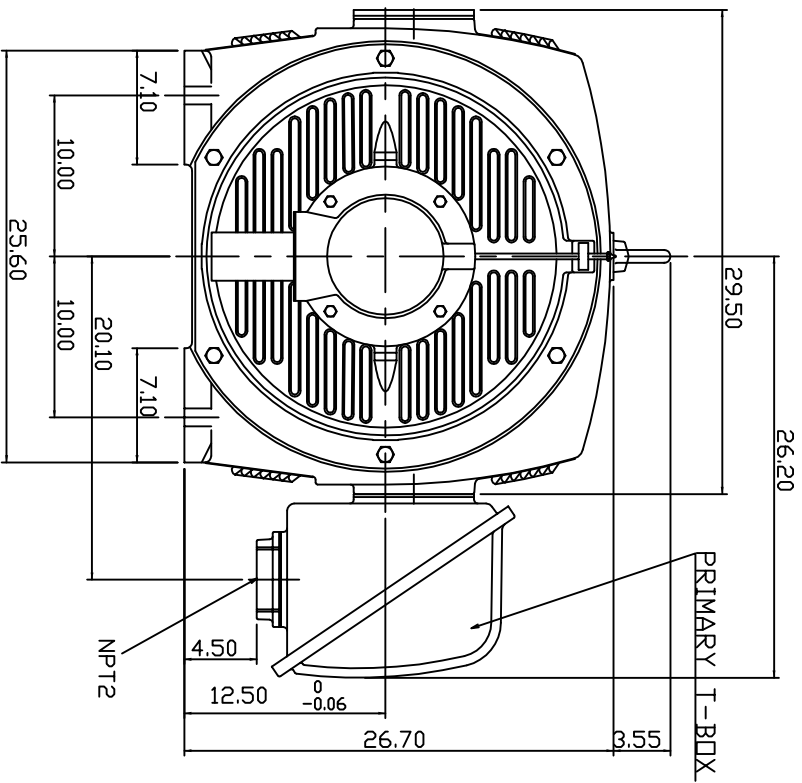


TYPE	OUTPUT		POLE	TIME RATING	VOLTAGE V	Hz	SYN SPEED R.P.M
	HP.	KW.					
ASHH	400	298.4	6	CDNT.	460	60	1200

DRIP PROOF TYPE, SQUIRREL-CAGE ROTOR



- NOTE:  
 1. DIMENSIONS IN INCH  
 2. FRAME NO. 5009B  
 3. F CLASS INSULATION  
 4. FOR DIRECT FLEXIBLE COUPLING  
 5. ENCLOSURE: IP22  
 6. BEARING SIZE: DPP, DRIVE END 6324  
 7. MOTOR APPROX. WEIGHT: 3835 LBS

TW-56C

DATE		OUTLINE DIMENSIONS	
DWN.	HCHEN	JUL. 05. 2010	3-PHASE INDUCTION MOTOR
CHKD.	W.W/ENG	JUL. 05. 2010	
APPD.	T.H/STAD	JUL. 05. 2010	
DATE		DATE	
JULY 9, 2010		JULY 9, 2010	
CATALOG NO.		CATALOG NO.	
DHP4006		DHP4006	
TECO Westinghouse		TECO Westinghouse	
DWG NO.		DWG NO.	
3A049DTA0013-9		3A049DTA0013-9	
REV: 00		REV: 00	