

DATE  
FEBRUARY 23, 2007  
CATALOG NO.  
DHP0156G

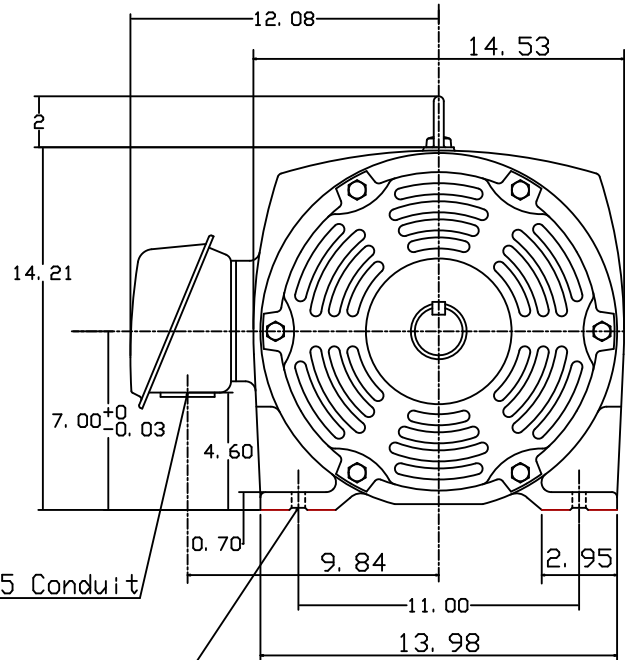
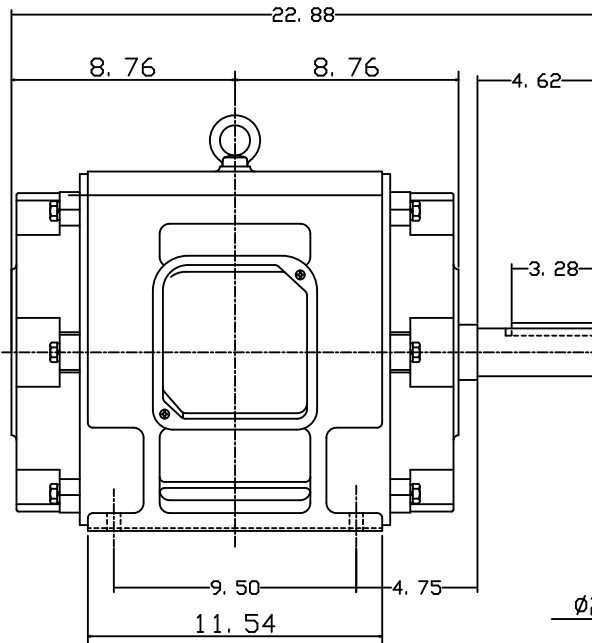
OUTLINE DIMENSIONS  
3-PHASE INDUCTION MOTOR

MOTOR TYPE:  
ASHH  
FRAME NO. 284T

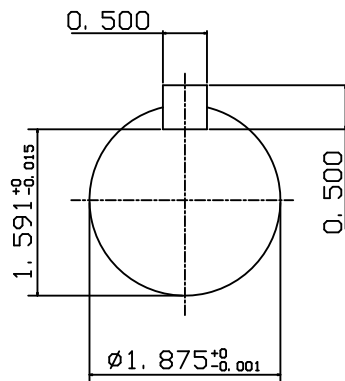
| Pole | HP | KW   | Hz | VOLT    | Syn. Speed<br>RPM |
|------|----|------|----|---------|-------------------|
| 6    | 15 | 11.2 | 60 | 230/460 | 1200              |

| Ins | Rating | Dimension in | Approx Weight | Bearings               |
|-----|--------|--------------|---------------|------------------------|
| F   | CONT.  | inch         | 357 lbs.      | DE: 6311ZZ NDE: 6310ZZ |

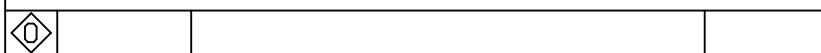
Open Protected Drip-Proof Type. Squirrel-cage Rotor.



ø2.05 Conduit  
4-ø0.53 Holes



NOTE:  
1. AEGIS Grounding ring installed on Drive-end.



|       |             |          |
|-------|-------------|----------|
| DWN.  | J. H. LIANG | 12-22-98 |
| CHKD. | C. H. KAO   | 06-10-99 |
| APPD. | Y. B. HUANG | 06-10-99 |

TECO Westinghouse

DWG NO.  
31057H386000