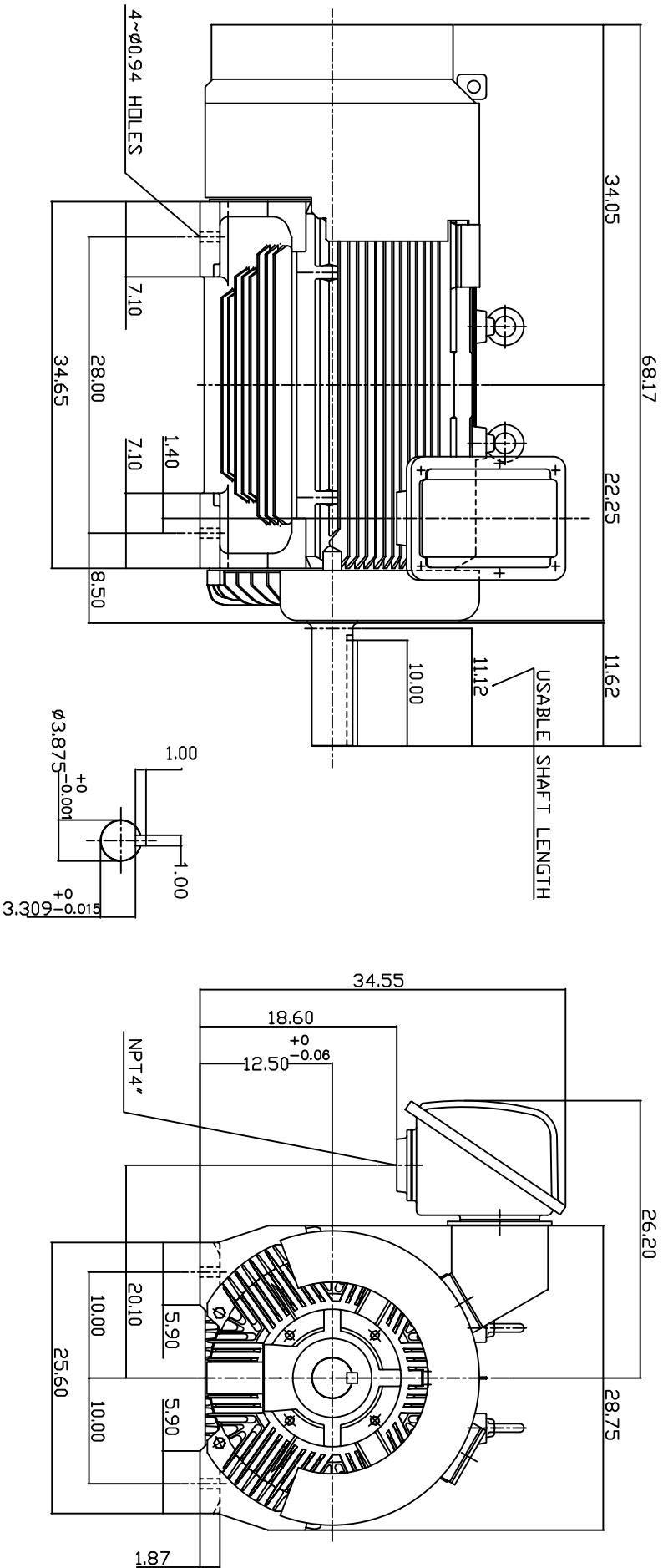


TYPE	OUTPUT	POLE	TIME RATING	VOLTAGE	Hz	SYN SPEED R.P.M
	HP.					
AECA	300/75	4/8	CDNT.	460	60	1800/900

TOTALLY ENCLOSED FAN-COOLED TYPE. SQUIRREL-CAGE ROTOR  
2 SPEED, 1 WINDING VARIABLE TORQUE



NOTE:

1. DIMENSIONS IN INCH.
2. FRAME NO. 5009B
3. F CLASS INSULATION, S.F.1.15
4. FOR DIRECT FLEXIBLE COUPLING
5. BEARING SIZE: DRIVE END: 6324  
NON-DRIVE END: 6320
6. MOTOR APPROX. WEIGHT: 4200 LBS
7. ENCLASURE: IP55

TV-56C

DWN.	W.LLIN	MAR-03-2003	Nov 15, 2006		OUTLINE DIMENSIONS 3-PHASE INDUCTION MOTOR
CHKD.	W.LLIN	MAR-03-2003	CAT. #: CP3004/8		
APPD.	C.WANG	MAR-03-2003			
				DWG NO.	3A040T179-2A
				REV:	00