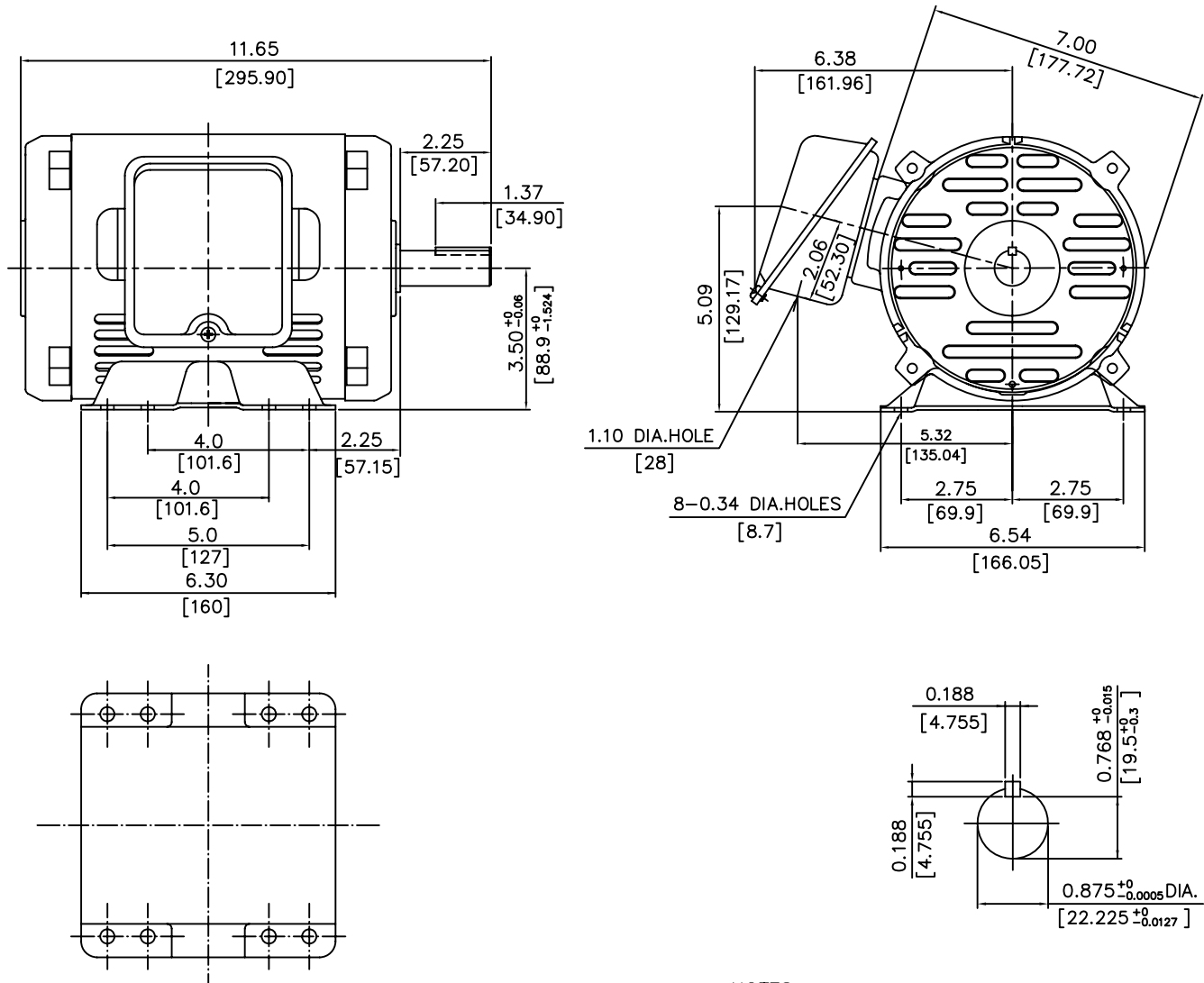


INDEX	SAS-003996
REV. LEVEL	0
SHEET	1 OF 1

TOSHIBA/HOUSTON

OPEN DRIP PROOF  
HORIZONTAL FOOT-MOUNTED

Fr. 143T-145T  
ROLLED STEEL FRAME



ALL DATA SUBJECT TO CHANGE WITHOUT NOTICE.  
FOR CONSTRUCTION USE ONLY CERTIFIED DATA.

#### NOTES:

- (1) DIMENSIONS ARE IN INCHES.
- (2) APPROXIMATE WEIGHT = 1.5HP, 2P, - 53 LBS.  
1HP, 4P, - 58.3 LBS.  
1.5HP, 4P - 61LBS.  
0.75HP, 6P, - 60 LBS.  
1HP, 6P - 61LBS.
- (3) DRIVE END BEARING 6205ZZ  
OPPOSITE DRIVE END BEARING 6205ZZ
- (4) INTERNAL VOLUME OF CONDUIT BOX = 30.2 CU. IN.

#### CERTIFIED DATA

CUSTOMER: \_\_\_\_\_ P.O. NO.: \_\_\_\_\_ TAG NO.: \_\_\_\_\_  
MOTOR MODEL NO.: **Y152DPNA21A-P** TOSHIBA FILE NO.: \_\_\_\_\_  
HP: **1.5** RPM (SYN.): **3600** VOLTAGE: **230/460** Hz: **60**  
FRAME SIZE: **143T** LOG NO.: \_\_\_\_\_ LOG REV. LEVEL: \_\_\_\_\_  
REMARKS: \_\_\_\_\_

PER: \_\_\_\_\_ ISSUE DATE: \_\_\_\_\_ SUPERSEDES: \_\_\_\_\_

# TOSHIBA

Reliability in Motion

## TOSHIBA INTERNATIONAL CORPORATION

INDUSTRIAL DIVISION

PO BOX 40906

HOUSTON TX 77240

(713) 466-0277

(800) 231-1412

FAX (713) 466-8773

### SPARE PARTS (RECOMMENDED)

OTHER THAN THE GREASE USED FOR RE-GREASABLE BEARINGS, **TOSHIBA** ADVISES THAT THERE ARE NO "USE" PARTS. THE ONLY INSURANCE SPARES THAT **TOSHIBA** SUGGESTS FOR THESE SQUIRREL CAGE INDUCTION MOTORS ARE INDUSTRY STANDARD, AND COMMERCIALY AVAILABLE ANTI-FRICTION BEARINGS, AS NOTED BELOW.

MOTOR COMPONENTS (SUCH AS TERMINAL BOXES, FAN COVERS, MACHINED PARTS) ARE AVAILABLE UPON SPECIAL REQUEST. IN THIS CASE, PLEASE ADVISE OUR ORDER ENTRY DEPARTMENT THE MODEL AND SERIAL NUMBERS (FOUND ON THE MOTOR NAMEPLATE) , AND A DESCRIPTION OF THE COMPONENT REQUIRED. THEY WILL THEN FURNISH THE CURRENT PART NUMBER, PRICE AND AVAILABILITY.

(NOTE: OUR INTERNAL PART NUMBERS ARE SUBJECT TO CHANGE WITHOUT NOTICE, AND ARE NOT PUBLISHED).

PLEASE ADVISE IF YOU HAVE ANY QUESTIONS.

CUSTOMER:

PURCHASE ORDER #

Customer Tag:

TOSHIBA FILE #

MODEL # Y152DPNA21A-P

HP / RPM / ENCL / FRAME: 1.5 / 3600 / ODP / 143T

DRIVE END BEARING: 6205ZZ

OPPOSITE DRIVE END BEARING: 6205ZZ

Prepared By:

Date: