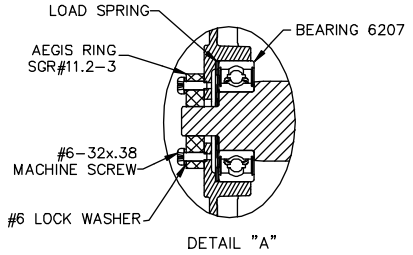


- NOTES:
1. CONDUIT BOX MAY BE ROTATED IN 90° INCREMENTS.
  2. MOTOR IS SUITABLE FOR FIELD CONVERSION FROM AN F1 TO AN F2 CONDUIT BOX LOCATION.
  3. MOTOR VENTILATION: AIR INTAKE THROUGH OPENINGS IN THE FACE OF EACH BRACKET AND EXHAUSTED THROUGH THE VENT SLOTS ON EACH END OF THE SHELL.

MOTOR DESCRIPTION:  
 3 PHASE OPEN DRIPPROOF STEEL SHELL 254T OR 256T MOUNTING.  
 OTHER MOUNTING ORIENTATIONS ARE ACCEPTABLE; HOWEVER WHEN MOUNTED OTHER THAN HORIZONTAL; MOTOR WILL NOT BE DRIPPROOF AS DEFINED BY NEMA.



		TOLERANCES UNLESS SPECIFIED			DRAWN UD 07/26/13
		DEC.	INCHES		CHK SR 07/26/13
		.X	±0.1		APPD
		.XX	±0.02		SCALE NTS
		.XXX	±0.005	TITLE OUTLINE - SGR	REF 18748501-001
		.XXXX	±0.0005	MAT'L.	FMF
NO.	REVISION	BY & DATE	CHK ANG ±1	FINISH	PREV
THIS DRAWING IN DESIGN AND DETAIL IS OUR PROPERTY AND MUST NOT BE USED EXCEPT IN CONNECTION WITH OUR WORK ALL RIGHTS OF DESIGN AND INVENTION ARE RESERVED THIS IS AN ELECTRONICALLY GENERATED DOCUMENT - DO NOT SCALE THIS PRINT				RFP CAD FILE 610-0002	SIZE B
				DIST	DRAWING NO. 610-0002
					REV. 610-0002