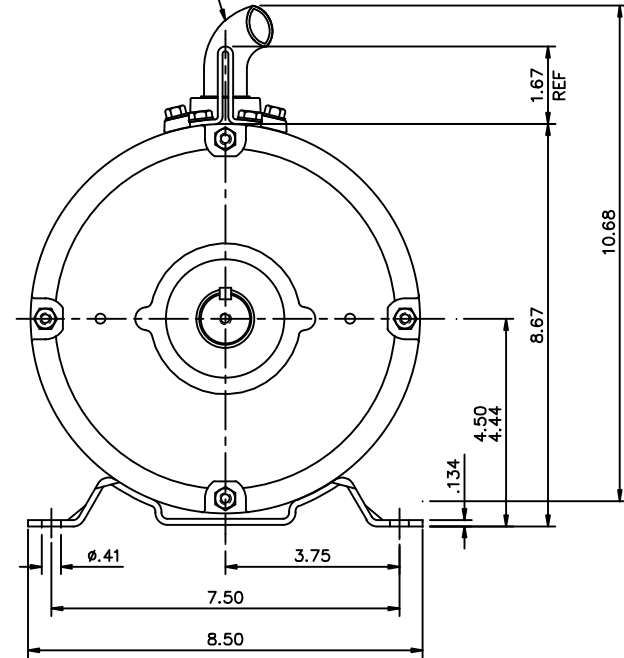
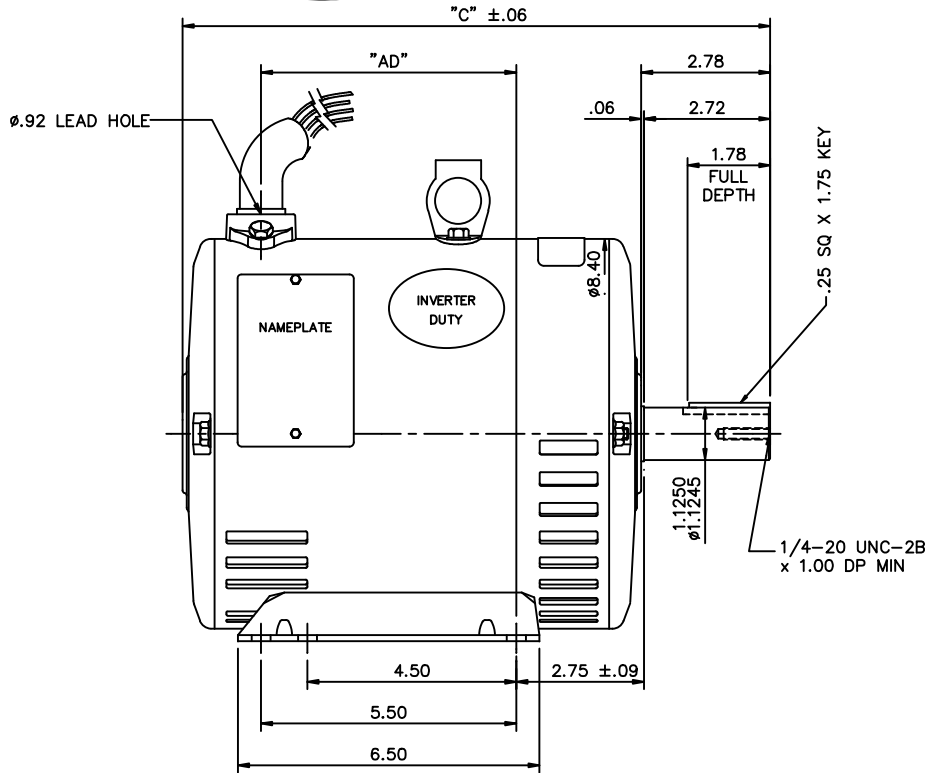


CONNECTOR TO BE LOCATED 30° OFF SHAFT AXIS TOWARD SHAFT END AS SHOWN



DASH NO.	"C"	"AD"
800	12.16	5.00
850	12.66	5.50
900	13.16	6.00
950	13.66	6.50
1000	14.16	7.00
1050	14.66	7.50
1100	15.16	8.00
1150	15.66	8.50

NO.		REVISION	BY & DATE	CHK	ANG	±1/2'	FINISH	RFP		CAD FILE		035790	SIZE	DRAWING NO.	REV.
<p>THIS DRAWING IN DESIGN AND DETAIL IS OUR PROPERTY AND MUST NOT BE USED EXCEPT IN CONNECTION WITH OUR WORK ALL RIGHTS OF DESIGN AND INVENTION ARE RESERVED THIS IS AN ELECTRONICALLY GENERATED DOCUMENT - DO NOT SCALE THIS PRINT</p>															
				TOLERANCES UNLESS SPECIFIED		DEC. INCHES		MARATHON ELECTRIC		DRAWN		JD 05/12/2011		CHK	
				.X ±.1		TITLE		OUTLINE - 180T FRAME		APPD		SCALE		3=8	
				.XX ±.03		DRIP PROOF - RIGID		REF		035639		FMF		184TTDW7611	
				.XXX ±.005		MAT'L		PREV							
				.XXXX ±.0005											
				RFP											
				DIST											