

DATA SHEET



Three Phase Induction Motor - Squirrel Cage

Customer : Dealers Industrial Equipment 800-469-3110
Customer reference : 06018OT3E364T-W40G

Product line : W40 NEMA Premium Efficiency Three-Phase Product code : 14285128
Catalog # : 06018OT3E364T-W40G

Frame	: 364/5T	Locked rotor time	: 34s (cold) 19s (hot)
Output	: 60 HP (45 kW)	Temperature rise	: 80 K
Poles	: 4	Duty cycle	: Cont.(S1)
Frequency	: 60 Hz	Ambient temperature	: -20°C to +40°C
Rated voltage	: 208-230/460 V	Altitude	: 1000 m.a.s.l.
Rated current	: 155-140/69.9 A	Protection degree	: IP23
L. R. Amperes	: 1005-909/454 A	Cooling method	: IC01 - ODP
LRC	: 6.5x(Code G)	Mounting	: F-1
No load current	: 42.6-49.4/24.7 A	Rotation ¹	: Both (CW and CCW)
Rated speed	: 1780 rpm	Noise level ²	: 69.0 dB(A)
Slip	: 1.11 %	Starting method	: Direct On Line
Rated torque	: 175 ft.lb	Approx. weight ³	: 746 lb
Locked rotor torque	: 200 %		
Breakdown torque	: 240 %		
Insulation class	: F		
Service factor	: 1.25		
Moment of inertia (J)	: 15.6 sq.ft.lb		
Design	: B		

Output	25%	50%	75%	100%	Foundation loads	
Efficiency (%)	94.4	94.5	95.0	95.0	Max. traction	: 1263 lb
Power Factor	0.48	0.73	0.82	0.85	Max. compression	: 2009 lb

		<u>Drive end</u>	<u>Non drive end</u>
Bearing type	:	6314 C3	6212 Z C3
Sealing	:	Without Bearing Seal	Without Bearing Seal
Lubrication interval	:	20000 h	20000 h
Lubricant amount	:	27 g	13 g
Lubricant type	:	Mobil Polyrex EM	

Notes
downloaded from <http://dealerselectric.com>

This revision replaces and cancel the previous one, which must be eliminated.
(1) Looking the motor from the shaft end.
(2) Measured at 1m and with tolerance of +3dB(A).
(3) Approximate weight subject to changes after manufacturing process.
(4) At 100% of full load.

These are average values based on tests with sinusoidal power supply, subject to the tolerances stipulated in NEMA MG-1.

Rev.	Changes Summary	Performed	Checked	Date
Performed by		Page 1 / 2 Revision		
Checked by				
Date	14/04/2019			

LOAD PERFORMANCE CURVE

Three Phase Induction Motor - Squirrel Cage

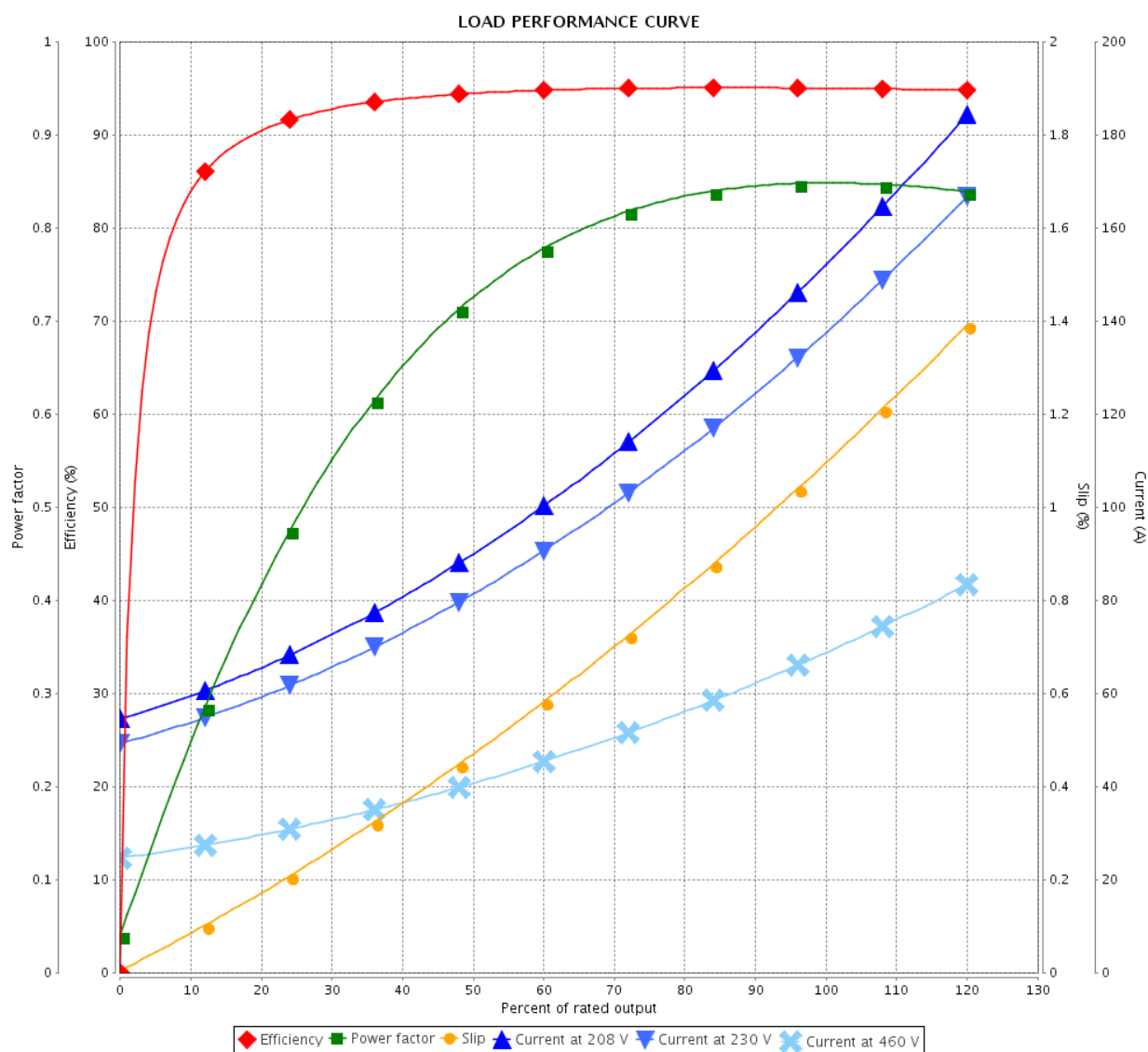


Customer : Dealers Industrial Equipment 800-469-3110
Customer reference : 06018OT3E364T-W40G

Product line : W40 NEMA Premium Efficiency
Three-Phase

Product code : 14285128

Catalog # : 06018OT3E364T-W40G

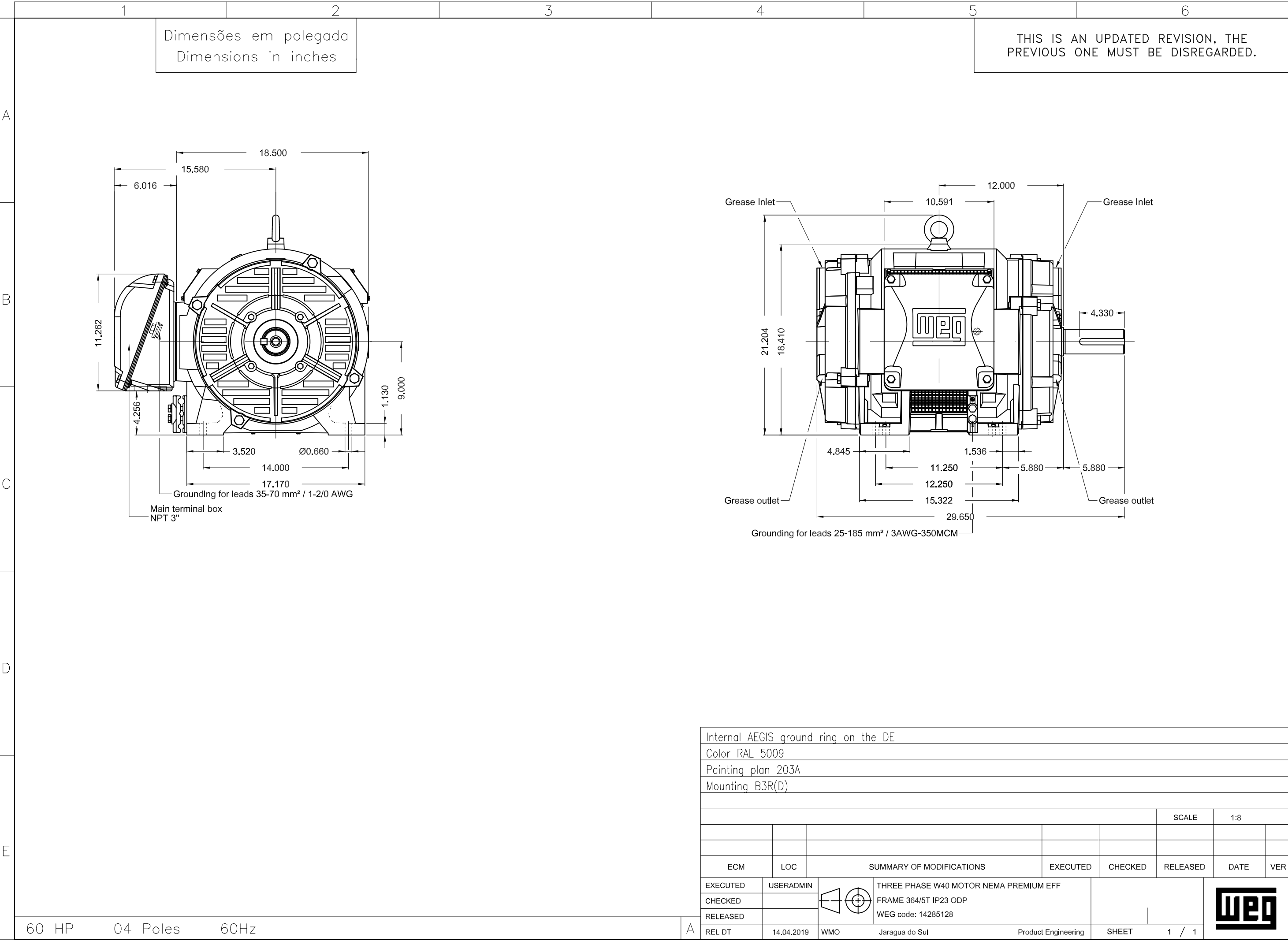


Performance : 208-230/460 V 60 Hz 4P

Rated current : 155-140/69.9 A
LRC : 6.5
Rated torque : 175 ft.lb
Locked rotor torque : 200 %
Breakdown torque : 240 %
Rated speed : 1780 rpm

Moment of inertia (J) : 15.6 sq.ft.lb
Duty cycle : Cont.(S1)
Insulation class : F
Service factor : 1.25
Temperature rise : 80 K
Design : B

Rev.	Changes Summary		Performed	Checked	Date
Performed by				Page	Revision
Checked by				2 / 2	
Date					



MODEL 060180T3E364T-W40G

MADE IN BRAZIL

14285128


W40 NEMA
CC029A Premium

Inverter Duty Motor

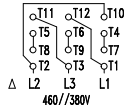
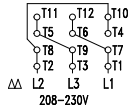

 3PT9
 LISTED

IEC 60034-1


 C US
 Energy Verified

For 60Hz use on PWM, VT 1000:1, CT 2:1, 1.0SF

PH 3	FR 364/5T	HP(kW) 60.0(45.0)	Hz 60
V 230/460	A 140/69.9	RPM 1780	DES B
NEMA NOM EFF 95.0 %	INS. CL. F Δ T 80 K	IP23	
ENCL ODP	DUTY CONT.	AMB. 40°C	
CODE G	PF 0.85	SF 1.25	SFA 175/87.4
USABLE @208V 155 A	SF 1.15	SFA 178	
37kW 50Hz 380V 69.6A 1480RPM SF1.00 EFF 93.9% (IE3)			


 → 6314-C3 (27g)
 → 6212-Z-C3 (13g)

 MOBIL POLYREX EM
 20000 h

ALT 1000 m.a.s.l. 745 Lbs