

DATA SHEET



Three Phase Induction Motor - Squirrel Cage

Customer : Dealers Industrial Equipment 800-469-3110		Customer reference : 02536OP3VFP256JMV-S				
Product line : Rolled Steel JM Pump High Efficiency Three-Phase		Product code : 13550956	Catalog # : 02536OP3VFP256JMV-S			
Frame : 254/6JM Output : 25 HP (18.5 kW) Poles : 2 Frequency : 60 Hz Rated voltage : 200/400 V Rated current : 66.7/33.3 A L. R. Amperes : 414/207 A LRC : 6.2x(Code G) No load current : 25.7/12.9 A Rated speed : 3530 rpm Slip : 1.94 % Rated torque : 36.7 ft.lb Locked rotor torque : 180 % Breakdown torque : 280 % Insulation class : F Service factor : 1.15 Moment of inertia (J) : 0.8718 sq.ft.lb Design : B	Locked rotor time : 16s (cold) 9s (hot) Temperature rise : 80 K Duty cycle : Cont.(S1) Ambient temperature : -20°C to +40°C Altitude : 1000 m.a.s.l. Cooling method : IC01 - ODP Mounting : W-6 Rotation ¹ : Both (CW and CCW) Noise level ² : 70.0 dB(A) Starting method : Direct On Line Approx. weight ³ : 182 lb					
Output	25%	50%	75%	100%	Foundation loads	
Efficiency (%)	90.0	90.2	91.0	91.0	Max. traction	: 408 lb
Power Factor	0.48	0.75	0.84	0.88	Max. compression	: 590 lb
		<u>Drive end</u>		<u>Non drive end</u>		
Bearing type	:	6309 Z C3		6208 Z C3		
Sealing	:	Without Bearing Seal		Without Bearing Seal		
Lubrication interval	:	15797 h		20000 h		
Lubricant amount	:	13 g		8 g		
Lubricant type	:	Mobil Polyrex EM				
Notes downloaded from http://dealerselectric.com						
This revision replaces and cancel the previous one, which must be eliminated. (1) Looking the motor from the shaft end. (2) Measured at 1m and with tolerance of +3dB(A). (3) Approximate weight subject to changes after manufacturing process. (4) At 100% of full load.				These are average values based on tests with sinusoidal power supply, subject to the tolerances stipulated in NEMA MG-1.		
Rev.	Changes Summary			Performed	Checked	Date
Performed by						
Checked by					Page	Revision
Date	14/04/2019				1 / 2	

LOAD PERFORMANCE CURVE



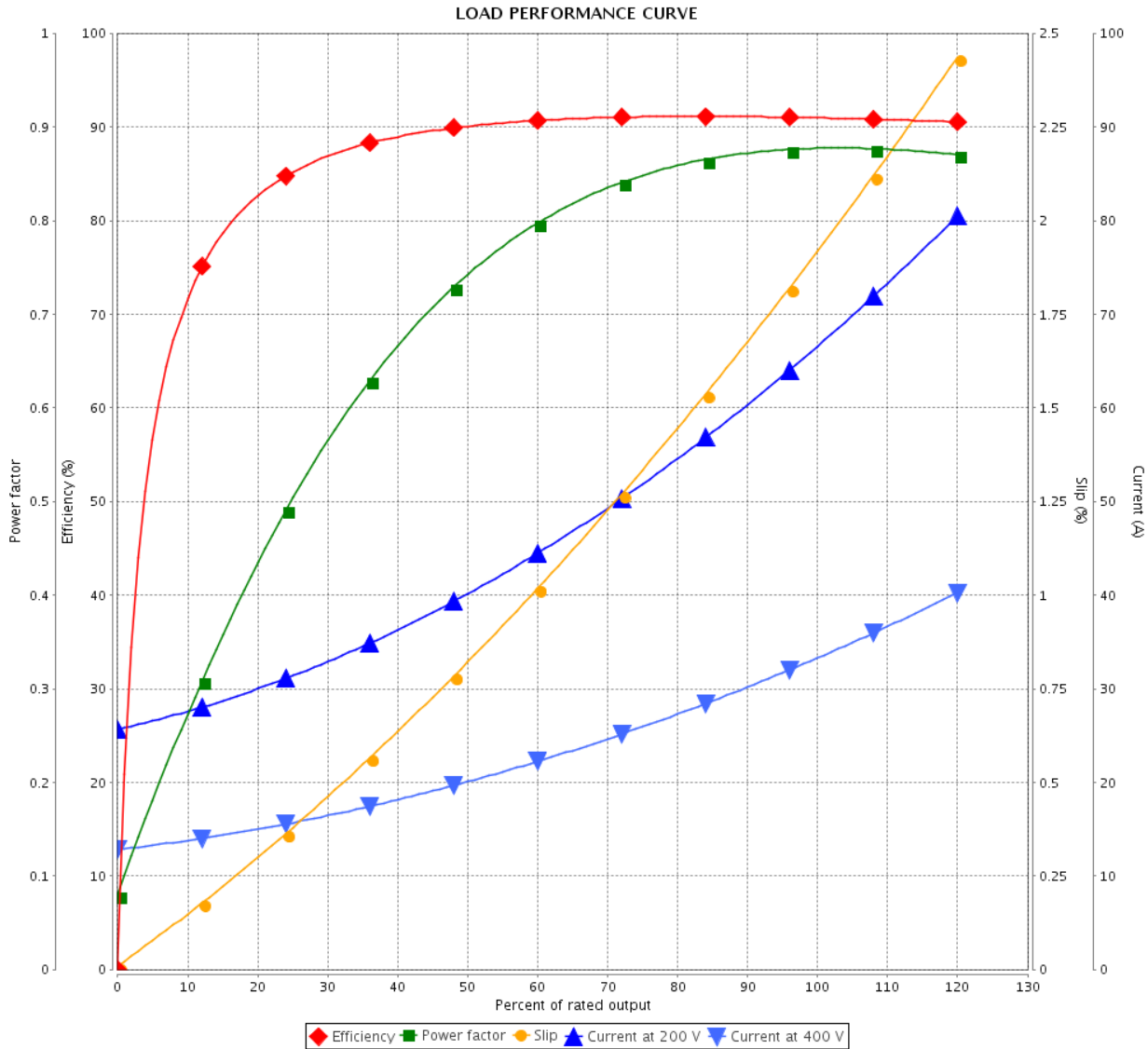
Three Phase Induction Motor - Squirrel Cage

Customer : Dealers Industrial Equipment 800-469-3110
 Customer reference : 02536OP3VFP256JMV-S

Product line : Rolled Steel JM Pump High Efficiency Three-Phase

Product code : 13550956

Catalog # : 02536OP3VFP256JMV-S



Performance : 200/400 V 60 Hz 2P

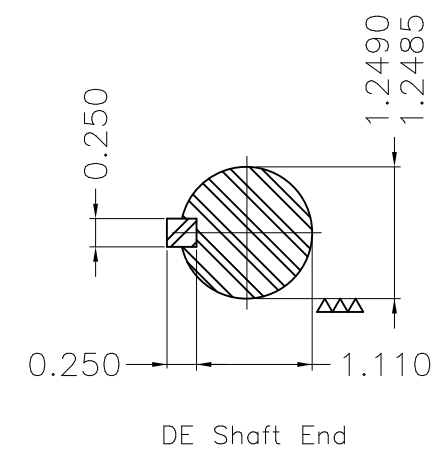
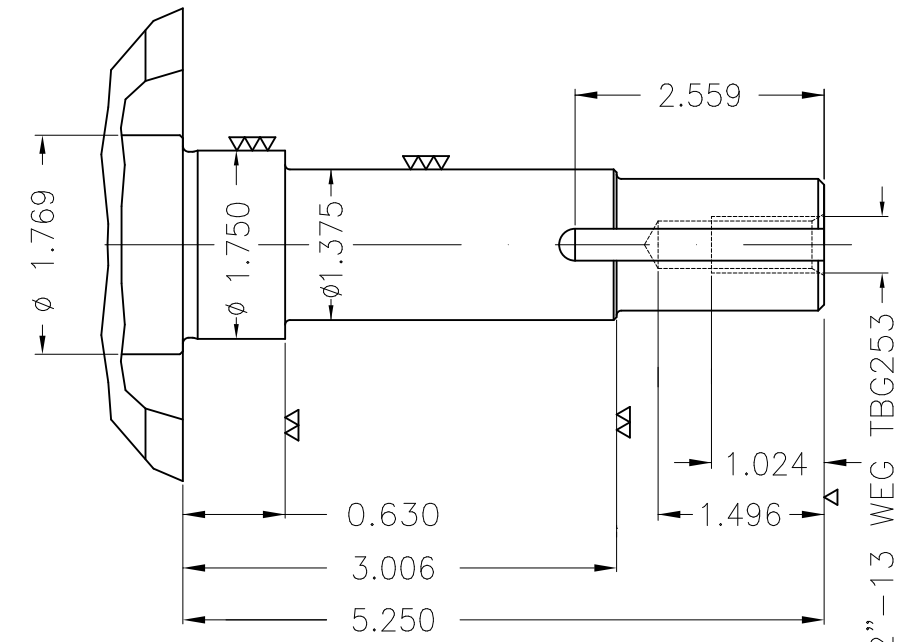
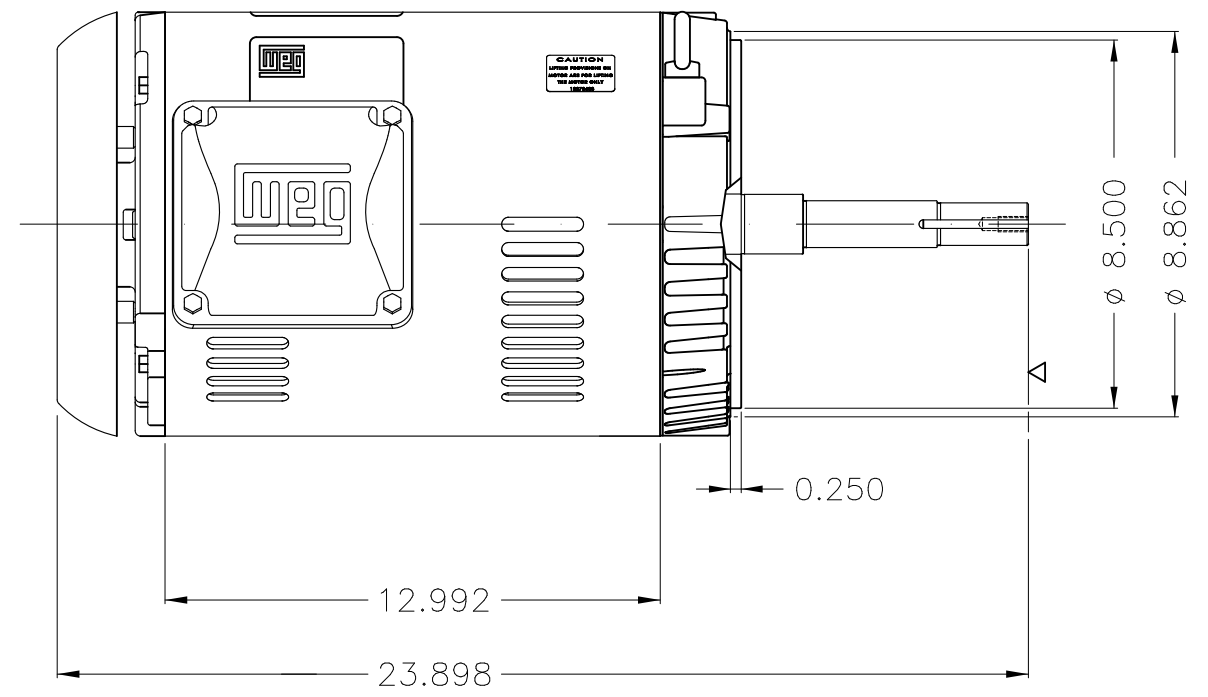
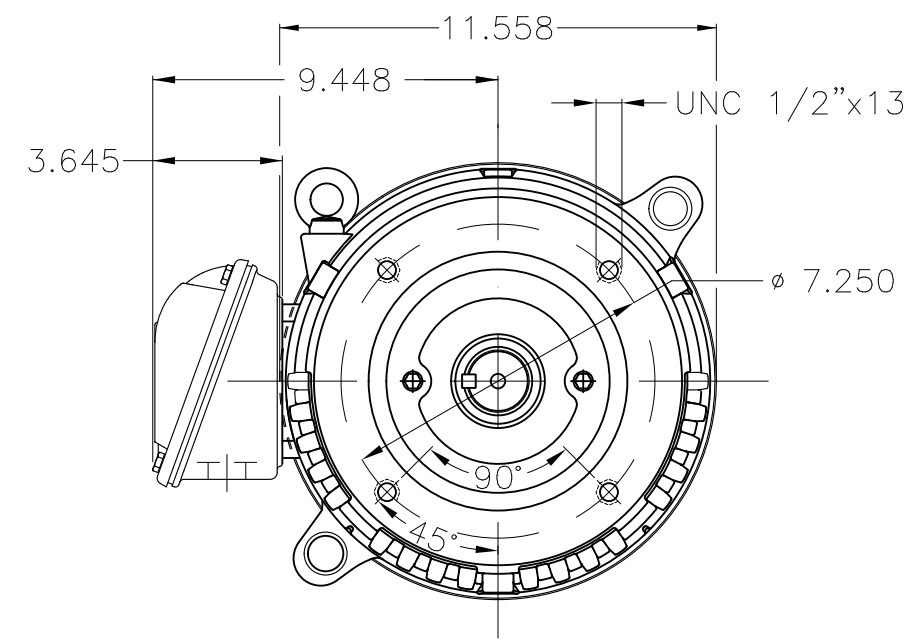
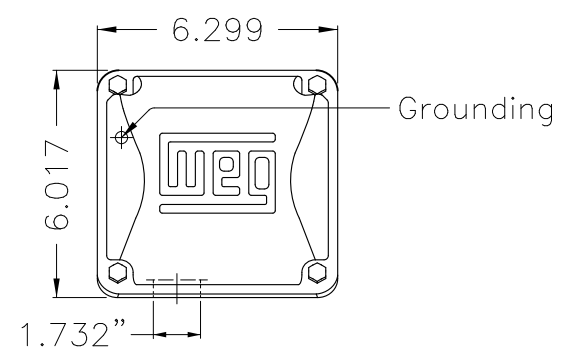
Rated current : 66.7/33.3 A
 LRC : 6.2
 Rated torque : 36.7 ft.lb
 Locked rotor torque : 180 %
 Breakdown torque : 280 %
 Rated speed : 3530 rpm

Moment of inertia (J) : 0.8718 sq.ft.lb
 Duty cycle : Cont.(S1)
 Insulation class : F
 Service factor : 1.15
 Temperature rise : 80 K
 Design : B

Rev.	Changes Summary	Performed	Checked	Date
Performed by			Page 2 / 2	Revision
Checked by				
Date	14/04/2019			

Dimensões em polegada
Dimensions in inches

THIS IS AN UPDATED REVISION, THE
PREVIOUS ONE MUST BE DISREGARDED.



Color RAL 3002
Painting plan 207N
Mounting W-6/V18R(D)

ECM	LOC	SUMMARY OF MODIFICATIONS	EXECUTED	CHECKED	RELEASED	DATE	VER
EXECUTED	USERADMIN	THREE P. MOTOR OPEN ROLLED STEEL HIGH EFF					
CHECKED		FRAME 254/6JM ODP					
RELEASED		CLOSE COUPLED PUMP JM TYPE W					
REL DT	14.04.2019	WMO Jaragua do Sul	Product Engineering	SHEET	1 / 1		

25 HP 02 Poles 60Hz

A





MADE IN MEXICO

MAT:13550956 CC029A

W01.T00IC0X0H

**MODEL 02536OP3VFP256JMV-S
25FEV2019 S/N:**

PH 3 FR 254/6JM |HP(kw) 25(18.5) Hz 60

V 200/400 RPM 3530

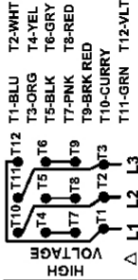
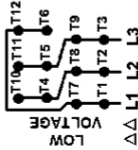
A 66.7/33.3 DUTY CONT.

SFA 76.7/38.3 CODE G DES B

SF 1.15 INS CL F Δ T 80K AMB 40°C ENCL ODP

ALT 1000 m.a.s.l. NEMA NOM.EFF. 91.0% PF 0.88

ALTERNATE RATING:



INTERCHANGE ANY TWO LINE WIRES TO REVERSE THE ROTATION

Inverter duty For use on VPWM 1000:1 VT, 2:1 CT

DE: 6309-Z-C3 ODE: 6208-Z-C3 MOBIL POLYREX EM 15797h

WARNING: Motor must be grounded in accordance with local and national electrical codes to prevent serious electrical shocks. Disconnect power source before servicing unit.

AVERTISSEMENT: Le moteur doit être mis à la terre conformément aux codes électriques locaux et nationaux afin d'éviter tout choc électrique grave. Déconnectez l'alimentation avant l'entretien de la machine.

