

# DATA SHEET



## Three Phase Induction Motor - Squirrel Cage

Customer	: Dealers Industrial Equipment 800-469-3110				
Customer reference	: 05030EP3OFP326TS-W22				
Product line	: W22 High Efficiency Three-Phase		Product code :	12420471	
			Catalog # :	05030EP3OFP326TS-W22	
Frame	: 324/6TS		Locked rotor time	: 37s (cold) 21s (hot)	
Output	: 50 HP (37 kW)		Temperature rise	: 80 K	
Poles	: 2		Duty cycle	: Cont.(S1)	
Frequency	: 50 Hz		Ambient temperature	: -20°C to +40°C	
Rated voltage	: 380 V		Altitude	: 1000 m.a.s.l.	
Rated current	: 68.3 A		Protection degree	: IP55	
L. R. Amperes	: 396 A		Cooling method	: IC411 - TEFC	
LRC	: 5.8x(Code F)		Mounting	: F-1	
No load current	: 16.6 A		Rotation <sup>1</sup>	: Both (CW and CCW)	
Rated speed	: 2950 rpm		Noise level <sup>2</sup>	: 74.0 dB(A)	
Slip	: 1.67 %		Starting method	: Direct On Line	
Rated torque	: 87.8 ft.lb		Approx. weight <sup>3</sup>	: 553 lb	
Locked rotor torque	: 200 %				
Breakdown torque	: 210 %				
Insulation class	: F				
Service factor	: 1.15				
Moment of inertia (J)	: B				
Design					
Output	25%	50%	75%	100%	
Efficiency (%)	90.9	91.5	92.0	92.5	
Power Factor	0.61	0.84	0.88	0.89	
	Foundation loads				
	Max. traction : 563 lb				
	Max. compression : 1116 lb				
		<u>Drive end</u>		<u>Non drive end</u>	
Bearing type	:	6312 C3		6212 C3	
Sealing	:	V'Ring		V'Ring	
Lubrication interval	:	15000 h		18000 h	
Lubricant amount	:	21 g		13 g	
Lubricant type	:	Mobil Polyrex EM			
Notes downloaded from <a href="http://dealerselectric.com">http://dealerselectric.com</a>					
This revision replaces and cancel the previous one, which must be eliminated. (1) Looking the motor from the shaft end. (2) Measured at 1m and with tolerance of +3dB(A). (3) Approximate weight subject to changes after manufacturing process. (4) At 100% of full load.			These are average values based on tests with sinusoidal power supply, subject to the tolerances stipulated in NEMA MG-1.		
Rev.	Changes Summary		Performed	Checked	Date
Performed by					
Checked by				Page	Revision
Date	14/04/2019			1 / 2	

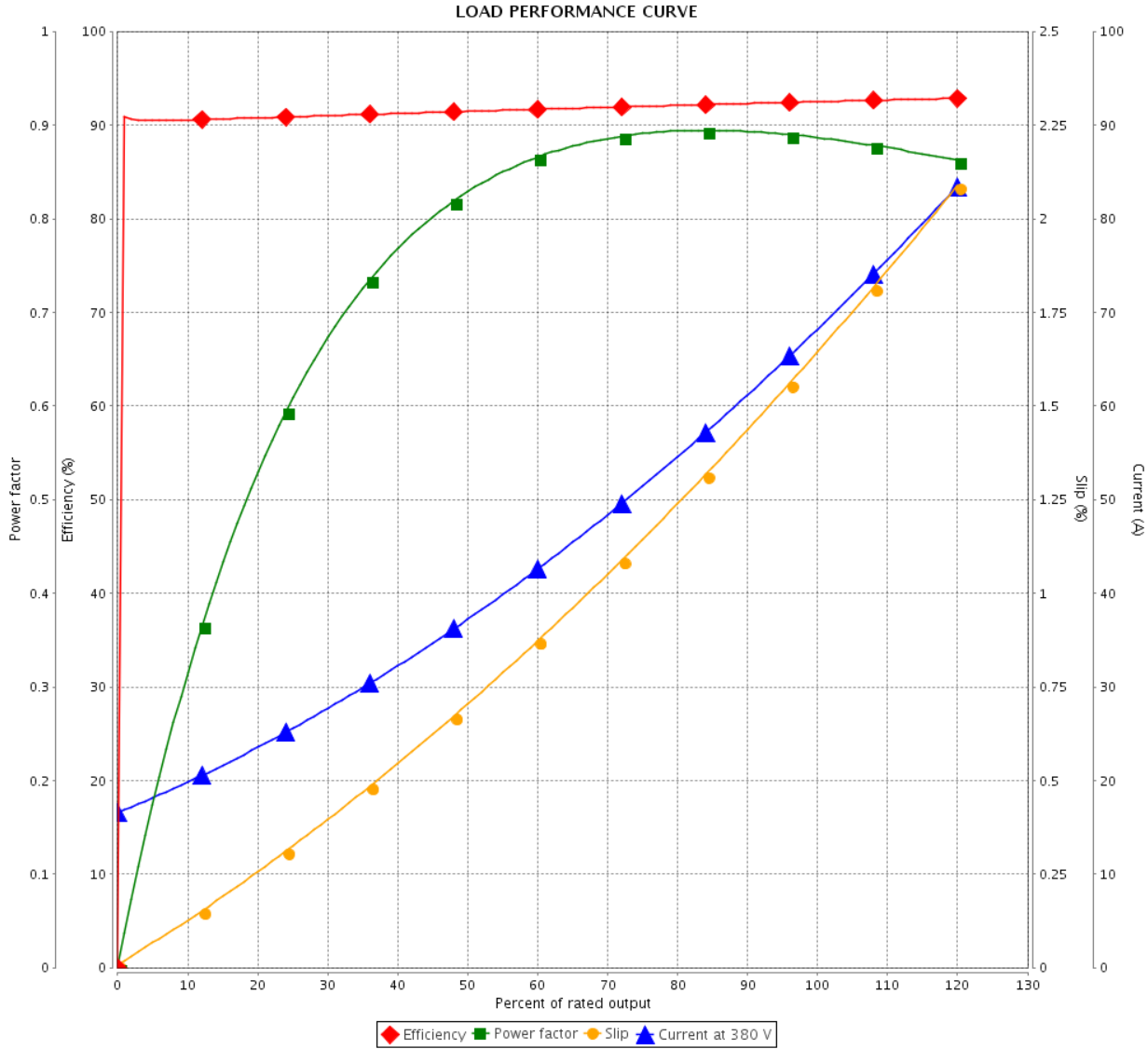
# LOAD PERFORMANCE CURVE



## Three Phase Induction Motor - Squirrel Cage

Customer : Dealers Industrial Equipment 800-469-3110  
 Customer reference : 05030EP3OFP326TS-W22

Product line : W22 High Efficiency Three-Phase      Product code : 12420471  
 Catalog # : 05030EP3OFP326TS-W22



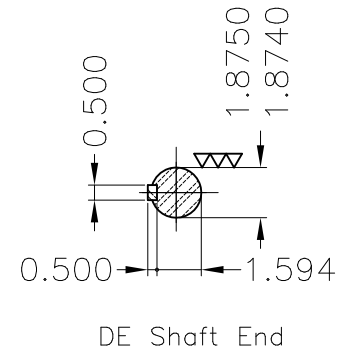
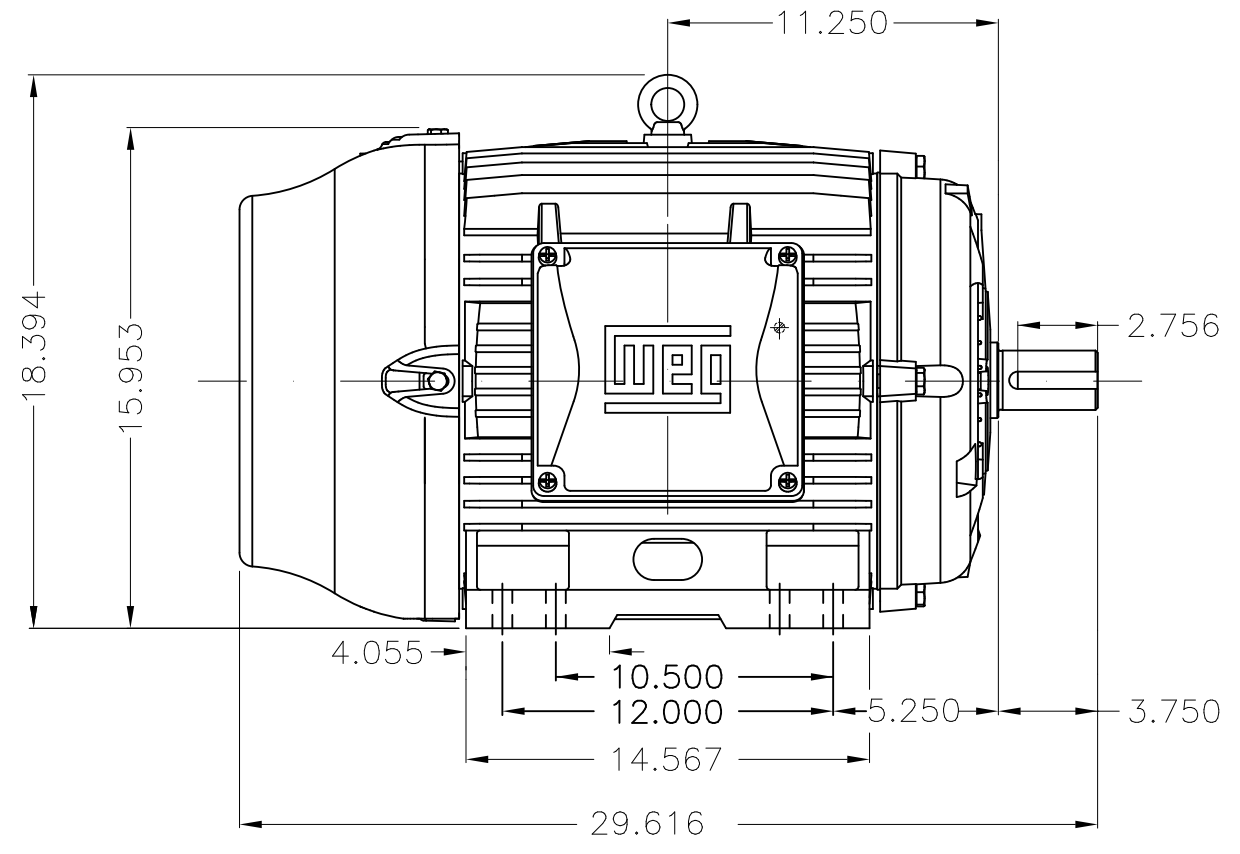
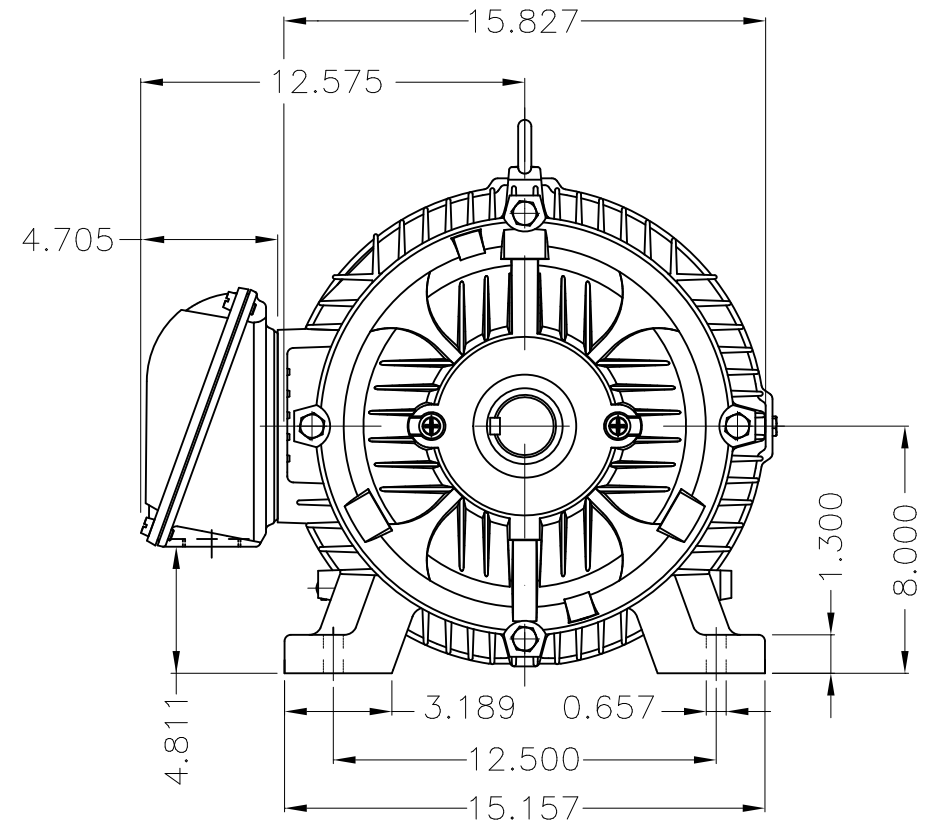
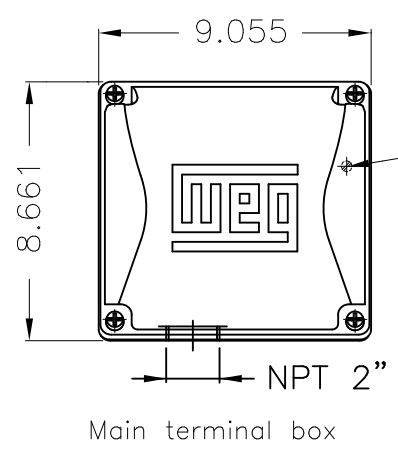
Performance : 380 V 50 Hz 2P

Rated current : 68.3 A	Moment of inertia (J)
LRC : 5.8	Duty cycle : Cont.(S1)
Rated torque : 87.8 ft.lb	Insulation class : F
Locked rotor torque : 200 %	Service factor : 1.15
Breakdown torque : 210 %	Temperature rise : 80 K
Rated speed : 2950 rpm	Design : B

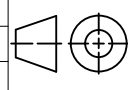
Rev.	Changes Summary	Performed	Checked	Date
Performed by			Page 2 / 2	Revision
Checked by				
Date	14/04/2019			

Dimensões em polegada  
Dimensions in inches

THIS IS AN UPDATED REVISION, THE  
PREVIOUS ONE MUST BE DISREGARDED.



Type test without inspector - 1 motor/lot  
Color RAL 5009  
Painting plan 203A  
Mounting B3R(D)

ECM	LOC	SUMMARY OF MODIFICATIONS	EXECUTED	CHECKED	RELEASED	DATE	VER
EXECUTED	USERADMIN	 THREE PHASE W22 MOTOR - HIGH EFF FRAME 324/6TS IP55 TEFC WEG code: 12420471					
CHECKED							
RELEASED							
REL DT	14.04.2019		WMO Jaragua do Sul	Product Engineering	SHEET	1 / 1	

50 HP 02 Poles 50 Hz



MODEL 05030EP30FP326TS-W22  
MADE IN MEXICO  
12420471

**WEG** **W22**  
**CC029A**

*Severe Duty*

MOD.TE1BFOX0



PH 3	FR 324/6TS	HP(kW) 50(37)	Hz 50		
V 380-400-415		AMB. 40°C	CODE H	DES B	
A 68.3-65.4-63.0			IP55		
RPM 2950-2955-2960			SF 1.15		
PF 0.89-0.88-0.88		INS. CL. F $\Delta T$ 80 K			
NEMA NOM EFF 92.5		% DUTY CONT.			
SFA 78.5-75.2-72.4			ENCL TEFC	ALT 1000 m.a.s.l.	553 Lbs



→ 6312-C3  
→ 6212-C3

MOBIL POLYREX EM  
21 g 15000 h