

DATA SHEET



Three Phase Induction Motor - Squirrel Cage

Customer : Dealers Industrial Equipment 800-469-3110		Customer reference : 25030EP3OFP449TS-W22			
Product line : W22 High Efficiency Three-Phase		Product code : 12345066 Catalog # : 25030EP3OFP449TS-W22			
Frame : 447/9TS Output : 250 HP (185 kW) Poles : 2 Frequency : 50 Hz Rated voltage : 380 V Rated current : 325 A L. R. Amperes : 1918 A LRC : 5.9x(Code F) No load current : 62.4 A Rated speed : 2965 rpm Slip : 1.17 % Rated torque : 437 ft.lb Locked rotor torque : 170 % Breakdown torque : 229 % Insulation class : F Service factor : 1.15 Moment of inertia (J) : B Design :		Locked rotor time : 45s (cold) 25s (hot) Temperature rise : 80 K Duty cycle : Cont.(S1) Ambient temperature : -20°C to +40°C Altitude : 1000 m.a.s.l. Protection degree : IP55 Cooling method : IC411 - TEFC Mounting : F-1 Rotation ¹ : Both (CW and CCW) Noise level ² : 79.0 dB(A) Starting method : Direct On Line Approx. weight ³ : 2535 lb			
Output	25%	50%	75%	100%	Foundation loads Max. traction : 1988 lb Max. compression : 4522 lb
Efficiency (%)	94.0	94.4	94.7	95.0	
Power Factor	0.67	0.87	0.90	0.91	
		<u>Drive end</u> Bearing type : 6314 C3 Sealing : WSeal Lubrication interval : 5000 h Lubricant amount : 27 g Lubricant type : Mobil Polyrex EM		<u>Non drive end</u> 6314 C3 WSeal 5000 h 27 g	
Notes downloaded from http://dealerselectric.com					
This revision replaces and cancel the previous one, which must be eliminated. (1) Looking the motor from the shaft end. (2) Measured at 1m and with tolerance of +3dB(A). (3) Approximate weight subject to changes after manufacturing process. (4) At 100% of full load.			These are average values based on tests with sinusoidal power supply, subject to the tolerances stipulated in NEMA MG-1.		
Rev.	Changes Summary		Performed	Checked	Date
Performed by					
Checked by					
Date	16/04/2019			Page 1 / 2	Revision

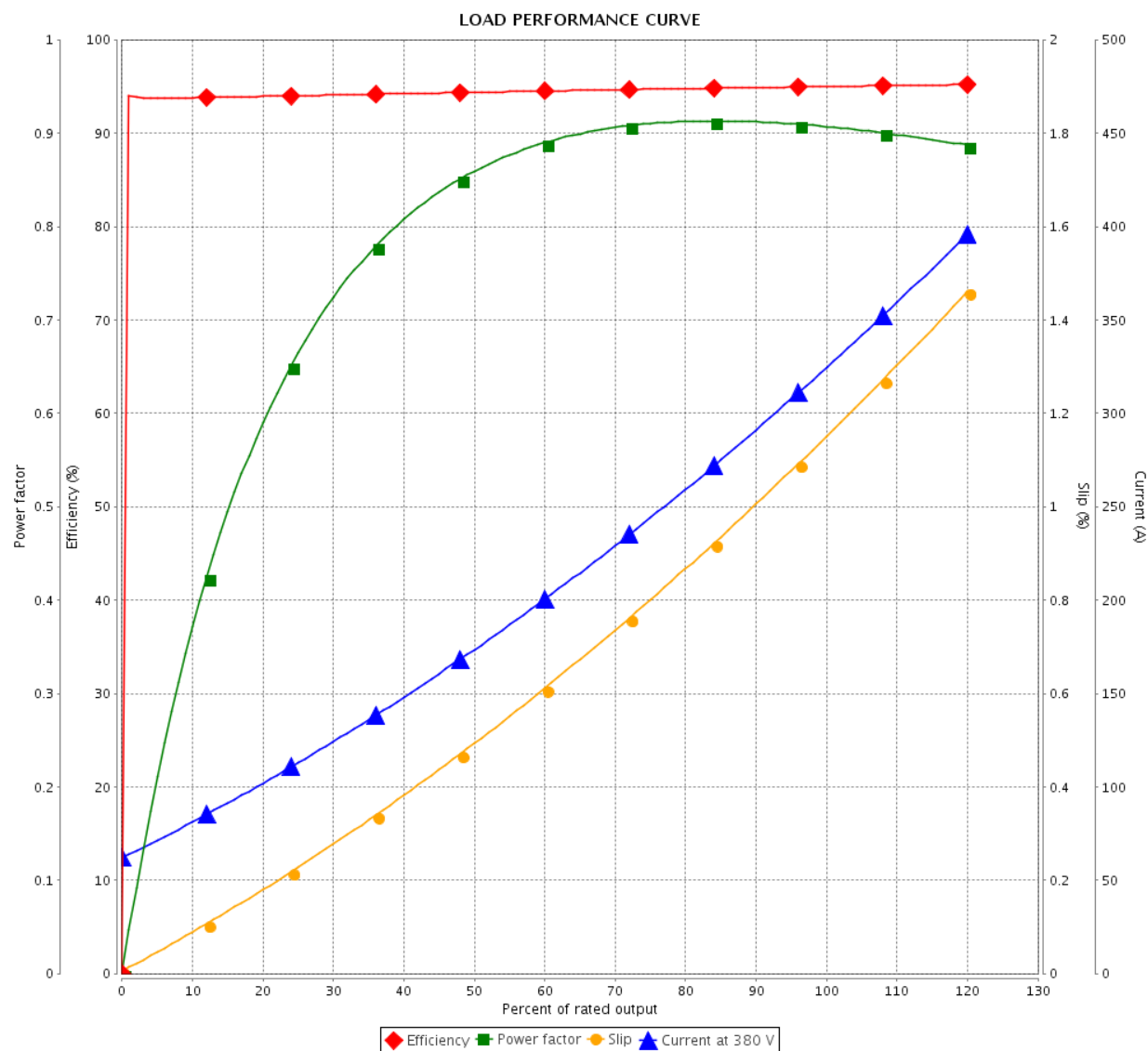
LOAD PERFORMANCE CURVE

Three Phase Induction Motor - Squirrel Cage



Customer : Dealers Industrial Equipment 800-469-3110
Customer reference : 25030EP3OFP449TS-W22

Product line : W22 High Efficiency Three-Phase Product code : 12345066
Catalog # : 25030EP3OFP449TS-W22

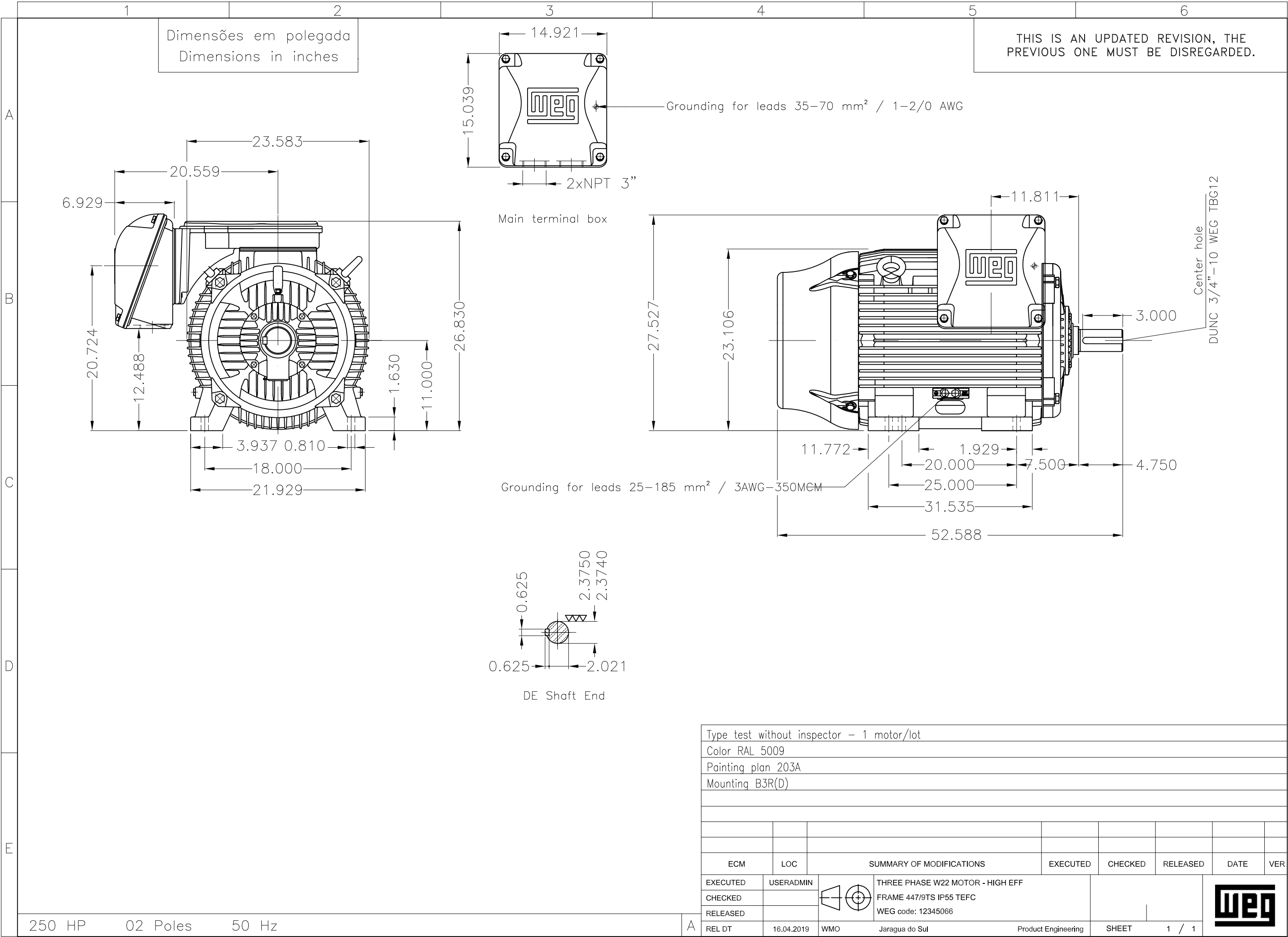


Performance : 380 V 50 Hz 2P

Rated current : 325 A
LRC : 5.9
Rated torque : 437 ft.lb
Locked rotor torque : 170 %
Breakdown torque : 229 %
Rated speed : 2965 rpm

Moment of inertia (J)
Duty cycle : Cont.(S1)
Insulation class : F
Service factor : 1.15
Temperature rise : 80 K
Design : B

Rev.	Changes Summary	Performed	Checked	Date
Performed by		Page 2 / 2Revision		
Checked by				
Date	16/04/2019			



MODEL: 25030EP30FP449TS-W22


MADE IN MEXICO

12345066


W22
CC029A


MOD.TE1BFOX0H

*Severe Duty*

PH 3	FR 447/9TS	HP(kW) 250(185)			Hz 50		<div><div><div><div>T6</div><div>T1</div><div>L1</div></div><div><div>T4</div><div>T2</div><div>L2</div></div><div><div>T5</div><div>T3</div><div>L3</div></div></div><div><div>Δ</div><div>380-400-415V</div></div></div>		
V 380-400-415		AMB. 40°C		CODE H	DES B				
A 325-307-296					IP55				
RPM 2965-2970-2970				SF 1.15					
PF 0.91-0.91-0.91			INS. CL. F		ΔT 80	K	<div><div></div><div>→ 6314-C3 (27g)</div><div>→ 6314-C3 (27g)</div></div> <div>MOBIL POLYREX EM</div> <div>5000 h</div>		
NEMA NOM EFF		95.0		% DUTY CONT.					
SFA 374-353-340					ENCL TEFC		ALT 1000 m.a.s.l.		2533 Lbs

 MOBIL POLYREX EM
 5000 h