

DATA SHEET



Three Phase Induction Motor - Squirrel Cage

Customer : Dealers Industrial Equipment 800-469-3110																			
Customer reference : 00118XT3E143TC																			
Product line : W21 Explosion-proof Motor NEMA Premium Efficiency Three-Phase	Product code : 14343086 Catalog # : 00118XT3E143TC																		
Frame : 143/5TC Output : 1 HP (0.75 kW) Poles : 4 Frequency : 60 Hz Rated voltage : 208-230/460 V Rated current : 3.16-2.86/1.43 A L. R. Amperes : 27.2-24.6/12.3 A LRC : 8.6x(Code L) No load current : 1.61-1.87/0.935 A Rated speed : 1760 rpm Slip : 2.22 % Rated torque : 2.94 ft.lb Locked rotor torque : 290 % Breakdown torque : 370 % Insulation class : F Service factor : 1.15 Moment of inertia (J) : 0.0975 sq.ft.lb Design : B	Locked rotor time : 32s (cold) 18s (hot) Temperature rise : 80 K Duty cycle : Cont.(S1) Ambient temperature : -20°C to +40°C Altitude : 1000 m.a.s.l. Protection degree : IP55 Cooling method : IC411 - TEFC Mounting : F-1 Rotation ¹ : Both (CW and CCW) Noise level ² : 51.0 dB(A) Starting method : Direct On Line Approx. weight ³ : 69.8 lb																		
Output 25% 50% 75% 100% Efficiency (%) 77.3 80.0 82.5 85.5 Power Factor 0.32 0.57 0.70 0.77	Foundation loads Max. traction : 63 lb Max. compression : 132 lb																		
<table border="0"> <tr> <td></td> <td><u>Drive end</u></td> <td><u>Non drive end</u></td> </tr> <tr> <td>Bearing type :</td> <td>6205 2RS</td> <td>6204 2RS</td> </tr> <tr> <td>Sealing :</td> <td>Oil Seal</td> <td>Lip Seal</td> </tr> <tr> <td>Lubrication interval :</td> <td>-</td> <td>-</td> </tr> <tr> <td>Lubricant amount :</td> <td>-</td> <td>-</td> </tr> <tr> <td>Lubricant type :</td> <td colspan="2">Mobil Polyrex EM</td> </tr> </table>			<u>Drive end</u>	<u>Non drive end</u>	Bearing type :	6205 2RS	6204 2RS	Sealing :	Oil Seal	Lip Seal	Lubrication interval :	-	-	Lubricant amount :	-	-	Lubricant type :	Mobil Polyrex EM	
	<u>Drive end</u>	<u>Non drive end</u>																	
Bearing type :	6205 2RS	6204 2RS																	
Sealing :	Oil Seal	Lip Seal																	
Lubrication interval :	-	-																	
Lubricant amount :	-	-																	
Lubricant type :	Mobil Polyrex EM																		
Notes downloaded from http://dealerselectric.com																			
This revision replaces and cancel the previous one, which must be eliminated. (1) Looking the motor from the shaft end. (2) Measured at 1m and with tolerance of +3dB(A). (3) Approximate weight subject to changes after manufacturing process. (4) At 100% of full load.	These are average values based on tests with sinusoidal power supply, subject to the tolerances stipulated in NEMA MG-1.																		
Rev.	Changes Summary	Performed	Checked	Date															
Performed by																			
Checked by																			
Date	11/04/2019		Page 1 / 3	Revision															

DATA SHEET



Three Phase Induction Motor - Squirrel Cage

Customer : Dealers Industrial Equipment 800-469-3110
Customer reference : 00118XT3E143TC

Thermal protection

ID	Application	Type	Quantity	Sensing Temperature
1	Winding	Thermostat - 2 wires	1 x Phase	155 °C

Rev.	Changes Summary		Performed	Checked	Date
Performed by				Page	Revision
Checked by				2 / 3	
Date	11/04/2019				

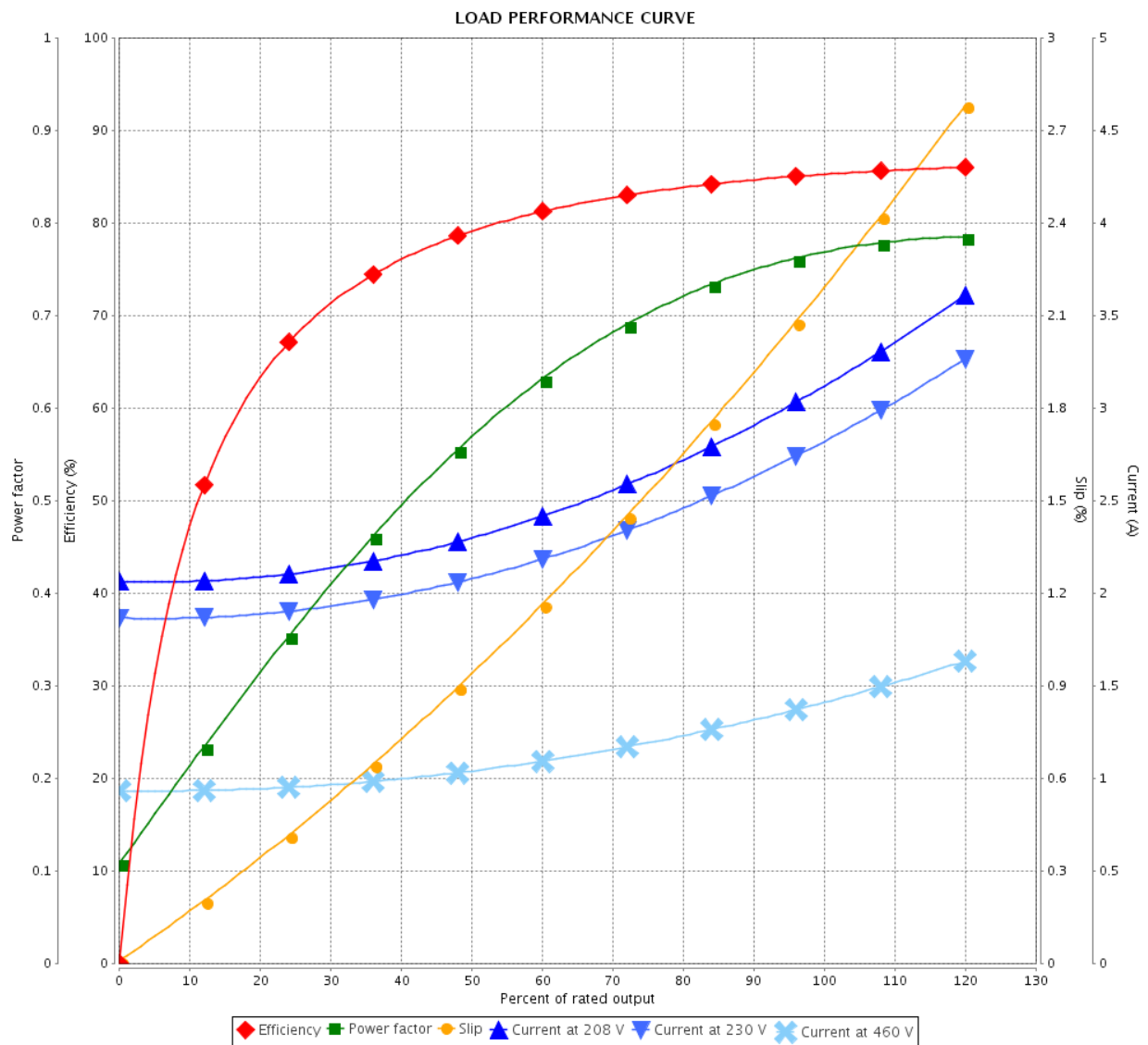
LOAD PERFORMANCE CURVE

Three Phase Induction Motor - Squirrel Cage



Customer : Dealers Industrial Equipment 800-469-3110
Customer reference : 00118XT3E143TC

Product line : W21 Explosion-proof Motor NEMA Premium Efficiency Three-Phase
Product code : 14343086
Catalog # : 00118XT3E143TC



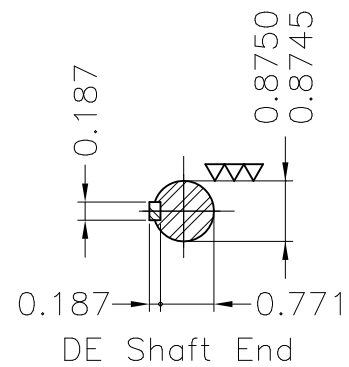
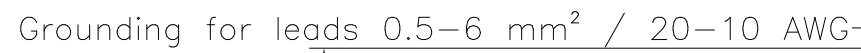
Performance : 208-230/460 V 60 Hz 4P

Rated current : 3.16-2.86/1.43 A
LRC : 8.6
Rated torque : 2.94 ft.lb
Locked rotor torque : 290 %
Breakdown torque : 370 %
Rated speed : 1760 rpm

Moment of inertia (J) : 0.0975 sq.ft.lb
Duty cycle : Cont.(S1)
Insulation class : F
Service factor : 1.15
Temperature rise : 80 K
Design : B

Rev.	Changes Summary	Performed	Checked	Date
Performed by		Page 3 / 3		
Checked by				
Date	11/04/2019			
		Revision		

THIS IS AN UPDATED REVISION, THE
PREVIOUS ONE MUST BE DISREGARDED.



1 HP 04 Poles 60Hz