

DATA SHEET



Three Phase Induction Motor - Squirrel Cage

Customer : Dealers Industrial Equipment 800-469-3110		Customer reference : 00518ET3E184TF2-S					
Product line : Rolled Steel NEMA Premium Efficiency Three-Phase		Product code : 13162620	Catalog # : 00518ET3E184TF2-S				
Frame : 182/4T	Output : 5 HP (3.7 kW)	Locked rotor time : 28s (cold) 16s (hot)	Temperature rise : 80 K				
Poles : 4	Frequency : 60 Hz	Duty cycle : Cont.(S1)	Ambient temperature : -20°C to +40°C				
Rated voltage : 208-230/460 V	Rated current : 14.4-13.0/6.49 A	Altitude : 1000 m.a.s.l.	Protection degree : IP55				
L. R. Amperes : 100-90.9/45.4 A	LRC : 7.0x(Code J)	Cooling method : IC411 - TEFC	Mounting : F-2				
No load current : 5.94-6.89/3.44 A	Rated speed : 1750 rpm	Rotation ¹ : Both (CW and CCW)	Noise level ² : 56.0 dB(A)				
Rated slip : 2.78 %	Rated torque : 14.8 ft.lb	Starting method : Direct On Line	Approx. weight ³ : 76.7 lb				
Locked rotor torque : 220 %	Breakdown torque : 300 %						
Insulation class : F	Service factor : 1.15						
Moment of inertia (J) : 0.3080 sq.ft.lb	Design : B						
Output	25%	50%	75%	100%	Foundation loads		
Efficiency (%)	88.2	88.5	89.5	89.5	Max. traction	: 300 lb	
Power Factor	0.35	0.60	0.73	0.80	Max. compression	: 376 lb	
			<u>Drive end</u>		<u>Non drive end</u>		
Bearing type	:	6206 ZZ		6205 ZZ			
Sealing	:	V'Ring		V'Ring			
Lubrication interval	:	-		-			
Lubricant amount	:	-		-			
Lubricant type	:	Mobil Polyrex EM					
Notes downloaded from http://dealerselectric.com							
This revision replaces and cancel the previous one, which must be eliminated. (1) Looking the motor from the shaft end. (2) Measured at 1m and with tolerance of +3dB(A). (3) Approximate weight subject to changes after manufacturing process. (4) At 100% of full load.				These are average values based on tests with sinusoidal power supply, subject to the tolerances stipulated in NEMA MG-1.			
Rev.	Changes Summary			Performed	Checked	Date	
Performed by							
Checked by					Page	Revision	
Date	13/04/2019				1 / 2		

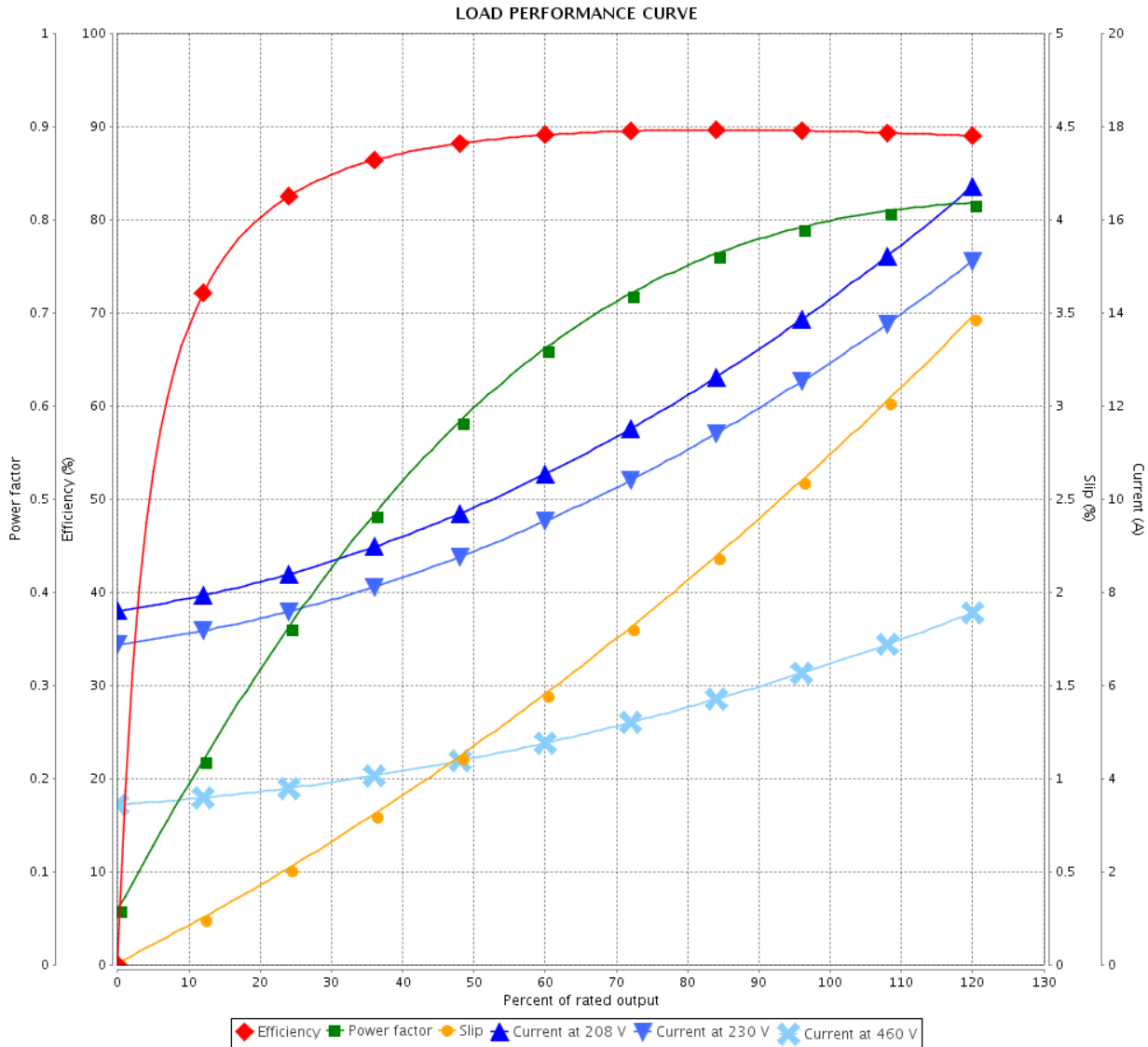
LOAD PERFORMANCE CURVE



Three Phase Induction Motor - Squirrel Cage

Customer : Dealers Industrial Equipment 800-469-3110
 Customer reference : 00518ET3E184TF2-S

Product line : Rolled Steel NEMA Premium Efficiency Three-Phase Product code : 13162620
 Catalog # : 00518ET3E184TF2-S



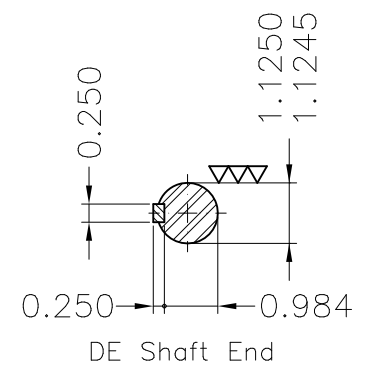
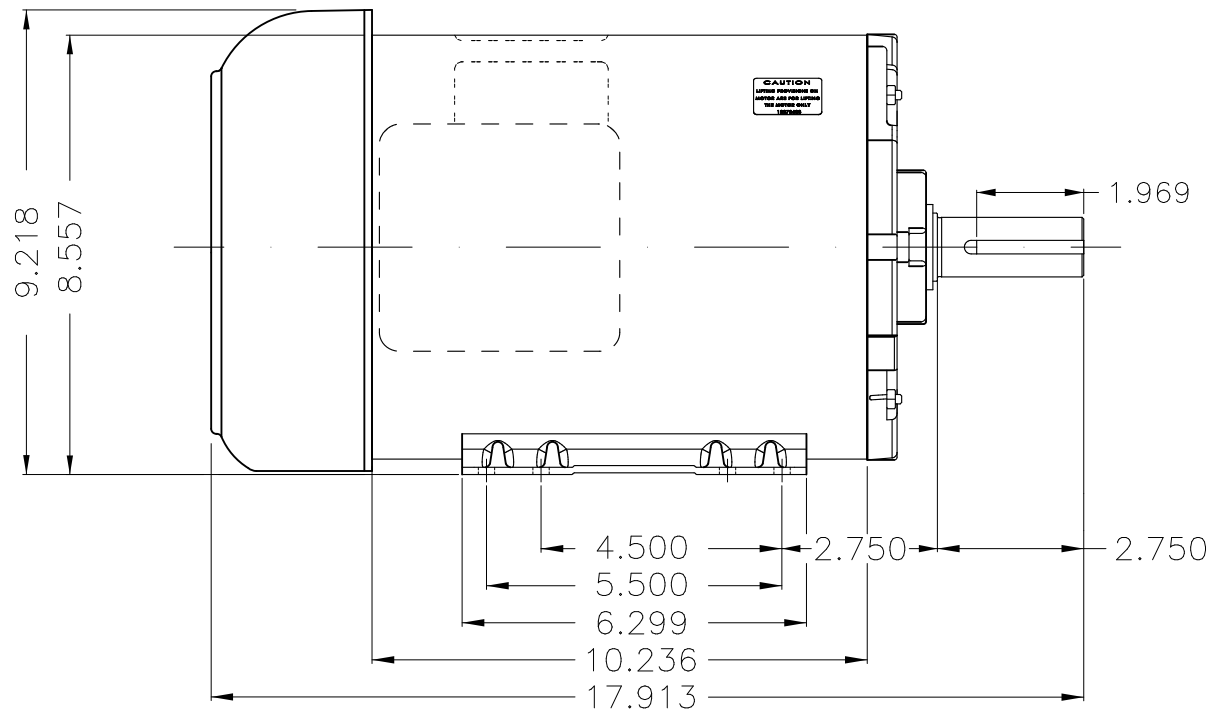
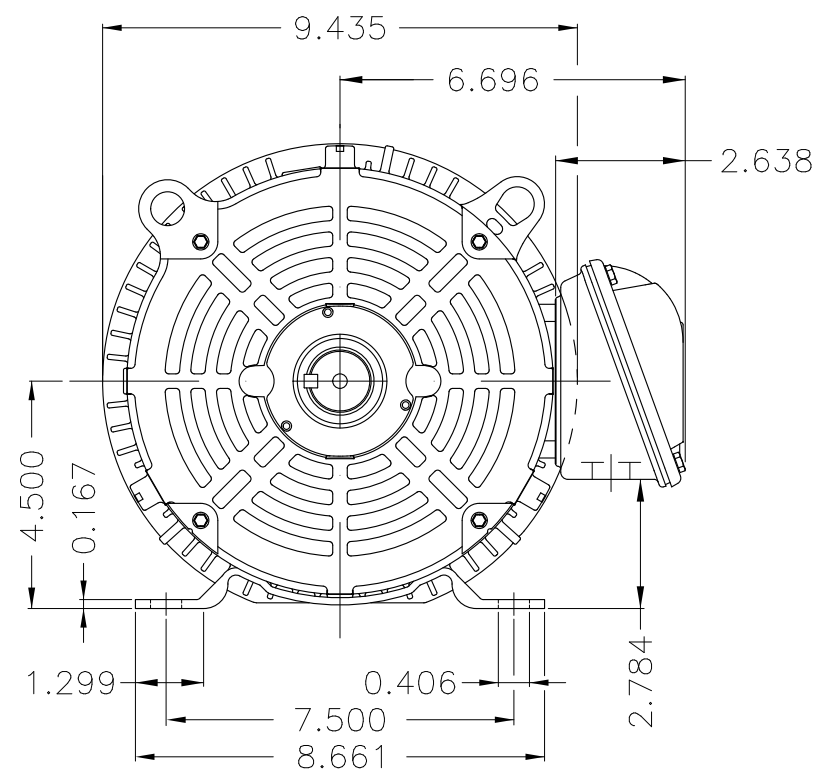
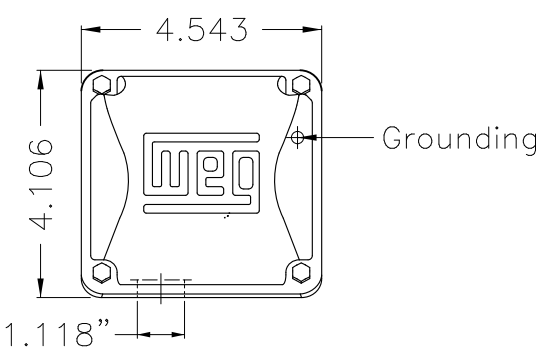
Performance : 208-230/460 V 60 Hz 4P

Rated current : 14.4-13.0/6.49 A	Moment of inertia (J) : 0.3080 sq.ft.lb
LRC : 7.0	Duty cycle : Cont.(S1)
Rated torque : 14.8 ft.lb	Insulation class : F
Locked rotor torque : 220 %	Service factor : 1.15
Breakdown torque : 300 %	Temperature rise : 80 K
Rated speed : 1750 rpm	Design : B

Rev.	Changes Summary	Performed	Checked	Date
Performed by			Page	Revision
Checked by				
Date				

Dimensões em polegada
Dimensions in inches

THIS IS AN UPDATED REVISION, THE
PREVIOUS ONE MUST BE DISREGARDED.



Color Munsell N 1 matte black
Painting plan 207N
Mounting F-2/B3L(E)

ECM	LOC	SUMMARY OF MODIFICATIONS	EXECUTED	CHECKED	RELEASED	DATE	VER
EXECUTED	USERADMIN	THREE P. MOTOR CLOS ROLLED STEEL NEMA PREM					
CHECKED		FRAME 182/4T IP55 TEFC					
RELEASED		WEG code: 13162620					
REL DT	13.04.2019	WMO Jaragua do Sul	Product Engineering	SHEET	1 / 1		

5 HP 04 Poles 60Hz

A





MADE IN MEXICO

MAT:13162620

W01 TE0IC0X0N

NEMA®
Premium

CC029A



28OUT2016 S/N:

PH 3 FR 182/4T

HP(KW) 5.0(3.7)

Hz 60

V 208-230/460

RPM 1750

A 14.4-13.0/6.49

SF 1.15 1.00 SF @ 208V

SFA 14.4-14.9/7.46

ENCL TEFC DES B IP55

CODE J DUTY CONT.

INS CL F Δ T 80 K AMB 40°C

ALT 1000 m.a.s.l.

NEMA NOM.EFF. 89.5 % PF 0.80

ALTERNATE RATING: 5HP 50Hz 190-220 / 380-415V SF1.00
15.8-14.1 / 7.88-7.47A 1425 RPM EFF 84.9% (IE1)

INTERCHANGE ANY TWO LINE WIRES TO REVERSE THE ROTATION

Inverter Duty Motor For use on VPWM VFD 1000:1VT 4:1 CT

DE:6206-ZZ ODE:6205-ZZ MOBIL POLYREX EM

WARNING: Motor must be grounded in accordance with local and national electrical codes to prevent serious electrical shocks. Disconnect power source before servicing unit.

AVERTISSEMENT: Le moteur doit être mis à la terre conformément aux codes électriques locaux et nationaux afin d'éviter tout choc électrique grave. Déconnectez l'alimentation avant l'entretien de la machine.

