

# DATA SHEET



## Three Phase Induction Motor - Squirrel Cage

Customer : Dealers Industrial Equipment 800-469-3110																			
Customer reference : 12512XT3G445T																			
Product line : W21 Explosion-proof Motor NEMA Premium Efficiency Three-Phase	Product code : 12408376 Catalog # : 12512XT3G445T																		
Frame : 444/5T Output : 125 HP Poles : 6 Frequency : 60 Hz Rated voltage : 460 V Rated current : 150 A L. R. Amperes : 1110 A LRC : 7.4x(Code H) No load current : 65.0 A Rated speed : 1185 rpm Slip : 1.25 % Rated torque : 547 ft.lb Locked rotor torque : 229 % Breakdown torque : 240 % Insulation class : F Service factor : 1.15 Moment of inertia (J) : 104 sq.ft.lb Design : B	Locked rotor time : 73s (cold) 41s (hot) Temperature rise : 80 K Duty cycle : Cont.(S1) Ambient temperature : -20°C to +40°C Altitude : 1000 m.a.s.l. Protection degree : IP55 Cooling method : IC411 - TEFC Mounting : F-1 Rotation <sup>1</sup> : Both (CW and CCW) Noise level <sup>2</sup> : 70.0 dB(A) Starting method : Direct On Line Approx. weight <sup>3</sup> : 2262 lb																		
Output                      25%                      50%                      75%                      100% Efficiency (%)              94.4                      94.5                      95.0                      95.0 Power Factor                0.41                      0.67                      0.76                      0.82	Foundation loads Max. traction : 2848 lb Max. compression : 5110 lb																		
<table border="0"> <tr> <td></td> <td><u>Drive end</u></td> <td><u>Non drive end</u></td> </tr> <tr> <td>Bearing type :</td> <td>6219 C3</td> <td>6316 C3</td> </tr> <tr> <td>Sealing :</td> <td>Viton Oil Seal</td> <td>Viton Seal</td> </tr> <tr> <td>Lubrication interval :</td> <td>12202 h</td> <td>12823 h</td> </tr> <tr> <td>Lubricant amount :</td> <td>28 g</td> <td>34 g</td> </tr> <tr> <td>Lubricant type :</td> <td colspan="2">Mobil Polyrex EM</td> </tr> </table>			<u>Drive end</u>	<u>Non drive end</u>	Bearing type :	6219 C3	6316 C3	Sealing :	Viton Oil Seal	Viton Seal	Lubrication interval :	12202 h	12823 h	Lubricant amount :	28 g	34 g	Lubricant type :	Mobil Polyrex EM	
	<u>Drive end</u>	<u>Non drive end</u>																	
Bearing type :	6219 C3	6316 C3																	
Sealing :	Viton Oil Seal	Viton Seal																	
Lubrication interval :	12202 h	12823 h																	
Lubricant amount :	28 g	34 g																	
Lubricant type :	Mobil Polyrex EM																		
Notes downloaded from <a href="http://dealerselectric.com">http://dealerselectric.com</a>																			
This revision replaces and cancel the previous one, which must be eliminated. (1) Looking the motor from the shaft end. (2) Measured at 1m and with tolerance of +3dB(A). (3) Approximate weight subject to changes after manufacturing process. (4) At 100% of full load.	These are average values based on tests with sinusoidal power supply, subject to the tolerances stipulated in NEMA MG-1.																		
Rev.	Changes Summary	Performed	Checked	Date															
Performed by																			
Checked by																			
Date	15/04/2019		Page 1 / 3	Revision															



# DATA SHEET



## Three Phase Induction Motor - Squirrel Cage

Customer : Dealers Industrial Equipment 800-469-3110  
Customer reference : 12512XT3G445T

### Thermal protection

ID	Application	Type	Quantity	Sensing Temperature
1	Winding	Thermostat - 2 wires	1 x Phase	155 °C

Rev.	Changes Summary		Performed	Checked	Date
Performed by				Page	Revision
Checked by				2 / 3	
Date	15/04/2019				



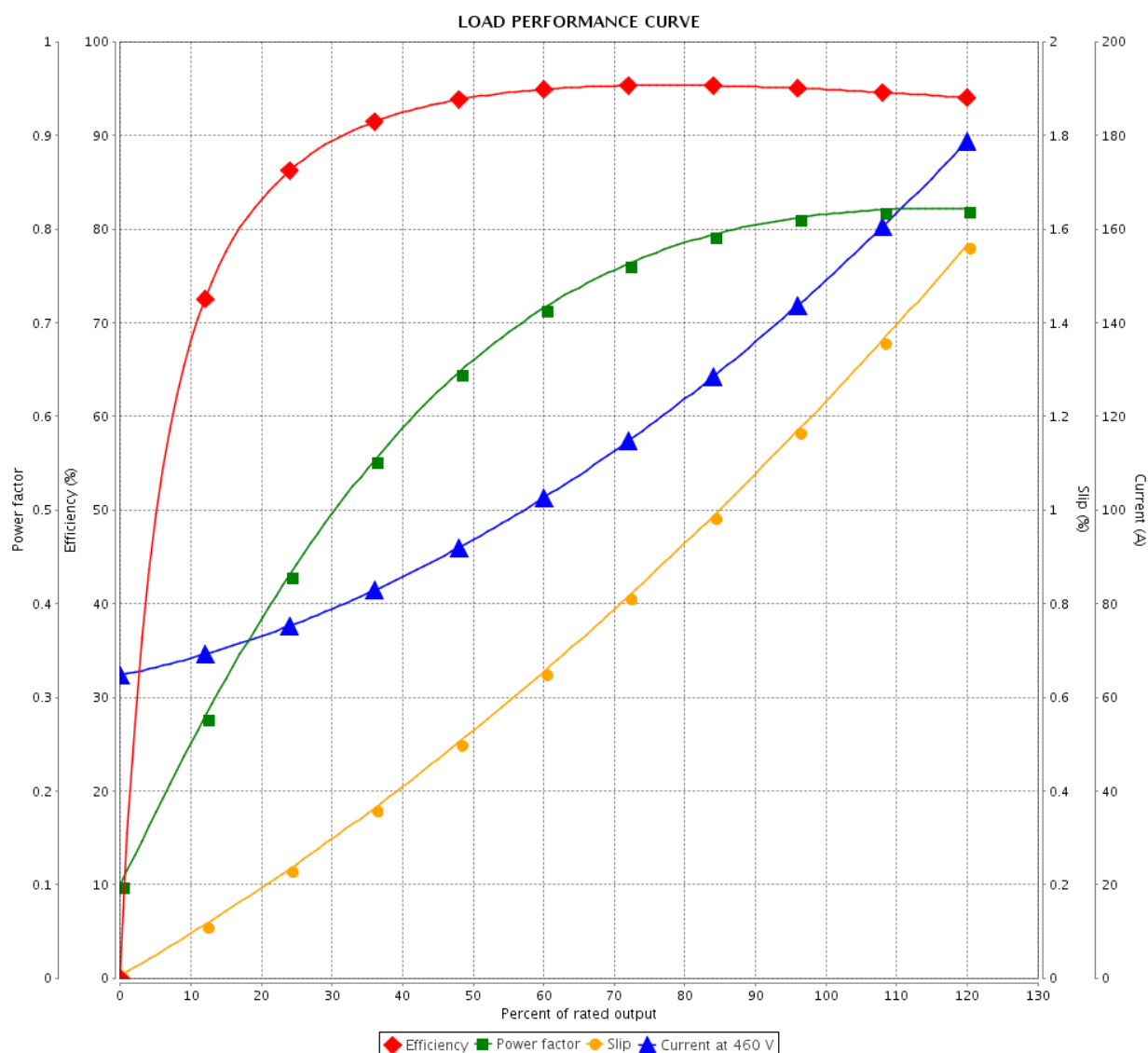
# LOAD PERFORMANCE CURVE

## Three Phase Induction Motor - Squirrel Cage



Customer : Dealers Industrial Equipment 800-469-3110  
Customer reference : 12512XT3G445T

Product line : W21 Explosion-proof Motor NEMA Premium Efficiency Three-Phase  
Product code : 12408376  
Catalog # : 12512XT3G445T



Performance : 460 V 60 Hz 6P

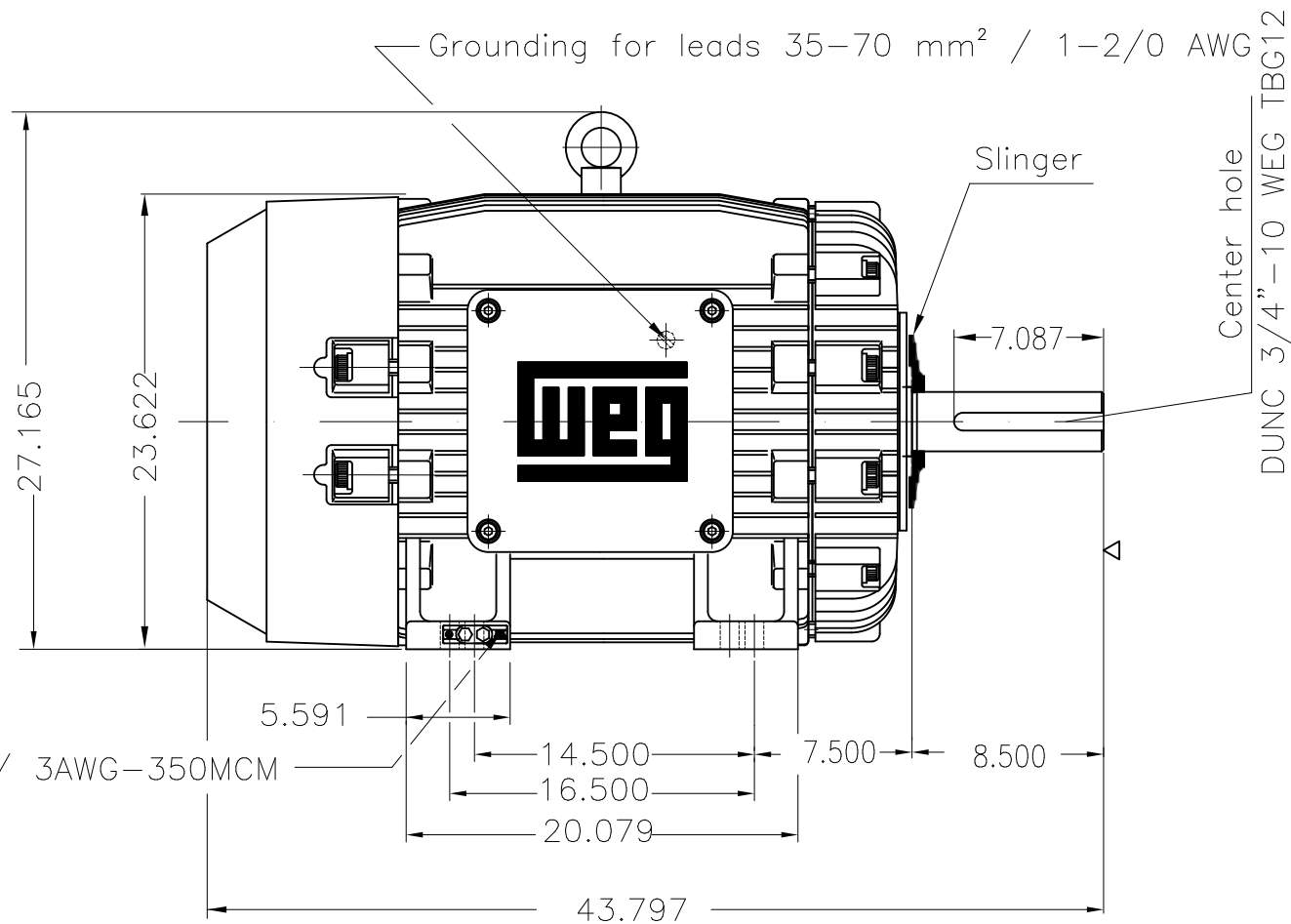
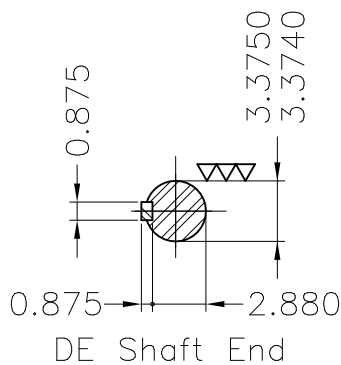
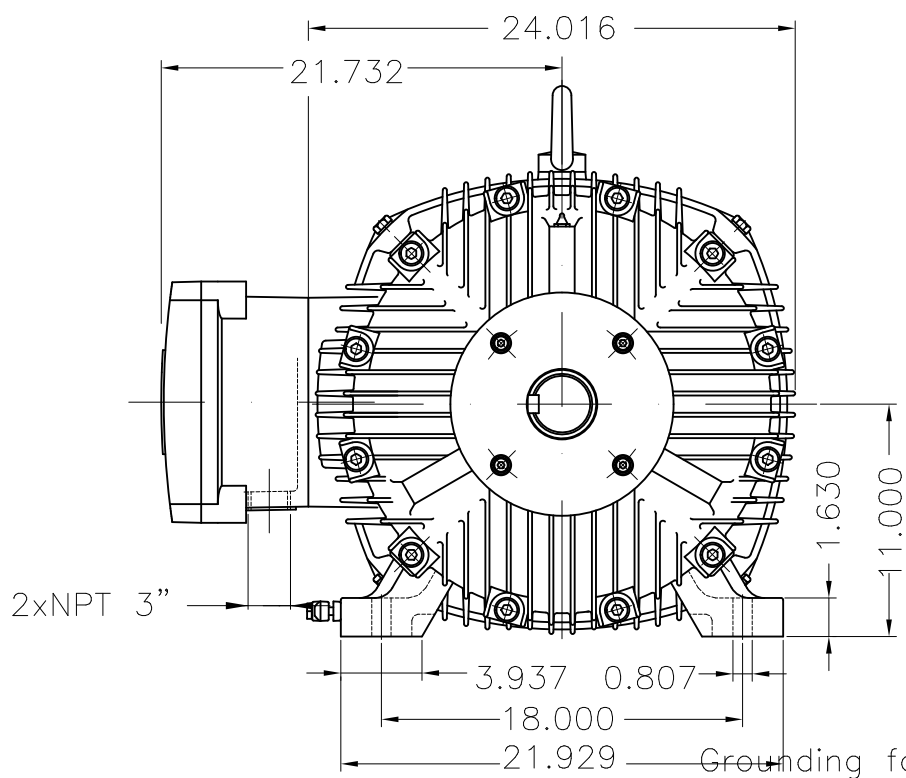
Rated current : 150 A	Moment of inertia (J) : 104 sq.ft.lb
LRC : 7.4	Duty cycle : Cont.(S1)
Rated torque : 547 ft.lb	Insulation class : F
Locked rotor torque : 229 %	Service factor : 1.15
Breakdown torque : 240 %	Temperature rise : 80 K
Rated speed : 1185 rpm	Design : B

Rev.	Changes Summary	Performed	Checked	Date
Performed by				Page 3 / 3
Checked by				
Date				
15/04/2019				Revision



Dimensões em polegada  
Dimensions in inches

THIS IS AN UPDATED REVISION, THE  
PREVIOUS ONE MUST BE DISREGARDED.



Color RAL 5009

Painting plan 202P

Mounting B3R(D)

ECM	LOC	SUMMARY OF MODIFICATIONS			EXECUTED	CHECKED	RELEASED	DATE	VER
EXECUTED	USERADMIN	THREE PHASE EXPL. PROOF MOTOR NEMA P.EFF							
CHECKED		FRAME 444/5T IP55 TEFC							
RELEASED		WEG code: 12408376							
REL DT	15.04.2019	WMO	Jaragua do Sul	Product Engineering	SHEET	1	/	1	

125 HP 06 Poles 60Hz

A

