

DATA SHEET



Single Phase Induction Motor - Squirrel Cage

Customer :
Customer reference :

Product line : W01 - ODP - Compressor Duty Standard Efficiency

Frame	: 56H	Locked rotor time	: 4 s (hot)
Output	: 5 HP (3.7 kW)	Duty cycle	: Cont.(S1)
Poles	: 2	Ambient temperature	: -20 °C to +40 °C
Frequency	: 60 Hz	Altitude	: 1000 m.a.s.l
Rated voltage	: 230 V	Cooling method	: ODPFC
Rated current	: 20.3 A	Mounting	: F-3
L. R. Amperes	: 122 A	Direct of rotation ¹	: Both
LRC (p.u.)	: 6.0 Code G	Noise level ²	: 68.0 dB(A)
No load current	: 3.70 A	Starting method	: Direct On Line
Rated speed	: 3440 rpm	Weight ³	: 0.0 lb
Slip	: 4.44 %		
Rated torque	: 7.63 ft.lb		
Locked rotor torque	: 240 %		
Pull up torque	: 200 %		
Breakdown torque	: 200 %		
Insulation class	: F		
Service factor	: 1.00		
Moment of inertia (J)	: 0.0864 sq.ft.lb		

Output	Start	50%	75%	100%	Load type	: -
Efficiency (%)	-	74.6	79.5	80.0	Load torque	: 7.63 ft.lb
Power factor	0.92	0.98	0.98	0.99	Load inertia (J=GD ² /4)	: 0.08638 sq.ft.lb

	<u>Drive end</u>	<u>Non drive end</u>	Foundation loads	
Bearing type / clearance	6203-ZZ	6202-ZZ	Maximum traction	: -
Lubrication interval	-	-	Maximum compression	: -
Lubricant amount	-	-		
Lubricant type	MOBIL POLYREX EM			

Notes:
00536OS1DCD56HZ-S

Standards	Specification	: MG1 - Part 10	Vibration	: -
	Tests	: MG1 - Part 12	Tolerance	: -
	Noise	: MG1 - Part 9		

This revision replaces and cancels the previous one, which must be eliminated.

- (1) When viewed from the drive end.
- (2) Measured at 1m and with tolerance of +3dB(A).
- (3) Approximate weight subject to changes after manufacturing process.
- (4) At the rated point.

These are average values based on tests with sinusoidal power supply, subject to the tolerances stipulated in NEMA MG 1-12.

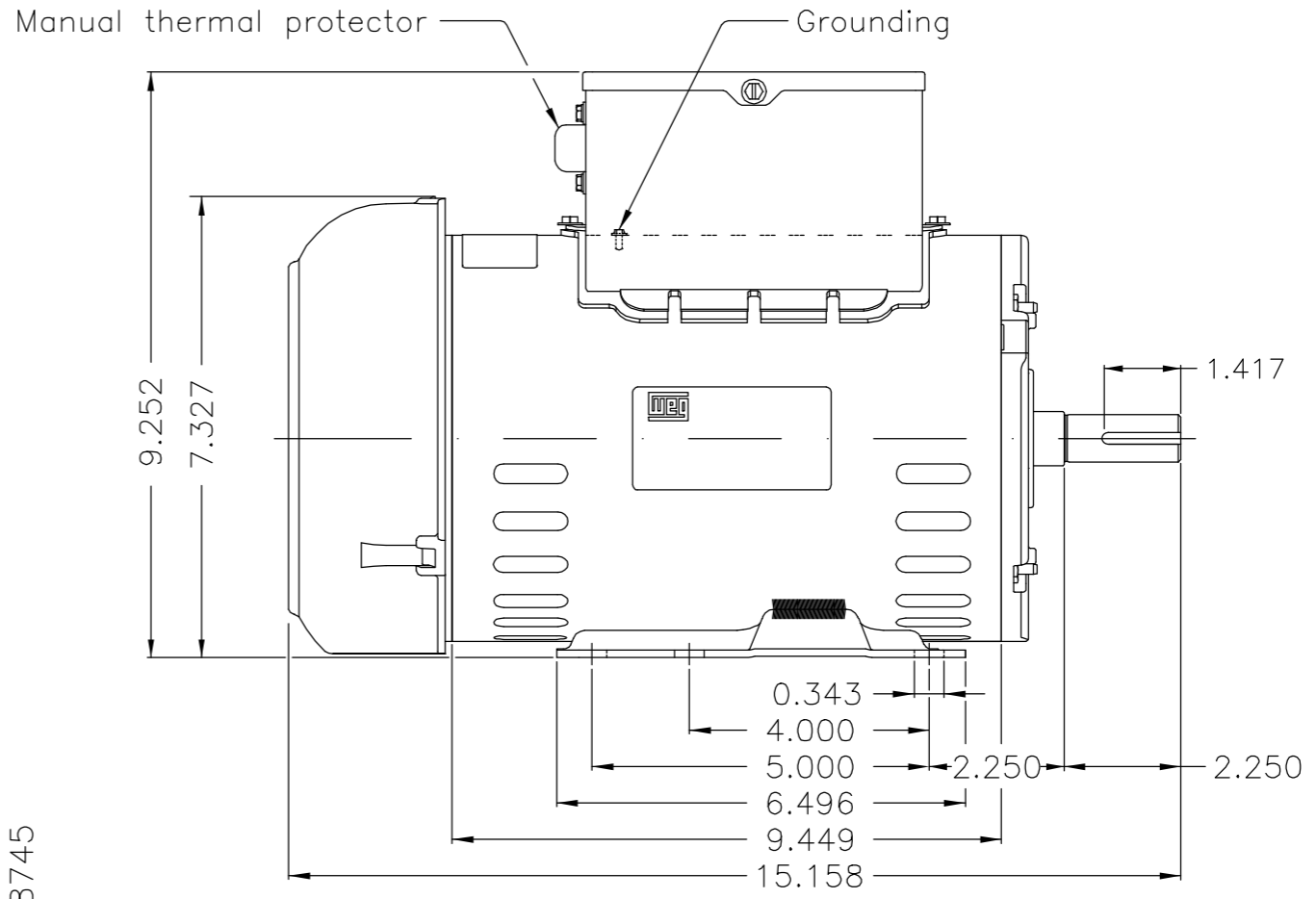
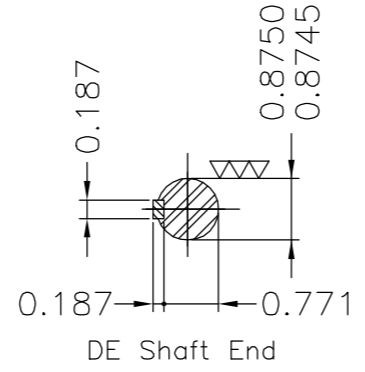
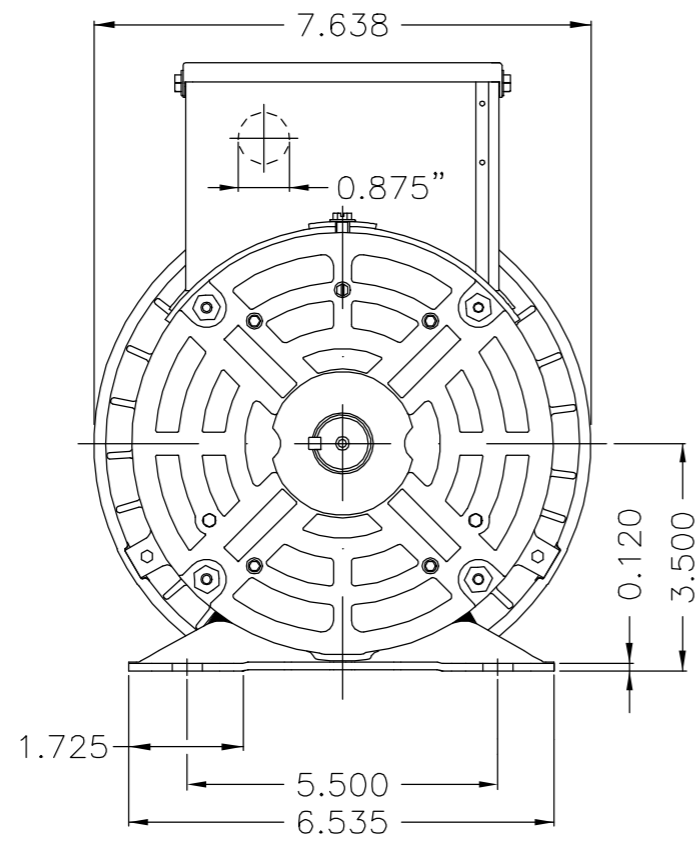
Rev.	Summary of changes	Performed	Checked	Date
Performed by	mparsell			153885/2016
Checked by	AUTOMATICO			Page Revision
Date	03/08/2016			1/1 0

EIXO/SHAFT	
PADRÃO/STANDARD	
OPCIONAL/OPTIONAL	
ESPECIAL/SPECIAL	X

Dimensões em polegada
Dimensions in inches

THIS IS AN UPDATED REVISION, THE PREVIOUS ONE MUST BE DISREGARDED.

A
B
C
D
E



Protetor térmico fenólico - manual / Phenolic thermal protector - manual
 Reforçar o pé com 2 pontos de solda mig / Supplied with reinforced weld on foot
 Forma construtiva B3T / Mounting B3T

WEG ELECTRIC CORPORATION - WEC

500001140954		CORRIGIDO NOTAS AVULSAS	LUCASSZ	PATRICKL	11.02.2016	02
500001138745			LUCASSZ	VICTORCM	05.02.2016	01
ECM	LOC	SUMMARY OF MODIFICATIONS	EXECUTED	CHECKED	RELEASED	DATE VER
EXECUTED	LUCASSZ	SINGLE PHASE ODP ROLLED STEEL FRAME 56HZ COMPRESSOR DUTY	10004060883			
CHECKED			000	02		
RELEASED	VICTORCM					
REL DT	04.02.2016	WMO Jaragua do Sul	Product Engineering	SHEET	1 / 1	

5 HP 02 Poles 60Hz 414163562

UNCONTROLLED COPY RELEASED ZME A3

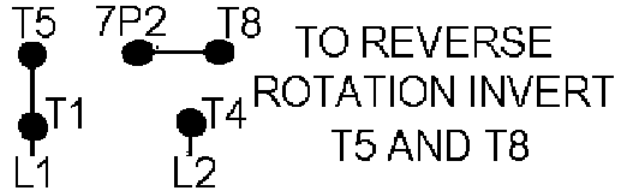
12AGO16



XXXXXXXXXXXXXXXXXXXXXXXXXXXX
W01 24M001C0X0X

S/N: AA0000000 MAT:13521268

PH 1	HP (kW) 5.00(3.70)
HZ 60	V 230
RPM 3440	A 20.30
FR 56HZ	ENCL ODP
	CODE G
AMB 40 °C	INS F ΔT
SF 1.00	DUTY CONT
SFA	



T1-BLUE T4-YELLOW T5-BLACK
T8-RED 7P2-BROWN

COMPRESSOR DUTY MOTOR

Thermally Protected