

**PE213T-3-6C**

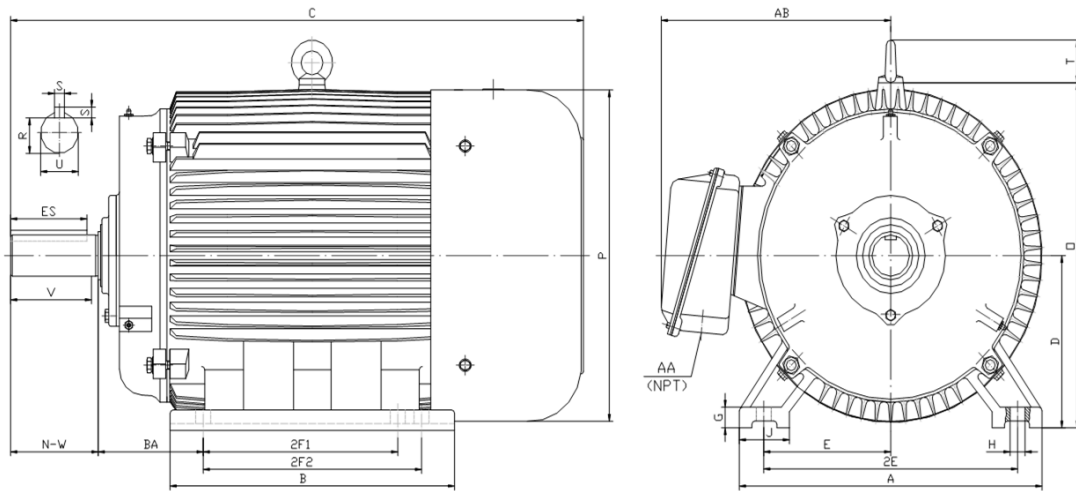
**CRUSHER DUTY ELECTRIC MOTOR**

**NEMA PREMIUM EFFICIENCY**

**TOTALLY ENCLOSED FAN COOLED**

**INVERTER DUTY 10:1 CT; 20:1 VT - NEMA MG1 PART 31**

Factory Certified for T2B Class I, Division II, Groups A,B,C & D and Class II, Division II, Groups F & G



**DIMENSIONS**

HP	RPM	Frame	MOUNTING														
			A	B	C	D	G	H	J	E	2E	2F1	2F2	O	P	T	BA
3	1200	213T	11.00	7.90	18.90	5.25	0.70	0.41	2.40	4.25	8.50	5.50	0.00	11.20	11.60	1.90	3.50

Shaft Extension, Key Set						Conduit Box		Bearings		Mount
U	V	R	S	ES	N-W	AA	AB	DE	ODE	
1.375	3.12	1.201	0.312	2.41	3.38	1.00	9.00	6308-ZZ	6308-ZZ	F1

**BEARING LUBRICATION:** The bearings come lubricated with Mobil Polyrex EM Polyurea Grease.





## PE213T-3-6C

**CRUSHER DUTY ELECTRIC MOTOR**

**NEMA PREMIUM EFFICIENCY**

**TOTALLY ENCLOSED FAN COOLED**

**INVERTER DUTY 10:1 CT; 20:1 VT - NEMA MG1 PART 31**



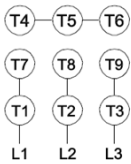
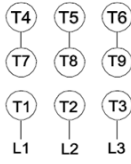



Factory Certified for T2B Class I, Division II, Groups A,B,C & D and Class II, Division II, Groups F & G

### PERFORMANCE DATA

HP	RPM	Frame	Voltage	Frequency (Hz)	Full Load S.F.	Insulation Class	NEMA Design	Slip (%)	NEMA Code	Enclosure Type	IP Rating	Max. Ambient
3	1185	213T	208-230/460	60	1.15	F	C	1.3	K	TEFC	55	40° C

Amps (460V)		Efficiency (%)				Power Factor			Torque (ft-lb)			DE Bearing	ODE Bearing	Connection	Weight (lbs.)
FLA	LRA	100%	75%	50%	Min.	100%	75%	50%	FLT	LRT%	BDT%				
4.4	32	89.5	89.0	87.0	87.5	0.670	0.600	0.480	13.5	250	320	6308-ZZ	6308-ZZ	9 Lead 2Y/Y	139

### NAME PLATE

 										<b>CONNECTION DIAGRAMS</b>  <b>208-230V</b> 		
CAT NO: PE213T-3-6C		FRAME 213T		PHASE 3								
HZ 60	S.F. 1.15	HZ 50	S.F. 1.0	ENCL TEFC	IP 55							
HP 3	RPM 1185	HP 3	RPM 980	DUTY CONT	DES C							
VOLTS 208-230/460		VOLTS 190/380		AMB 40° C	INS F							
FLA 9.2 - 8.8 / 4.4	FLA 10.4/5.2		DE BEARING 6308-ZZ									
CODE K	P.F. 0.67	CODE H	P.F. 0.75	ODE BEARING 6308-ZZ								
EFF 89.5	MIN 87.5	EFF 85.5	MIN 83.5	LUB: Mobil Polyrex EM								
MOTOR WEIGHT 139 LBS		CONNECTION 9 Lead 2Y/Y		SER NO								
General purpose use on industrial machinery installed in damp, dusty or dirty environments. Hernando, Mississippi						<b>460V</b> 						
							CC 082A					

### APPLICATIONS:

General purpose use on pumps, fans, blowers, compressors, conveyors, material handling and other industrial machinery installed in damp, dusty or dirty environments.