

# PRODUCT INFORMATION PACKET

**marathon**<sup>®</sup>  
Motors

Model No: 5KS49MN4608

Catalog No: EG287

0.5 HP Washdown Motor, 3 phase, 1800 RPM, 208-230/460 V, 56 Frame, TENV  
Washdown Duty Motors



Regal and Marathon are trademarks of Regal Beloit Corporation or one of its affiliated companies.  
©2019 Regal Beloit Corporation, All Rights Reserved. MC017097E

**REGAL**



**Nameplate Specifications**

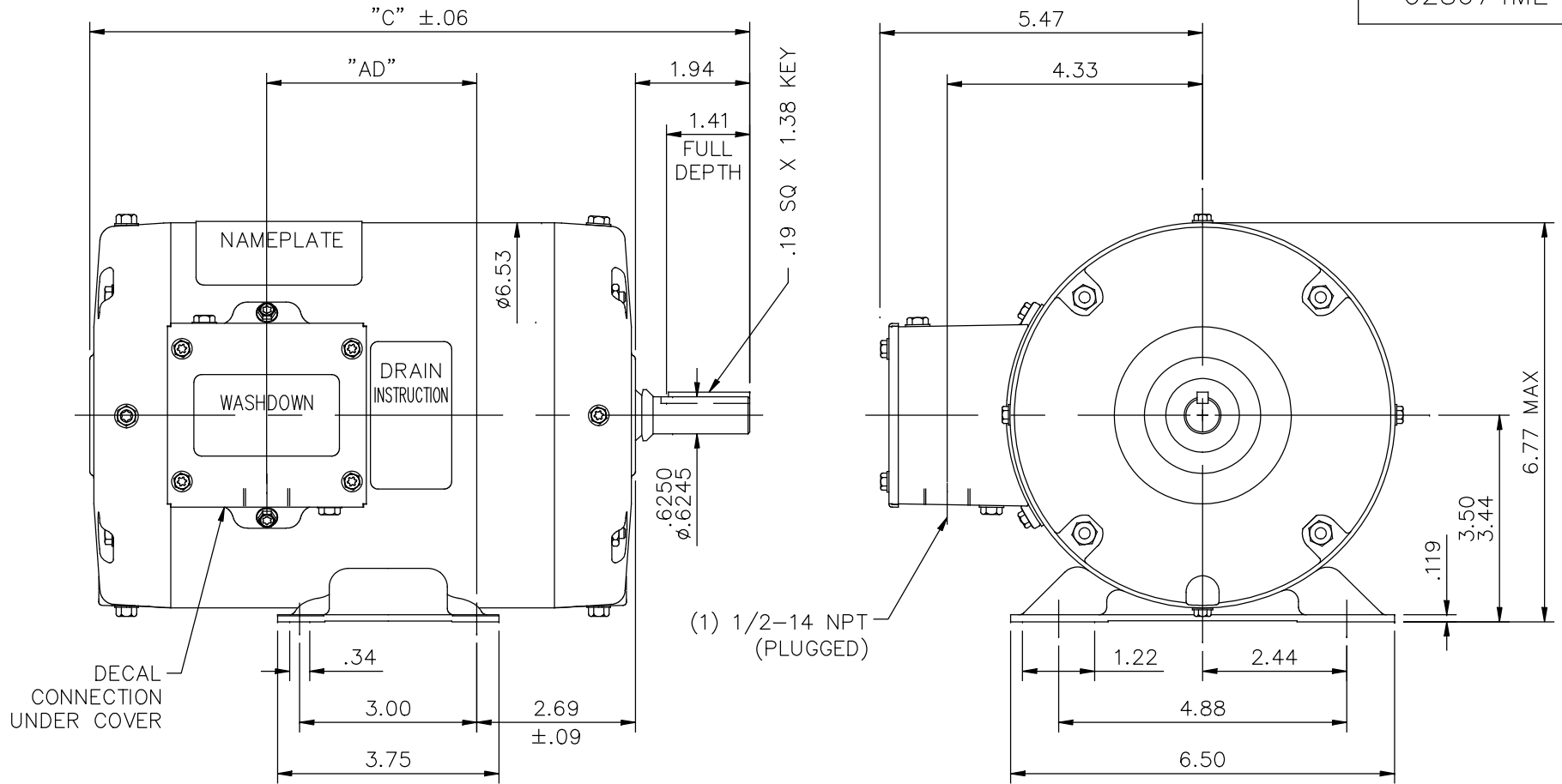
Output HP	<b>0.5 Hp</b>	Output KW	<b>0.37 kW</b>
Frequency	<b>60 Hz</b>	Voltage	<b>208-230/460 V</b>
Current	<b>1.8-1.7/0.85 A</b>	Speed	<b>1725 rpm</b>
Service Factor	<b>1.25</b>	Phase	<b>3</b>
Efficiency	<b>78.5 %</b>	Power Factor	<b>67</b>
Duty	<b>CONTINUOUS</b>	Insulation Class	<b>F</b>
Design Code	<b>B</b>	KVA Code	<b>K</b>
Frame	<b>56</b>	Enclosure	<b>TENV</b>
Thermal Protection	<b>NOT</b>	Ambient Temperature	<b>40 °C</b>
Drive End Bearing Size	<b>6205</b>	Opp Drive End Bearing Size	<b>6203</b>
UL	<b>Recognized</b>	CSA	<b>Y</b>
CE	<b>N</b>	IP Code	<b>55</b>

**Technical Specifications**

Electrical Type	<b>SQ CAGE IND RUN</b>	Starting Method	<b>ACROSS THE LINE</b>
Poles	<b>4</b>	Rotation	<b>REV</b>
Resistance Main	<b>40 Ohms</b>	Mounting	<b>RIGID</b>
Motor Orientation	<b>HORIZONTAL</b>	Drive End Bearing	<b>BALL</b>
Opp Drive End Bearing	<b>BALL</b>	Frame Material	<b>ROLLED STEEL</b>
Shaft Type	<b>STANDARD 56</b>	Overall Length	<b>10.18 in</b>
Frame Length	<b>5.5 in</b>	Shaft Diameter	<b>0.63 in</b>
Shaft Extension	<b>1.94 in</b>	Assembly/Box Mounting	<b>F1 Only</b>

This is an uncontrolled document once printed or downloaded and is subject to change without notice. Date Created:01/11/2019

028674ME



**SPECIAL FEATURES:**

- 1) SHAFT SEALS & V-RING
- 2) DRAIN HOLES IN ENDBELLS & CONDUIT BOX
- 3) STAINLESS STEEL SHAFT, HARDWARE & NAMEPLATE
- 4) GASKETS THROUGHOUT

DASH NO.	"C"	"AD"
450	9.18	1.56
500	9.68	2.06
550	10.18	2.56

TOLERANCES UNLESS SPECIFIED	
DEC.	INCHES
.X	±.1
.XX	±.03
.XXX	±.005
.XXXX	±.0005
NO.	REVISION
BY & DATE	CHK
ANG	±1/2'



TITLE  
OUTLINE - 56 FRAME  
TENV - RIGID

MAT'L.

FINISH

DRAWN LST 7/9/09

CHK

APPD

SCALE 3=8

REF EP55-030

FMF

PREV

NO. REVISION BY & DATE

THIS DRAWING IN DESIGN AND DETAIL IS OUR PROPERTY AND MUST NOT BE USED EXCEPT IN CONNECTION WITH OUR WORK ALL RIGHTS OF DESIGN AND INVENTION ARE RESERVED THIS IS AN ELECTRONICALLY GENERATED DOCUMENT - DO NOT SCALE THIS PRINT

RFP  
DIST

CAD FILE 028674ME

SIZE A

DRAWING NO. 028674ME

REV.

**CERTIFICATION DATA SHEET**

**Model#:** 5KS49MN4608 A      **WINDING#:** T634238 NONE 3  
**CONN. DIAGRAM:** 005010.01ME      **ASSEMBLY:** F1 ONLY  
**OUTLINE:** 028674ME-550

**TYPICAL MOTOR PERFORMANCE DATA**

HP	KW	SYNC. RPM	F.L. RPM	FRAME	ENCLOSURE	KVA CODE	DESIGN
1/2&1/2	.37&.37	1800	1725&1425	56	TENV	K	B

PH	Hz	VOLTS	FL AMPS	START TYPE	DUTY	INSL	S.F	AMB°C	ELEVATION
3	60/50	208- 230/460#208- 230/460	1.8- 1.7/.85&1.9- 1.8/.9	ACROSS THE LINE	CONTINUOU S	F4	1.25/1.25	40	3300

FULL LOAD EFF: 78.5	3/4 LOAD EFF: 0	1/2 LOAD EFF: 0	GTD. EFF	ELEC. TYPE	NO LOAD AMPS
FULL LOAD PF: 67	3/4 LOAD PF: 0	1/2 LOAD PF: 0	0	SQ CAGE IND RUN	1.1 / .5

F.L. TORQUE	LOCKED ROTOR AMPS	L.R. TORQUE	B.D. TORQUE	F.L. RISE°C
0 LB-FT	11.1 / 5.6	70 LB-FT 194	90 LB-FT 250	67

SOUND PRESSURE @ 3 FT.	SOUND POWER	ROTOR WK^2	MAX. WK^2	SAFE STALL TIME	STARTS /HOUR	APPROX. MOTOR WGT
0 dBA	10 dBA	0.072 LB-FT^2	0.1 LB-FT^2	0 SEC.	0	0 LBS.

**\*\*\* SUPPLEMENTAL INFORMATION \*\*\***

DE BRACKET TYPE	ODE BRACKET TYPE	MOUNT TYPE	ORIENTATION	SEVERE DUTY	HAZARDOUS LOCATION	DRIP COVER	SCREENS	PAINT
STANDARD	STANDARD	RIGID	HORIZONTAL	FALSE	NONE	FALSE	NONE	WHITE - LEESON (EPOXY)

BEARINGS		GREASE	SHAFT TYPE	SPECIAL DE	SPECIAL ODE	SHAFT MATERIAL	FRAME MATERIAL
DE	OPE						
BALL	BALL	POLYREX EM	STANDARD 56	NONE	NONE	303 STAINLESS (C-501)	ROLLED STEEL
6205	6203						

THERMO-PROTECTORS				THERMISTORS	CONTROL	SPACE /n HEATERS
THERMOSTATS	PROTECTORS	WDG RTDs	BRG RTDs			
NONE	NOT	NONE	NONE	NONE	FALSE	NONE VOLTS

If Inverter equals NONE, contact factory for further information

INVERTER TORQUE: NONE
INV. HP SPEED RANGE: NONE
ENCODER: NONE
NONE NONE
NONE NONE PPR
BRAKE: NONE NONE
NONE P/N NONE
NONE NONE
NONE FT-LB NONE V NONE Hz

\*  
N  
O  
T  
E  
S  
\*

DATE: 06/28/2017 07:04:27 AM  
 FORM 3531 REV.3 02/07/99

\*\* Subject to change without notice.

Data Sheet



5K949MN4608

Date: 12/14/2018  
 Customer:   
 Attention:   
 Submitted by: FAREEDA DUDEKULA

5K949MN4608  
 Submitted  
 Data @ 460 V

Motor Load Data									
Load	0%	25%	50%	75%	100%	115%	125%	LR	
Current (Amps)	0.53	0.00	0.00	0.00	0.00	0.00	0.00	5.6	
Torque (ft-lb)	0.00	#DIV/0!	#DIV/0!	#DIV/0!	#DIV/0!	#DIV/0!	#DIV/0!	#DIV/0!	
RPM	1800	0	0	0	0	0	0	0	
Efficiency (%)	0.0	0.0	0.0	0.0	0.0	0.0	0.0	0.0	
P.F. (%)	0.0	0.0	0.0	0.0	0.0	0.0	0.0	0.0	

Motor Speed Data									
	LR	Pull-Up	BD	Rated	Idle				
Speed (RPM)	0	900	1656	0	1800				
Current (Amps)	5.6	5.1	3.3	0.00	0.53				
Torque (ft-lb)	#DIV/0!	#DIV/0!	#DIV/0!	#DIV/0!	0.00				

Information Block

HP	0.8
Sync. RPM	1800
Frame	56
Enclosure	TENV
Construction	TF
Voltage	208-230/460#208-230/460 V
Frequency	60 Hz
Design	B
LR Code letter	K
Service Factor	1.25
Temp Rise @ FL	0 °C
Duty	CONT
Ambient	40 °C
Elevation	1,000 feet
Motor/Shaft wk <sup>2</sup>	0.07 Lb-Ft <sup>2</sup>
Ret Wdg	T634238 NONE
Sound Pressure @ 1M	0 dBA
VFD Rating	NONE
Outline Dwg	028674ME-550
Conn. Diag	005010.01ME
Additional Specifications:	
EQUIV CKT (OHMS / PHASE)	
R1	R2
X1	X2
Xm	Xm

