

PRODUCT INFORMATION PACKET

marathon[®]
Motors

Model No: 182TEFR5326
Catalog No: Z617
2,1800,TEFC,182TC,DC/180
SCR



Regal and Marathon are trademarks of Regal Beloit Corporation or one of its affiliated companies.
©2018 Regal Beloit Corporation, All Rights Reserved. MC017097E

REGAL[®]



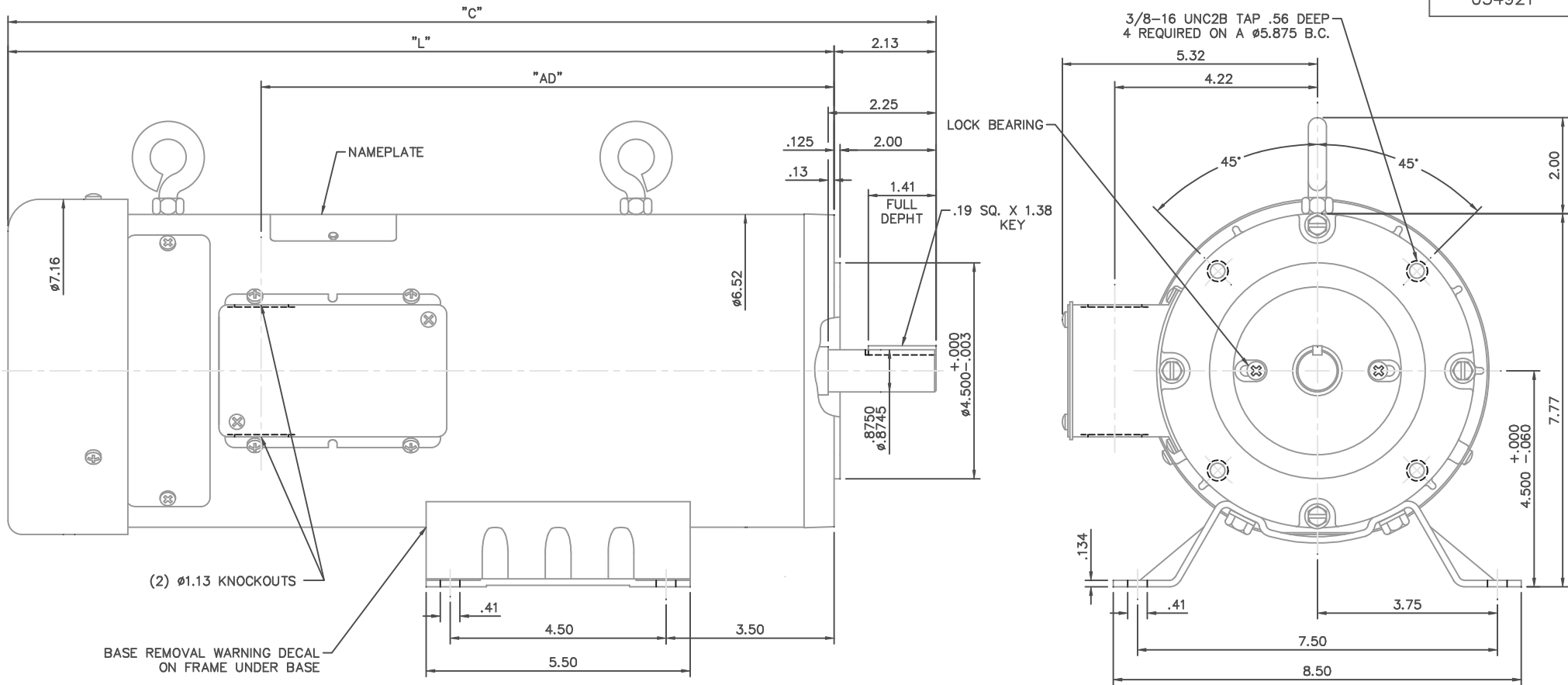
Nameplate Specifications

Output HP	2 Hp	Output KW	1.5 kW
Voltage	180 V	Current	9.5 A
Speed	1750 rpm	Service Factor	1
Efficiency	78.8 %	Duty	Continuous
Insulation Class	H	Frame	KS182BC
Enclosure	Totally Enclosed Fan Cooled	Overload Protector	No
Ambient Temperature	40 °C	Drive End Bearing Size	6205
Opp Drive End Bearing Size	6203	UL	Recognized
CSA	Y	CE	N

Technical Specifications

Rotation	Reversible	Mounting	Rigid C base
Frame Length	14.50 in	Shaft Diameter	0.875 in
Outline Drawing	034921		

This is an uncontrolled document once printed or downloaded and is subject to change without notice. Date Created: 06/29/2018



- NOTES:
1. MAXIMUM FACE RUNOUT TO BE .004 T.I.R.
 2. MAXIMUM PILOT ECCENTRICITY .004 T.I.R
 3. PERMISSIBLE SHAFT RUNOUT .002 T.I.R.
 4. GASKETS THROUGHOUT.

JS180	18.84	16.72	11.44	TS180	22.34	20.22	14.94
HS180	18.34	16.22	10.94	RS180	21.84	19.72	14.44
GS180	17.84	15.72	10.44	PS180	21.34	19.22	13.94
FS180	17.34	15.22	9.94	NS180	20.84	18.72	13.44
ES180	16.84	14.72	9.44	MS180	20.34	18.22	12.94
DS180	16.34	14.22	8.94	LS180	19.84	17.72	12.44
CS180	15.84	13.72	8.44	KS180	19.34	17.22	11.94
FRAME	"C"	"L"	"AD"	FRAME	"C"	"L"	"AD"

				TOLERANCES UNLESS SPECIFIED		DRAWN RPB 2/25/02	
				DEC. INCHES		CHK	
				.X ±.1		APPD B.C. 2/25/02	
				.XX ±.03		SCALE 1=2	
				.XXX ±.005		REF 033945	
				.XXXX ±.0005		FMF 128017.00	
				CHK ANG ±1/2'		PREV	
O1 MOVED $\phi 1.13$ KNOCKOUT NOTE TO SIDE VIEW/ECR85901. RPB 7/2/04				BY & DATE		RFP CAD FILE 034921	
NO. REVISION				RFP		SIZE DRAWING NO.	
THIS DRAWING IN DESIGN AND DETAIL IS OUR PROPERTY AND MUST NOT BE USED EXCEPT IN CONNECTION WITH OUR WORK ALL RIGHTS OF DESIGN AND INVENTION ARE RESERVED THIS IS AN ELECTRONICALLY GENERATED DOCUMENT - DO NOT SCALE THIS PRINT				DIST		B 034921	
						REV. 01	