

# PRODUCT INFORMATION PACKET

**marathon**<sup>®</sup>  
Motors

Model No: 056T34W99005

Catalog No: N224

1.50 HP Washdown Motor, 3 phase, 3600 RPM, 208-230/460 V, 56J Frame, TEFC  
Washdown Duty Motors



Regal and Marathon are trademarks of Regal Beloit Corporation or one of its affiliated companies.  
©2019 Regal Beloit Corporation, All Rights Reserved. MC017097E

**REGAL**



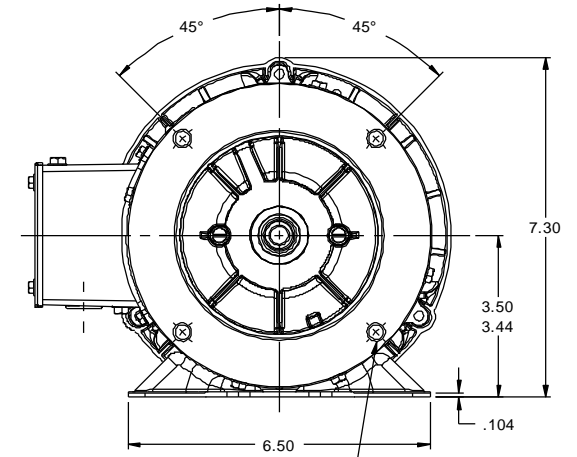
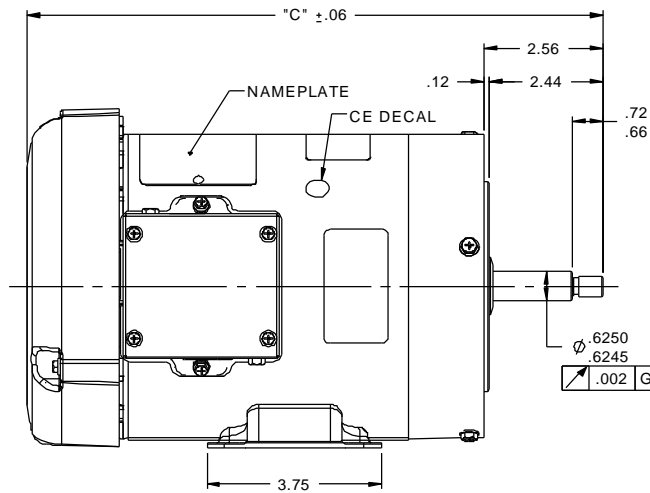
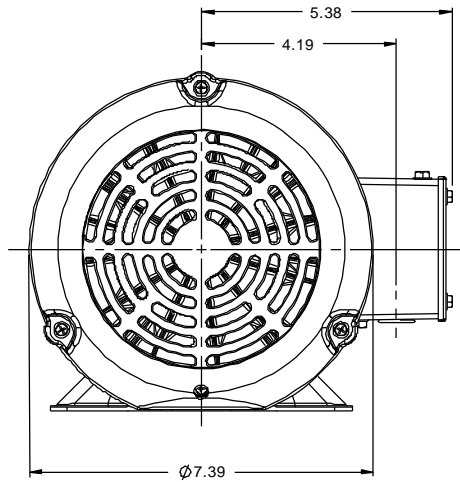
**Nameplate Specifications**

Output HP	<b>1.50 Hp</b>	Output KW	<b>1.1 kW</b>
Frequency	<b>60 Hz</b>	Voltage	<b>208-230/460 V</b>
Current	<b>4.4-4.2/2.1 A</b>	Speed	<b>3450 rpm</b>
Service Factor	<b>1.15</b>	Phase	<b>3</b>
Efficiency	<b>81.5 %</b>	Power Factor	<b>84</b>
Duty	<b>Continuous</b>	Insulation Class	<b>F</b>
Design Code	<b>B</b>	KVA Code	<b>K</b>
Frame	<b>56J</b>	Enclosure	<b>Totally Enclosed Fan Cooled</b>
Thermal Protection	<b>No</b>	Ambient Temperature	<b>40 °C</b>
Drive End Bearing Size	<b>6205</b>	Opp Drive End Bearing Size	<b>6203</b>
UL	<b>Recognized</b>	CSA	<b>Y</b>
CE	<b>Y</b>	IP Code	<b>55</b>

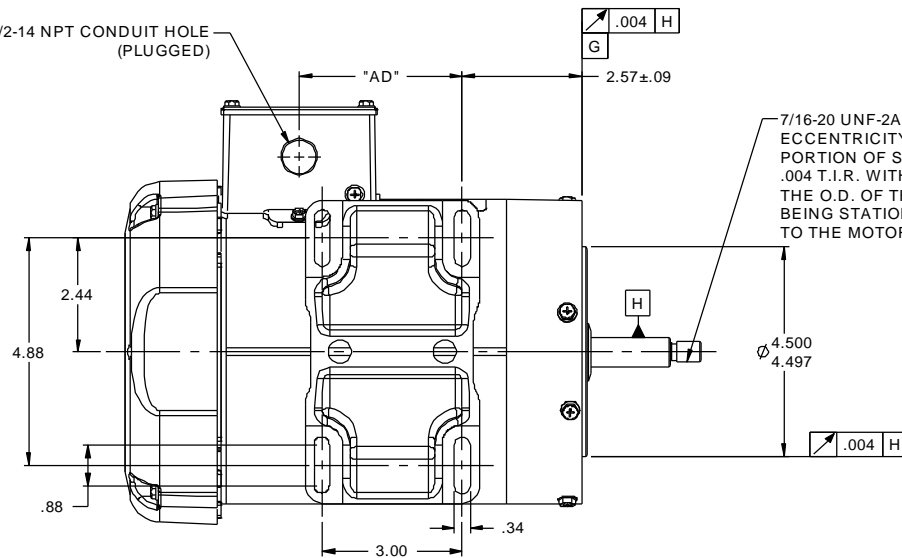
**Technical Specifications**

Electrical Type	<b>Squirrel Cage Induction Run</b>	Starting Method	<b>Across The Line</b>
Poles	<b>2</b>	Rotation	<b>Reversible</b>
Resistance Main	<b>12.6 Ohms</b>	Mounting	<b>Rigid Base</b>
Motor Orientation	<b>Horizontal</b>	Drive End Bearing	<b>Ball</b>
Opp Drive End Bearing	<b>Ball</b>	Frame Material	<b>Rolled Steel</b>
Shaft Type	<b>J</b>	Overall Length	<b>12.37 in</b>
Frame Length	<b>6.00 in</b>	Shaft Diameter	<b>0.625 in</b>
Shaft Extension	<b>1.88 in</b>	Assembly/Box Mounting	<b>F1 ONLY</b>

This is an uncontrolled document once printed or downloaded and is subject to change without notice. Date Created:01/11/2019



(1) 1/2-14 NPT CONDUIT HOLE (PLUGGED)



3/8-16 UNC-2B x .56 DEEP  
(4) REQ'D. ON A Ø5.875 B.C.

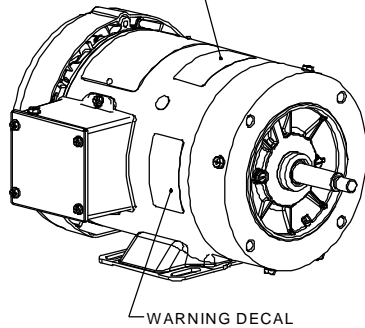
7/16-20 UNF-2A R.H. THREAD  
ECCENTRICITY OF THREADED  
PORTION OF SHAFT IS HELD WITHIN  
.004 T.I.R. WITH THE INDICATOR ON  
THE O.D. OF THE GROUND RING GAGE  
BEING STATIONARY WITH RESPECT  
TO THE MOTOR.

### WASHGUARD MOTOR

- SPECIAL FEATURES:
1. SHAFT SEALS & V-RING.
  2. PLUGGED DRAIN HOLES IN ENDBELLS & CONDUIT BOX.
  3. BUNA-N GASKETS THROUGHOUT.
  4. STAINLESS STEEL SHAFT, HARDWARE & NAMEPLATE.

DASH NO.	"C"	"AD"
450	10.87	2.00
500	11.37	2.50
550	11.87	3.00
600	12.37	3.50
650	12.87	4.00
700	13.37	4.50

DRAIN HOLE  
DECAL



WARNING DECAL

TOLERANCES UNLESS SPECIFIED		marathon electric	DRAWN UD 12/27/12
DEC	INCHES		
X	±.1	TITLE OUTLINE - 56J FRAME TEFC - RIGID "C" FACE MAT'L WASHGUARD - JET PUMP	APPR
XX	±.03		SCALE 3:8
XXX	±.005		REF 607-0014
XXXX	±.0005		FMF 56TB4W99003
NO	REVISION	BY & DATE	PAGE OF
	THIRD ANGLE PROJECTION	CHK LANG ±1/2°	FINISH
		RFP	PREV
		NETWORK FILE NAME 607-0014ME	SIZE B
			DRAWING NO 607-0014ME
			REV