

PRODUCT INFORMATION PACKET

marathon[®]
Motors

Model No: 056T17WD5337

Catalog No: N496

2 HP Washdown Motor, 3 phase, 1800 RPM, 208-230/460 V, 56HC Frame, TEFC
Paint Free NEMA Washdown Motors



Regal and Marathon are trademarks of Regal Beloit Corporation or one of its affiliated companies.
©2019 Regal Beloit Corporation, All Rights Reserved. MC017097E

REGAL



Nameplate Specifications

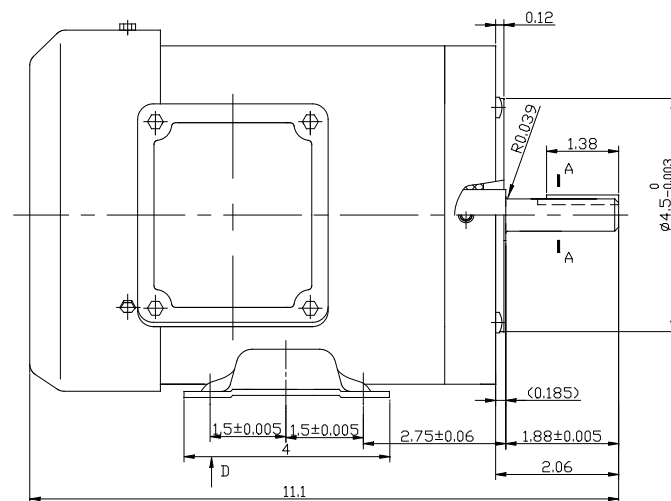
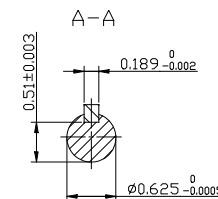
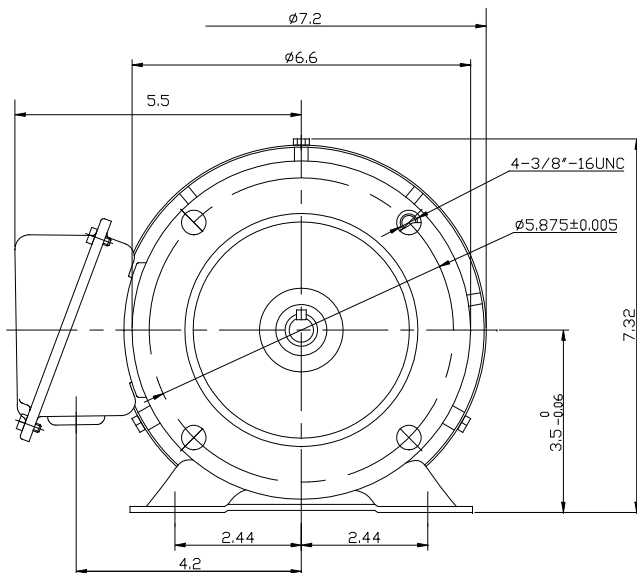
Output HP	2 Hp	Output KW	1.5 kW
Frequency	60 Hz	Voltage	208-230/460 V
Current	6.0-5.6/2.8 A	Speed	1740 rpm
Service Factor	1.15	Phase	3
Efficiency	84 %	Power Factor	75
Duty	Continuous	Insulation Class	F
Design Code	B	KVA Code	L
Frame	56HC	Enclosure	Totally Enclosed Fan Cooled
Thermal Protection	No	Ambient Temperature	40 °C
Drive End Bearing Size	6205	Opp Drive End Bearing Size	6203
UL	Recognized	CSA	Y
CE	Y	IP Code	56

Technical Specifications

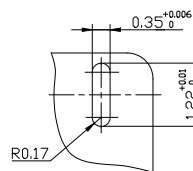
Electrical Type	Squirrel Cage Induction Run	Starting Method	Across The Line
Poles	4	Rotation	Reversible
Resistance Main	7.44 Ohms	Mounting	Rigid Base
Motor Orientation	Horizontal	Drive End Bearing	Ball
Opp Drive End Bearing	Ball	Frame Material	Stainless Steel
Shaft Type	T	Overall Length	13.77 in
Shaft Diameter	0.625 in	Assembly/Box Mounting	F1 ONLY

This is an uncontrolled document once printed or downloaded and is subject to change without notice. Date Created:01/11/2019

056T17WD5337



D DIRECTION



UL MODEL NO.	HP	VOLTS	Hz	PH	RPM	thermal protector	IP
056T17WD5337	3/4,1/2	208-230/460,190/380	60,50	3	1740,1440	NONE	55
056T17WD5338	1/2,1/3	208-230/460,190/380	60,50	3	1740,1440	NONE	55

TOLERANCES UNLESS SPECIFIED		DRAWN KB 10/23/2018	
DEC.	INCHES	CHK	
X	±.1	APPD	
XX	±.01	SCALE 5=8	
XXX	±.005	REF	
00	NEW DRAWING	KB 10/23/18	JD
NO.	REVISION	BY & DATE	CHK ANG ±1/2°
THIS DRAWING IN DESIGN AND DETAIL IS OUR PROPERTY AND MUST NOT BE USED EXCEPT IN CONNECTION WITH OUR WORK ALL RIGHTS OF DESIGN AND INVENTION ARE RESERVED THIS IS AN ELECTRONICALLY GENERATED DOCUMENT - DO NOT SCALE THIS PRINT		RFP	CAD FILE 056T17WD5337
		DIST	SIZE A
		DRAWING NO. 056T17WD5337	
		REV. 00	

REGAL™ Regal Beloit America, Inc.

TITLE OUTLINE
56HC FRAME - TEFC



P.O. BOX 8003
WAUSAU, WI 54401-8003
PH. 715-675-3311

DATA VOLTS: 460

CERTIFICATION DATA SHEET

CUSTOMER P.O. #:
 ORDER #: 00501001ME
 REFERENCE MODEL #: 56T17WD5337
 CONN. DIAGRAM: NONE
 CAT #: N496
 OUTLINE: NONE
 T634368 FR 3 CUSTOMER PART #:
 WINDING: T634368 FR 3 MOUNTING: F1 ONLY
 SPEED:
 TYPICAL MOTOR PERFORMANCE DATA

HP	KW	SYNC RPM	FL RPM	FRAME	ENCLOSURE	TYPE	KVA CODE	DESIGN
2	1.5	1800	1735	56HC	TEFC	TEF	L	B

PH	HZ	VOLTS	AMPS	START TYPE	DUTY	INSL	S.F.	AMB	ELEV.
3	60/50	208-230/460#190/380	999-5.45/2.75&5.15/2.5	ACROSS-THE LINE	CONT	F	1.15	40	3300
	F.L. EFF	85.3	3/4 LD EFF	87.2	1/2 LD EFF	86.5	GTD EFF		ELECT. TYPE
	F.L. PF	80.0	3/4 LD PF	71.8	1/2 LD PF	59.5	0.0		SQ CAGE IND RUN

F.L. TORQUE	LR AMPS @ 460 V	L.R. TORQUE	B.D. TORQUE	F.L. RISE (°C)
6.0 LB-FT	23.0	20.5 LB-FT	342%	24.0 LB-FT
				400%
				58

@ 3 FT.	POWER	ROTOR WK ²	MAX. LOAD WK ²	SAFE STALL TIME	START/SHOUR	MOTOR WGT
60 DBA	69 DBA	0.14 LB-FT ²	0.1 LB-FT ²	10 SEC.	0	0 LB.

*** SUPPLEMENTAL INFORMATION ***

DE BRACKET TYPE	ODE BRACKET TYPE	MOUNT TYPE	MOTOR ORIENTATION	SEVERE DUTY	HAZARDOUS LOCATION	DRIP COVER	SCREENS	PAINT
C-FACE	STANDARD	RIGID	HORIZONTAL	NO	NONE	NO	NONE	NO PAINT

BEARINGS	GREASE	SHAFT TYPE	SPECIAL DE	SPECIAL ODE	SHAFT MATERIAL	FRAME MATERIAL
DE BALL 6205	POLYREX EM	T	NONE	NONE	303 STAINLESS (C-501)	STAINLESS STEEL

THERMOSTATS	PROTECTORS	WDG RTD's	BRG RTD's	THERMISTORS	CONTROL	SPACE HEATERS
NONE	NOT	NONE	NONE	NONE	FALSE	NA

R1 (ohms/ph)	R2 (ohms/ph)	X1 (ohms/ph)	X2 (ohms/ph)	Xm (ohms/ph)	VIBRATION (in/sec)	FLOAT
0	0	0	0	0	0.150	ODE

N	INVERTER TORQUE: NONE
O	INV. HP SPEED RANGE: NONE
T	ENCODER: NONE
E	NONE
S	NONE
	BRAKE: NONE
	NONE
	FT-LB: NA
	VOLTAGE: NONE
	NONE
	NONE
	PPR

PREPARED BY: FAREEDA DUDEKULA
 DATE: 9/17/2018
 FORM: 3531 REV 4 2/27/06
 UL: V:INS, CONST UL REC
 HZ:

Data Sheet

5617WDS337



Submital

Data @ 460 V

Date: 12/10/2018

Customer:
 Attention:
 Submitted by: FAREEDA DUDEKULA

Motor Load Data

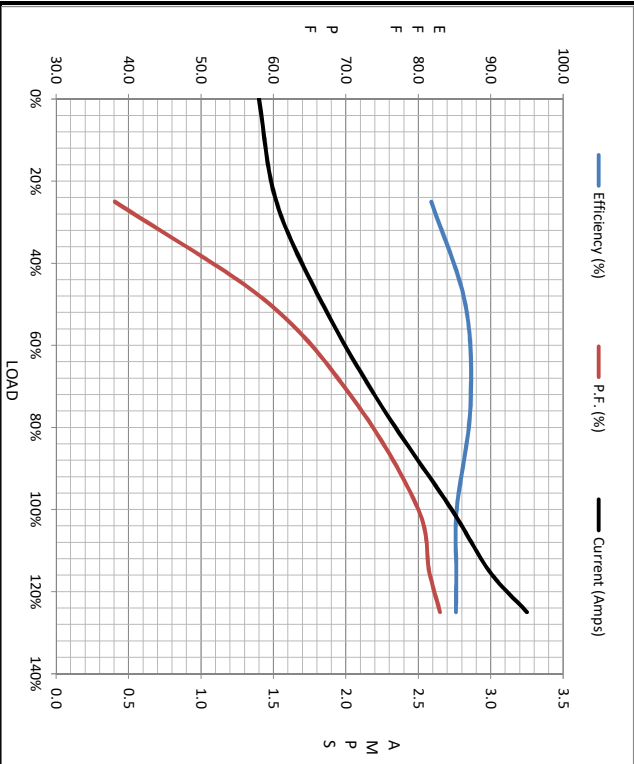
Load	0%	25%	50%	75%	100%	115%	125%	LR
Current (Amps)	1.40	1.52	1.84	2.25	2.73	2.99	3.3	23.0
Torque (ft-lb)	0.00	1.49	3.0	4.5	6.0	6.8	7.5	20.5
RPM	1800	1786	1770	1752	1735	1727	1714	0
Efficiency (%)		81.8	86.5	87.2	85.3	85.3	85.2	
P.F. (%)	9.9	38.1	59.5	71.8	80.0	81.5	83.0	0.0

Motor Speed Data

	LR	Pull-Up	BD	Rated	Idle
Speed (RPM)	0	900	1656	1735	1800
Current (Amps)	23.0	21.2	13.8	2.73	1.40
Torque (ft-lb)	20.5	19.8	24.0	6.0	0.00

Information Block

HP	2.0			
Sync. RPM	1800			
Frame	56H			
Enclosure	TEFC			
Construction	TS			
Voltage	208-230/460#190/380 V			
Frequency	60 Hz			
Design	B			
LR Code letter	L			
Service Factor	1.15			
Temp Rise @ FL	58 °C			
Duty	CONT			
Ambient	40 °C			
Elevation	1,000 feet			
Motor/Shaft Wk ²	0.14 Lb-Ft ²			
Ret Wdg	T634368 FR			
Sound Pressure @ 1M	60 DBA			
VFD Rating	NONE			
Outline Dwg	NONE			
Conn. Diag	005010.01ME			
Additional Specifications:				
0				
0				
R1	R2	X1	X2	Xm
0.0000	0.0000	0.0000	0.0000	0.0000



Speed - Torque Curve

