

PRODUCT INFORMATION PACKET

marathon[®]
Motors

Model No: 056T17D5369

Catalog No: EXK061

1.5 HP General Purpose Motor, 3 phase, 1800 RPM, 575 V, 56H Frame, ODP
Three Phase ODP Motors



Regal and Marathon are trademarks of Regal Beloit Corporation or one of its affiliated companies.
©2019 Regal Beloit Corporation, All Rights Reserved. MC017097E

REGAL



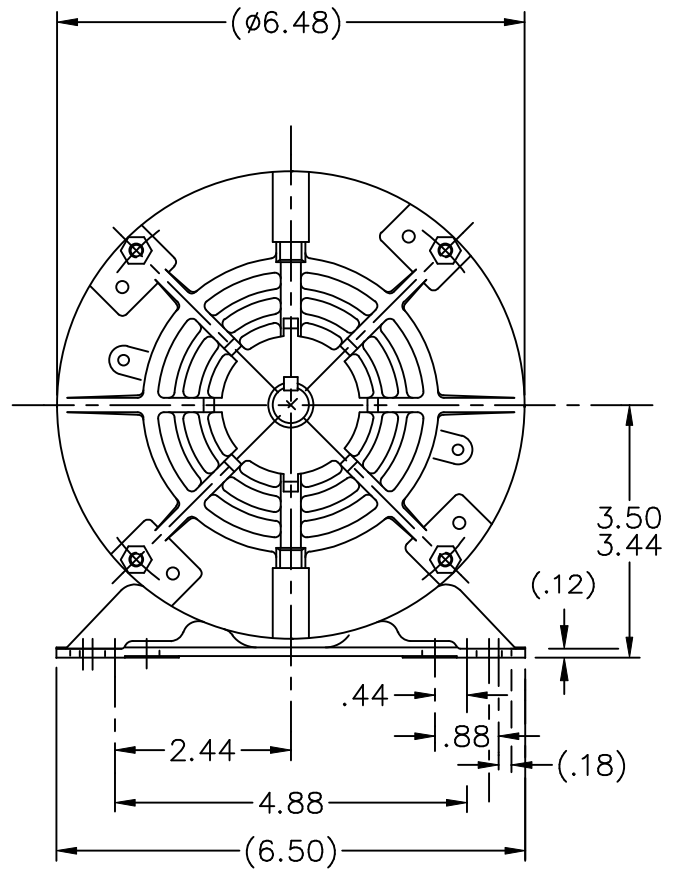
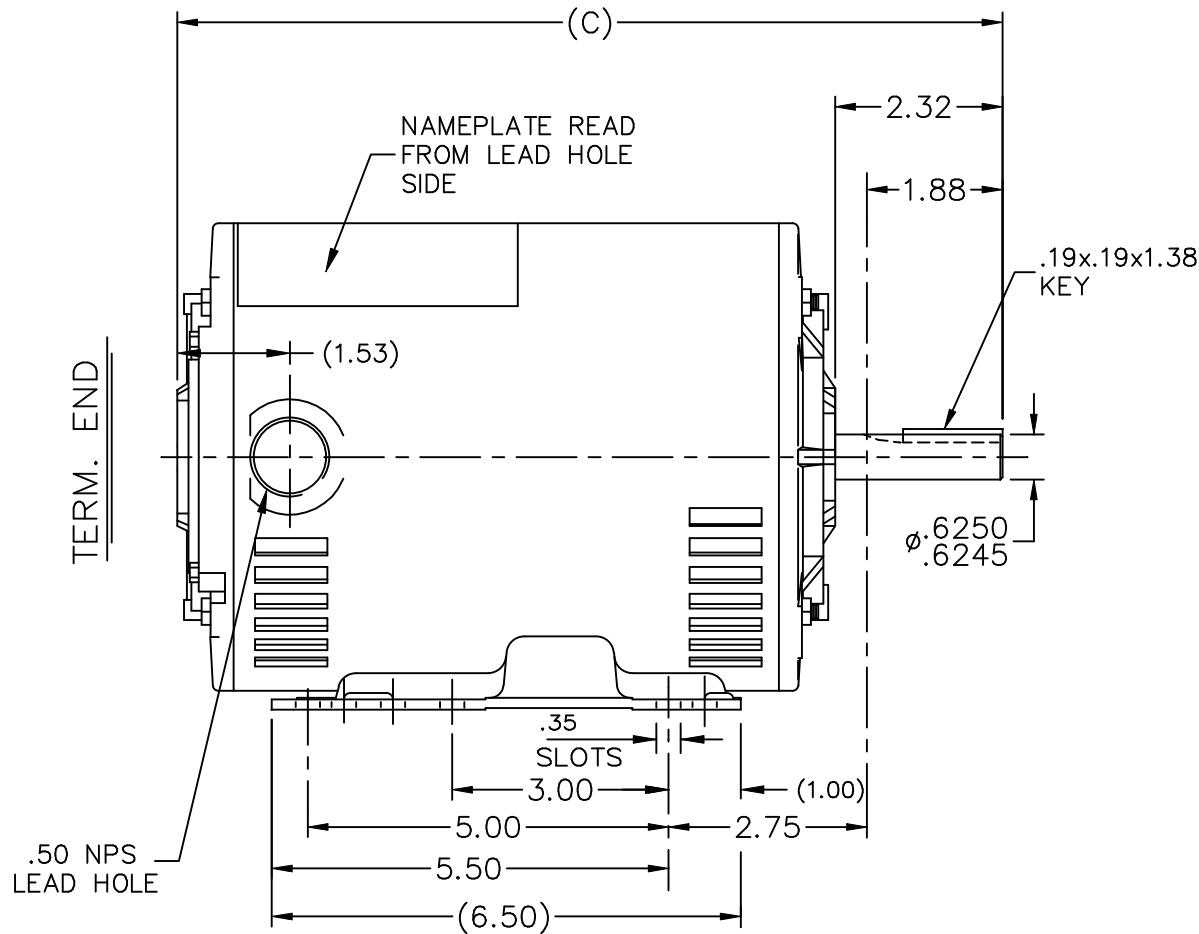
Nameplate Specifications

Output HP	1.5 Hp	Output KW	1.12 kW
Frequency	60 Hz	Voltage	575 V
Current	1.9 A	Speed	1725 rpm
Service Factor	1.15	Phase	3
Efficiency	80 %	Power Factor	74
Duty	CONTINUOUS	Insulation Class	B
Design Code	B	KVA Code	K
Frame	56H	Enclosure	DP
Thermal Protection	NOT	Ambient Temperature	40 °C
Drive End Bearing Size	6203	Opp Drive End Bearing Size	6203
UL	Recognized	CSA	Y
CE	Y	IP Code	22

Technical Specifications

Electrical Type	SQ CAGE IND RUN	Starting Method	ACROSS THE LINE
Poles	4	Rotation	REV
Resistance Main	12.1 Ohms	Mounting	RIGID
Motor Orientation	HORIZONTAL	Drive End Bearing	BALL
Opp Drive End Bearing	BALL	Frame Material	ROLLED STEEL
Shaft Type	T	Overall Length	10.94 in
Frame Length	7.06 in	Shaft Diameter	0.63 in
Shaft Extension	2.32 in	Assembly/Box Mounting	F1 Only

This is an uncontrolled document once printed or downloaded and is subject to change without notice. Date Created:01/11/2019



DASH	FR.	C			DASH	FR.	C		
656	56-65	10.44			856	56-85	12.44		
706	56-70	10.94			906	56-90	12.94		
756	56-75	11.44							

NO.	REVISION	BY & DATE	CHK	TOLERANCES UNLESS SPECIFIED	
				DEC.	INCHES
7	REDRAWN IN AUTOCAD	TAT 06-29-2004	ML	.X	±.1
6	RE-ISSUE ADD SHAFT END VIEW	PGK 02-06-1997		.XX	±.03
5	REVISED DIM. 1.88 WAS 2.29 CN 23925-76	PGK 01-31-1997		.XXX	±.005
4	REDRAWN ON CADD	PGK 01-15-1997		.XXXX	±.0005
				ANG	±7'30"

MARATHON ELECTRIC

TITLE OUTLINE
56 FR. - DR. PR. - BB - 3ø - 56H

MAT'L.
FINISH

DRAWN	PGK 12-16-1996
CHK	ML 01-15-1997
APPD	GK 01-15-1997
SCALE	3=8
REF	
FMF	
PREV	

THIS DRAWING IN DESIGN AND DETAIL IS OUR PROPERTY AND MUST NOT BE USED EXCEPT IN CONNECTION WITH OUR WORK ALL RIGHTS OF DESIGN AND INVENTION ARE RESERVED THIS IS AN ELECTRONICALLY GENERATED DOCUMENT - DO NOT SCALE THIS PRINT	RFP	CAD FILE 100095	SIZE	DRAWING NO. 100095	PAGE OF	REV. 7
	DIST WP		A			

**THREE PHASE - SINGLE VOLTAGE
MOTOR - CONDUIT BOX @ 'A'**

**TO REVERSE ROTATION:
INTERCHANGE ANY TWO
LINE LEAD CONNECTIONS.**

TERMINAL BLOCK WHEN SPECIFIED



VIEW OF TERMINAL END

**IF MOTOR HAS
6 LEADS**



A-9806 DECAL

**OPTIONAL CORD
CONNECTION**

- L1 _____ WHITE
- L2 _____ RED
- L3 _____ BLACK

DRAWING REVISION AB		REVISION BY JJB		DATE 06-27-2017		Regal Beloit America, Inc.					
ECO ECO-0125361		APPROVED BY TB		DATE 06-27-2017							
ECO DESCRIPTION UPDATED TO CURRENT STANDARDS						DESCRIPTION CONNECTION DIAGRAM					
<small>COPYRIGHT REGAL BELOIT AMERICA, INC. ALL RIGHTS RESERVED. PROPRIETARY AND CONFIDENTIAL INFORMATION - THIS DOCUMENT IS THE PROPERTY OF REGAL BELOIT AMERICA, INC. ("OWNER") AND CONTAINS OWNER'S PROPRIETARY INFORMATION. ANY PERSON, CORPORATION OR OTHER FIRM RECEIVING IT IS DEEMED, BY RECEIVING IT, TO AGREE THAT IT, AND/OR ANY PART OF IT, SHALL NOT BE DISCLOSED TO ANY PERSON, CORPORATION OR OTHER ENTITY, DUPLICATED, AND/OR USED, EXCEPT AS EXPRESSLY APPROVED IN WRITING IN ADVANCE BY OWNER. THIS DOCUMENT SHALL BE RETURNED TO OWNER UPON REQUEST. IT MAY BE SUBJECT TO CERTAIN RESTRICTIONS UNDER APPLICABLE EXPORT CONTROL LAWS AND REGULATIONS.</small>						EXTERNAL - SINGLE VOLTAGE - 3Ø MOTOR					
						THIRD ANGLE PROJECTION		MATERIAL		PROCESS/FINISH	
						SIZE A		DRAWING NUMBER EE7300		SHEET 1 OF 1	

CERTIFICATION DATA SHEET

Model#: 56T17D5369 B WINDING#: ZT416 NONE 2
CONN. DIAGRAM: A-EE7300 ASSEMBLY: F1 ONLY
OUTLINE: A-100095-706

TYPICAL MOTOR PERFORMANCE DATA

Table with 8 columns: HP, KW, SYNC. RPM, F.L. RPM, FRAME, ENCLOSURE, KVA CODE, DESIGN.
Table with 10 columns: PH, Hz, VOLTS, FL AMPS, START TYPE, DUTY, INSL, S.F, AMB°C, ELEVATION.
Table with 6 columns: FULL LOAD EFF: 80, 3/4 LOAD EFF: 80, 1/2 LOAD EFF: 77.5, GTD. EFF, ELEC. TYPE, NO LOAD AMPS.
Table with 5 columns: F.L. TORQUE, LOCKED ROTOR AMPS, L.R. TORQUE, B.D. TORQUE, F.L. RISE°C.
Table with 7 columns: SOUND PRESSURE @ 3 FT., SOUND POWER, ROTOR WK^2, MAX. WK^2, SAFE STALL TIME, STARTS /HOUR, APPROX. MOTOR WGT.

*** SUPPLEMENTAL INFORMATION ***

Table with 9 columns: DE BRACKET TYPE, ODE BRACKET TYPE, MOUNT TYPE, ORIENTATION, SEVERE DUTY, HAZARDOUS LOCATION, DRIP COVER, SCREENS, PAINT.

Table with 8 columns: BEARINGS (DE, OPE), GREASE, SHAFT TYPE, SPECIAL DE, SPECIAL ODE, SHAFT MATERIAL, FRAME MATERIAL.

Table with 7 columns: THERMO-PROTECTORS (THERMOSTATS, PROTECTORS, WDG RTDs, BRG RTDs), THERMISTORS, CONTROL, SPACE /n HEATERS.

If Inverter equals NONE, contact factory for further information

*
N
O
T
E
S
*

Table with 4 rows of specification data: INVERTER TORQUE: NONE, INV. HP SPEED RANGE: NONE, ENCODER: NONE, BRAKE: NONE NONE, NONE P/N NONE, NONE NONE, NONE FT-LB NONE V NONE Hz.

DATE: 06/28/2017 06:46:01 AM
FORM 3531 REV.3 02/07/99
** Subject to change without notice.

Data Sheet



56T17D5399

Date: 12/14/2018
 Customer:
 Attention:
 Submitted by: FAREEDA DUDEKULA

Submital
 Data @ 575 V

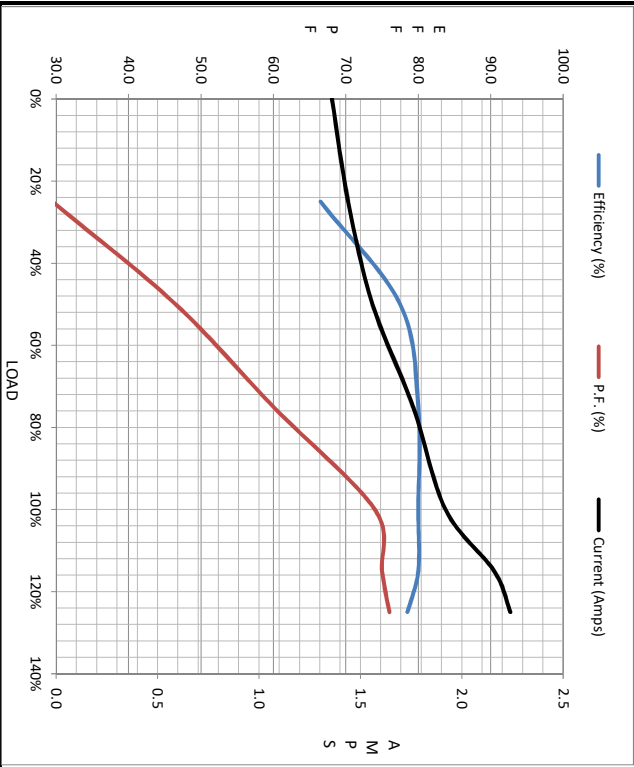
Load	0%	25%	50%	75%	100%	115%	125%	LR
Current (Amps)	1.36	1.44	1.56	1.76	1.92	2.16	2.24	14.0
Torque (ft-lb)	0.00	1.10	2.20	3.4	4.5	5.2	5.7	14.5
RPM	1800	1780	1770	1755	1735	1,730	1725	0
Efficiency (%)		66.5	77.5	80.0	80.0	80.0	78.5	
P.F. (%)	10.5	29.5	46.5	60.0	74.0	75.0	76.0	72.0

Motor Speed Data

	LR	Pull-Up	BD	Rated	Idle
Speed (RPM)	0	600	1215	1735	1800
Current (Amps)	14.0	12.8	9.6	1.92	1.36
Torque (ft-lb)	14.5	14.5	18.2	4.5	0.00

Information Block

HP	1.5			
Sync. RPM	1800			
Frame	56			
Enclosure	DP			
Construction	TS			
Voltage	575 V			
Frequency	60 Hz			
Design	B			
LR Code letter	K			
Service Factor	1.15			
Temp Rise @ FL	58 °C			
Duty	CONT			
Ambient	40 °C			
Elevation	1,000 feet			
Motor/Shaft Wk ²	0.07 LB-Ft ²			
Ret Wdg	Z1416 NONE			
Sound Pressure @ 1M	56 dBA			
VFD Rating	NONE			
Outline Dwg	A-100095-706			
Conn. Diag	A-EE7300			
Additional Specifications:				
0				
0				
R1	R2	X1	X2	Xm
11.8130	8.8590	14.7660	11.8130	262.8280



Speed - Torque Curve

