

# PRODUCT INFORMATION PACKET

**marathon**<sup>®</sup>  
Motors

Model No: 056E17F2008  
Catalog No: Z666  
3/4,1750,TEFC,56C,DC/12  
Low Voltage



Regal and Marathon are trademarks of Regal Beloit Corporation or one of its affiliated companies.  
©2018 Regal Beloit Corporation, All Rights Reserved. MC017097E

**REGAL**<sup>®</sup>



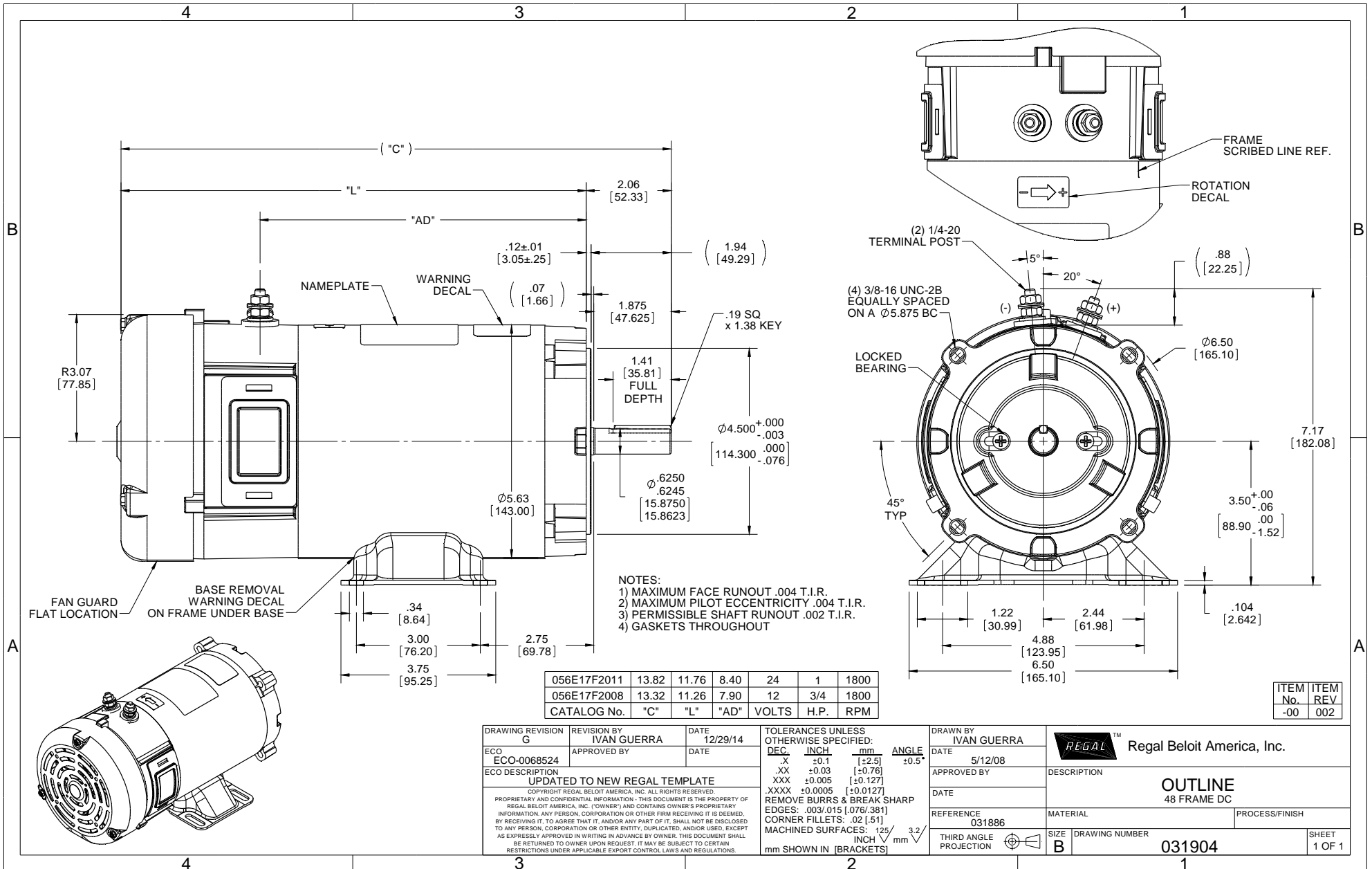
### Nameplate Specifications

Output HP	<b>0.75 Hp</b>	Output KW	<b>0.56 kW</b>
Voltage	<b>12 V</b>	Current	<b>58.0 A</b>
Speed	<b>1800 rpm</b>	Service Factor	<b>1</b>
Efficiency	<b>79.9 %</b>	Duty	<b>Continuous</b>
Insulation Class	<b>F</b>	Frame	<b>S56C</b>
Enclosure	<b>Totally Enclosed Fan Cooled</b>	Overload Protector	<b>No</b>
Ambient Temperature	<b>40 °C</b>	Drive End Bearing Size	<b>6203</b>
Opp Drive End Bearing Size	<b>6203</b>	UL	<b>Recognized</b>
CSA	<b>Y</b>	CE	<b>N</b>

### Technical Specifications

Rotation	<b>Reversible</b>	Mounting	<b>Rigid C base</b>
Frame Length	<b>5.97 in</b>	Shaft Diameter	<b>0.625 in</b>
Outline Drawing	<b>031904-597</b>		

**This is an uncontrolled document once printed or downloaded and is subject to change without notice. Date Created: 06/29/2018**



- NOTES:  
 1) MAXIMUM FACE RUNOUT .004 T.I.R.  
 2) MAXIMUM PILOT ECCENTRICITY .004 T.I.R.  
 3) PERMISSIBLE SHAFT RUNOUT .002 T.I.R.  
 4) GASKETS THROUGHOUT

056E17F2011	13.82	11.76	8.40	24	1	1800
056E17F2008	13.32	11.26	7.90	12	3/4	1800
CATALOG No.	"C"	"L"	"AD"	VOLTS	H.P.	RPM

ITEM No.	ITEM REV
-00	002

DRAWING REVISION G		REVISION BY IVAN GUERRA	DATE 12/29/14	TOLERANCES UNLESS OTHERWISE SPECIFIED:		DRAWN BY IVAN GUERRA		DATE 5/12/08		REGAL Regal Beloit America, Inc.	
ECO ECO-0068524		APPROVED BY	DATE	DEC	INCH	mm	ANGLE	APPROVED BY		DESCRIPTION	
ECO DESCRIPTION		UPDATED TO NEW REGAL TEMPLATE		.X	±0.1	[±2.5]	±0.5°	DATE		OUTLINE 48 FRAME DC	
<small>COPYRIGHT REGAL BELOIT AMERICA, INC. ALL RIGHTS RESERVED. PROPRIETARY AND CONFIDENTIAL INFORMATION - THIS DOCUMENT IS THE PROPERTY OF REGAL BELOIT AMERICA, INC. ("OWNER") AND CONTAINS OWNER'S PROPRIETARY INFORMATION. ANY PERSON, CORPORATION OR OTHER FIRM RECEIVING IT IS DEEMED, BY RECEIVING IT, TO AGREE THAT IT, AND/OR ANY PART OF IT, SHALL NOT BE DISCLOSED TO ANY PERSON, CORPORATION OR OTHER ENTITY, DUPLICATED, AND/OR USED, EXCEPT AS EXPRESSLY APPROVED IN WRITING IN ADVANCE BY OWNER. THIS DOCUMENT SHALL BE RETURNED TO OWNER UPON REQUEST. IT MAY BE SUBJECT TO CERTAIN RESTRICTIONS UNDER APPLICABLE EXPORT CONTROL LAWS AND REGULATIONS.</small>		REMOVE BURRS & BREAK SHARP EDGES: .003/.015 [076/381]		.XX	±0.03	[±0.76]		REFERENCE 031886		MATERIAL	
		CORNER FILLETS: .02 [51]		.XXX	±0.005	[±0.127]		THIRD ANGLE PROJECTION		PROCESS/FINISH	
		MACHINED SURFACES: 125/3.2		.XXXX	±0.0005	[±0.0127]		SIZE B		DRAWING NUMBER	
		mm SHOWN IN [BRACKETS]		EDGES: .003/.015 [076/381]				DRAWING NUMBER 031904		SHEET 1 OF 1	