

PRODUCT INFORMATION PACKET

marathon®
Motors

Model No: 056C34W5306
Catalog No: N556
1/3,3450,TEFC,56C,1/60/115/208-230
General Purpose



Regal and Marathon are trademarks of Regal Beloit Corporation or one of its affiliated companies.

©2018 Regal Beloit Corporation, All Rights Reserved. MC017097E

REGAL

Nameplate Specifications

Output HP	0.33 Hp	Output KW	0.25 kW
Frequency	60 Hz	Voltage	115/208-230 V
Current	5.2/2.7-2.6 A	Speed	3450 rpm
Service Factor	1.15	Phase	1
Efficiency	65 %	Duty	Continuous
Insulation Class	F	Design Code	N
KVA Code	L	Frame	56C
Enclosure	Totally Enclosed Fan Cooled	Overload Protector	No
Ambient Temperature	40 °C	Drive End Bearing Size	6205
Opp Drive End Bearing Size	6203	UL	Recognized
CSA	Y	CE	N
IP Code	55		

Technical Specifications

Electrical Type	Capacitor Start Induction Run	Starting Method	Across The Line
Poles	2	Rotation	Selective Counterclockwise
Mounting	Rigid base	Motor Orientation	HORIZONTAL
Drive End Bearing	BALL	Opp Drive End Bearing	BALL
Frame Material	Rolled Steel	Shaft Type	NEMA 56
Overall Length	10.16 in	Frame Length	4.50 in
Shaft Diameter	0.625 in	Shaft Extension	2.06 in
Assembly/Box Mounting	F1 ONLY		
Outline Drawing	028881ME-475B	Connection Diagram	00527807ME

This is an uncontrolled document once printed or downloaded and is subject to change without notice. Date Created: 10/30/2018

4

3

Uncontrolled Copy

2

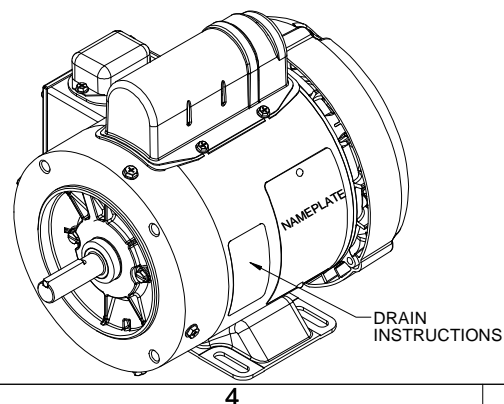
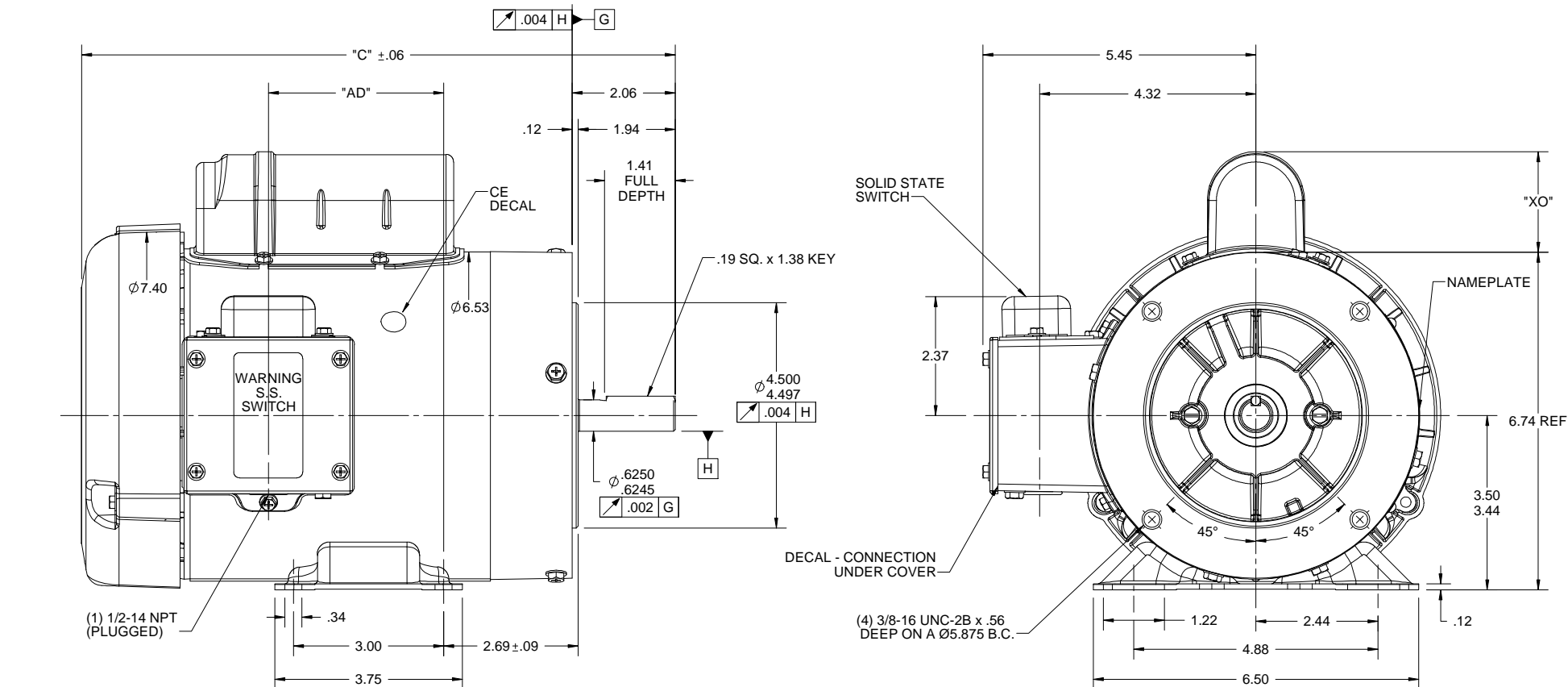
1

B

B

A

A



NOTES:

- 1) SHAFT SEALS & V-RING.
- 2) DRAIN HOLES IN ENDBELLS & CONDUIT BOX.
- 3) GASKETS THROUGHOUT.
- 4) STAINLESS STEEL SHAFT, HARDWARE, & NAMEPLATE

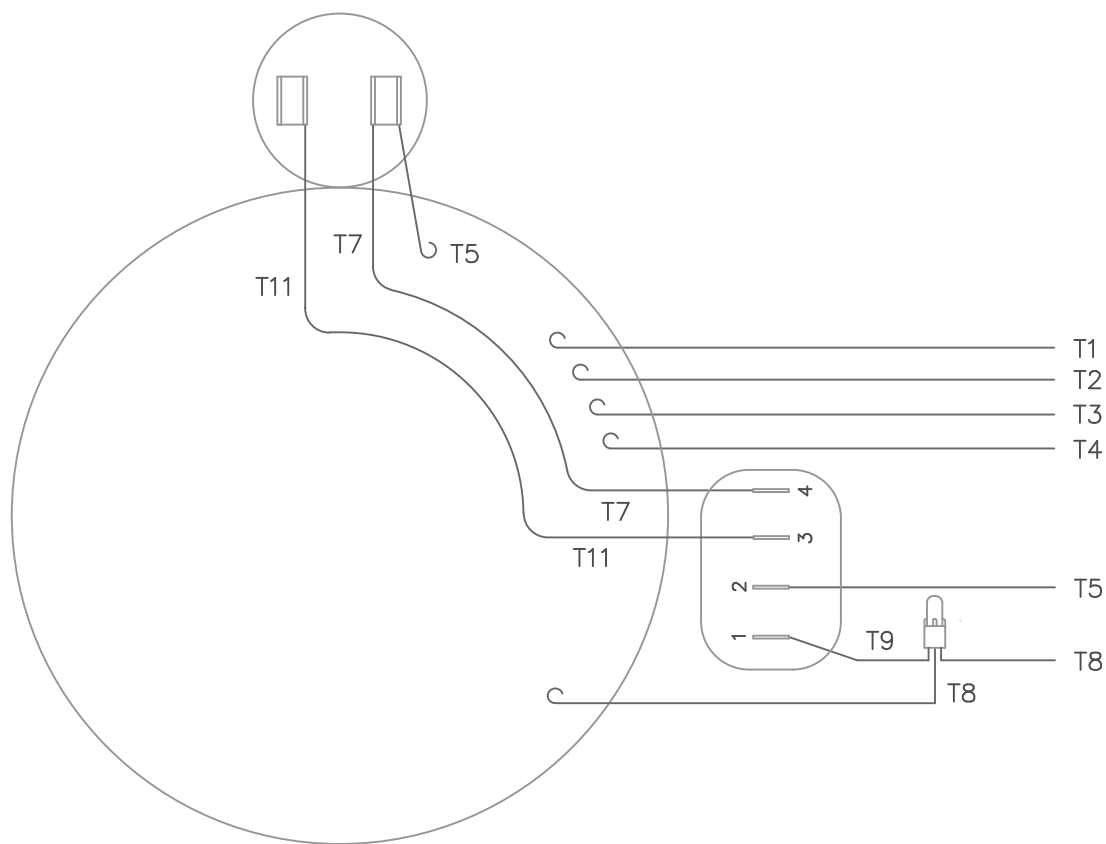
DRAWING REVISION	REVISION BY	DATE
C	AS	01/23/2018
ECO	APPROVED BY	DATE
ECO-0138365	AS	01/23/2018
ECO DESCRIPTION		
DASH # 575 ADDED		
COPYRIGHT REGAL BELOIT AMERICA, INC. ALL RIGHTS RESERVED. PROPRIETARY AND CONFIDENTIAL INFORMATION - THIS DOCUMENT IS THE PROPERTY OF REGAL BELOIT AMERICA, INC. (OWNER) AND CONTAINS OWNER'S PROPRIETARY INFORMATION. ANY PERSON, CORPORATION OR OTHER FIRM RECEIVING IT IS DEEMED, BY RECEIVING IT, TO AGREE THAT IT, AND/OR ANY PART OF IT, SHALL NOT BE DISCLOSED TO ANY PERSON, CORPORATION OR OTHER ENTITY, DUPLICATED, AND/OR USED, EXCEPT AS EXPRESSLY APPROVED IN WRITING IN ADVANCE BY OWNER. THIS DOCUMENT SHALL BE RETURNED TO OWNER UPON REQUEST. IT MAY BE SUBJECT TO CERTAIN RESTRICTIONS UNDER APPLICABLE EXPORT CONTROL LAWS AND REGULATIONS.		

TOLERANCES UNLESS OTHERWISE SPECIFIED:		
DEC.	INCH	mm
.X	±0.1	[±2.5]
.XX	±0.03	[±0.76]
.XXX	±0.005	[±0.127]
.XXXX	±0.0005	[±0.0127]
REMOVE BURRS & BREAK SHARP EDGES: .003/.015 [0.076/.381] X 45°		
CORNER FILLETS: R.02 [51]		
MACHINED SURFACES: 200 INCH 5.1 mm		
mm SHOWN IN [BRACKETS]		

DRAWN BY	DATE
RVD 02/26/2009	
APPROVED BY	DATE
RVD 02/26/2009	
REFERENCE	THIRD ANGLE PROJECTION
028881	

DASH NO.		"C"	"AD"		
450	10.16	2.00			
475	10.41	2.25			
500	10.66	2.50			
550	11.16	3.00			
575	11.41	3.25			
600	11.66	3.50			
650	12.16	4.00			
700	12.66	4.50			
750	13.16	5.00			
		CAP. DASH	"XO"		
		A	1.54		
		B	2.01		
		C	2.25		

DRAWING NUMBER		PROCESS/FINISH	SHEET
028881ME			1 OF 1



VIEW FROM OUTSIDE OF MOTOR AT SWITCH END.

LINE LEADS				
	ROTATION FACING LEAD END	L1	L2	JOIN & INSULATE
HIGH VOLT	C.C.W.	T1	T4 T5	T2,T3 T8
	C.W.	T1	T4 T8	T2,T3 T5
LOW VOLT	C.C.W.	T1,T3 T8	T2,T4 T5	
	C.W.	T1,T3 T5	T2,T4 T8	

		TOLERANCES UNLESS SPECIFIED									
		DEC.	INCHES								
		.X	±.1								
		.XX	±.01								
		.XXX	±.005								
		.XXXX	±.0005								
NO.	REVISION	BY & DATE	CHK	ANG	±1/2°						
						RFP		CAD FILE 00527807ME		SIZE A	
						DIST				DRAWING NO. 005278-07ME	
										PAGE OF	
										REV.	

THIS DRAWING IN DESIGN AND DETAIL IS OUR PROPERTY AND MUST NOT BE USED EXCEPT IN CONNECTION WITH OUR WORK. ALL RIGHTS OF DESIGN AND INVENTION ARE RESERVED. THIS IS AN ELECTRONICALLY GENERATED DOCUMENT - DO NOT SCALE THIS PRINT.

1/20/2009 5:28:05 PM

Dealers Industrial Equipment -- Visit <https://DealersElectric.com> or call (908) 688-1966 for all of your electric motor & VFD needs!