

# PRODUCT INFORMATION PACKET

**marathon**<sup>®</sup>  
Motors

Model No: 056C17D2102  
Catalog No: X602  
1/2,1800,DP,56Z,1/60/115/230  
Other Purpose



Regal and Marathon are trademarks of Regal Beloit Corporation or one of its affiliated companies.  
©2018 Regal Beloit Corporation, All Rights Reserved. MC017097E

**REGAL**<sup>®</sup>

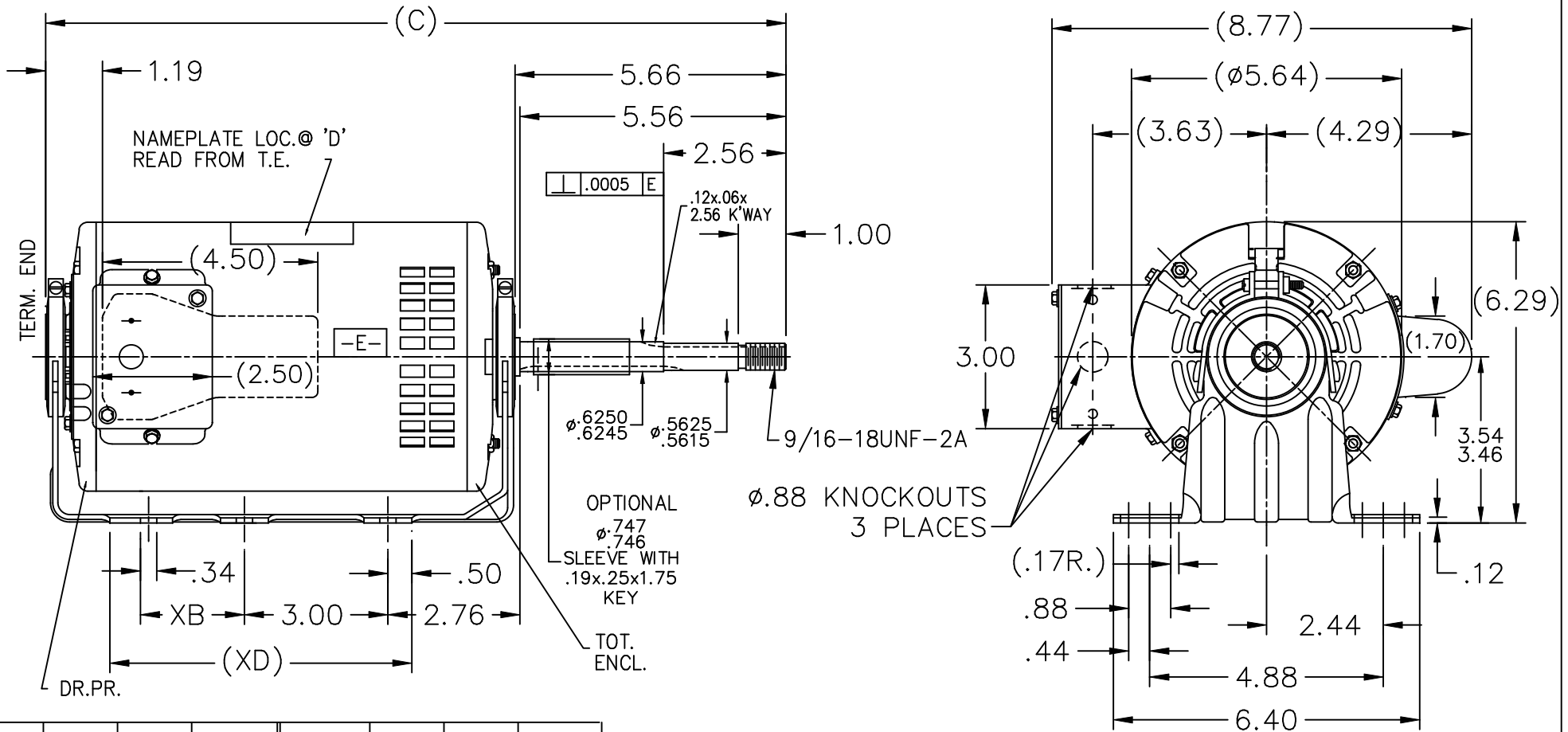
### Nameplate Specifications

|                            |                      |                        |                       |
|----------------------------|----------------------|------------------------|-----------------------|
| Output HP                  | <b>0.50 Hp</b>       | Output KW              | <b>0.37 kW</b>        |
| Frequency                  | <b>60 Hz</b>         | Voltage                | <b>115/208-230 V</b>  |
| Current                    | <b>8.0/4.0-4.0 A</b> | Speed                  | <b>1725 rpm</b>       |
| Service Factor             | <b>1.25</b>          | Phase                  | <b>1</b>              |
| Efficiency                 | <b>65 %</b>          | Duty                   | <b>Continuous</b>     |
| Insulation Class           | <b>B</b>             | Design Code            | <b>NO DESIGN CODE</b> |
| KVA Code                   | <b>E</b>             | Frame                  | <b>56Z</b>            |
| Enclosure                  | <b>Drip Proof</b>    | Overload Protector     | <b>Automatic</b>      |
| Ambient Temperature        | <b>40 °C</b>         | Drive End Bearing Size | <b>6203</b>           |
| Opp Drive End Bearing Size | <b>6203</b>          | UL                     | <b>Recognized</b>     |
| CSA                        | <b>Y</b>             | CE                     | <b>N</b>              |
| IP Code                    | <b>22</b>            |                        |                       |

### Technical Specifications

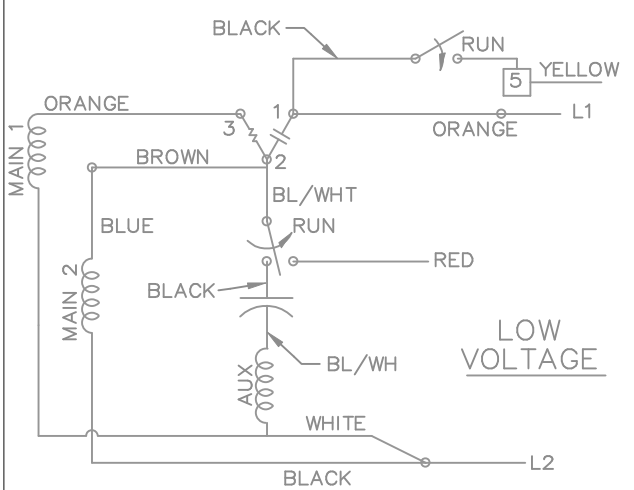
|                       |                                      |                       |                                 |
|-----------------------|--------------------------------------|-----------------------|---------------------------------|
| Electrical Type       | <b>Capacitor Start Induction Run</b> | Starting Method       | <b>Across The Line</b>          |
| Poles                 | <b>4</b>                             | Rotation              | <b>Fixed Counterclockwise</b>   |
| Mounting              | <b>Resilient Base</b>                | Motor Orientation     | <b>Horizontal</b>               |
| Drive End Bearing     | <b>Ball</b>                          | Opp Drive End Bearing | <b>Ball</b>                     |
| Frame Material        | <b>Rolled Steel</b>                  | Shaft Type            | <b>Single Special Extension</b> |
| Overall Length        | <b>15.41 in</b>                      | Frame Length          | <b>7.75 in</b>                  |
| Shaft Diameter        | <b>0.625 in</b>                      | Shaft Extension       | <b>5.66 in</b>                  |
| Assembly/Box Mounting | <b>F1 Only</b>                       |                       |                                 |
| Outline Drawing       | <b>A-SS400109-775</b>                | Connection Diagram    | <b>A-EE9104A</b>                |

**This is an uncontrolled document once printed or downloaded and is subject to change without notice. Date Created: 06/29/2018**

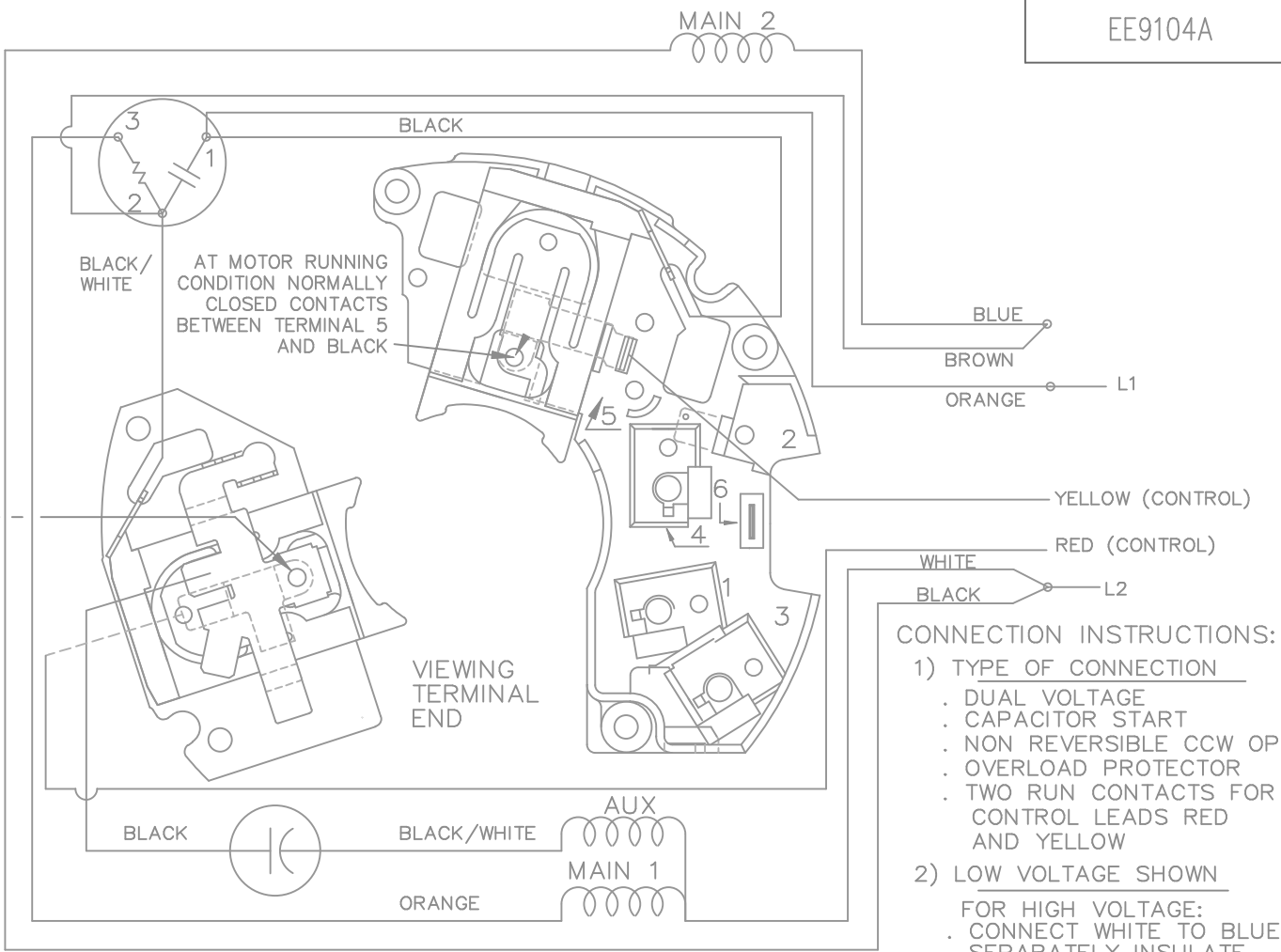
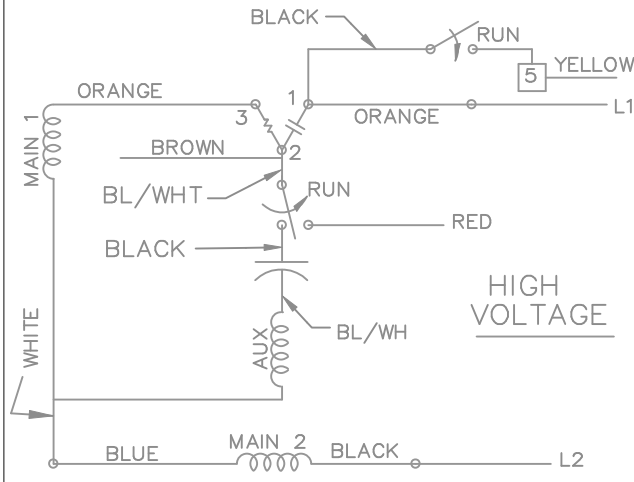


| DASH | XB   | XD   | C     | DASH | XB   | XD   | C     |
|------|------|------|-------|------|------|------|-------|
| 625  | 0    | 4.81 | 13.91 | 725  | 2.00 | 5.81 | 14.91 |
| 650  | 0    | 5.06 | 14.16 | 750  | 2.00 | 6.06 | 15.16 |
| 675  | 0    | 5.31 | 14.41 | 775  | 2.00 | 6.31 | 15.41 |
| 700  | 2.00 | 5.56 | 14.66 |      |      |      |       |

|  |   |                        |     | TOLERANCES UNLESS SPECIFIED |        |   | DRAWN MRB 04/24/1995 |          |             |       |      |      |
|--|---|------------------------|-----|-----------------------------|--------|---|----------------------|----------|-------------|-------|------|------|
|  |   |                        |     | DEC.                        | INCHES |   | CHK                  | ML       | 04/25/1995  |       |      |      |
| 4  | CHANGED CONDUIT BOX PER CN39440-6           | TJW                    |     | .X                          | ±.1    | <b>TITLE</b> OUTLINE 48/56 FR. RESILIENT BASE<br>SPL EXT. STOCK LAUNDRY MOTOR | APPD                 | GK       | 04/25/1995  | SCALE | 5=16 |      |
| 3  | CHANGED C'BOX PER CN39440-5                 | TJW 9/5/2006           | ML  | .XX                         | ±.03   |   | REF                  | SS73788  |             |       |      |      |
| 2  | REVISED ODE BRACKET AND SHAFT EXT. CN 37313 | RDH 12-08-2003         | JET | .XXX                        | ±.005  |   | FMF                  | CN 37313 |             |       |      |      |
| 1  | NEW DRAWING                                 | 4274145 MRB 05/01/1995 | ML  | .XXXX                       | ±.0005 |   | PREV                 |          |             |       |      |      |
| NO.  | REVISION                                    | BY & DATE              | CHK | ANG                         | ±7'30" |   |                      |          |             |       |      |      |
| THIS DRAWING IN DESIGN AND DETAIL IS OUR PROPERTY AND MUST NOT BE USED EXCEPT IN CONNECTION WITH OUR WORK ALL RIGHTS OF DESIGN AND INVENTION ARE RESERVED THIS IS AN ELECTRONICALLY GENERATED DOCUMENT - DO NOT SCALE THIS PRINT |   |                        |     | RFP                         |        | CAD FILE  | ss400109             | SIZE     | DRAWING NO. | PAGE  | OF   | REV. |
|  |   |                        |     | DIST                        | WP     | A   | SS400109             |          |             |       |      | 4    |



AT MOTOR RUNNING CONDITION CONTACTS ARE:  
 . NORMALLY CLOSED BETWEEN PROTECTOR AND RED JUMPER  
 . NORMALLY OPEN BETWEEN PROTECTOR AND CAPACITOR



**CCW ROTATION—LEAD END**

NOTE:  
 DASH LINES INDICATE LEADS CONNECTED TO MOTOR SIDE OF SWITCH.

- CONNECTION INSTRUCTIONS:**
- 1) TYPE OF CONNECTION**
    - . DUAL VOLTAGE
    - . CAPACITOR START
    - . NON REVERSIBLE CCW OPE
    - . OVERLOAD PROTECTOR
    - . TWO RUN CONTACTS FOR CONTROL LEADS RED AND YELLOW
  - 2) LOW VOLTAGE SHOWN**

FOR HIGH VOLTAGE:

    - . CONNECT WHITE TO BLUE
    - . SEPARATELY INSULATE BROWN
  - 3) CAUTION**
    - . LINE VOLTAGE APPEARS BETWEEN L2 AND YELLOW AND RED LEADS WHEN MOTOR IS AT RUNNING SPEED

|  |   |                |     | TOLERANCES UNLESS SPECIFIED |                  | REGAL-BELOIT <i>Motor Technologies Group</i>                        | DRAWN MKLEIST 09-22-03 |             |          |       |      |
|--|---|----------------|-----|-----------------------------|------------------|---|------------------------|-------------|----------|-------|------|
|  |   |                |     | DEC.                        | INCHES           |   | CHK                    | ML          | 09-25-03 |       |      |
|  |   |                |     | .X                          | ±.1              |   | APPD                   | DN          | 09-25-03 | SCALE | 1=1  |
|  |   |                |     | .XX                         | ±.02             |   | REF                    |             |          |       |      |
| 2  | REVISED TO MATCH WINDING DIAGRAM CN 37313 | RDH 12-18-2003 | JET | .XXX                        | ±.005            | TITLE CONNECTION DIAGRAM 48 FRAME DUAL VOLTAGE (REPLACES A-EE9061J) |                        |             |          | FMF   |      |
| 1  | NEW DRAWING                               | MJK 09/22/2003 |     | .XXXX                       | ±.0005           | MAT'L.  |                        |             |          | PREV  |      |
| NO.  | REVISION                                  | BY & DATE      | CHK | ANG                         | ±                | FINISH  |                        |             |          |       |      |
| THIS DRAWING IN DESIGN AND DETAIL IS OUR PROPERTY AND MUST NOT BE USED EXCEPT IN CONNECTION WITH OUR WORK ALL RIGHTS OF DESIGN AND INVENTION ARE RESERVED THIS IS AN ELECTRONICALLY GENERATED DOCUMENT - DO NOT SCALE THIS PRINT |   |                |     | RFP                         | CAD FILE ee9104a |   | SIZE                   | DRAWING NO. | PAGE     | OF    | REV. |
|  |   |                |     | DIST                        |                  |   | A                      | EE9104A     |          | 2     |      |

**CERTIFICATION DATA SHEET**

**Model#:** 56C17D2102 L      **WINDING#:** CE4845 NONE 3  
**CONN. DIAGRAM:** A-EE9104A      **ASSEMBLY:** F1 ONLY  
**OUTLINE:** A-SS400109-775

**TYPICAL MOTOR PERFORMANCE DATA**

| HP  | KW  | SYNC. RPM | F.L. RPM | FRAME | ENCLOSURE | KVA CODE | DESIGN         |
|-----|-----|-----------|----------|-------|-----------|----------|----------------|
| 1/2 | .37 | 1800      | 1725     | 56Z   | DP        | E        | NO DESIGN CODE |

| PH | Hz | VOLTS       | FL AMPS | START TYPE      | DUTY       | INSL | S.F  | AMB°C | ELEVATION |
|----|----|-------------|---------|-----------------|------------|------|------|-------|-----------|
| 1  | 60 | 115/208-230 | 8/4-4   | ACROSS THE LINE | CONTINUOUS | B3   | 1.25 | 40    | 3300      |

| FULL LOAD EFF: 65.0 | 3/4 LOAD EFF: - | 1/2 LOAD EFF: - | GTD. EFF | ELEC. TYPE        | NO LOAD AMPS |
|---------------------|-----------------|-----------------|----------|-------------------|--------------|
|                     |                 |                 | -        | CAP START IND RUN | 5.6 / 2.8    |

| F.L. TORQUE | LOCKED ROTOR AMPS | L.R. TORQUE  | B.D. TORQUE  | F.L. RISE°C |
|-------------|-------------------|--------------|--------------|-------------|
| 24.3 LB-FT  | 30.6 / 15.3       | 44.1 LB-FT - | 57.5 LB-FT - | -           |

| SOUND PRESSURE @ 3 FT. | SOUND POWER | ROTOR WK^2 | MAX. WK^2 | SAFE STALL TIME | STARTS /HOUR | APPROX. MOTOR WGT |
|------------------------|-------------|------------|-----------|-----------------|--------------|-------------------|
| - dBA                  | - dBA       | - LB-FT^2  | - LB-FT^2 | - SEC.          | -            | - LBS.            |

**\*\*\* SUPPLEMENTAL INFORMATION \*\*\***

| DE BRACKET TYPE | ODE BRACKET TYPE | MOUNT TYPE     | ORIENTATION | SEVERE DUTY | HAZARDOUS LOCATION | DRIP COVER | SCREENS | PAINT         |
|-----------------|------------------|----------------|-------------|-------------|--------------------|------------|---------|---------------|
| STANDARD        | STANDARD         | RESILIENT BASE | HORIZONTAL  | FALSE       | NONE               | FALSE      | NONE    | GRAY (POWDER) |

| BEARINGS |      | GREASE      | SHAFT TYPE  | SPECIAL DE                    | SPECIAL ODE | SHAFT MATERIAL           | FRAME MATERIAL |
|----------|------|-------------|-------------|-------------------------------|-------------|--------------------------|----------------|
| DE       | OPE  | MULTEMP SRL | SGL SPL EXT | LAUNDRY MOTOR EXT WITH THREAD | NONE        | 1144 STRESSPROOF (C-223) | ROLLED STEEL   |
| BALL     | BALL |             |             |                               |             |                          |                |
| 6203     | 6203 |             |             |                               |             |                          |                |

| THERMO-PROTECTORS |            |          |          | THERMISTORS | CONTROL | SPACE /n HEATERS |
|-------------------|------------|----------|----------|-------------|---------|------------------|
| THERMOSTATS       | PROTECTORS | WDG RTDs | BRG RTDs |             |         |                  |
| NONE              | AUTOMATIC  | NONE     | NONE     | NONE        | FALSE   | NONE VOLTS       |

If Inverter equals NONE, contact factory for further information

|                           |
|---------------------------|
| INVERTER TORQUE: NONE     |
| INV. HP SPEED RANGE: NONE |
| ENCODER: NONE             |
| NONE NONE                 |
| NONE NONE PPR             |
| BRAKE: NONE NONE          |
| NONE P/N NONE             |
| NONE NONE                 |
| NONE FT-LB NONE V NONE Hz |

\*  
N  
O  
T  
E  
S  
\*

DATE: 06/21/2017 09:21:09 AM  
 FORM 3531 REV.3 02/07/99  
 \*\* Subject to change without notice.