

# PRODUCT INFORMATION PACKET

**marathon**<sup>®</sup>  
Motors

Model No: 056B17D67  
Catalog No: B353  
1/2,1725,DP,56Y,1/60/115/208-230  
Fan and Blower



Regal and Marathon are trademarks of Regal Beloit Corporation or one of its affiliated companies.

©2018 Regal Beloit Corporation, All Rights Reserved. MC017097E

**REGAL**<sup>®</sup>



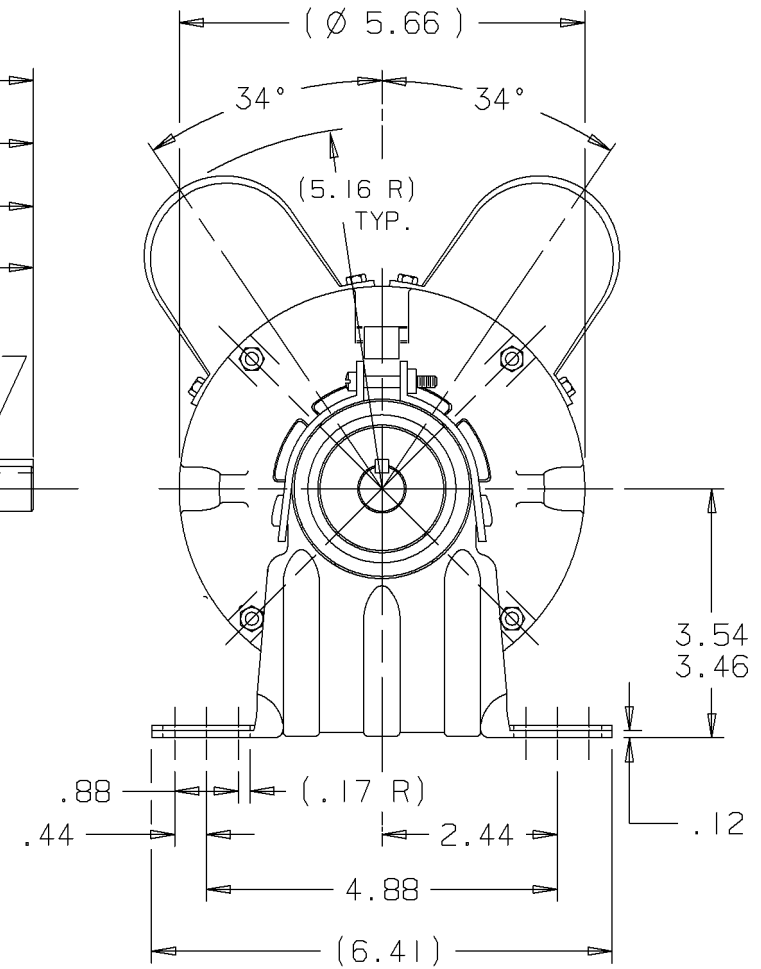
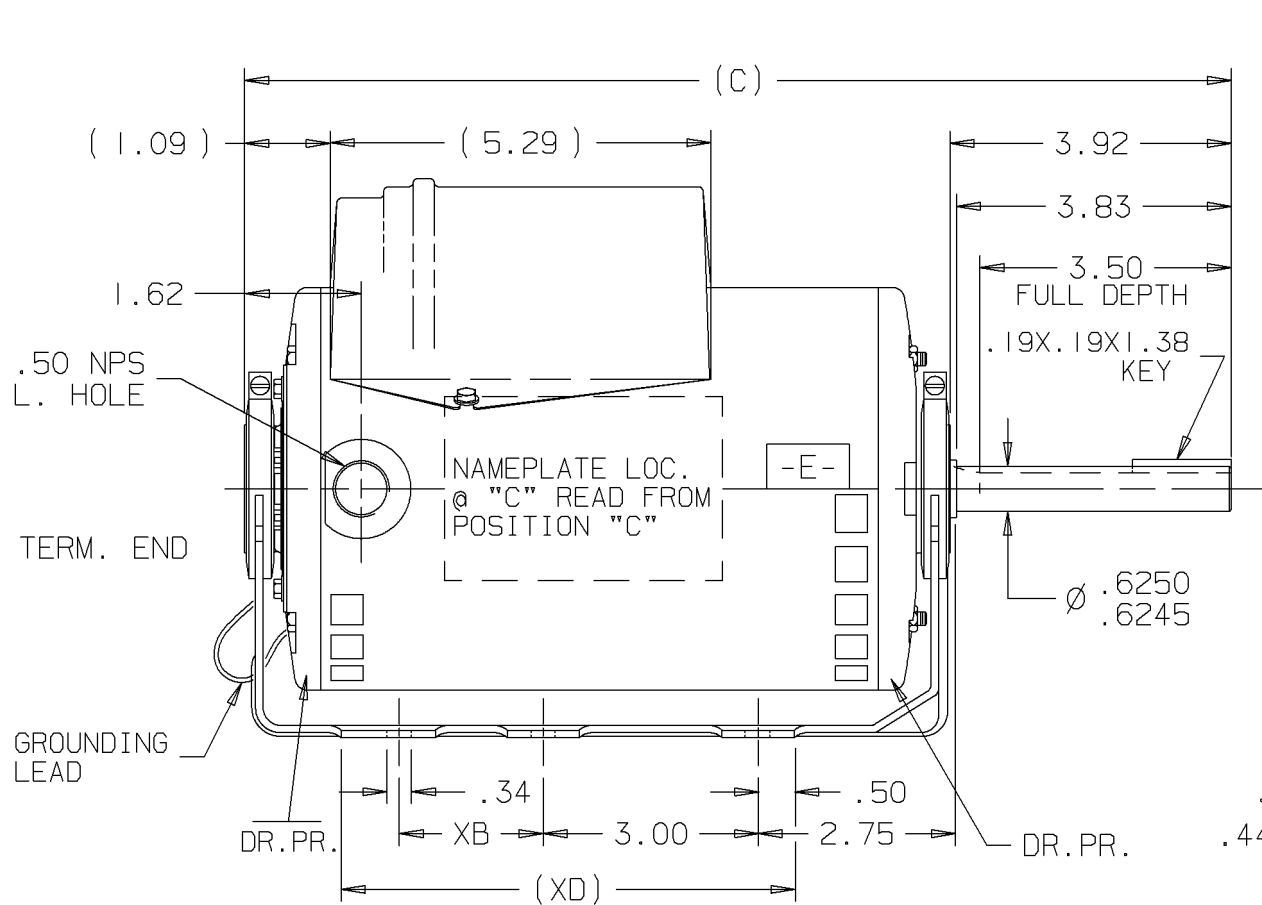
### Nameplate Specifications

Output HP	<b>0.50 Hp</b>	Output KW	<b>0.37 kW</b>
Frequency	<b>60 Hz</b>	Voltage	<b>115/208-230 V</b>
Current	<b>6.2/3.0-3.1 A</b>	Speed	<b>1725 rpm</b>
Service Factor	<b>1.25</b>	Phase	<b>1</b>
Efficiency	<b>74 %</b>	Duty	<b>Continuous</b>
Insulation Class	<b>B</b>	Design Code	<b>L</b>
KVA Code	<b>L</b>	Frame	<b>56Y</b>
Enclosure	<b>Drip Proof</b>	Overload Protector	<b>Automatic</b>
Ambient Temperature	<b>60 °C</b>	Drive End Bearing Size	<b>6203</b>
Opp Drive End Bearing Size	<b>6203</b>	UL	<b>Recognized</b>
CSA	<b>Y</b>	CE	<b>Y</b>
IP Code	<b>12</b>		

### Technical Specifications

Electrical Type	<b>Capacitor Start Capacitor Run</b>	Starting Method	<b>Across The Line</b>
Poles	<b>4</b>	Rotation	<b>Fixed Counterclockwise</b>
Mounting	<b>Resilient Base</b>	Motor Orientation	<b>Horizontal</b>
Drive End Bearing	<b>Ball</b>	Opp Drive End Bearing	<b>Ball</b>
Frame Material	<b>Rolled Steel</b>	Shaft Type	<b>Single Special Extension</b>
Overall Length	<b>12.92 in</b>	Frame Length	<b>7.00 in</b>
Shaft Diameter	<b>0.625 in</b>	Shaft Extension	<b>3.92 in</b>
Assembly/Box Mounting	<b>F1 Only</b>		
Outline Drawing	<b>A-SS74120-700</b>	Connection Diagram	<b>A-EE9006</b>

This is an uncontrolled document once printed or downloaded and is subject to change without notice. Date Created: 06/29/2018

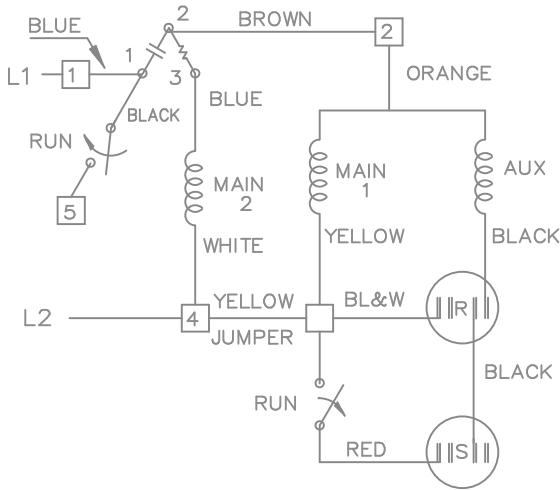


DASH	XB	XD	C	DASH	XB	XD	C
700	2.00	5.50	12.92				

				<input checked="" type="checkbox"/> MAX. SURFACE ROUGHNESS UNLESS NOTED OTHERWISE		UNLESS OTHERWISE SPECIFIED DIMENSIONS ARE IN INCHES TOL. ON XX±.03 XXX±.005 XXXX±.0005 ANGLES± 7'30"			
				MATL SPEC				DRAWN BY SMC 03-22-1991	
				FINISH				CHKD BY ML 03-26-1991	
2		03-22-1991		REDRAWN ON CADD		SMC		APPD BY GK 03-26-1991	
REV		DATE		CHANGE		NAME		DRWG NO A- SS74120	

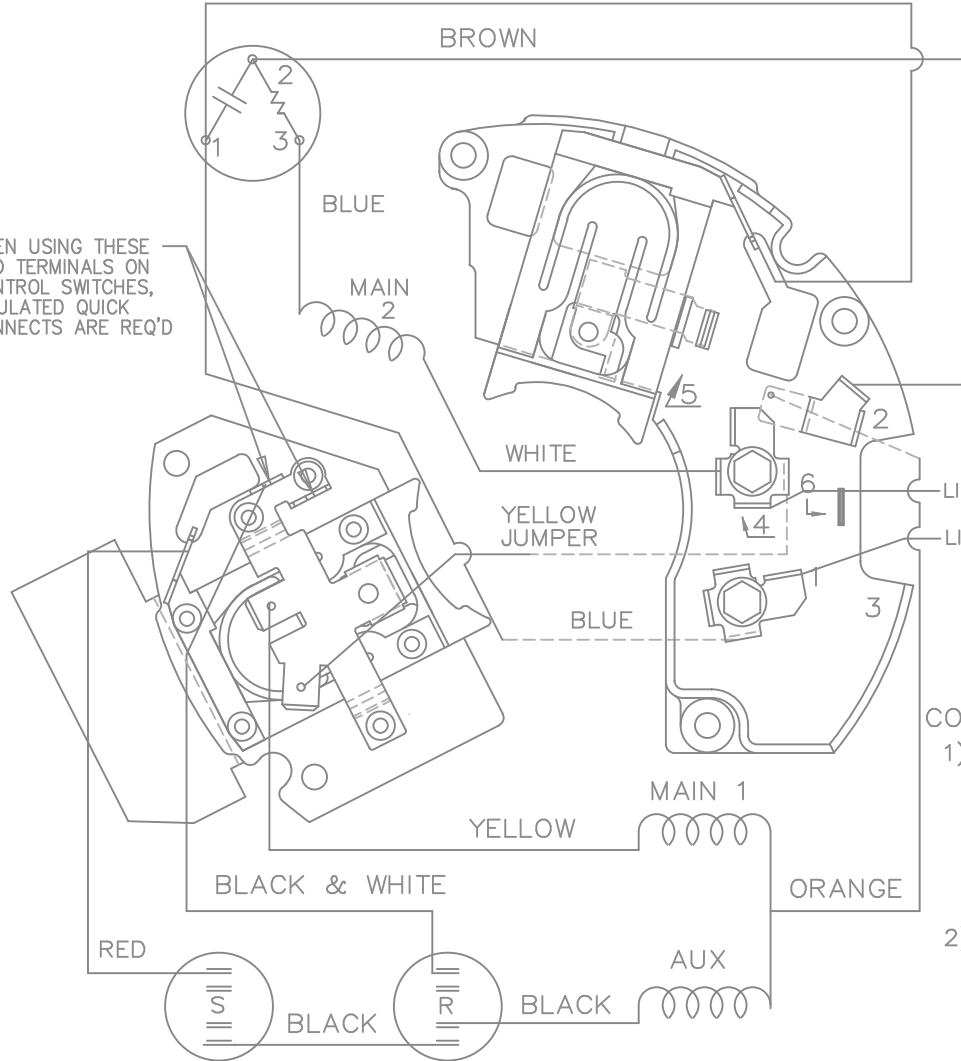
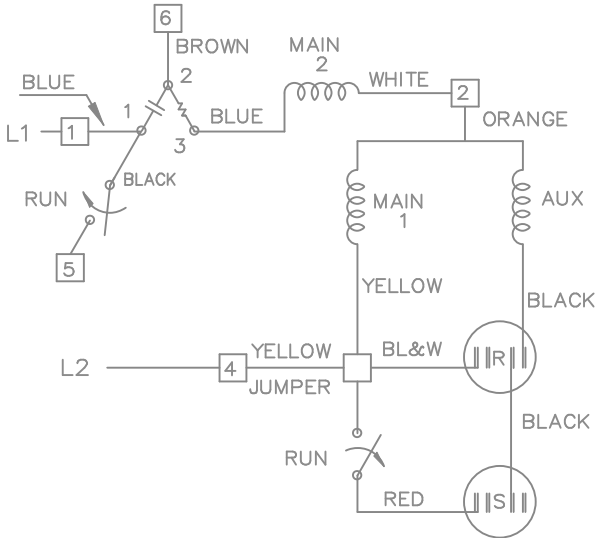
SHOP BOOK | PURCHASED | DISTRIBUTION - WA - LB - WP - LM - BR | CADD FILE NO. | SS74120

LOW VOLTAGE



WHEN USING THESE TWO TERMINALS ON CONTROL SWITCHES, INSULATED QUICK CONNECTS ARE REQ'D

HIGH VOLTAGE



VIEWING TERM END

LINE 2 ○ RESERVE THESE TERMINALS AND SCREWS FOR CUSTOMER LINE CONN'S.  
LINE 1 ○

- CONNECTION INSTRUCTIONS:
- 1) TYPE OF CONNECTION
    - . DUAL VOLTAGE
    - . CAP START/CAP RUN
    - . NON REVERSIBLE CCW OPE
    - . OVERLOAD PROTECTOR
    - . RUN CONTACT AT TERM 5
  - 2) LOW VOLTAGE SHOWN
    - . FOR HIGH VOLTAGE PLACE BROWN TERM 2 TO TERM 6 AND WHITE TERM 4 TO TERM 2
  - 3) DASH LINES INDICATE LEADS CONNECTED TO MOTOR SIDE OF SWITCH

5	BLACK & WHITE SWITCH LEAD WAS BLACK			TOLERANCES UNLESS SPECIFIED			DRAWN ML 02-12-1988			
	CN 29400-872	DRS 06-20-2002	TOM	DEC.	INCHES		CHK FG 01-12-1988			
4	REVISED STATIONARY SWITCH ASSEMBLY CN 25822	MJD 06-22-1998		.X	± -		APPD DRN 03-07-1988			
3	WHITE TERM 2 WAS TERM 1	DD 04-16-1993		.XX	± -		SCALE 1=1			
2	ADDED CUSTOMER CONN. NOTE CN 6011	BW 08-03-1989		.XXX	± -		REF			
1	NEW DRAWING	ML 02-12-1988		.XXXX	± -	MAT'L	FMF			
NO.	REVISION	BY & DATE	CHK	ANG	± -	FINISH	PREV			
THIS DRAWING IN DESIGN AND DETAIL IS OUR PROPERTY AND MUST NOT BE USED EXCEPT IN CONNECTION WITH OUR WORK ALL RIGHTS OF DESIGN AND INVENTION ARE RESERVED THIS IS AN ELECTRONICALLY GENERATED DOCUMENT - DO NOT SCALE THIS PRINT			RFP	CAD FILE EE9006			SIZE A	DRAWING NO. EE9006	PAGE OF	REV. 5
			DIST	WP						

CERTIFICATION DATA SHEET

Model#: 56B17D67 H WINDING#: BE48413 NONE 3  
 CONN. DIAGRAM: A-EE9006 ASSEMBLY: F1 ONLY  
 OUTLINE: A-SS74120-700

TYPICAL MOTOR PERFORMANCE DATA

HP	KW	SYNC. RPM	F.L. RPM	FRAME	ENCLOSURE	KVA CODE	DESIGN
1/2	0.37	1800	1725	56Y	DP	L	L

PH	Hz	VOLTS	FL AMPS	START TYPE	DUTY	INSL	S.F	AMB°C	ELEVATION
1	60	115/208-230	6.2/3-3.1	ACROSS THE LINE	CONTINUOUS	B3	1.25	60	3300

FULL LOAD EFF: 74	3/4 LOAD EFF: 68	1/2 LOAD EFF: 59	GTD. EFF	ELEC. TYPE	NO LOAD AMPS
FULL LOAD PF: 72	3/4 LOAD PF: 62.5	1/2 LOAD PF: 50	-	CAP START CAP RUN	4 / 2

F.L. TORQUE	LOCKED ROTOR AMPS	L.R. TORQUE	B.D. TORQUE	F.L. RISE°C
24.3 LB-FT	43.6 / 21.8	98.2 LB-FT	70.7 LB-FT	-

SOUND PRESSURE @ 3 FT.	SOUND POWER	ROTOR WK^2	MAX. WK^2	SAFE STALL TIME	STARTS /HOUR	APPROX. MOTOR WGT
- dBA	- dBA	- LB-FT^2	- LB-FT^2	- SEC.	-	- LBS.

\*\*\* SUPPLEMENTAL INFORMATION \*\*\*

DE BRACKET TYPE	ODE BRACKET TYPE	MOUNT TYPE	ORIENTATION	SEVERE DUTY	HAZARDOUS LOCATION	DRIP COVER	SCREENS	PAINT
STANDARD	STANDARD	RESILIENT BASE	HORIZONTAL	FALSE	NONE	FALSE	NONE	GRAY (POWDER)

BEARINGS		GREASE	SHAFT TYPE	SPECIAL DE	SPECIAL ODE	SHAFT MATERIAL	FRAME MATERIAL
DE	OPE						
BALL	BALL	MULTEMP SRL	SGL SPL EXT	0.625 x 3.83 IN SEK	NONE	1144 STRESSPROOF (C-223)	ROLLED STEEL
6203	6203						

THERMO-PROTECTORS				THERMISTORS	CONTROL	SPACE /n HEATERS
THERMOSTATS	PROTECTORS	WDG RTDs	BRG RTDs			
NONE	AUTOMATIC	NONE	NONE	NONE	FALSE	NONE VOLTS

If Inverter equals NONE, contact factory for further information

\*  
N  
O  
T  
E  
S  
\*

INVERTER TORQUE: NONE
INV. HP SPEED RANGE: NONE
ENCODER: NONE
NONE NONE
NONE NONE PPR
BRAKE: NONE NONE
NONE P/N NONE
NONE NONE
NONE FT-LB NONE V NONE Hz

DATE: 06/27/2017 05:42:35 AM  
 FORM 3531 REV.3 02/07/99  
 \*\* Subject to change without notice.