

PRODUCT INFORMATION PACKET

marathon[®]
Motors

Model No: 048A11O1874
Catalog No: X038
1/2,1140,OPEN,48Y,1,60,460
Direct Drive



Regal and Marathon are trademarks of Regal Beloit Corporation or one of its affiliated companies.

©2018 Regal Beloit Corporation, All Rights Reserved. MC017097E

REGAL



Nameplate Specifications

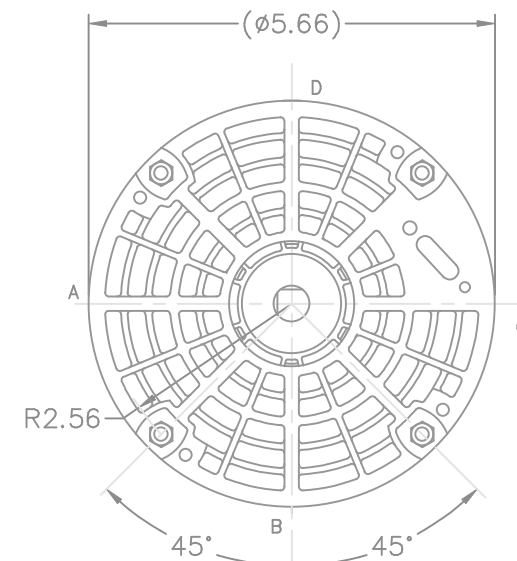
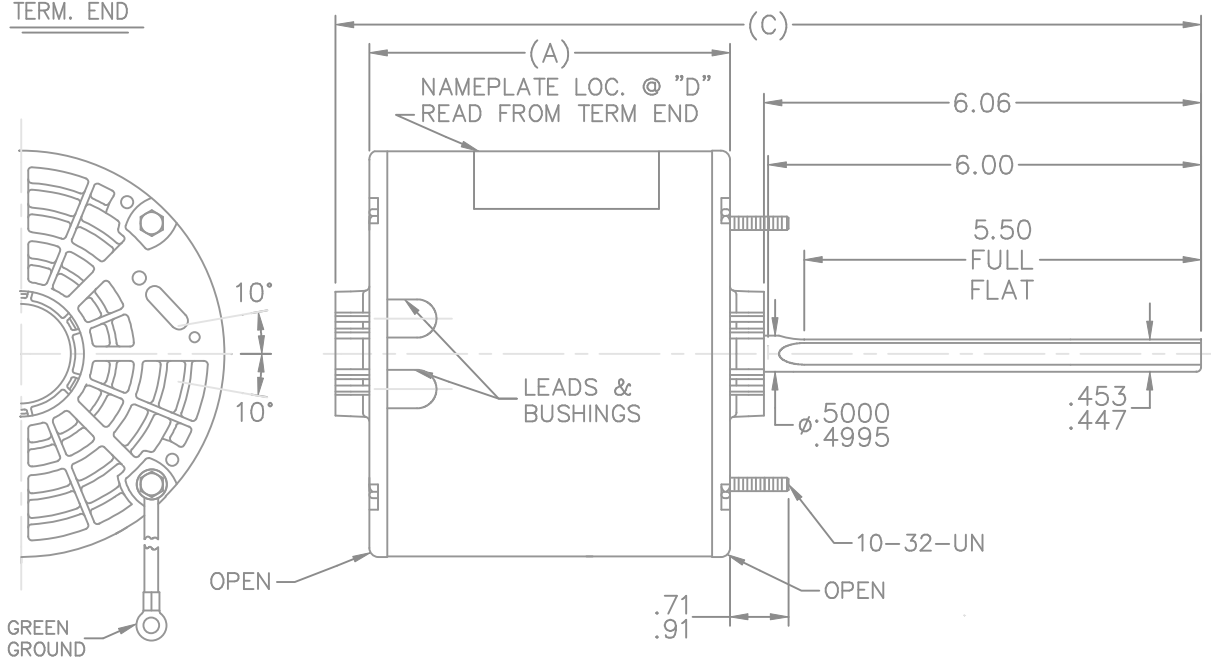
Output HP	0.50 Hp	Output KW	0.37 kW
Frequency	60 Hz	Voltage	460 V
Current	1.6 A	Speed	1075 rpm
Service Factor	1	Phase	1
Efficiency	62.6 %	Duty	Continuous
Insulation Class	B	Design Code	2VT
KVA Code	D	Frame	48Y
Enclosure	Open Air Over	Overload Protector	Auto Lock Rotor Only
Ambient Temperature	40 °C	Drive End Bearing Size	6203
Opp Drive End Bearing Size	6203	UL	Recognized
CSA	Y	CE	N
IP Code	01		

Technical Specifications

Electrical Type	Permanent Split Capacitor	Starting Method	Across The Line
Poles	6	Rotation	Selective Counterclockwise
Mounting	Round	Motor Orientation	Horizontal
Drive End Bearing	Ball	Opp Drive End Bearing	Ball
Frame Material	Rolled Steel	Shaft Type	Single Special Extension
Overall Length	12.19 in	Frame Length	4.75 in
Shaft Diameter	0.500 in	Shaft Extension	6.06 in
Assembly/Box Mounting	F1 Only		
Outline Drawing	A-SS400491-475	Connection Diagram	9580309

This is an uncontrolled document once printed or downloaded and is subject to change without notice. Date Created: 07/02/2018

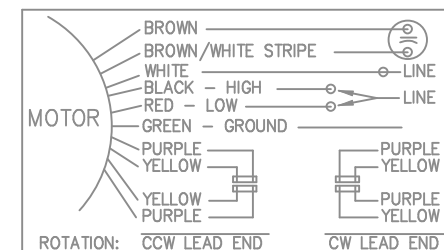
TERM. END



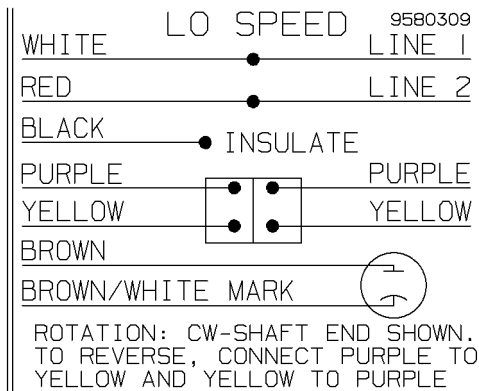
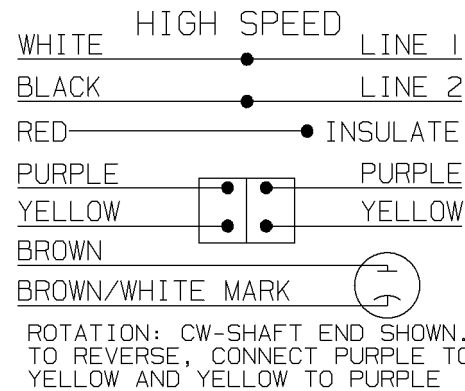
LEAD DESCRIPTION:

- 1 BLACK, 1 RED & 1 WHITE LEAD WITH .50 BARE WIRE STRIP 27.00" LONG.
- 2 BROWN CAPACITOR LEADS WITH .50" BARE WIRE STRIP 27.00" LONG BROWN WITH WHITE MARK IS COMMON TO WHITE LEAD.
- REVERSING LEADS ARE MOLDED INTO MATING PULL APART PLUGS 1 PURPLE, AND 1 YELLOW PER PLUG 5.00" LONG.
- GREEN GROUND LEAD WITH TERM. FOR #10 SCREW 12.00" LONG.

DASH	FRAME	C	A
400	48Y	11.44	4.50
425	48Y	11.69	4.75
450	48Y	11.94	5.00
475	48Y	12.19	5.25
500	48Y	12.44	5.50



			TOLERANCES UNLESS SPECIFIED		MARATHON ELECTRIC		DRAWN TRB 09-01-1999		
NO.	REVISION	BY & DATE	CHK	ANG	FINISH	MAT'L.	REF	CHK ML 09-02-1999	
5	UPDATED DRAWING	RJW 04-13-2007		DEC.	INCHES			APPD RJS 09-03-1999	
4	REDRAWN IN AUTOCAD	TAT 08-03-2004	ML	.X	±.1			SCALE 3=8	
3	REVISED NAME PLATE LOCATION	CN 29400-13	CAV	01-18-2000	.XX	±.03	TITLE OUTLINE		
2	BLACK, RED, & WHITE WAS 30"	MU26803	CAV	09-10-1999	.XXX	±.005			
1	NEW DRAWING	MU26799	TRB	09-03-1999	.XXXX	±.0005			
								FMF	
								PREV	
THIS DRAWING IN DESIGN AND DETAIL IS OUR PROPERTY AND MUST NOT BE USED EXCEPT IN CONNECTION WITH OUR WORK ALL RIGHTS OF DESIGN AND INVENTION ARE RESERVED THIS IS AN ELECTRONICALLY GENERATED DOCUMENT - DO NOT SCALE THIS PRINT			RFP	CAD FILE ss400491		SIZE A	DRAWING NO. SS400491	PAGE OF	REV. 5
			DIST	WP					



				✓ MAX. SURFACE ROUGHNESS UNLESS NOTED OTHERWISE	UNLESS OTHERWISE SPECIFIED DIMENSIONS ARE IN INCHES TOL. ON XX± .02 XXX± .005 XXXX± .0005 ANGLES± 7'30"		
				MATL SPEC		DRAWN BY TRB	09-01-1999
				FINISH	MARATHON ELECTRIC	CHKD BY ML	09-02-1999
	09-03-1999	NEW DRAWING	MU26799	TRB	WAUSAU, WISCONSIN 54401	APPD BY RJS	09-03-1999
REV	DATE	CHANGE	NAME	PART NAME CONNECTION DIAGRAM INSERT			DRWG NO A- 9580309
		SHOP BOOK	PURCHASED	DISTRIBUTION - WA - LB - WP - LM		CADD FILE NO.	9580309

ERROR: syntaxerror
OFFENDING COMMAND: --nostringval--

STACK:

225 /grave
224 /germandbls
223 /Thorn
222 /Yacute
221 /Udieresis
220 /Ucircumflex
219 /Uacute
218 /Ugrave
217 /Oslash
216 /multiply
215 /Odieresis
214 /Otilde
213 /Ocircumflex
212 /Oacute
211 /Ograve
210 /Ntilde
209 /Eth
208 /Idieresis
207 /Icircumflex
206 /Iacute
205 /Igrave
204 /Edieresis
203 /Ecircumflex
202 /Eacute
201 /Egrave
200 /Ccedilla
199 /AE
198 /Aring
197 /Adieresis
196 /Atilde
195 /Acircumflex
194 /Aacute
193 /Agrave
192 /questiondown

CERTIFICATION DATA SHEET

Model#: 48A1101874 A WINDING#: PE4861936 NONE 4
 CONN. DIAGRAM: 9580309 ASSEMBLY: F1 ONLY
 OUTLINE: A-SS400491-475

TYPICAL MOTOR PERFORMANCE DATA

HP	KW	SYNC. RPM	F.L. RPM	FRAME	ENCLOSURE	KVA CODE	DESIGN		
1/2	.37	-	1075	48Y	OPAO	D	2VT		
PH	Hz	VOLTS	FL AMPS	START TYPE	DUTY	INSL	S.F	AMB°C	ELEVATION
1	60	460	1.6	ACROSS THE LINE	CONTINUOUS	B3	1.0	40	3300
FULL LOAD EFF: -		3/4 LOAD EFF: -	1/2 LOAD EFF: -	GTD. EFF		ELEC. TYPE		NO LOAD AMPS	
FULL LOAD PF: -		3/4 LOAD PF: -	1/2 LOAD PF: -	-		PSC 2 SPEED		-	
F.L. TORQUE		LOCKED ROTOR AMPS		L.R. TORQUE		B.D. TORQUE		F.L. RISE°C	
- LB-FT		-		- LB-FT -		- LB-FT -		-	
SOUND PRESSURE @ 3 FT.	SOUND POWER	ROTOR WK^2	MAX. WK^2	SAFE STALL TIME	STARTS /HOUR	APPROX. MOTOR WGT			
- dBA	- dBA	-1 LB-FT^2	- LB-FT^2	- SEC.	-	- LBS.			

*** SUPPLEMENTAL INFORMATION ***

DE BRACKET TYPE	ODE BRACKET TYPE	MOUNT TYPE	ORIENTATION	SEVERE DUTY	HAZARDOUS LOCATION	DRIP COVER	SCREENS	PAINT
STANDARD	STANDARD	ROUND	HORIZONTAL	FALSE	NONE	FALSE	NONE	GRAY (POWDER)
BEARINGS		GREASE	SHAFT TYPE	SPECIAL DE	SPECIAL ODE	SHAFT MATERIAL	FRAME MATERIAL	
DE	OPE	BEACON 325	SGL SPL EXT	0.500 x 6.00 WITH 5.50 DBL FULL FLATS	NONE	1144 STRESSPROOF (C-223)	ROLLED STEEL	
BALL	BALL							
6203	6203							
THERMO-PROTECTORS				THERMISTORS	CONTROL	SPACE /n HEATERS		
THERMOSTATS	PROTECTORS	WDG RTDs	BRG RTDs	NONE	FALSE	NONE VOLTS		
NONE	AUT LCK RTR ONLY	NONE	NONE					

If Inverter equals NONE, contact factory for further information

*
N
O
T
E
S
*

INVERTER TORQUE: NONE
INV. HP SPEED RANGE: NONE
ENCODER: NONE
NONE NONE
NONE NONE PPR
BRAKE: NONE NONE
NONE P/N NONE
NONE NONE
NONE FT-LB NONE V NONE Hz

DATE: 06/27/2017 04:36:40 AM
 FORM 3531 REV.3 02/07/99
 ** Subject to change without notice.