

PRODUCT INFORMATION PACKET



Model No: 56S17D7208B

Catalog No: M900277.00

..1/3HP..1725RPM.56.DP.115V.1PH.60HZ.CONT.40C.1.35SF.RESILIENT BASE-EXTENDED
STUDS.56S17D7208B.....BELTED FAN / SPLIT PHASE.AUTOMATIC.....

Direct Drive



Regal and Leeson are trademarks of Regal Beloit Corporation or one of its affiliated companies.

©2018 Regal Beloit Corporation, All Rights Reserved. MC017097E





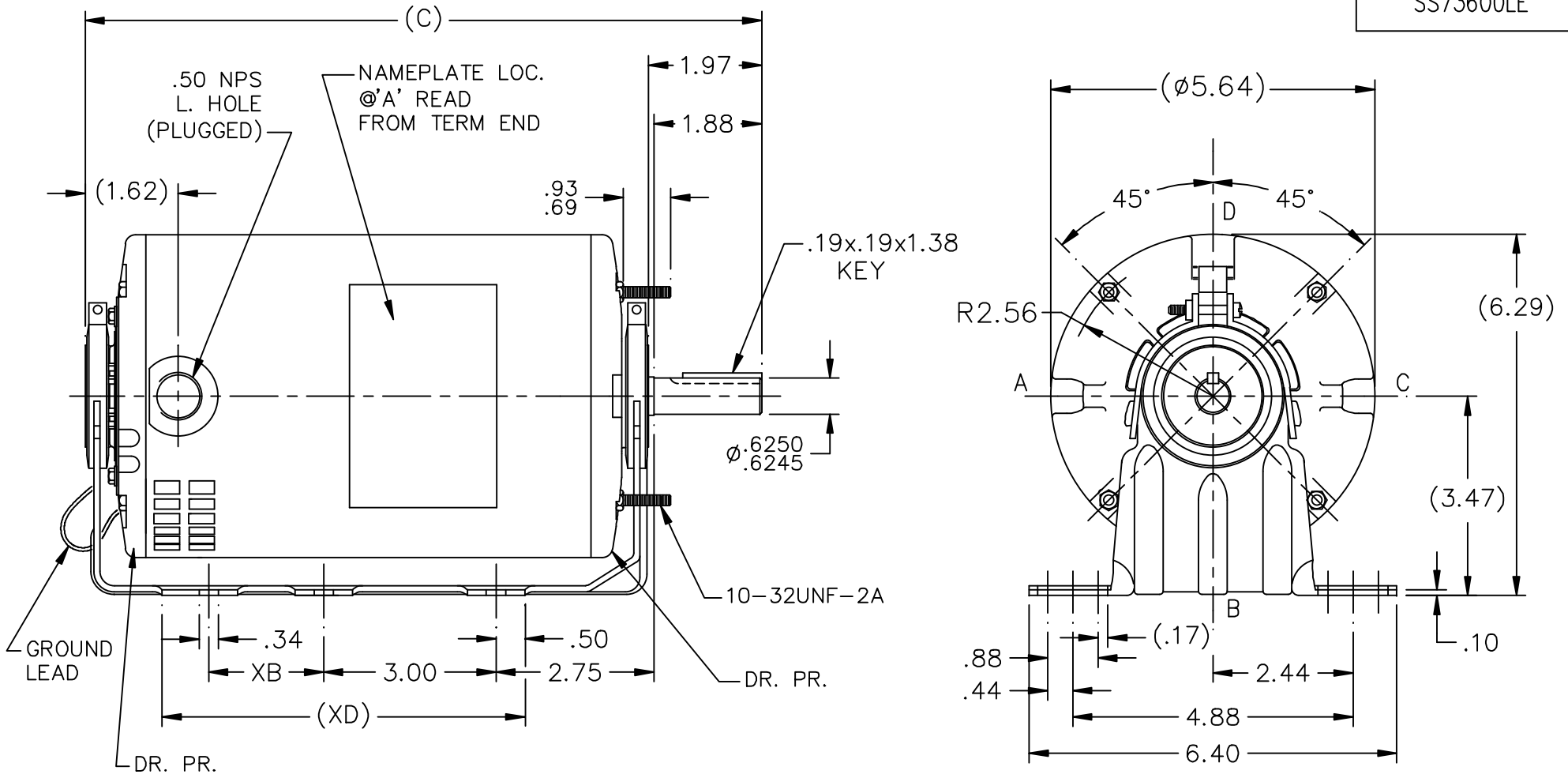
Nameplate Specifications

Output HP	0.33,0.11 Hp	Output KW	0.25 kW
Frequency	60 Hz	Voltage	115 V
Current	5.4,2.9 A	Speed	1725,1140 rpm
Service Factor	1.35	Phase	1
Efficiency	64 %	Duty	Continuous
Insulation Class	B	Design Code	2VT
KVA Code	P	Frame	56
Enclosure	Drip Proof	Overload Protector	Automatic
Ambient Temperature	40 °C	Drive End Bearing Size	203
Opp Drive End Bearing Size	203	UL	Recognized
CSA	Y	CE	N
IP Code	22		

Technical Specifications

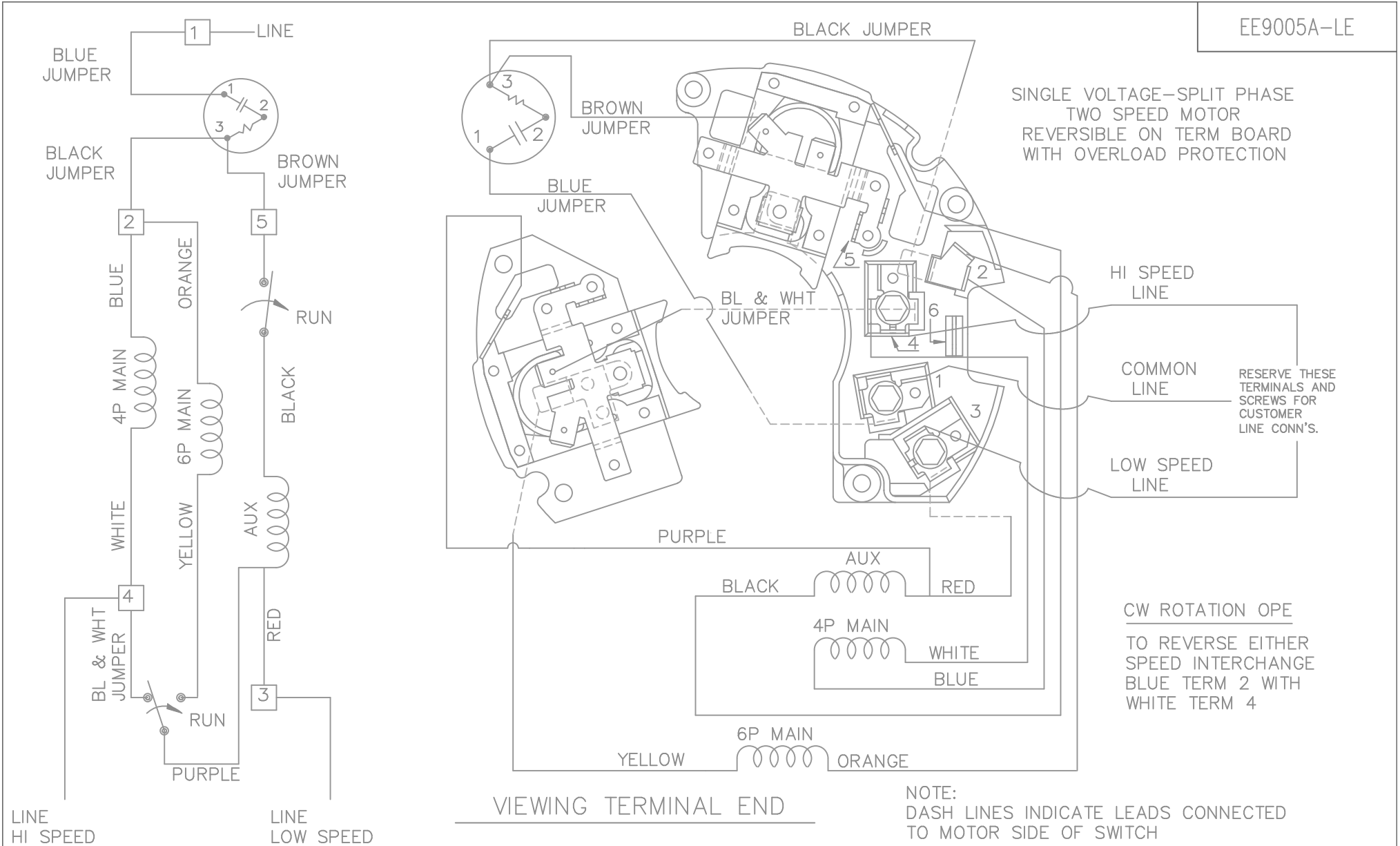
Electrical Type	Split Phase	Starting Method	Across The Line
Poles	4//6	Rotation	Selective Counterclockwise
Mounting	Resilient Base	Motor Orientation	HORIZONTAL
Drive End Bearing	BALL	Opp Drive End Bearing	BALL
Frame Material	Rolled Steel	Shaft Type	NEMA 48
Overall Length	10.78 in	Frame Length	6.75 in
Shaft Diameter	0.625 in	Shaft Extension	1.88 in
Assembly/Box Mounting	F1 ONLY		
Outline Drawing	A-SS73600LE-675	Connection Diagram	A-EE9005A-LE


This is an uncontrolled document once printed or downloaded and is subject to change without notice. Date Created: 10/15/2018



DASH	C	XB	XD
675	10.78	2.00	6.31

				TOLERANCES UNLESS SPECIFIED		LEESON	ELECTRIC MOTORS GEARMOTORS AND DRIVES	DRAWN BRH 08-04-1995		
				DEC.	INCHES			CHK	DA 08-08-1995	
4	UPDATED FRAME GEOMETRY ISAAC 12-3033	RFH 06-28-2012	EH	.X	±.1	TITLE OUTLINE	SCALE 3=8	APPD	GK 08-08-1995	
3	EWDRAWN TO CURRENT COPANY STANDARDS	CJK 09-15-2002		.XX	±.03			REF		
2	RE-ISSUE, ADDED DASH TABLE	DRS 12-19-2000		.XXX	±.005			FMF		
1	REDRAWN ON CAD, STUD BOLT EXT. WAS .69/.88	BRH 06-08-1995		.XXXX	±.0005			PREV		
NO.	REVISION	BY & DATE	CHK	ANG	±7'30"	FINISH				
THIS DRAWING IN DESIGN AND DETAIL IS OUR PROPERTY AND MUST NOT BE USED EXCEPT IN CONNECTION WITH OUR WORK ALL RIGHTS OF DESIGN AND INVENTION ARE RESERVED THIS IS AN ELECTRONICALLY GENERATED DOCUMENT - DO NOT SCALE THIS PRINT				RFP		CAD FILE SS73600LE	SIZE A	DRAWING NO. SS73600LE	PAGE OF 4	REV. 4
				DIST	WP					



LINE HI SPEED		LINE LOW SPEED		TOLERANCES UNLESS SPECIFIED		 ELECTRIC MOTORS GEARMOTORS AND DRIVES	DRAWN RJW 11-02-2004 CHK ML 11-02-2004 APPD JET 11-03-2004			
				DEC.	INCHES		TITLE CONNECTION DIAGRAM	SCALE		
				.X	±.1		48 FR. TWO SPEED	REF		
				.XX	±.02		MAT'L.	FMF		
				.XXX	±.005		FINISH	PREV		
NO.	REVISION	BY & DATE	CHK	ANG	±7'30"	CAD FILE EE9005A_LE	SIZE A	DRAWING NO. EE9005A-LE	PAGE OF	REV.
THIS DRAWING IN DESIGN AND DETAIL IS OUR PROPERTY AND MUST NOT BE USED EXCEPT IN CONNECTION WITH OUR WORK ALL RIGHTS OF DESIGN AND INVENTION ARE RESERVED THIS IS AN ELECTRONICALLY GENERATED DOCUMENT - DO NOT SCALE THIS PRINT				RFP						
				DIST	WP-LE					



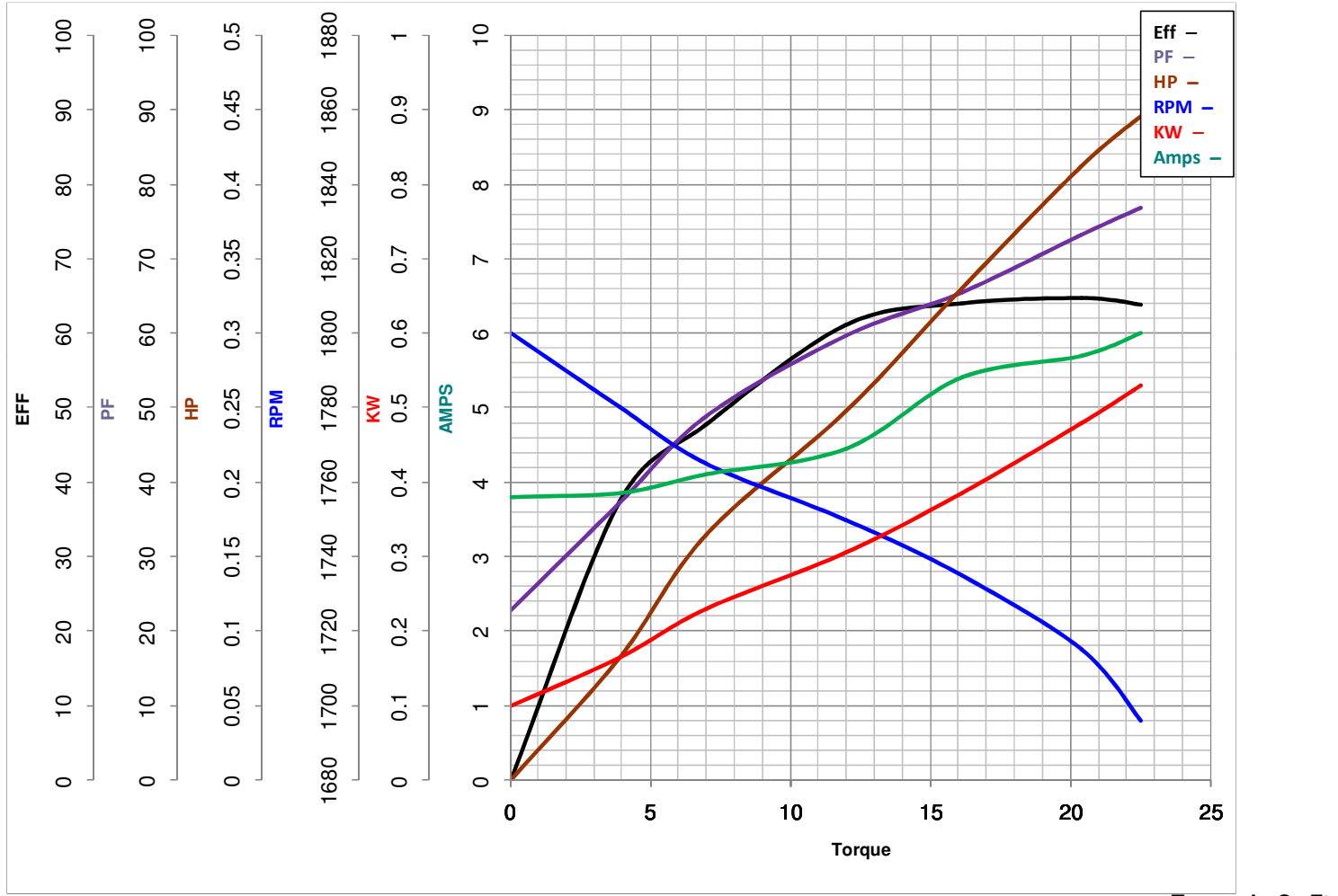
LEESON ELECTRIC CORPORATION
TYPICAL PERFORMANCE CURVE for AC MOTOR

Model No M900277.00

Curve at 115 Volts HP 0.33&0.11 PHASE 1
60 HZ
0.33 HP VOLTS 115&115

Catalog No M900277.00

HZ 60&60 RPM 1725&1140



FL TORQUE	<u>16.1</u>	Oz.Ft	FL AMPS	<u>5.4</u>	
BD TORQUE	<u>37.1</u>	Oz.Ft	PU TORQUE	<u>19.2</u>	Oz.Ft
LR TORQUE	<u>20.5</u>	Oz.Ft	LR AMPS	<u>36.4</u>	
WINDING	SE48(4-6)7-1		Date	3/28/2018	