

PRODUCT INFORMATION PACKET



Model No: CM38T17FZ16B

Catalog No: M1145125.00

..1/6HP..90RPM.38.TEFC./208-230V.3PH.60HZ.....CM38T17FZ16B.P240...19:1.INVERTER
RATED..103LBIN.....

P240 Series



Regal and Leeson are trademarks of Regal Beloit Corporation or one of its affiliated companies.

©2018 Regal Beloit Corporation, All Rights Reserved. MC017097E





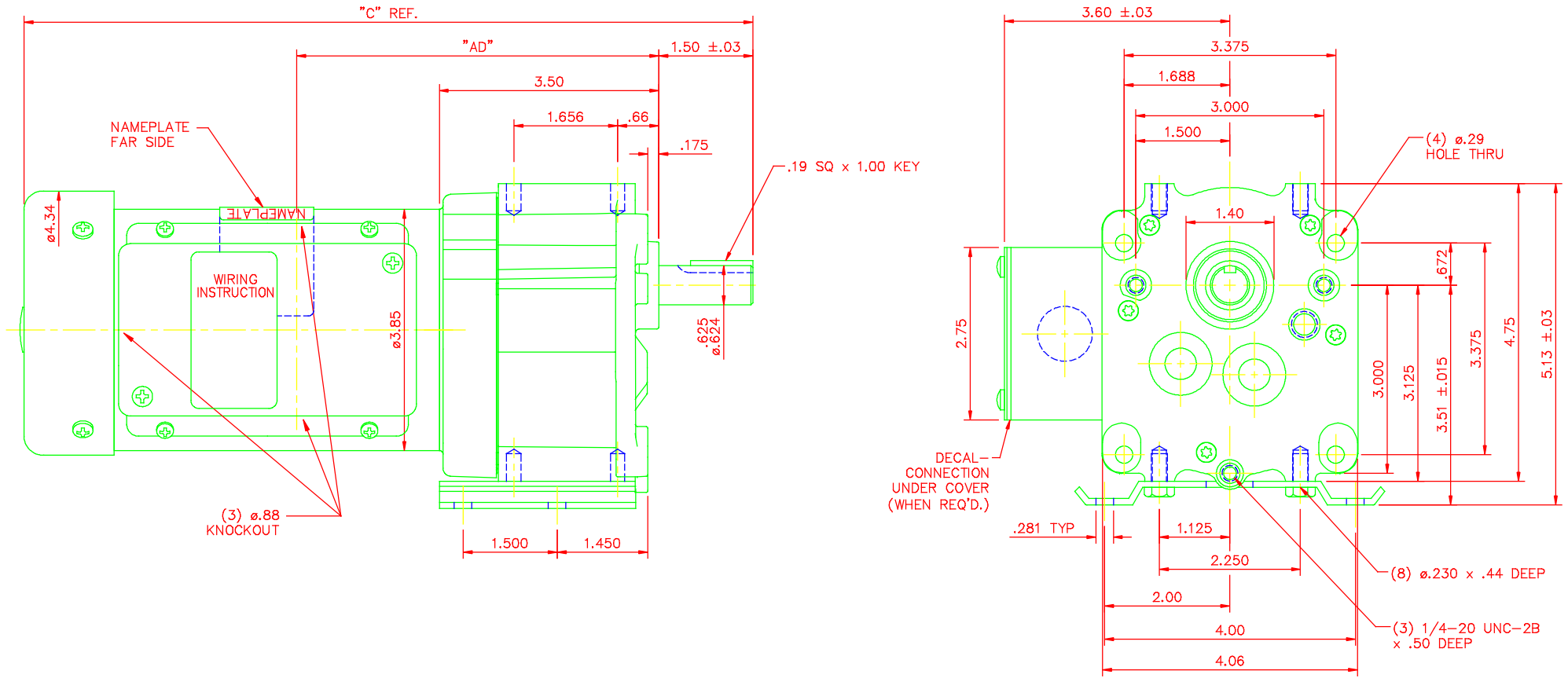
Nameplate Specifications

Output HP	0.17 Hp	Output KW	0.12 kW
Frequency	60 Hz	Voltage	208-230 V
Current	0.72 A	Speed	90 rpm
Service Factor	1	Phase	3
Duty	Continuous	Insulation Class	F
KVA Code	J	Frame	38
Enclosure	Totally Enclosed Fan Cooled	Overload Protector	No
Ambient Temperature	40 °C	Drive End Bearing Size	6201
Opp Drive End Bearing Size	6201	UL	Recognized
CSA	Y	CE	N

Technical Specifications

Rotation	Reversible	Mounting	Special
Shaft Type	Parallel	Overall Length	11.63 in
Frame Length	5.38 in	Shaft Diameter	0.625 in
Shaft Extension	1.5 in		
Outline Drawing	M1030998	Connection Diagram	005102.01

This is an uncontrolled document once printed or downloaded and is subject to change without notice. Date Created: 10/15/2018

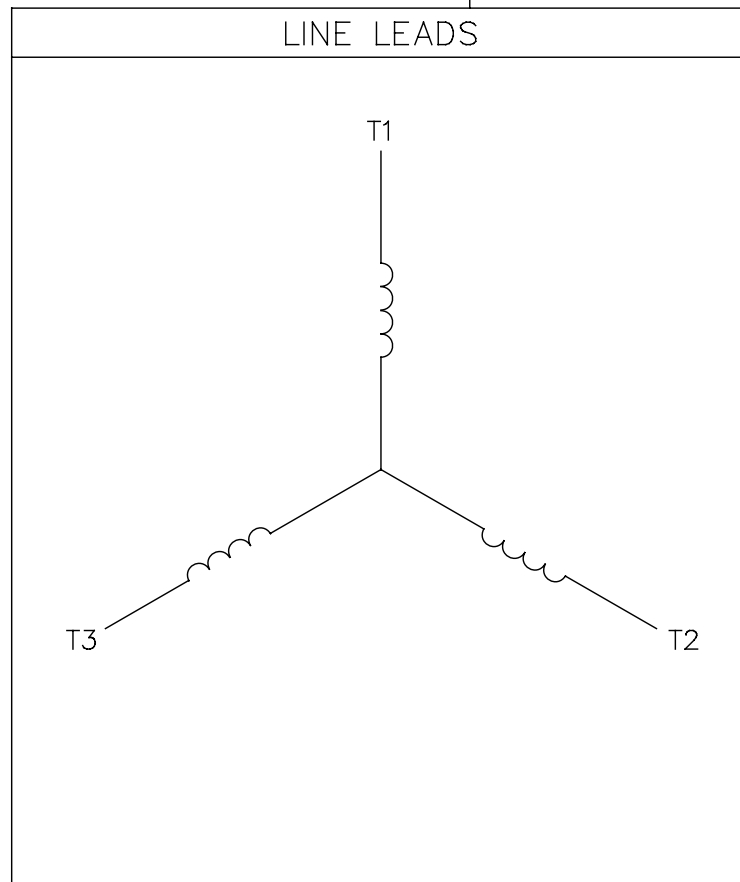
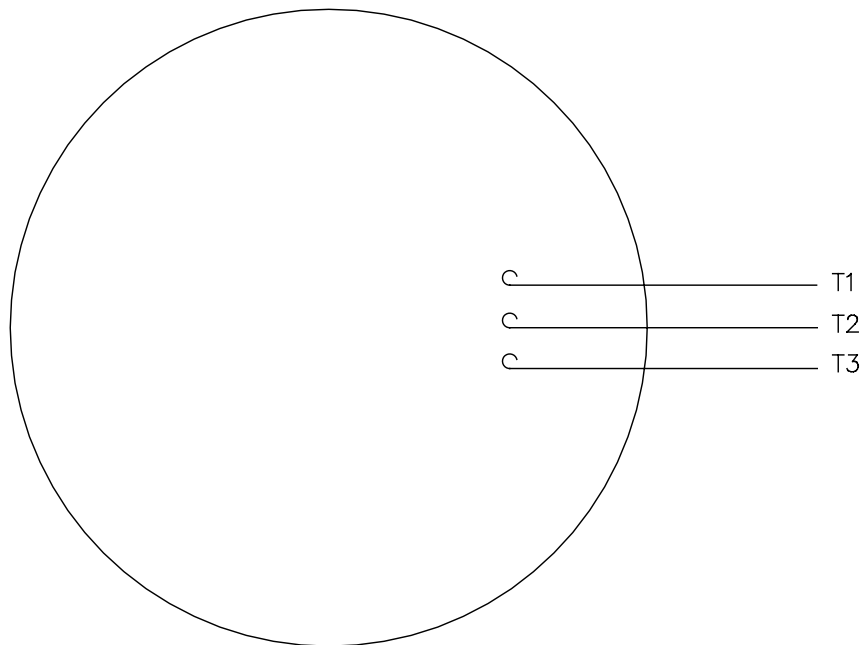


CATALOG NUMBER	OUTPUT RPM	FULL LOAD TORQUE LB.-IN.	INPUT HP	OVERHUNG LOAD LBS.	RATIO TO 1	"C"	"AD"
M1145122.00	16	391	1/6	237	103	11.63	5.75
M1145123.00	30	295	1/6	237	58	11.63	5.75
M1145124.00	60	157	1/6	237	29	11.63	5.75
M1145125.00	90	103	1/6	237	19	11.63	5.75
M1145126.00	156	60	1/6	237	11	11.63	5.75

TOLERANCES UNLESS SPECIFIED		DEC.		INCHES		TITLE		DRAWN					
.X	±.1	.XX	±.03	.XXX	±.005	.XXXX	±.0005	LEESON	LST 5/27/05				
.01	ADDED PERFORMANCE ATTRIBUTES TABLE	RLW	7/7/05	CHK	ANG	FINISH	MAT'L	ELECTRIC MOTORS GEARMOTORS AND DRIVES	CHK RW 6/22/05				
NO.	REVISION	BY & DATE	CHK	ANG	±1/2"	FINISH	PREV	APPD KH 6/22/05	APPD KH 6/22/05				
THIS DRAWING IN DESIGN AND DETAIL IS OUR PROPERTY AND MUST NOT BE USED EXCEPT IN CONNECTION WITH OUR WORK ALL RIGHTS OF DESIGN AND INVENTION ARE RESERVED THIS IS AN ELECTRONICALLY GENERATED DOCUMENT - DO NOT SCALE THIS PRINT								RFP	CAD FILE	M1030998	SIZE	DRAWING NO.	REV.
								DIST	B	M1030998	01		

005102-01

VIEW FROM OUTSIDE OF MOTOR AT SWITCH END.



CONNECT LEADS AS FOLLOWS
FOR FOUR CONDUCTOR CORD ()

CORD	L1 (RED)	L2 (WHITE)	L3 (BLACK)	(GREEN)
MOTOR	T1	T2	T3	GROUND

				TOLERANCES UNLESS SPECIFIED		REGAL™ Regal Beloit America, Inc.		DRAWN JRW 9/11/75		
				DEC.	INCHES			CHK		
				.X	±.1			APPD JCW 9/11/75		
08	UPDATED TO REGAL LOGO	SAJ 06/26/15	AJY	.XX	±.01	TITLE EXTERNAL WIRING DIAGRAM TYPE "T" W/O PROTECTOR		SCALE 1=1		
07	UPDATED TO CURRENT STANDARDS	DBT 5/30/97		.XXX	±.005			REF W-T6343-6		
06	REDRAWN ON CAD; ADDED DECAL NUMBER	SAW 1/24/95		.XXXX	±.0005			FMF 6T17FB7		
NO.	REVISION	BY & DATE	CHK	ANG	±1/2"	FINISH		PREV		
THIS DRAWING IN DESIGN AND DETAIL IS OUR PROPERTY AND MUST NOT BE USED EXCEPT IN CONNECTION WITH OUR WORK ALL RIGHTS OF DESIGN AND INVENTION ARE RESERVED THIS IS AN ELECTRONICALLY GENERATED DOCUMENT - DO NOT SCALE THIS PRINT				RFP	5/1/02	CAD FILE 00510201		SIZE	DRAWING NO.	REV.
				DIST BRF-NLV				A	005102-01	08