

PRODUCT INFORMATION PACKET

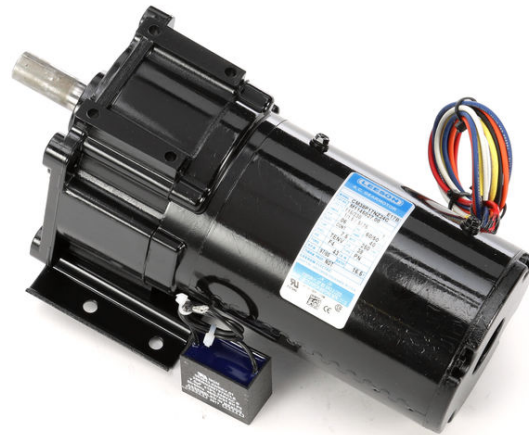


Model No: CM38P17NZ24C

Catalog No: M1145027.00

..1/15HP..97RPM.38.TENV.115/230V.1PH.60HZ.....CM38P17NZ24C.P240...16.5:1.AC GEARMOTORS SUB-FHP..43LBIN.....

P240 Series



Regal and Leeson are trademarks of Regal Beloit Corporation or one of its affiliated companies.

©2018 Regal Beloit Corporation, All Rights Reserved. MC017097E





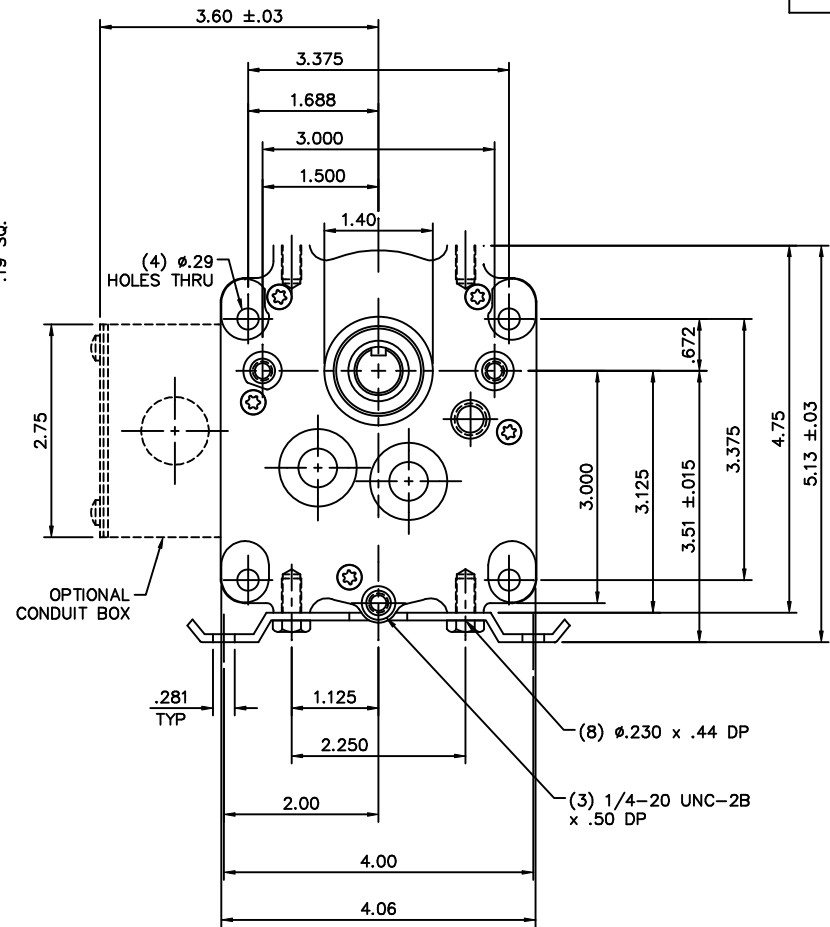
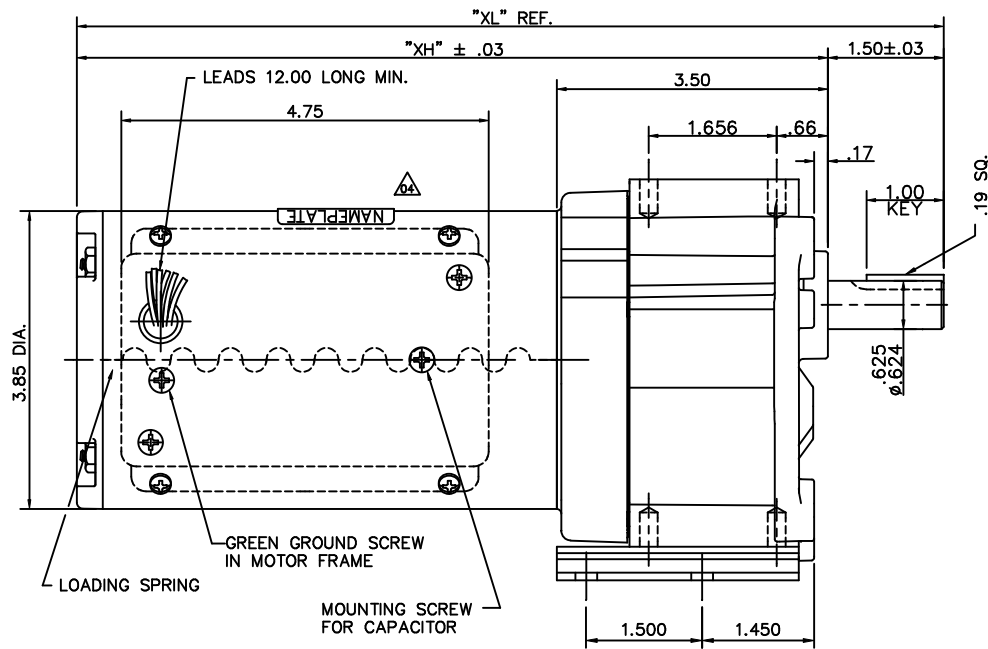
Nameplate Specifications

| | | | |
|----------------------------|----------------------------------------|------------------------|-------------------|
| Output HP | 0.06 Hp | Output KW | 0.04 kW |
| Frequency | 60 Hz | Voltage | 115 V |
| Current | 1.0/0.50 A | Speed | 97 rpm |
| Service Factor | 1 | Phase | 1 |
| Duty | Continuous | Insulation Class | F |
| KVA Code | D | Frame | 38 |
| Enclosure | Totally Enclosed Non Ventilated | Overload Protector | No |
| Ambient Temperature | 40 °C | Drive End Bearing Size | 6201 |
| Opp Drive End Bearing Size | 6201 | UL | Recognized |
| CSA | Y | CE | Y |

Technical Specifications

| | | | |
|-----------------|--------------------------|--------------------|--------------------|
| Rotation | Reversible | Mounting | Special |
| Shaft Type | Parallel | Overall Length | 10.46 in |
| Frame Length | 5.13 in | Shaft Diameter | 0.625 in |
| Shaft Extension | 1.5 in | | |
| Outline Drawing | M1030380-M1145027 | Connection Diagram | M1005040.02 |

This is an uncontrolled document once printed or downloaded and is subject to change without notice. Date Created: 10/15/2018

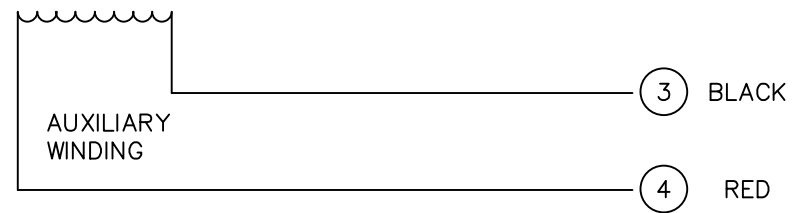
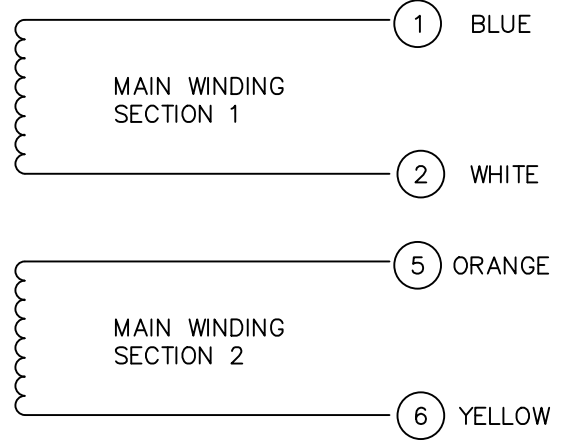
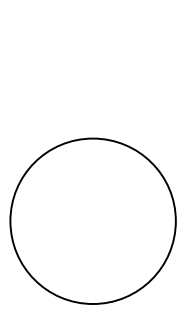


| CATALOG NUMBER | OUTPUT RPM | FULL LOAD TORQUE LB.-IN. | INPUT HP | OVERHUNG LOAD LBS. | GEARMOTOR TYPE & FRAME | RATIO TO 1 | "XL" | "XH" |
|----------------|------------|--------------------------|----------|--------------------|------------------------|------------|-------|------|
| M1145023.00 | 15 | 208 | 1/15 | 407 | P243-38 | 114 | 10.46 | 8.96 |
| M1145024.00 | 30 | 135 | 1/15 | 330 | P242-38 | 52 | 10.46 | 8.96 |
| M1145025.00 | 45 | 92 | 1/15 | 292 | P242-38 | 35 | 10.46 | 8.96 |
| M1145026.00 | 70 | 61 | 1/15 | 256 | P242-38 | 23 | 10.46 | 8.96 |
| M1145027.00 | 97 | 43 | 1/15 | 232 | P242-38 | 16.5 | 10.46 | 8.96 |
| M1145028.00 | 139 | 30 | 1/15 | 208 | P242-38 | 11.5 | 10.46 | 8.96 |
| M1145029.00 | 8 | 345 | 1/15 | 491 | P243-38 | 216 | 10.46 | 8.96 |

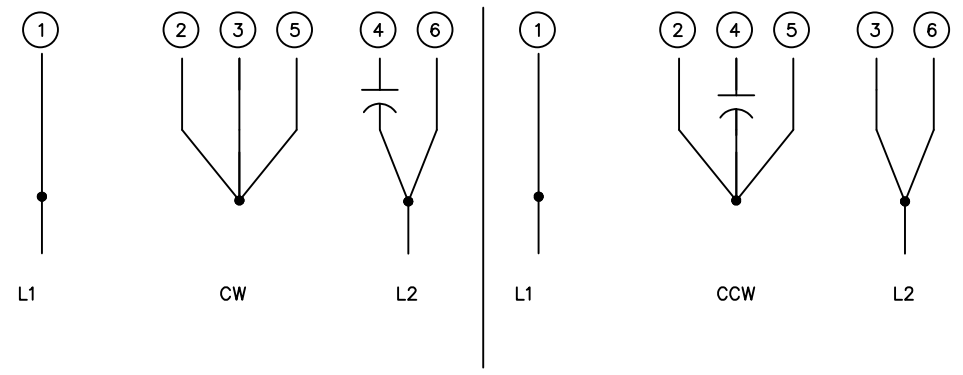
| | | | | | | | | | | | | |
|----------------------------------------------------------------------------------------------------------------------------------------------------------------------------------------------------------------------------------|-------------------------------------------------|-----------|----------|-----|-----------------------------|--------|---------------------------------------------------|--------------|--------------|------|-------------|------|
| 05 | EXTENDED 3 PT MOUNTING HOLES .14" TO MAKE FLUSH | RLW | 6/25/02 | | TOLERANCES UNLESS SPECIFIED | | ELECTRIC MOTORS GEARMOTORS AND DRIVES | DRAWN | SPV 05/21/94 | | | |
| 04 | REV'D NAMEPLATE APPEARANCE FOR ASSEMBLY | BJB | 6/25/02 | DWF | DEC. | | | INCHES | CHK | | | |
| | CLARITY PER ECR 65231 | | | | .X | ±.1 | APPD | DWF 05/21/94 | | | | |
| 03 | 3.50 WAS 3.562, 5.13 WAS 5.19 | SPV | 06/29/95 | | .XX | ±.03 | TITLE | SCALE | 5=8 | | | |
| 02 | ADDED CAPACITOR MOUNTING SCREW | SPV | 06/29/95 | | .XXX | ±.005 | OUTLINE DRAWING P240 GEARMOTOR - 38 FRAME A.C. | | REF | | | |
| 01 | REVISED TO NEW STOCK STANDARDS | TMZ | 05/15/95 | | .XXXX | ±.0005 | MAT'L | FMF | M1145023 | | | |
| NO. | REVISION | BY & DATE | CHK | ANG | ±1/2" | FINISH | PREV | | | | | |
| THIS DRAWING IN DESIGN AND DETAIL IS OUR PROPERTY AND MUST NOT BE USED EXCEPT IN CONNECTION WITH OUR WORK ALL RIGHTS OF DESIGN AND INVENTION ARE RESERVED THIS IS AN ELECTRONICALLY GENERATED DOCUMENT - DO NOT SCALE THIS PRINT | | | | | | | RFP | CAD FILE | M1030380 | SIZE | DRAWING NO. | REV. |
| | | | | | | | DIST | B | M1030380 | 05 | | |

M1005040.02

COLORED LEADS

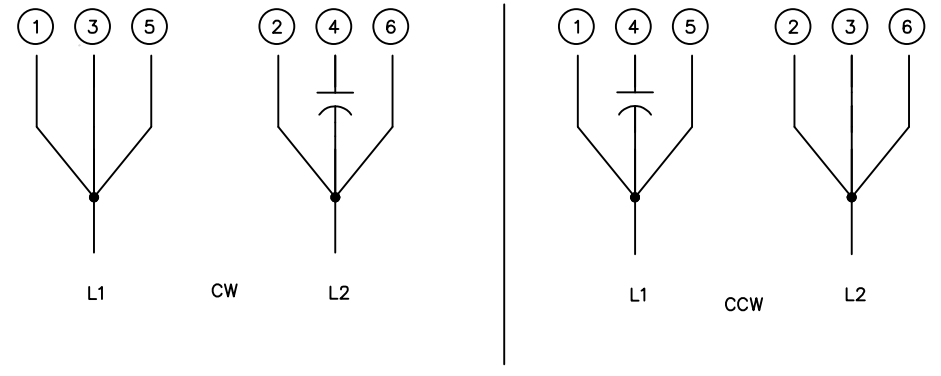


HIGH VOLTAGE CONNECTIONS



ROTATION VIEWING LEAD END OF MOTOR

LOW VOLTAGE CONNECTIONS



ROTATION VIEWING LEAD END OF MOTOR

| | | | | | | | | | | |
|-----------------------------------------------------------------------------------------------------------------------------------------------------------|-------------------------------|-----|---------|---------------------------------------|---------|------------------------------------|---------|----------------------------------------------------------------|-----------|----------------------------|
| | | | | TOLERANCES UNLESS OTHERWISE SPECIFIED | | LEESON ELECTRIC CORPORATION | | | | |
| | | | | DECIMALS | | | | | | |
| | | | | .00 | ± .01 | DRAWN | DK | TITLE EXTERNAL WIRING DIAGRAM DUAL VOLTAGE DUAL ROTATION | | |
| 02 | REDRAWN ON CAD | AJR | 6/28/99 | .000 | ± .005 | CH'K'D. | 10/3/91 | | | |
| 01 | REMOVED CAP FROM LEFT DIAGRAM | DD | 9/16/95 | .0000 | ± .0005 | APPR. | 10/3/91 | MAT'L. | | |
| NO. | REVISION | BY | DATE | FRACTIONS | ± 1/64 | SCALE | NONE | | | |
| THIS DRAWING IN DESIGN AND DETAIL IS OUR PROPERTY AND MUST NOT BE USED EXCEPT IN CONNECTION WITH OUR WORK ALL RIGHTS OF DESIGN AND INVENTION ARE RESERVED | | | | ANGLES | ± 1/2° | REF. | | FINISH | SIZE A | DRAWING NO. M1005040.02 |
| | | | | INCH/MM | | FMF | PR91376 | LECO CORP. | | |