

PRODUCT INFORMATION PACKET



Model No: CIM34D18FC10B

Catalog No: M1130297.00

...18KW-1/4HP..1800RPM.63D.IP54.24V...S1.40C.1.0SF.B14.CIM34D18FC10B.....

Metric Motors



Regal and Leeson are trademarks of Regal Beloit Corporation or one of its affiliated companies.

©2018 Regal Beloit Corporation, All Rights Reserved. MC017097E

REGAL



Nameplate Specifications

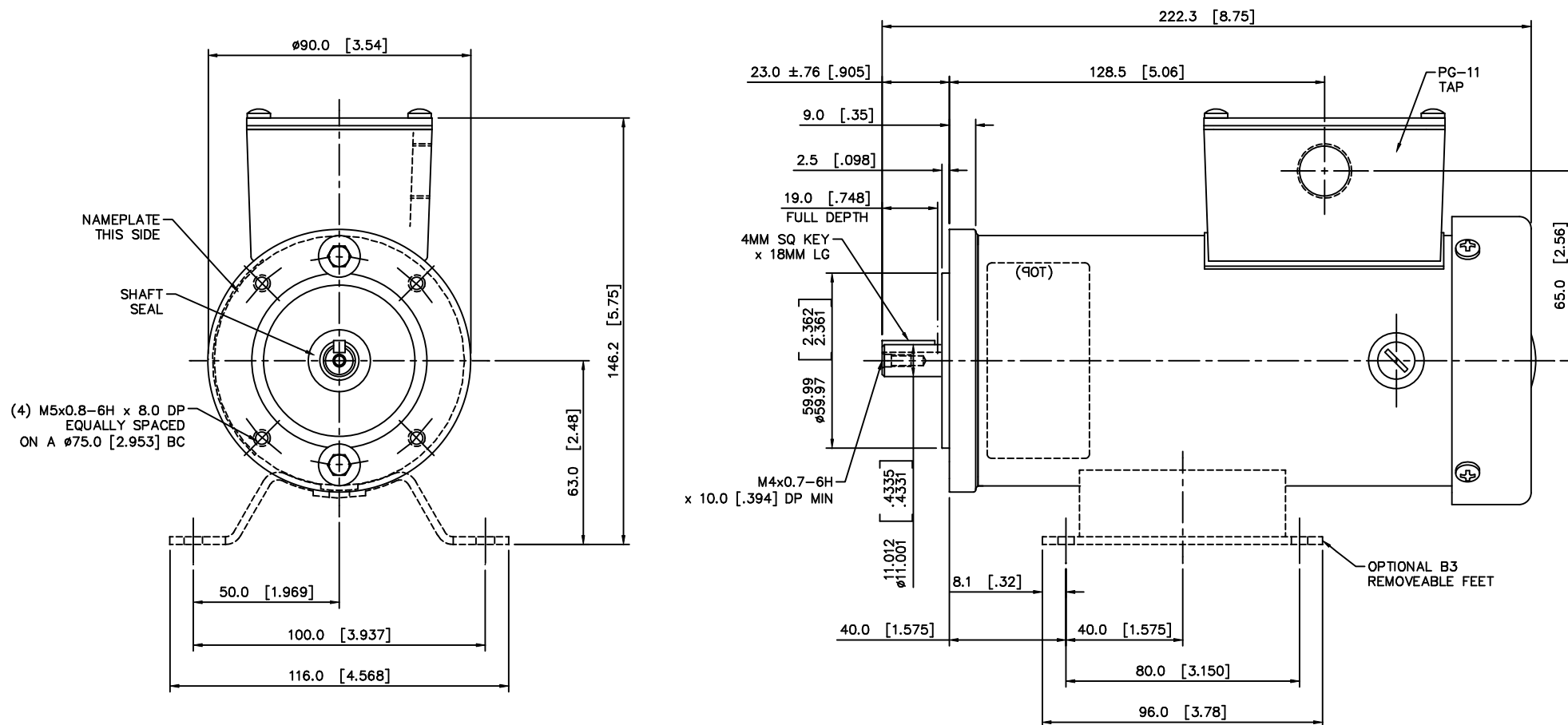
Output KW	0.18 kW	Voltage	24 V
Current	10.0 A	Speed	1800 rpm
Service Factor	1	Efficiency	76.5 %
Duty	S1	Insulation Class	F
Frame	63D	Enclosure	IP54
Overload Protector	No	Ambient Temperature	40 °C
Drive End Bearing Size	6201-13	Opp Drive End Bearing Size	6201-13
UL	Recognized	CSA	Y
CE	N		

Technical Specifications

Rotation	Reversible	Mounting	B14
Overall Length	8.75 in	Frame Length	6.43 in
Shaft Diameter	0.437 in	Shaft Extension	0.905 in
Outline Drawing	M1030621	Connection Diagram	M100514801

This is an uncontrolled document once printed or downloaded and is subject to change without notice. Date Created: 10/15/2018

M1030621.00

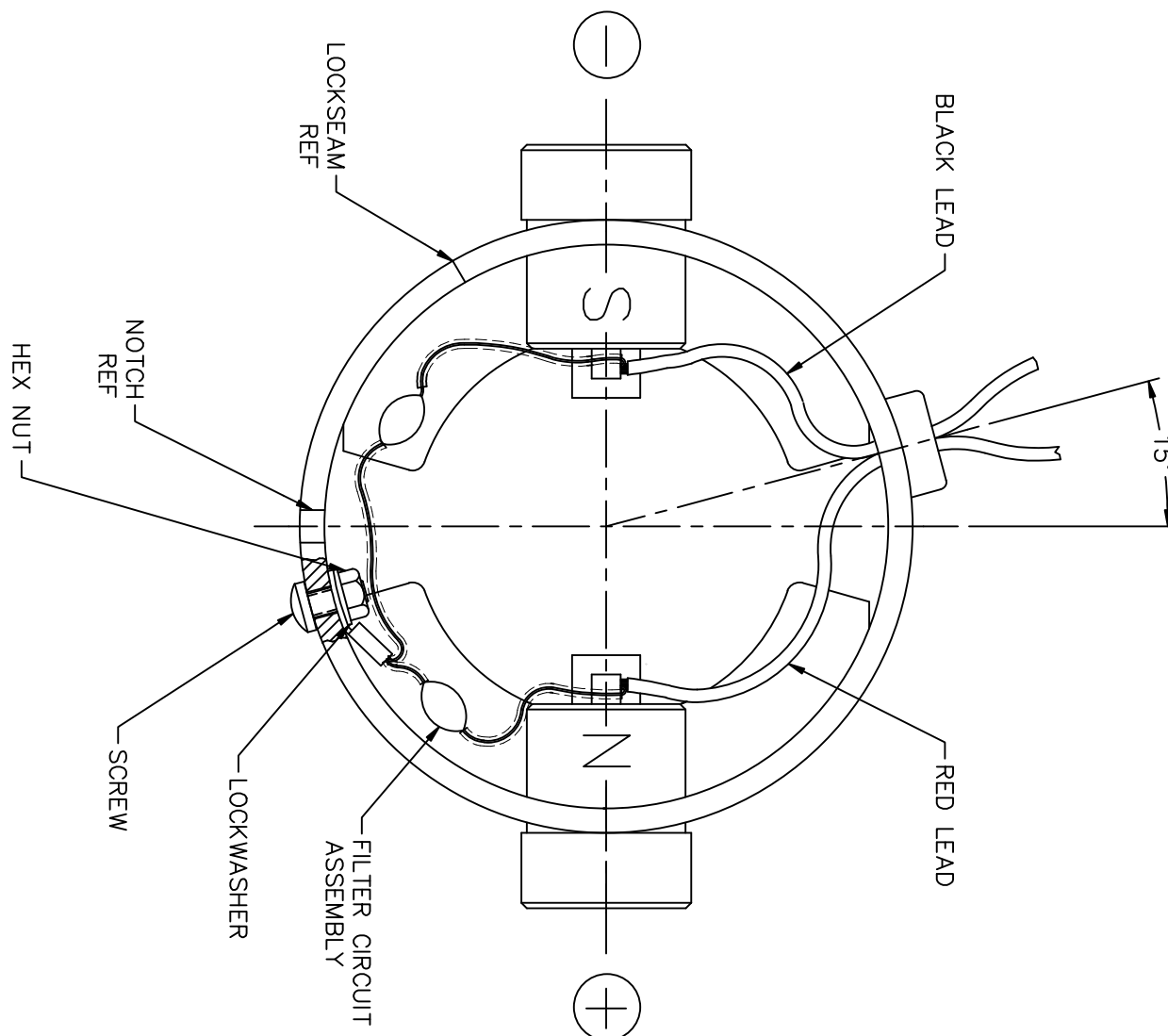


				TOLERANCES UNLESS SPECIFIED		LEESON	ELECTRIC MOTORS GEARMOTORS AND DRIVES	DRAWN SAD 01/15/98	
				DEC.	INCHES			CHK	
				.X	$\pm .1$			APPD	
				.XX	$\pm .03$	TITLE		SCALE	3=4
				.XXX	$\pm .005$	OUTLINE		REF	M1030347.00
01	ADDED $\pm .76$ TO THE 23.0 [.905] DIM PER ECR 82033	BPW 04/17/03		.XXXX	$\pm .0005$	IEC D63-B14 FLANGE		FMF	M1130297.00
NO.	REVISION	BY & DATE	CHK	ANG	$\pm 1/2'$	FINISH	CHRIS MOTOR	PREV	
THIS DRAWING IN DESIGN AND DETAIL IS OUR PROPERTY AND MUST NOT BE USED EXCEPT IN CONNECTION WITH OUR WORK ALL RIGHTS OF DESIGN AND INVENTION ARE RESERVED THIS IS AN ELECTRONICALLY GENERATED DOCUMENT - DO NOT SCALE THIS PRINT						RFP	CAD FILE	M1030621	SIZE
						DIST	DRAWING NO.		REV.
							B		M1030621.00
									01


```
ERROR: syntaxerror  
OFFENDING COMMAND: --nostringval--  
STACK:  
-savelevel-
```

M1005148.01

DC MOTORS



EXTERNAL CONNECTIONS FOR CW ROTATION VIEWING
LEAD END OF MOTOR WITH RED LEAD POSITIVE (+)
FOR CCW ROTATION REVERSE POLARITY

				TOLERANCES UNLESS SPECIFIED			ELECTRIC MOTORS GEARMOTORS AND DRIVES		DRAWN DWF 08/21/93	
03	ADDED INSULATION TO FILTER ASSEMBLY LEADS, ISAAC	IPG 3/18/2011		DEC.	INCHES				CHK	
	11-0805			.X	±.1				APPD	
02	CORRECTED "N" & "S", ECR 83508	SMB 12/18/03	IPG	.XX	±.01	TITLE CONNECTION DIAGRAM WITH FILTER CIRCUIT		SCALE	1=1	
01	6-32 NUT WAS M3.5 & 6-32 SCREW WAS M3.5, REMOVED	06/21/99		.XXX	±.005			REF	M1005126.01	
	WASHER, ECR 69963			.XXXX	±.0005	MAT'L. SEE ABOVE		FMF	M1130199.00	
NO.	REVISION	BY & DATE	CHK	ANG	±1/2"	FINISH		PREV		
THIS DRAWING IN DESIGN AND DETAIL IS OUR PROPERTY AND MUST NOT BE USED EXCEPT IN CONNECTION WITH OUR WORK ALL RIGHTS OF DESIGN AND INVENTION ARE RESERVED THIS IS AN ELECTRONICALLY GENERATED DOCUMENT - DO NOT SCALE THIS PRINT			RFP		CAD FILE M100514801		SIZE	DRAWING NO.		REV.
			DIST				A	M1005148.01		03

3/18/2011 11:36:58 AM

Dealers Industrial Equipment -- Visit <https://DealersElectric.com> or call (908) 688-1966 for all of your electric motor & VFD needs!