

PRODUCT INFORMATION PACKET



Model No: CIM34D18FD6D

Catalog No: M1130207.00

...18KW-1/4HP..1800RPM.63D.IP54.24V...S1.40C.1.0SF.B5.CIM34D18FD6D.....

Metric Motors



Regal and Leeson are trademarks of Regal Beloit Corporation or one of its affiliated companies.

©2018 Regal Beloit Corporation, All Rights Reserved. MC017097E





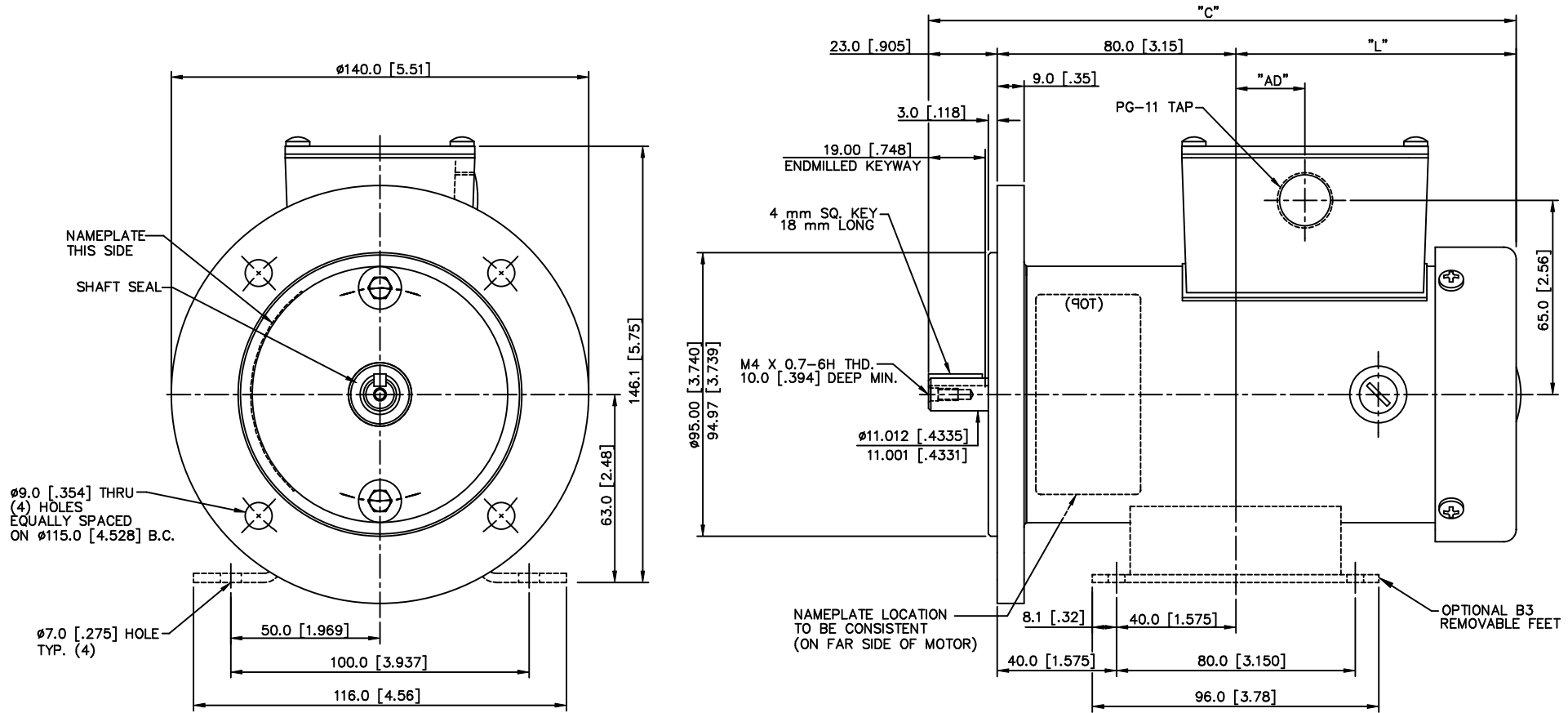
Nameplate Specifications

Output KW	0.18 kW	Voltage	24 V
Current	10.0 A	Speed	1800 rpm
Service Factor	1	Efficiency	76.5 %
Duty	S1	Insulation Class	F
Frame	63D	Enclosure	IP54
Overload Protector	No	Ambient Temperature	40 °C
Drive End Bearing Size	6201-13	Opp Drive End Bearing Size	6201-13
UL	Recognized	CSA	Y
CE	N		

Technical Specifications

Rotation	Reversible	Mounting	B5
Overall Length	8.75 in	Frame Length	6.43 in
Shaft Diameter	0.437 in	Shaft Extension	0.905 in
Outline Drawing	M1030347-M1130207	Connection Diagram	M100514801

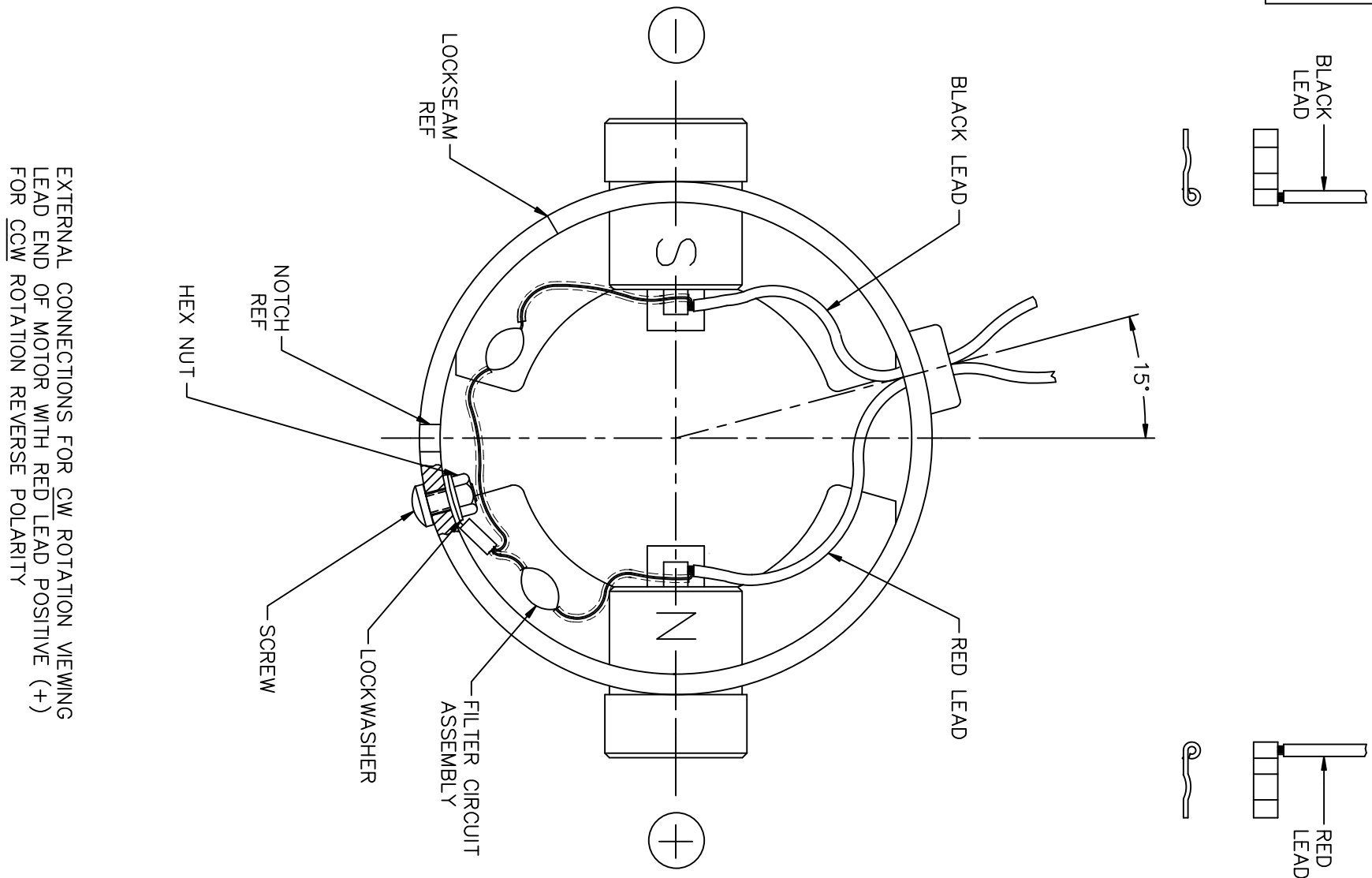
This is an uncontrolled document once printed or downloaded and is subject to change without notice. Date Created: 10/15/2018




M1130207.00	222.3 [8.75]	119.4 [4.70]	48.5 [1.91]	1800	24
M1130206.00	196.9 [7.75]	94.0 [3.70]	23.1 [.91]	3000	24
M1130199.00	222.3 [8.75]	119.4 [4.70]	48.5 [1.91]	1800	12
M1130198.00	196.9 [7.75]	94.0 [3.70]	23.1 [.91]	1800	12
CAT. NO.	C	L	AD	RPM	VOLTS

				TOLERANCES UNLESS OTHERWISE SPECIFIED		LEESON ELECTRIC CORPORATION					
				DECIMALS		DRAWN DWF 8/22/93 TITLE					
				.00 ± .01		CH'K'D. OUTLINE					
02 REVISED WITH NEW FAN & FAN GUARD SPV 3/20/97				.000 ± .005		IEC D63-B5 FLANGE					
01 ADDED CAT. NO. M1130207.00, M130206.00 DWF 2/15/94				.0000 ± .0005		34 FRAME					
NO. REVISION BY DATE				FRACTIONS ± 1/64		SCALE 3=4					
THIS DRAWING IN DESIGN AND DETAIL IS OUR PROPERTY AND MUST NOT BE USED EXCEPT IN CONNECTION WITH OUR WORK ALL RIGHTS OF DESIGN AND INVENTION ARE RESERVED				ANGLES ± 1/2°		REF. M1030283		FINISH CHRIS		SIZE B	
				INCH/MM		FMF M1130198.00		MOTOR		DRAWING NO. M1030347-00	

DC MOTORS



EXTERNAL CONNECTIONS FOR CW ROTATION VIEWING
LEAD END OF MOTOR WITH RED LEAD POSITIVE (+)
FOR CCW ROTATION REVERSE POLARITY

			TOLERANCES UNLESS SPECIFIED		 ELECTRIC MOTORS GEARMOTORS AND DRIVES	DRAWN DWF 08/21/93 CHK APPD
NO.	REVISION	BY & DATE	CHK	ANG		FINISH
03	ADDED INSULATION TO FILTER ASSEMBLY LEADS, ISAAC 11-0805	IPG 3/18/2011	DEC.	.X	±.1	
02	CORRECTED "N" & "S", ECR 83508	SMB 12/18/03	IPG	.XX	±.01	SCALE 1=1
01	6-32 NUT WAS M3.5 & 6-32 SCREW WAS M3.5, REMOVED WASHER, ECR 69963	06/21/99		.XXX	±.005	REF M1005126.01
				.XXXX	±.0005	FMF M1130199.00
				±1/2'		PREV
THIS DRAWING IN DESIGN AND DETAIL IS OUR PROPERTY AND MUST NOT BE USED EXCEPT IN CONNECTION WITH OUR WORK ALL RIGHTS OF DESIGN AND INVENTION ARE RESERVED THIS IS AN ELECTRONICALLY GENERATED DOCUMENT - DO NOT SCALE THIS PRINT			RFP	CAD FILE M100514801		SIZE A
			DIST			DRAWING NO. M1005148.01
						REV. 03