

# PRODUCT INFORMATION PACKET



Model No: CIM34D30FD2D

Catalog No: M1130206.00

...18KW-1/4HP..3000RPM.63D.IP54.24V...S1.40C.1.0SF.B5.CIM34D30FD2D.....

Metric Motors



Regal and Leeson are trademarks of Regal Beloit Corporation or one of its affiliated companies.

©2018 Regal Beloit Corporation, All Rights Reserved. MC017097E





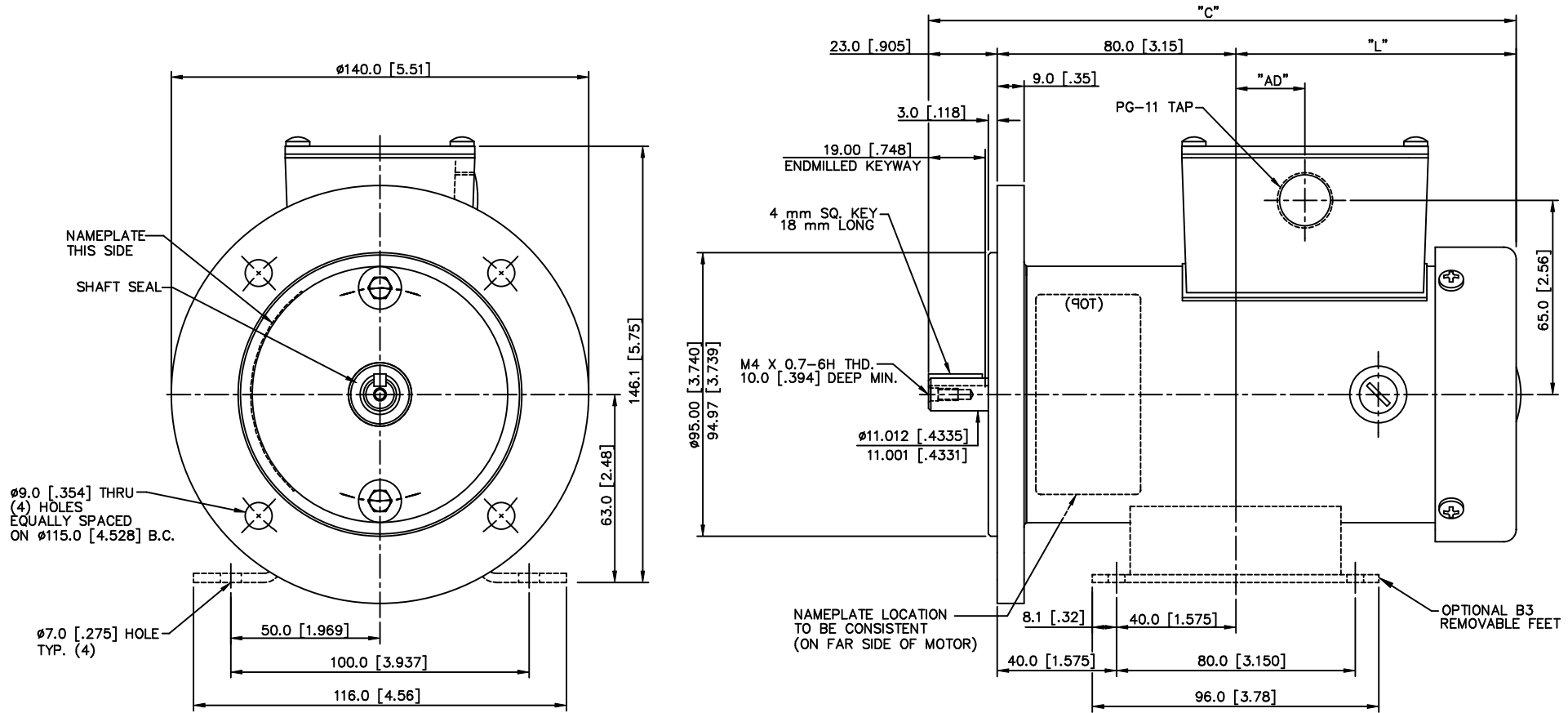
### Nameplate Specifications

Output KW	<b>0.18 kW</b>	Voltage	<b>24 V</b>
Current	<b>11.0 A</b>	Speed	<b>3000 rpm</b>
Service Factor	<b>1</b>	Efficiency	<b>74.2 %</b>
Duty	<b>S1</b>	Insulation Class	<b>F</b>
Frame	<b>63D</b>	Enclosure	<b>IP54</b>
Overload Protector	<b>No</b>	Ambient Temperature	<b>40 °C</b>
Drive End Bearing Size	<b>6201-13</b>	Opp Drive End Bearing Size	<b>6201-13</b>
UL	<b>Recognized</b>	CSA	<b>Y</b>
CE	<b>N</b>		

### Technical Specifications

Rotation	<b>Reversible</b>	Mounting	<b>B5</b>
Overall Length	<b>7.75 in</b>	Frame Length	<b>5.43 in</b>
Shaft Diameter	<b>0.437 in</b>	Shaft Extension	<b>0.905 in</b>
Outline Drawing	<b>M1030347-M1130206</b>	Connection Diagram	<b>M100514801</b>

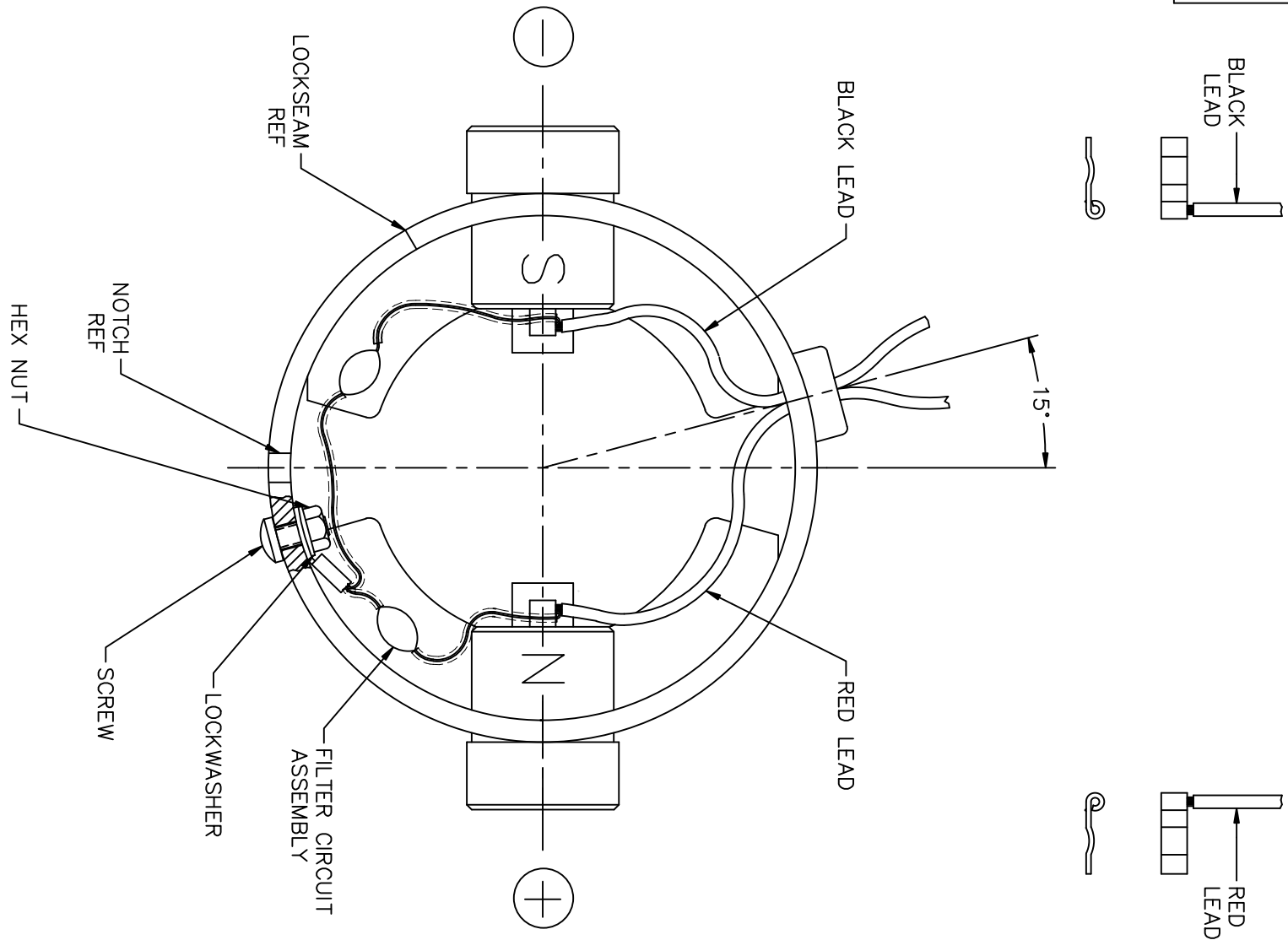
This is an uncontrolled document once printed or downloaded and is subject to change without notice. Date Created: 10/15/2018




M1130207.00	222.3 [8.75]	119.4 [4.70]	48.5 [1.91]	1800	24
M1130206.00	196.9 [7.75]	94.0 [3.70]	23.1 [.91]	3000	24
M1130199.00	222.3 [8.75]	119.4 [4.70]	48.5 [1.91]	1800	12
M1130198.00	196.9 [7.75]	94.0 [3.70]	23.1 [.91]	1800	12
CAT. NO.	C	L	AD	RPM	VOLTS

				TOLERANCES UNLESS OTHERWISE SPECIFIED		<b>LEESON ELECTRIC CORPORATION</b>					
				DECIMALS		DRAWN DWF 8/22/93 TITLE					
				.00 ± .01		CH'K'D. OUTLINE					
02 REVISED WITH NEW FAN & FAN GUARD SPV 3/20/97				.000 ± .005		IEC D63-B5 FLANGE					
01 ADDED CAT. NO. M1130207.00, M130206.00 DWF 2/15/94				.0000 ± .0005		34 FRAME					
NO. REVISION BY DATE				FRACTIONS ± 1/64		SCALE 3=4					
THIS DRAWING IN DESIGN AND DETAIL IS OUR PROPERTY AND MUST NOT BE USED EXCEPT IN CONNECTION WITH OUR WORK ALL RIGHTS OF DESIGN AND INVENTION ARE RESERVED				ANGLES ± 1/2'		REF. M1030283		FINISH CHRIS		SIZE B	DRAWING NO. M1030347-00
				INCH/MM		FMF M1130198.00		MOTOR			

DC MOTORS



EXTERNAL CONNECTIONS FOR CW ROTATION VIEWING  
LEAD END OF MOTOR WITH RED LEAD POSITIVE (+)  
FOR CCW ROTATION REVERSE POLARITY

			TOLERANCES UNLESS SPECIFIED		 ELECTRIC MOTORS GEARMOTORS AND DRIVES	DRAWN DWF 08/21/93 CHK APPD
NO.	REVISION	BY & DATE	CHK	ANG		FINISH
03	ADDED INSULATION TO FILTER ASSEMBLY LEADS, ISAAC 11-0805	IPG 3/18/2011	DEC.	INCHES		
			.X	±.1	TITLE	SCALE 1=1
02	CORRECTED "N" & "S", ECR 83508	SMB 12/18/03	IPG	.XX	CONNECTION DIAGRAM WITH FILTER CIRCUIT	REF M1005126.01
01	6-32 NUT WAS M3.5 & 6-32 SCREW WAS M3.5, REMOVED WASHER, ECR 69963	06/21/99		.XXX	MAT'L. SEE ABOVE	FMF M1130199.00
				.XXXX		
				±1/2'		
THIS DRAWING IN DESIGN AND DETAIL IS OUR PROPERTY AND MUST NOT BE USED EXCEPT IN CONNECTION WITH OUR WORK ALL RIGHTS OF DESIGN AND INVENTION ARE RESERVED THIS IS AN ELECTRONICALLY GENERATED DOCUMENT - DO NOT SCALE THIS PRINT			RFP	CAD FILE	M100514801	SIZE A
			DIST			DRAWING NO. M1005148.01
						REV. 03