

PRODUCT INFORMATION PACKET



Model No: 985.657D

Catalog No: M1125217.00

P300.IN-LINE..336:1.5RPM.353LBIN.1/20HP.30..TRIPLE..12V.DC.TENV.985.657D

P300 Series



Regal and Leeson are trademarks of Regal Beloit Corporation or one of its affiliated companies.

©2018 Regal Beloit Corporation, All Rights Reserved. MC017097E





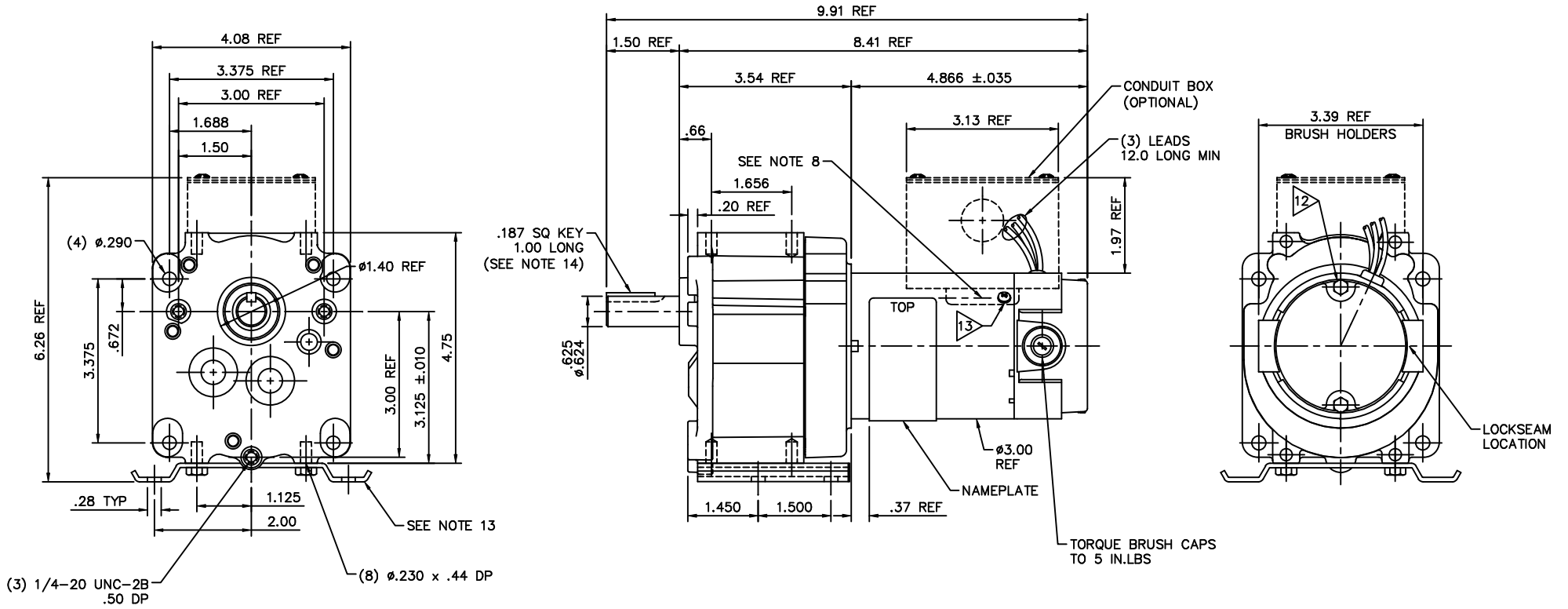
Nameplate Specifications

Output HP	0.05 Hp	Output KW	0.04 kW
Voltage	12 V	Current	5.6 A
Speed	5 rpm	Service Factor	1
Efficiency	41.2 %	Duty	Continuous
Insulation Class	F	Frame	30
Enclosure	Totally Enclosed Non Ventilated	Overload Protector	No
Ambient Temperature	40 °C	Drive End Bearing Size	6000
Opp Drive End Bearing Size	6000	UL	Recognized
CSA	Y	CE	N

Technical Specifications

Rotation	Reversible	Mounting	Special
Shaft Type	Parallel	Overall Length	9.91 in
Frame Length	2.99 in	Shaft Diameter	0.625 in
Shaft Extension	1.5 in		
Outline Drawing	M112521700OL	Connection Diagram	M112521700FI

This is an uncontrolled document once printed or downloaded and is subject to change without notice. Date Created: 10/15/2018



- NOTES:
1. ROTATION: REVERSIBLE
 2. HIPOT: PER CHART FOR ONE SECOND; RED & BLACK LEADS TO CASE
 3. LEADS: 14 Ga.
 4. BEARINGS: BALL BEARINGS BOTH ENDS
 5. CASTINGS: GEARBOX-DIE CAST ALUMINUM, REAR ENDCAP-DIE CAST ZINC
 6. MAGNET TUBE: ZINC PLATED STEEL
 7. INSULATION: CLASS F 155°C
 8. NAME PLATE MUST BE IN LINE WITH HOLE WITHIN .06"
 9. TEST AND LUBRICATE GEARBOX PER 890.178
 10. PAINT PER DRAWING # PP985.6XX
 11. PACKAGE FOR SHIPMENT PER 890.179
 12. TORQUE THRUBOLTS TO 20-25 IN-LB
 13. INSTALL BRACKET & CONDUIT BOX SCREWS AT FINAL ASSEMBLY BEFORE PAINTING

MODEL No.	VOLTAGE	CATALOG No.	TYPE	RATIO	TORQUE	HP	RPM
985.657	12VDC	M1125217.00	DN	336:1	353 IN.LB.	1/20	5

NO.	REVISION	BY & DATE	CHK	ANG	±1/2"	FINISH	LEESON		ELECTRIC MOTORS GEARMOTORS AND DRIVES		DRAWN	SMB 11/10/03	
08	REMOVED RUBBER BAND NOTE FOR KEY.	ECR83951	RPB	12/5/03	BC	TOLERANCES UNLESS SPECIFIED			TITLE 30 FRAME DC - P300 GEARBOX		CHK	SMB 11/10/03	
07	REDRAWN TO CURRENT STANDARDS PER ECR 81842		SMB	11/10/03	IPG	DEC.					INCHES	APPD	IPG 11/10/03
06	GREEN/YELLOW STRIPE GROUND LEAD WAS 18 GA.		SMB	11/10/03	IPG	.X					±.1	SCALE	1=2
05	REMOVED FLAT FROM OUTPUT SHAFT:		JKM	11/11/02		.XXX	±.005	REF		REF	M1125217.00		
	ADDED BRACKET AND CONDUIT BOX TO LEFT VIEW					.XXXX	±.0005	MAT'L		PREV			
THIS DRAWING IN DESIGN AND DETAIL IS OUR PROPERTY AND MUST NOT BE USED EXCEPT IN CONNECTION WITH OUR WORK ALL RIGHTS OF DESIGN AND INVENTION ARE RESERVED THIS IS AN ELECTRONICALLY GENERATED DOCUMENT - DO NOT SCALE THIS PRINT							RFP	CAD FILE	M1125217000L	SIZE	DRAWING NO.	REV.	
							DIST	B	M1125217.000L	08			

```
ERROR: syntaxerror  
OFFENDING COMMAND: --nostringval--
```

```
STACK:
```

```
-dictionary-  
-dictionary-  
/Pscript_WinNT_Compact  
-dictionary-
```

1. HIPOT @ 1250 VOLTS FOR ONE SECOND, RED & BLACK LEADS TO CASE
2. RED LEAD POS (+)
- BLACK LEAD NEG (-)
- } CCWSE (MOTOR ONLY-SHAFT OUTPUT END)
3. RUN IN @ 12 VDC, 1.63 MAX AMPS, NO LOAD
4. TORQUE THRUBOLTS TO 20-25 LB. IN.
5. ALL MOTORS TO BE RUN-IN AT FREE-LOAD FOR 30 MINS. [REVERSING DIRECTION AT 15 MINUTES] AT 12±1 VDC.


CHECKS TO OUTLINE DRAWING

- A. LEAD LENGTH & STRIP
- B. SHAFT ROTATION (GEARBOX)
- C. LABEL CORRECT, POSITION (CRITICAL) & DATE CODE
- D. -
- E. PAINT - SMOOTH. COMPLETE & NO RUNS
- F. MOUNTING BASE ON GEARBOX
- G. CONDUIT BOX SCREWS
- H. GEARBOX ID
- J. GEARBOX OIL PLUG TORQUE (24 LB. IN.)

PERFORMANCE SPECIFICATIONS

TORQUE	SPEED	MAX AMPS
100 LB. IN.	5-7	2.50
200 LB. IN.	4-6	3.20

UL NUMBER: 985.657

				TOLERANCES UNLESS SPECIFIED		 ELECTRIC MOTORS GEARMOTORS AND DRIVES	DRAWN AD 1/29/01		
				DEC.	INCHES		CHK		
03	REMOVED KEY & RUBBER BAND/"D"OUT.CHKS. ECR83964	RPB 12/17/03	BC	.X	±.1	TITLE FINAL INSPECTION 30 FRAME DC - P300 GEARBOX	APPD		
02	CHG'D NOTE5	JKM 11/8/02		.XX	±.01		SCALE 1=1		
01	1.63 W .76; 2.50 W 1.70; 3.20 W 2.60	AD 3/27/01		.XXX	±.005		REF		
00	RELEASE	AD 1/29/01		.XXXX	±.0005		FMF		
NO.	REVISION	BY & DATE	CHK	ANG	±1/2"	FINISH	PREV		
THIS DRAWING IN DESIGN AND DETAIL IS OUR PROPERTY AND MUST NOT BE USED EXCEPT IN CONNECTION WITH OUR WORK ALL RIGHTS OF DESIGN AND INVENTION ARE RESERVED THIS IS AN ELECTRONICALLY GENERATED DOCUMENT - DO NOT SCALE THIS PRINT				RFP	CAD FILE	M112521700FI	SIZE	DRAWING NO.	REV.
				DIST			A	M1125217.00FI	03